



# City of Grand Island

Tuesday, September 14, 2004

Council Session

## Item E7

**Public Hearing on Acquisition of Four (4) Utility Easements  
Located Along the North and South Side of East Hwy. 30, West of  
Shady Bend Road (Woodward Family Trust and Woodward  
Marital Trust)**

Staff Contact: Gary Mader

# **Council Agenda Memo**

**From:** Robert H. Smith, Asst. Utilities Director

**Meeting:** September 14, 2004

**Subject:** Acquisition of Utility Easements – North and South of East Hwy. 30, West of Shady Bend Road – Woodward Family Trust and Woodward Marital Trust

**Item #'s:** E-7 & G-17

**Presenter(s):** Gary R. Mader, Utilities Director

## **Background**

Nebraska State Law requires that acquisition of property must be approved by City Council. The Utilities Department needs to acquire four easements relative to the property of Margaret G. Woodward and Robert M. Wagner, Trustee of the Woodward Family Trust and Woodward Marital Trust, located along East Hwy. 30, in the area of Shady Bend Road, in the City Of Grand Island, Hall County, in order to have access to install, upgrade, maintain, and repair power appurtenances, including lines and transformers.

## **Discussion**

These easements will be used to relocate overhead power lines and the required anchors to back-up those lines. The expansion and widening of East Hwy. 30 has caused the need to relocate overhead power lines. In most cases, the relocated lines are in right-of-way acquired by Nebraska Dept. of Roads. As a line crosses a road, it must be backed up by anchors that are not in the right-of-way. These anchor easements must be acquired from adjacent property owners.

In the case of easement #1 and #2 an existing line was upgraded from single phase to three phase and is now used as a feeder. Documentation did not exist for the single phase line so it will be included in this acquisition.

The amount proposed to be paid for the easements is the same as that paid by Nebraska Department of Roads to the landowners for adjacent property. This was established by a court decision. The amount for each is:

	#1	\$1,760.00
	#2	\$ 720.00
	#3	\$ 73.46
	#4	<u>\$ 36.73</u>
TOTAL		\$2,590.19

## **Alternatives**

It appears that the Council has the following alternatives concerning the issue at hand. The Council may:

1. Approve the payment and acquisition of the easements.
2. Deny the acquisition of the easements.
3. Modify the request to meet the wishes of the Council.
4. Table the issue.

## **Recommendation**

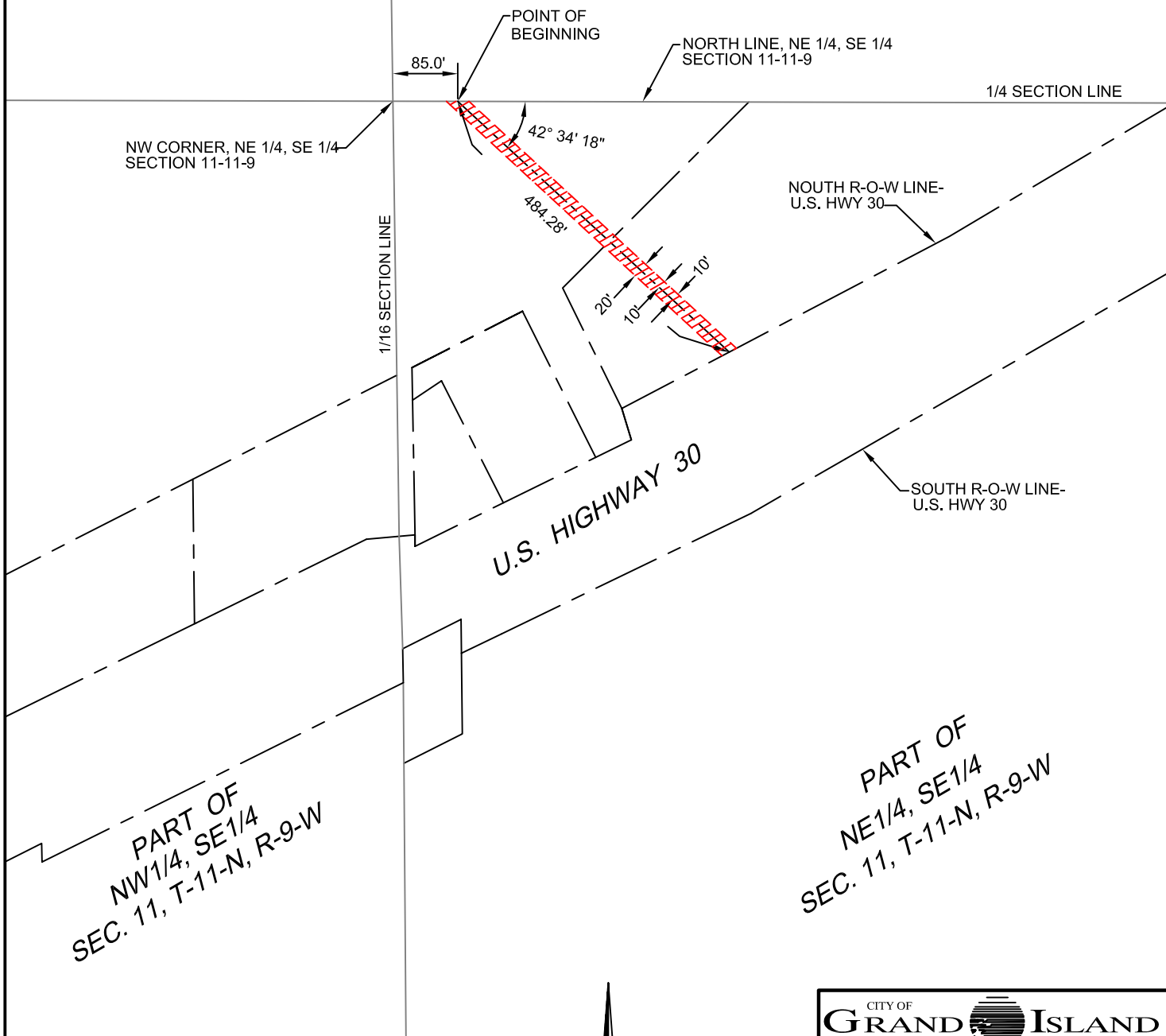
City Administration recommends that the Council approve the resolution for the acquisition of the easements for a total of \$2,590.19.

## **Sample Motion**

Approve the acquisition of the Utility Easements.

PART OF  
SW1/4, NE1/4  
SEC. 11, T-11-N, R-9-W

PART OF  
SE1/4, NE1/4  
SEC. 11, T-11-N, R-9-W



LEGEND



INDICATES 20' WIDE  
UTILITY EASEMENT



CITY OF  
**GRAND ISLAND**  
UTILITIES DEPARTMENT

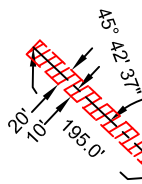
**EXHIBIT "A"**

DRN BY: K.J.M.	SCALE: 1"= 200'
DATE: 1/22/2004	FILE: SEC 11-11-9

PART OF  
SW1/4, NE1/4  
SEC. 11, T-11-N, R-9-W

PART OF  
SE1/4, NE1/4  
SEC. 11, T-11-N, R-9-W

EAST LINE, SW 1/4, NE 1/4  
SECTION 11-11-9



POINT OF  
BEGINNING

NORTH LINE, NE 1/4, SE 1/4  
SECTION 11-11-9

1/4 SECTION LINE

SE CORNER, SW 1/4, NE 1/4  
SECTION 11-11-9

1/16 SECTION LINE

NOUTH R-O-W LINE-  
U.S. HWY 30

U.S. HIGHWAY 30

SOUTH R-O-W LINE-  
U.S. HWY 30

PART OF  
NW1/4, SE1/4  
SEC. 11, T-11-N, R-9-W

PART OF  
NE1/4, SE1/4  
SEC. 11, T-11-N, R-9-W

### LEGEND



INDICATES 20' WIDE  
UTILITY EASEMENT



CITY OF <b>GRAND ISLAND</b>	
UTILITIES DEPARTMENT	
<b>EXHIBIT "A"</b>	
DRN BY: K.J.M.	SCALE: 1"= 200'
DATE: 1/22/2004	FILE: SEC 11-11-9

PART OF  
SE1/4, NE1/4  
SEC. 11, T-11-N, R-9-W

1/4 SECTION LINE

NE CORNER- NE 1/4,  
SE 1/4, SEC. 11-11-9

31.0'  
82.12'  
10.69'  
45.2'  
38.11'  
11.74'  
33'  
33'

U.S. HIGHWAY 30

827.98'  
686.0'

SOUTH R-O-W LINE-  
U.S. HWY 30

EAST LINE- NE 1/4,  
SE 1/4, SEC. 11-11-9

POINT OF  
BEGINNING  
TRACT #1

363.07'

POINT OF  
BEGINNING  
TRACT #2

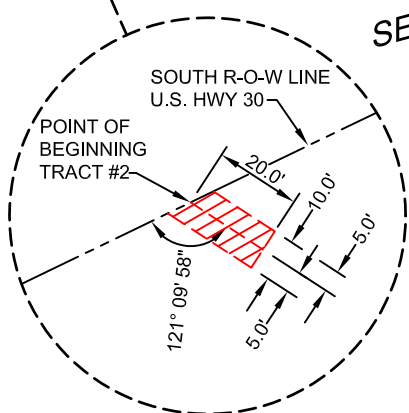
SHADY BEND ROAD

PART OF  
NE1/4, SE1/4  
SEC. 11, T-11-N, R-9-W

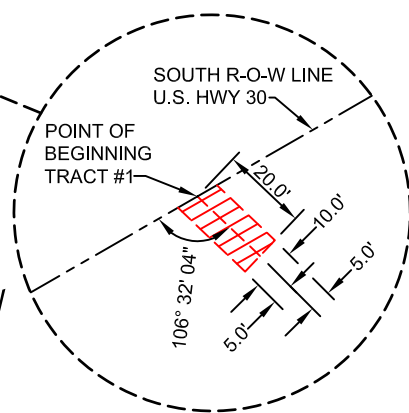
SOUTH R-O-W LINE  
U.S. HWY 30

POINT OF  
BEGINNING  
TRACT #1

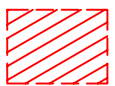
TRACT #1  
DETAIL



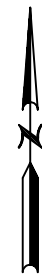
TRACT #2  
DETAIL



LEGEND



INDICATES 10' WIDE  
UTILITY EASEMENT



CITY OF  
**GRAND ISLAND**  
UTILITIES DEPARTMENT

**EXHIBIT "A"**

DRN BY: K.J.M.	SCALE: 1"= 200'
DATE: 11/25/2003	FILE: SX-11-11-9

PART OF  
SW 1/4, NW 1/4  
SEC. 12, T-11-N, R-9-W

U.S. HIGHWAY 30

ROAD

SECTION LINE

SW CORNER- SW 1/4,  
NW 1/4, SEC. 12-11-9

POINT OF  
BEGINNING

1/4 SECTION LINE

33'

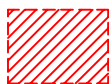
33'

SHADY BEND

PART OF  
NW 1/4, SW 1/4  
SEC. 12, T-11-N, R-9-W

U.S. HWY 30 R-O-W

LEGEND



INDICATES 10' WIDE  
UTILITY EASEMENT



CITY OF  
**GRAND ISLAND**  
UTILITIES DEPARTMENT

**EXHIBIT "A"**

DRN BY: K.J.M.

SCALE: 1"= 60'

DATE: 11/26/2003

FILE: SX 12.11.9