



# City of Grand Island

Tuesday, June 08, 2004

Council Session

## Item G8

**Approving Preliminary Plat for Martin's Second Subdivision**

Staff Contact: Chad Nabity

# Council Agenda Memo

**From:** Regional Planning Commission  
**Meeting:** June 8, 2004  
**Subject:** Martin's Second Subdivision - Preliminary Plat  
**Item #'s:** G-8  
**Presenter(s):** Chad Nabity

## Background

This preliminary plat proposes to create 7 lots on a parcel of land in the SE ¼ SE ¼ Section 13, Township 11, Range 10. North of Old Potash Highway, and West of Webb Road.

## Discussion

This property is zoned B2-General Business zone.

## Alternatives

It appears that the Council has the following alternatives concerning the issue at hand. The Council may:

1. Approve the preliminary plat as presented
2. Modify the preliminary plat to meet the wishes of the Council
3. Table the issue

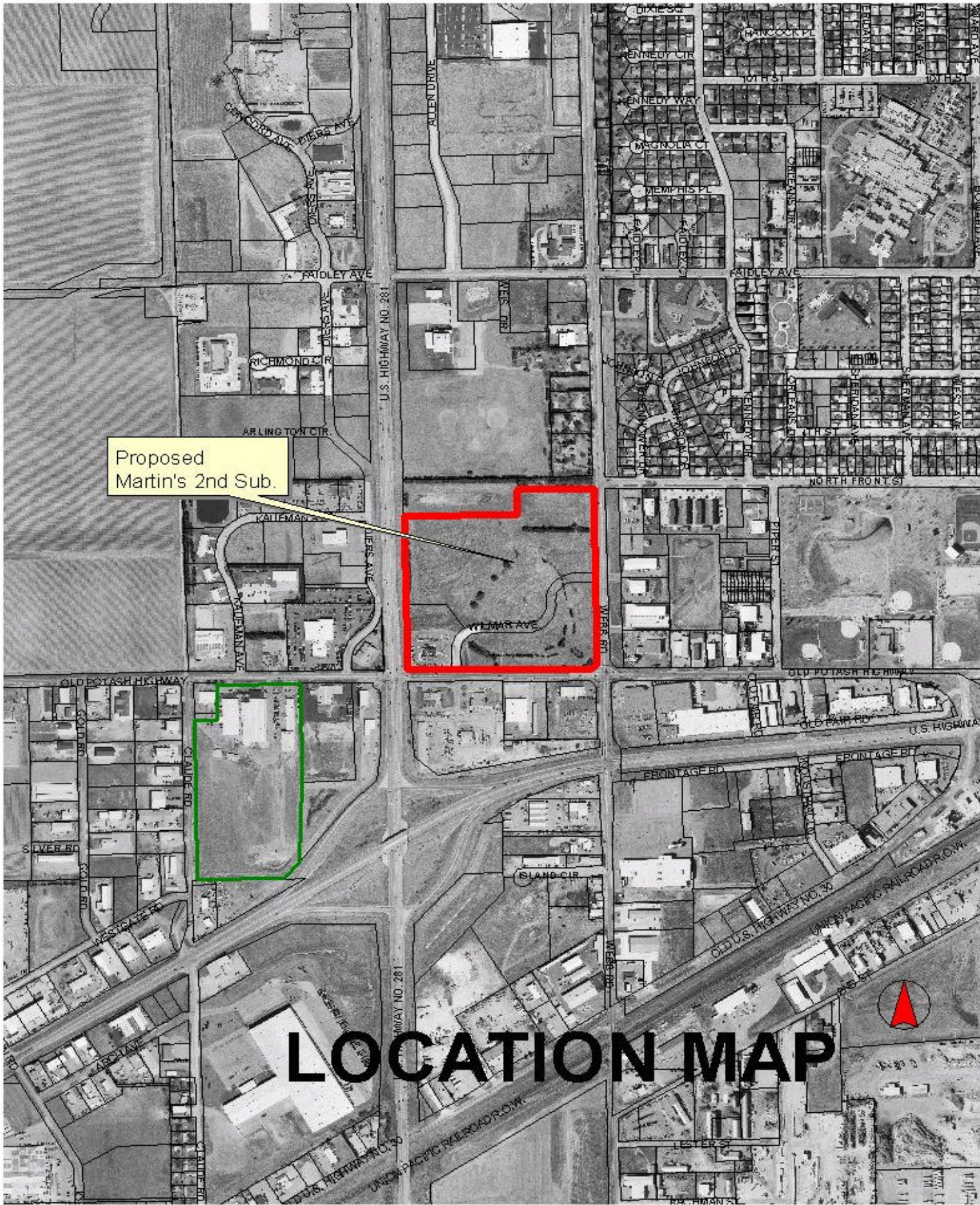
## Recommendation

A motion was made by Brown and seconded by Hayes to **approve** and recommend that the Grand Island City Council **approve** the preliminary plat of Martin's Second Subdivision.

A roll call vote was taken and the motion passed with 10 members present (Amick, Haskins, O'Neill, Brown, Niemann, Miller, Ruge, Monter, Hayes, Wagoner) voting in favor.

## Sample Motion

Approve the Preliminary Plat for Martin's Second Subdivision as presented.



Proposed  
Martin's 2nd Sub.

# LOCATION MAP