



City of Grand Island

Tuesday, May 25, 2004

Council Session

Item F3

**#8906 - Consideration of Creation of Street Improvement District
1252 for Lillie Drive from North Road to Mabel Drive, and Mabel
Drive from Lillie Drive North to Edna Drive**

Staff Contact: Steven P. Riehle, P.E., Public Works Director

Council Agenda Memo

From: Steven P. Riehle, P.E., Director of Public Works

Meeting: May 25, 2004

Subject: Consideration of Creation of Street Improvement District No. 1252; Lillie Drive from North Road to Mabel Drive and Mabel Drive North to Edna Drive

Item #'s: F-3

Presenter(s): Steven P. Riehle, Director of Public Works

Background

Council action is needed to create a Street Improvement District. A petition was received from 8 residents on November 3, 2003, requesting the creation of a Street Improvement District on Lillie Drive and Mabel Drive. However, City staff recommended that a sanitary sewer district be created and passed before creating a paving district. On March 23, 2004 the City Council created Sanitary Sewer District 513, along Lillie Drive. The district passed and was approved for continuation at the May 11, 2004 council meeting. As a result of the creation and continuation of Sanitary Sewer District 513, City staff will proceed with the request to create a paving district along Lillie Drive and Mabel Drive. If the District is created, a notice will be mailed to all affected property owners and a 20-day protest period will begin. The City will bid, construct, and levy special assessments for the work if the district passes the protest period. Special assessments would be levied to each property in the district.

Discussion

Lillie Drive and Mabel Drive, both located west of North Road and south of Old Potash Highway, are currently gravel roads. The residents have petitioned for the construction of an asphalt roadway in lieu of a concrete curb and gutter street. This would be similar to the construction requested by the residents along Edna Drive which is located in the immediate area. The district for Edna Drive, Street Improvement District 1250, was approved by Council on October 28, 2003, and the continuation of the district was approved on December 9, 2003.

A Resolution, approved by Council on April 20, 1992, allows gravel roads to be hard paved without curb and gutter if the segment of the road is surrounded by unpaved roads or by paved roads without curb, gutter, or storm sewer. Because North Road is an asphalt roadway without curb and gutter and the other streets in the area are gravel, Lillie Drive and Mabel Drive meet the conditions of this Resolution. The asphalt roadway in this district would be 24 feet wide.

Alternatives

It appears that the Council has the following alternatives concerning the issue at hand. The Council may:

1. Approve the creation of Street Improvement District 1252.
2. Disapprove or/Deny the creation of the district.
3. Modify the request to meet the wishes of the Council.
4. Table the issue.

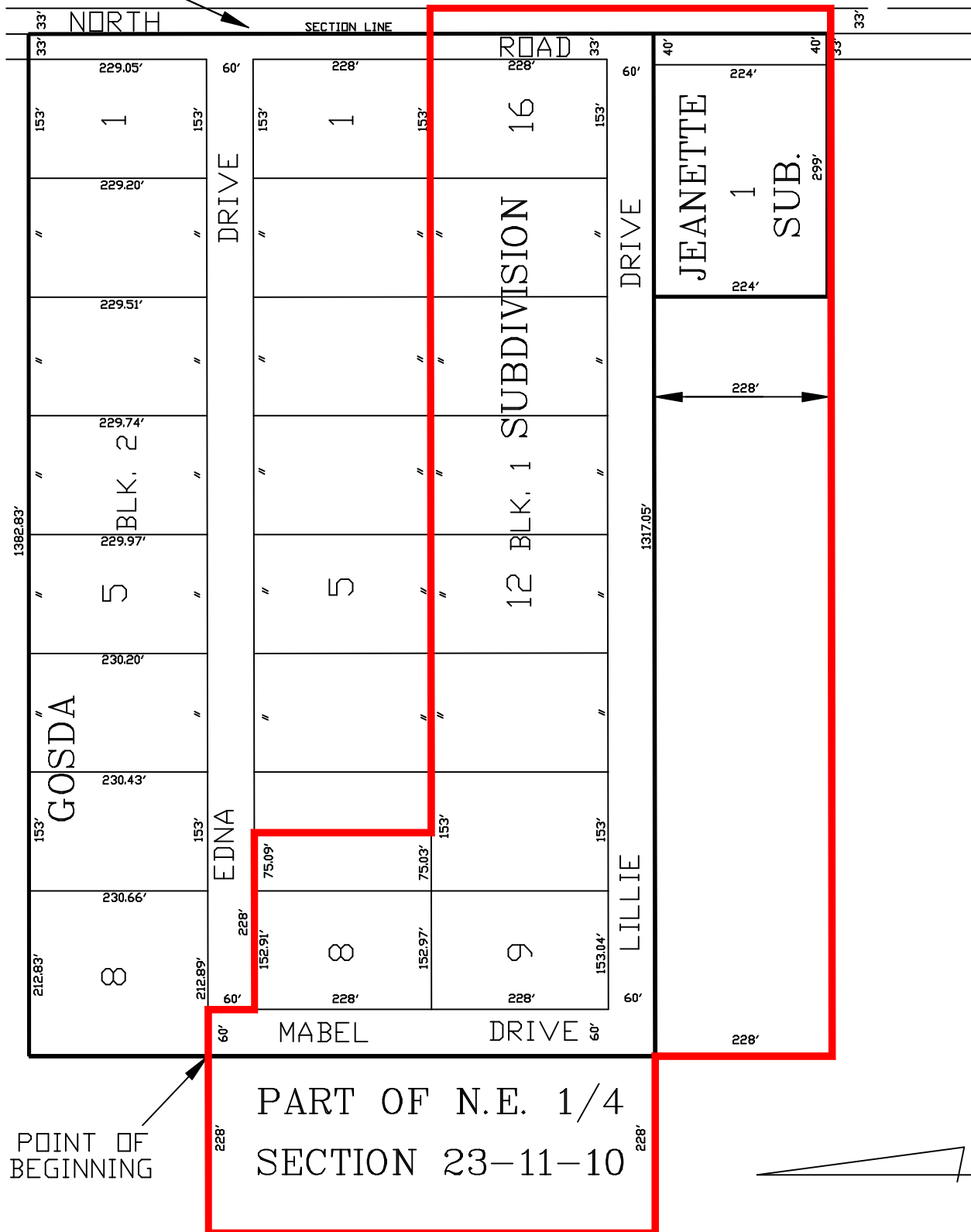
Recommendation

City Administration recommends that the Council approve the creation of Street Improvement District 1252 along Lillie Drive and Mabel Drive.

Sample Motion

Move to approve the creation of Street Improvement District 1252.

PART OF S.W.1/4, N.W.1/4
SECTION 24-11-10



• This Space Reserved for Register of Deeds •

ORDINANCE NO. 8906

An ordinance to create Street Improvement District No. 1252; to define the boundaries of the district; to provide for the improvement of a street within the district by paving, curbing, guttering, storm drainage, sidewalks, and other incidental work in connection therewith; to provide for the filing of this ordinance with the Hall County Register of Deeds; and to provide the publication and effective date of this ordinance.

BE IT ORDAINED BY THE MAYOR AND COUNCIL OF THE CITY OF
GRAND ISLAND, NEBRASKA:

SECTION 1. Street Improvement District No. 1252 in the City of Grand Island, Nebraska, is hereby created.

SECTION 2. The boundaries of the district shall be as follows:

Beginning at the southwest corner of Lot Eight (8), Block Two (2) Gosda Subdivision; thence east on the south line of Lot Eight (8), Block Two (2) Gosda Subdivision a distance of Sixty (60.0) feet; thence south on a prolongation of the east line of Mabel Drive to the south line of Edna Drive; thence east on the south line of Edna Drive for a distance of Two Hundred Twenty Eight (228.0) feet; thence south on a line Two Hundred Twenty Eight (228.0) feet east of and parallel to the east line of Mabel Drive to the north line of Lot Ten (10), Block One (1) Gosda Subdivision; thence east on the north line of Lots Ten (10), Eleven

ORDINANCE NO. 8906 (Cont.)

(11), Twelve (12), Thirteen (13), Fourteen (14), Fifteen (15), and Sixteen (16), Block One (1) Gosda Subdivision and a prolongation thereof to the east line of North Road; thence south on the east line of North Road to a point where a prolongation of a line Two Hundred Twenty Eight (228.0) feet south of Lillie Drive intersects; thence west on a line Two Hundred Twenty Eight (228.0) feet south and parallel to the south line of Lillie Drive to a point where a prolongation of the west line of Mabel Drive intersects; thence north on a prolongation of the west line of Mabel Drive for a distance of Two Hundred Twenty Eight (228.0) feet to the south line of Lillie Drive; thence west on a prolongation of the south line of Lillie Drive for a distance of Two Hundred Twenty Eight (228.0) feet; thence north on a line Two Hundred Twenty Eight (228.0) feet west of and parallel to the west line of Mabel Drive to a point where a prolongation of the north line of Edna Drive intersects; thence east on said prolongation for a distance of Two Hundred Twenty Eight (228.0) feet to the point of beginning, as shown on the plat dated May 13, 2004, marked Exhibit 'A', attached hereto and incorporated herein by reference.

SECTION 3. The following street in the district shall be improved by paving and other incidental work in connection therewith:

Mabel Drive between Edna Drive and Lillie Drive, and Lillie Drive from Mabel Drive to North Road, in the City of Grand Island, Hall County, Nebraska.

Said improvements shall be made in accordance with plans and specifications approved by the Engineer for the City of Grand Island.

SECTION 4. All improvements shall be made at public cost, but the cost thereof shall be assessed upon the lots and lands in the district specially benefited thereby as provided by law.

SECTION 5. This ordinance, with the plat, is hereby directed to be filed in the office of the Register of Deeds, Hall County, Nebraska.

SECTION 6. This ordinance shall be in force and take effect from and after its passage and publication, without the plat, as provided by law.

ORDINANCE NO. 8906 (Cont.)

SECTION 7. After passage, approval and publication of this ordinance, without the plat, notice of the creation of said district shall be published in the Grand Island Independent, a legal newspaper published and of general circulation in said City, as provided by law.

Enacted: May 25, 2004.

Jay Vavricek, Mayor

Attest:

RaNae Edwards, City Clerk