



# City of Grand Island

Tuesday, April 27, 2004

Council Session

## Item F3

**#8898 - Consideration of Creation of Sanitary Sewer No. 516,  
Stolley Park Road from Bellwood Drive to East of Kingswood  
Drive (Roush Subdivision)**

Staff Contact: Steven P. Riehle, P.E., Public Works Director

# **Council Agenda Memo**

**From:** Steven P. Riehle, P.E., Director of Public Works

**Meeting:** April 27, 2004

**Subject:** Consideration of Creation of Sanitary Sewer No. 516, Bellwood Drive to East of Kingswood Drive (Roush Subdivision)

**Item #'s:** F-3

**Presenter(s):** Steven P. Riehle, P.E., Director of Public Works

## **Background**

Council action is needed to create a sanitary sewer district. If created, a notice will be mailed to all affected property owners and a 30-day protest period allowed.

## **Discussion**

A petition was submitted by residents in the area requesting the creation of a sanitary sewer district. The homes in the area have experienced problems with their septic tanks.

## **Alternatives**

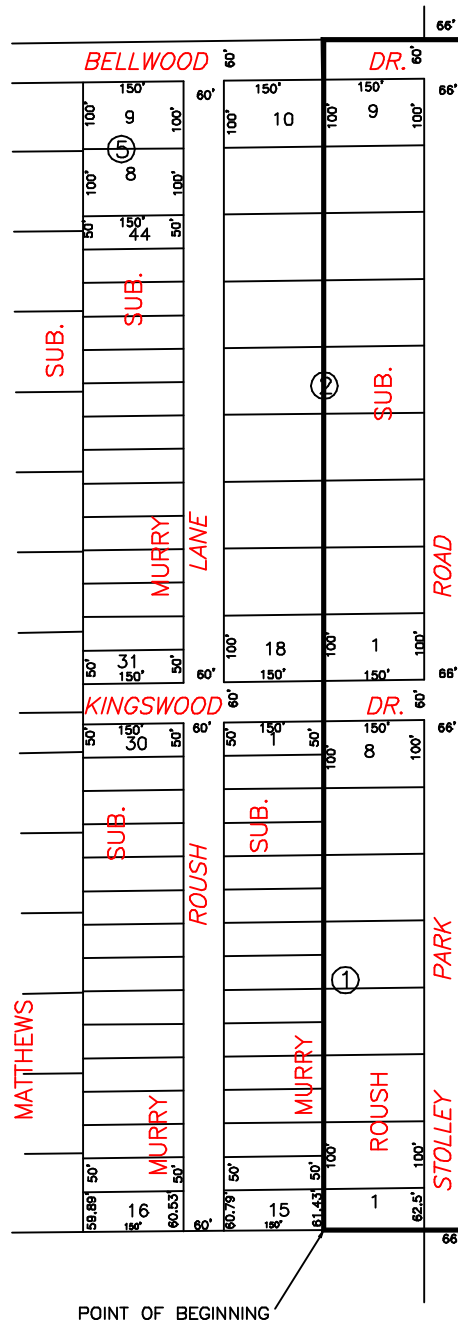
1. Approve the recommendation to create Sanitary Sewer District 516.
2. Disapprove or /Deny the creation of the District.
3. Modify the recommendation to meet the wishes of the Council.
4. Table the issue.

## **Recommendation**

City Administration recommends that the Council approve the creation of Sanitary Sewer District 516. A ten (10) year assessment period is recommended.

## **Sample Motion**

Move to approve the creation of Sanitary Sewer District # 516.



SANITARY SEWER DISTRICT 516

\* This Space Reserved for Register of Deeds \*

## ORDINANCE NO. 8898

An ordinance creating Sanitary Sewer District No. 516 of the City of Grand Island, Nebraska; defining the boundaries thereof; providing for the laying of sanitary sewer mains in said district; providing for plans and specifications and securing bids; providing for the assessment of special taxes for constructing such sewer and collection thereof; and providing for publication and the effective date of this ordinance.

BE IT ORDAINED BY THE MAYOR AND COUNCIL OF THE CITY OF GRAND ISLAND, NEBRASKA:

SECTION 1. Sanitary Sewer District No. 516 is hereby created for the construction of an eight (8) inch sanitary sewer main and appurtenances thereto in a part of Roush Subdivision in the City of Grand Island, Hall County, Nebraska.

SECTION 2. The boundaries of such sanitary sewer district shall be as follows:

Beginning at the southeast corner of Lot One (1), Block One (1), Roush Subdivision; thence west on the south line of Lots One (1), Two (2), Three (3), Four (4), Five (5), Six (6), Seven (7), and Eight (8), Block One (1) Roush Subdivision, Lots One (1), Two (2), Three (3), Four (4), Five (5), Six (6), Seven (7), Eight (8), and Nine (9), Block Two (2), Roush Subdivision and a prolongation thereof to the west line of Bellwood Drive; thence north on the west line of Bellwood Drive and a prolongation thereof to the north line of Stolley Park

ORDINANCE NO. 8898 (Cont.)

Road; thence east on the north line of Stolley Park Road to a point where a prolongation of the east line of Lot One (1), Block One (1) Roush Subdivision intersects; thence south on said east line and prolongation thereof to the point of beginning, all as shown on the plat dated April 19, 2004, attached hereto as Exhibit "A" and incorporated herein by reference.

SECTION 3. Said improvement shall be made in accordance with plans and specifications prepared by the Engineer for the City who shall estimate the cost thereof, and submit the same to the City Council, and thereafter, bids for the construction of such sanitary sewer shall be taken and contracts entered into in the manner provided by law.

SECTION 4. The cost of construction of such sanitary sewer district shall be assessed against the property within the district abutting upon the easement or other right-of-way within which such sanitary sewer main has been constructed, to the extent of benefits to such property by reason of such improvement, and a special tax shall be levied at one time to pay for such cost of construction as soon as can be ascertained as provided by law; and such special tax and assessments shall constitute a sinking fund for the payment of any warrants or bonds with interest, issued for the purpose of paying the cost of such sewer in such district; and such special assessments shall be paid and collected in a fund to be designated and known as the Sewer and Water Extension Fund and out of which all warrants issued for the purpose of paying the cost of sanitary sewer shall be paid.

SECTION 5. This ordinance shall be in force and take effect from and after its passage, approval and publication, without the plat, as provided by law.

SECTION 6. This ordinance, with the plat, is hereby directed to be filed in the office of the Register of Deeds of Hall County, Nebraska.

ORDINANCE NO. 8898 (Cont.)

SECTION 7. After passage, approval and publication of this ordinance, notice of the creation of said district shall be published in the Grand Island Independent, a legal newspaper published and of general circulation in said City, as provided by law.

Enacted: April 27, 2004.

---

Jay Vavricek, Mayor

Attest:

---

RaNae Edwards, City Clerk