



City of Grand Island

Tuesday, March 09, 2004

Council Session

Item E3

**Public Hearing on Acquisition of Utility Easement - 1/2 Mile East
of 2nd Road, 1/2 Mile North of E Road, Located in Merrick
County - Matton**

Staff Contact: Gary R. Mader

Council Agenda Memo

From: Robert H. Smith, Asst. Utilities Director

Meeting: March 9, 2004

Subject: Acquisition of Utility Easement – ½ Mile East of 2nd Road, ½ Mile North of “E” Road, Located in Merrick County - Mattoni

Item #'s: E-3, & G-9

Presenter(s): Gary R. Mader, Utilities Director

Background

Nebraska State Law requires that acquisition of property must be approved by City Council. The Utilities Department needs to acquire an easement relative to the property of Nicholas and Adrian Mattoni, located ½ mile east of 2nd Road, and ½ mile north of “E” Road, in Merrick County, Nebraska, in order to have access to install, upgrade, maintain, and repair power appurtenances, including lines and transformers.

Discussion

This easement will be used to construct a new three-phase overhead power line along the half section line. This line will serve five irrigation wells.

Alternatives

It appears that the Council has the following alternatives concerning the issue at hand. The Council may:

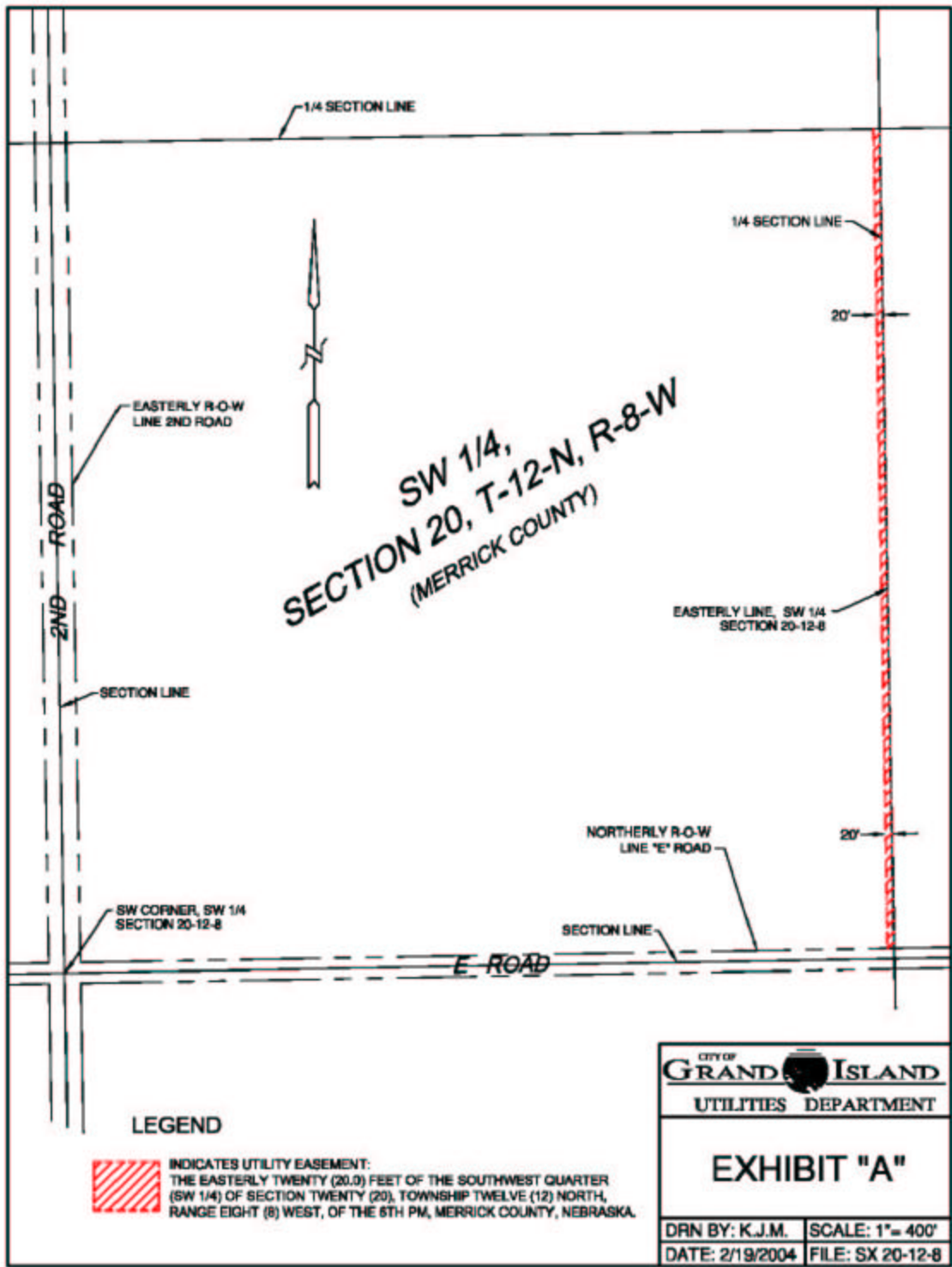
1. Approve the acquisition of the easement.
2. Disapprove or /Deny the easement.
3. Modify the request to meet the wishes of the Council
4. Table the issue

Recommendation

City Administration recommends that the Council approve the resolution for the acquisition of the easement for one dollar (\$1.00).

Sample Motion

Approve the acquisition of the Utility Easement ½ mile east of 2nd Road, and ½ mile north of “E” Road, located in Merrick County (Nicholas and Adrian Mattoni).



LEGEND



INDICATES UTILITY EASEMENT:
THE EASTERLY TWENTY (20.0) FEET OF THE SOUTHWEST QUARTER
(SW 1/4) OF SECTION TWENTY (20), TOWNSHIP TWELVE (12) NORTH,
RANGE EIGHT (8) WEST, OF THE 6TH PM, MERRICK COUNTY, NEBRASKA.

CITY OF GRAND ISLAND UTILITIES DEPARTMENT	
<h2>EXHIBIT "A"</h2>	
DRN BY: K.J.M.	SCALE: 1" = 400'
DATE: 2/19/2004	FILE: SX 20-12-8