



# City of Grand Island

Tuesday, November 18, 2003

Council Session

## Item G12

### **#2003-339 - Approving Final Plat and Subdivision Agreement for Equestrian Meadows Subdivision**

*Equestrian Meadows LLC, owners, have submitted the final plat for Equestrian Meadows Subdivision, located south of Stolley Park Road and east of South Locust Street. This plat proposes to develop 6 lots. This plat has been reviewed by the Planning, Public Works and Utilities Departments. The Regional Planning Commission, at their meeting of November 5, 2003, unanimously voted to recommend approval with an easement for parking added to the final plat.*

Staff Contact: Chad Nabity

November 6, 2003

Honorable Jay Vavricek, Mayor  
and Members of the Council  
City Hall  
Grand Island NE 68801

Dear Mayor and Members of the Council:

**RE: FINAL PLAT – Equestrian Meadows Subdivision, located South of Stolley Park Road, and East of Locust Street, Grand Island, Nebraska.**

At the regular meeting of the Regional Planning Commission, held November 5, 2003 the above item was considered. This final plat proposes to create 6 lots on a parcel of land in the NW ¼ of the NW ¼ of Section 27-11-9.

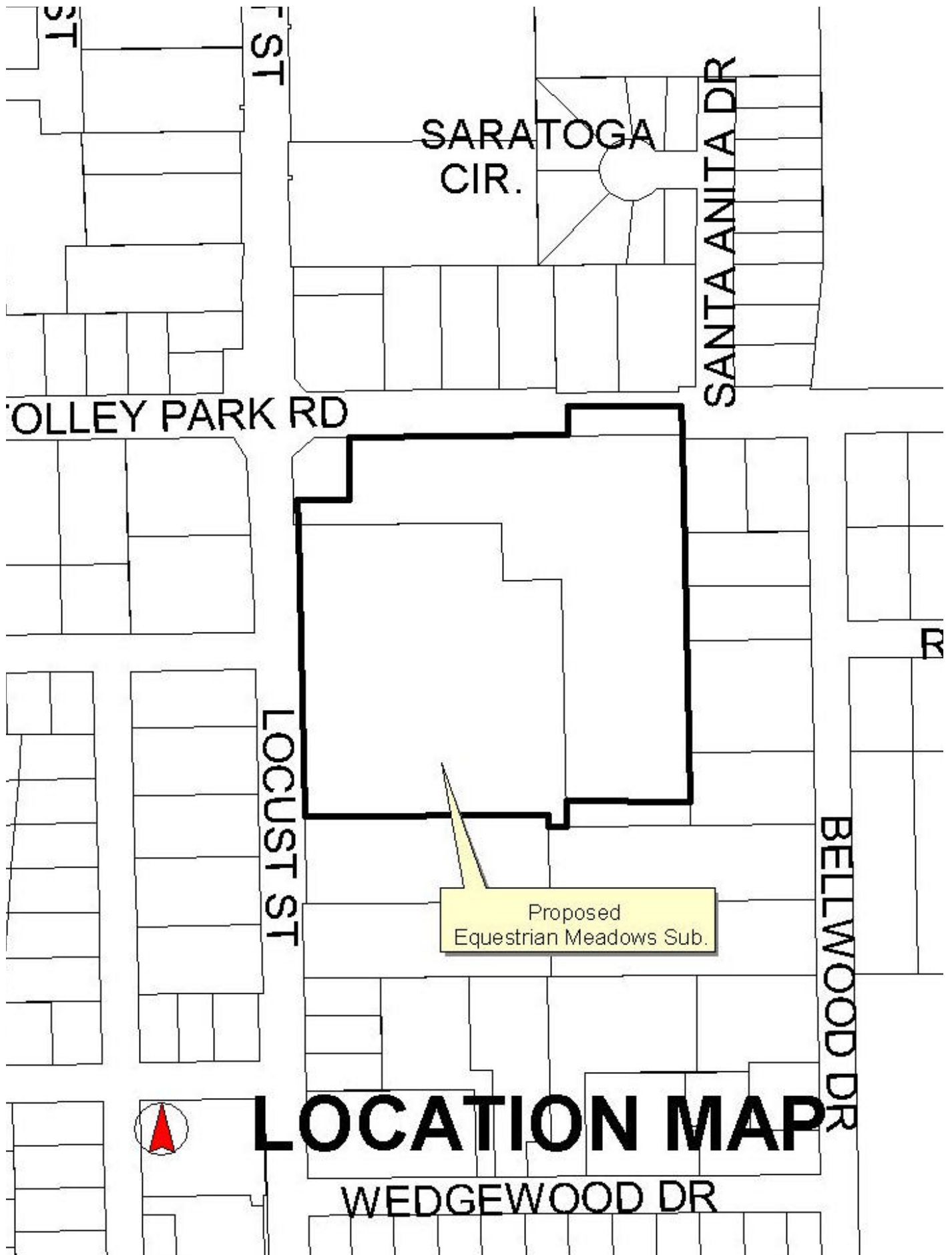
A motion was made by Ruge and seconded by Haskins to **approve** and recommend that the City Council **approve** the final plat of Equestrian Meadows Subdivision with an easement for parking added to the final plat.

A roll call vote was taken and the motion passed by a unanimous vote of the 11 members present (Amick, Haskins, Lechner, O'Neill, Brown, Niemann, Miller, Ruge, Hayes, Wagoner).

Yours truly,

Chad Nabity AICP  
Planning Director

cc: City Attorney  
Director of Utilities  
Director of Public Works  
Director of Building Inspections  
Manager of Postal Operations  
Rockwell & Associates



RESOLUTION 2003-339

WHEREAS, Equestrian Meadows, L.L.C., a Nebraska limited liability company, as owner, has caused to be laid out into lots, a tract of land comprising all of Lot Two (2), Burch Second Subdivision, and a part of the Northwest Quarter of the Northwest Quarter (NW1/4, NW1/4), all in Section Twenty Seven (27), Township Eleven (11) North, Range Nine (9) West of the 6<sup>th</sup> P.M., in the city of Grand Island, Hall County, Nebraska, under the name of EQUESTRIAN MEADOWS SUBDIVISION, and has caused a plat thereof to be acknowledged by it; and

WHEREAS, a copy of the plat of such subdivision has been presented to the Boards of Education of the various school districts in Grand Island, Hall County, Nebraska, as required by Section 19-923, R.R.S. 1943; and

WHEREAS, a form of subdivision agreement has been agreed to between the owner and the City of Grand Island.

NOW, THEREFORE, BE IT RESOLVED BY THE MAYOR AND COUNCIL OF THE CITY OF GRAND ISLAND, NEBRASKA, that the form of subdivision agreement hereinbefore described is hereby approved, and the Mayor is hereby authorized to execute such agreement on behalf of the City of Grand Island.

BE IT FURTHER RESOLVED that the final plat of EQUESTRIAN MEADOWS SUBDIVISION, as made out, acknowledged, and certified, is hereby approved by the City Council of the City of Grand Island, Nebraska, and the Mayor is hereby authorized to execute the approval and acceptance of such plat by the City of Grand Island, Nebraska.

- - -

Adopted by the City Council of the City of Grand Island, Nebraska, November 18, 2003.

---

RaNae Edwards, City Clerk