



City of Grand Island

Tuesday, October 28, 2003

Council Session

Item E2

Public Hearing on Annexation of Property Proposed for Platting as Smith Acres Subdivision, Located North of Capital Avenue and West of Saint Paul Road

Public Hearing concerning annexation of property being platted as Smith Acres Subdivision an addition to the City of Grand Island. The property is located in the E 1/2 W 1/4 SE 1/4 Section 4, Township 11, Range 9. The Regional Planning Commission at their meeting of October 1, 2003, unanimously voted to approve and recommend the city council approve this annexation. It is appropriate to solicit public comment. The action item is contained under Ordinances

Staff Contact: Chad Nabity

October 6, 2003

Honorable Ken Gnadt, Mayor
And Members of the Council
City Hall
Grand Island, NE 68801

Dear Mayor and Members of the Council:

RE: Annexation of Property Being Platted as Smith Acres Subdivision, located North of Capital Avenue and West of Saint Paul Road.

At the regular meeting of the Regional Planning Commission, held October 1, 2003, the above item was considered following a public hearing. The above item is to Annex the property that is being platted as Smith Acres, located in the E ½ W ¼ SE ¼ of Section 4, Township 11, Range 9.

This annexation will have no effect on the 2 mile extraterritorial jurisdiction exercised by the City Of Grand Island. City services are available to this property.

No members of the public spoke in opposition of this item.

No members of the public spoke in favor of this item.

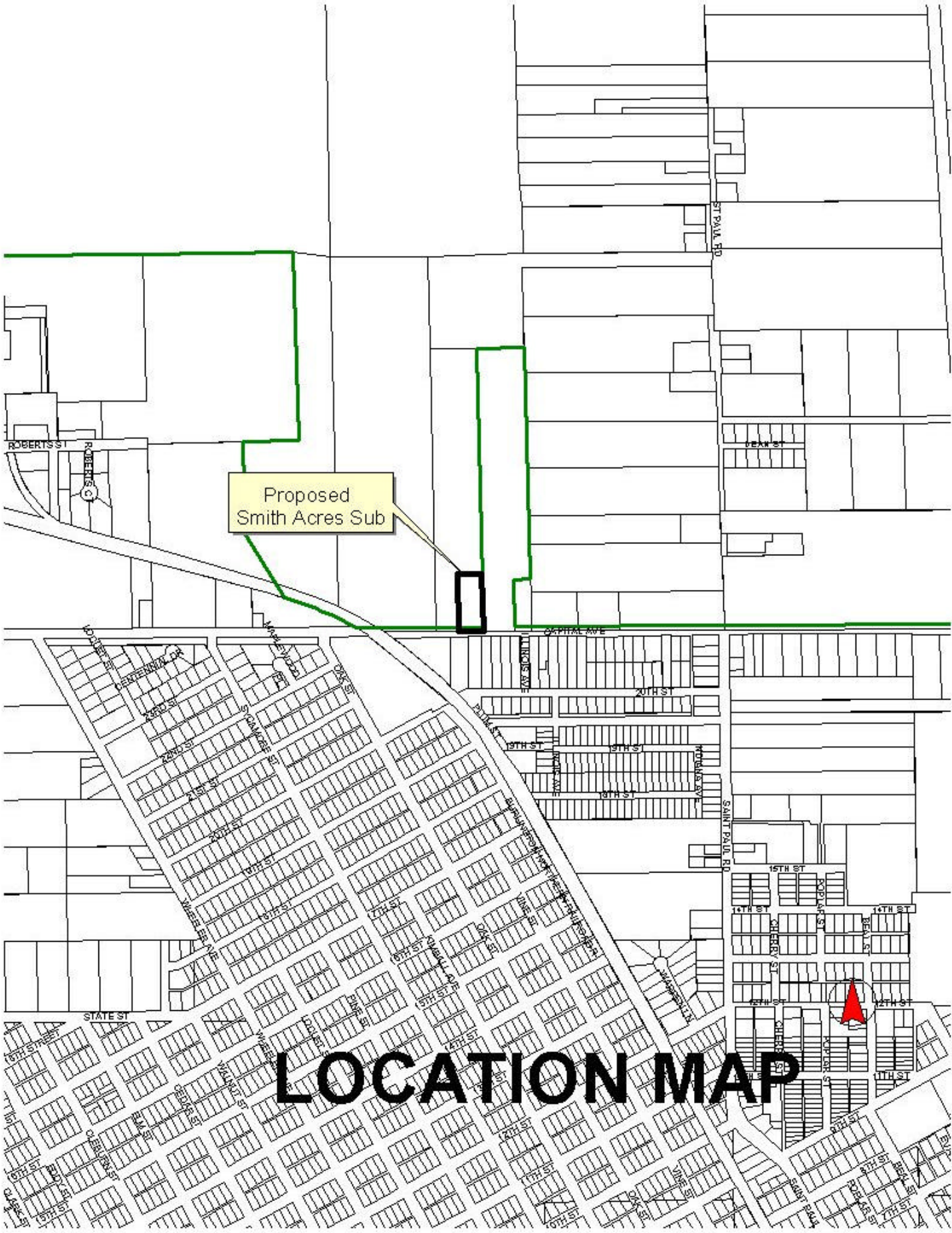
Following further discussion a motion was made by Haskins and 2nd by O'Neill to approve and recommend the City of Grand Island recommend this annexation.

A roll call vote was taken and the motion passed by a unanimous vote of the 10 members present (Amick, Haskins, Lechner, O'Neill, Hooker, Eriksen, Miller, Ruge, Hayes, Wagoner).

Yours truly,

Chad Nabity AICP
Planning Director

cc: Director of Building Inspections
City Attorney
Director of Utilities
Director of Public Works
Manager of Postal Operations
Benjamin & Associates
Applicant



Proposed
Smith Acres Sub

LOCATION MAP