



City of Grand Island

Tuesday, September 09, 2003

Council Session

Item G7

#2003-254 - Approving Final Plat and Subdivision Agreement for Firethorne Estates Second Subdivision

Marlene Roush, owner, has submitted the final plat for Firethorne Estates Second Subdivision, located North of Midaro Drive, and East of South Locust Street. This plat proposes to develop 2 lots on a currently unplatted parcel of land in the SW 1/4 Section 27, 11, 9. This plat will approve one 19+ acre lot and one 10+ acre lot. These lots will be served by individual well and septic systems as public sewer and water are not available. This plat has been reviewed by the Planning, Public Works and Utilities Departments. The Regional Planning Commission, at their meeting of September 3, 2003 voted to recommend approval with 9 members voting in favor and 1 member voting against. See attached RESOLUTION.

Staff Contact: Chad Nabity

September 4, 2003

Honorable Jay Vavricek, Mayor
and Members of the Council
City Hall
Grand Island NE 68801

Dear Mayor and Members of the Council:

RE: FINAL PLAT – Firethorne Estates Second Subdivision located North of Midaro Drive, and East of South Locust Street, Grand Island, Nebraska.

At the regular meeting of the Regional Planning Commission, held September 3, 2003 the above item was considered. This final plat proposes to 2 lots on a currently unplatted parcel of land in the NE ¼ SW ¼ 27-11-9.

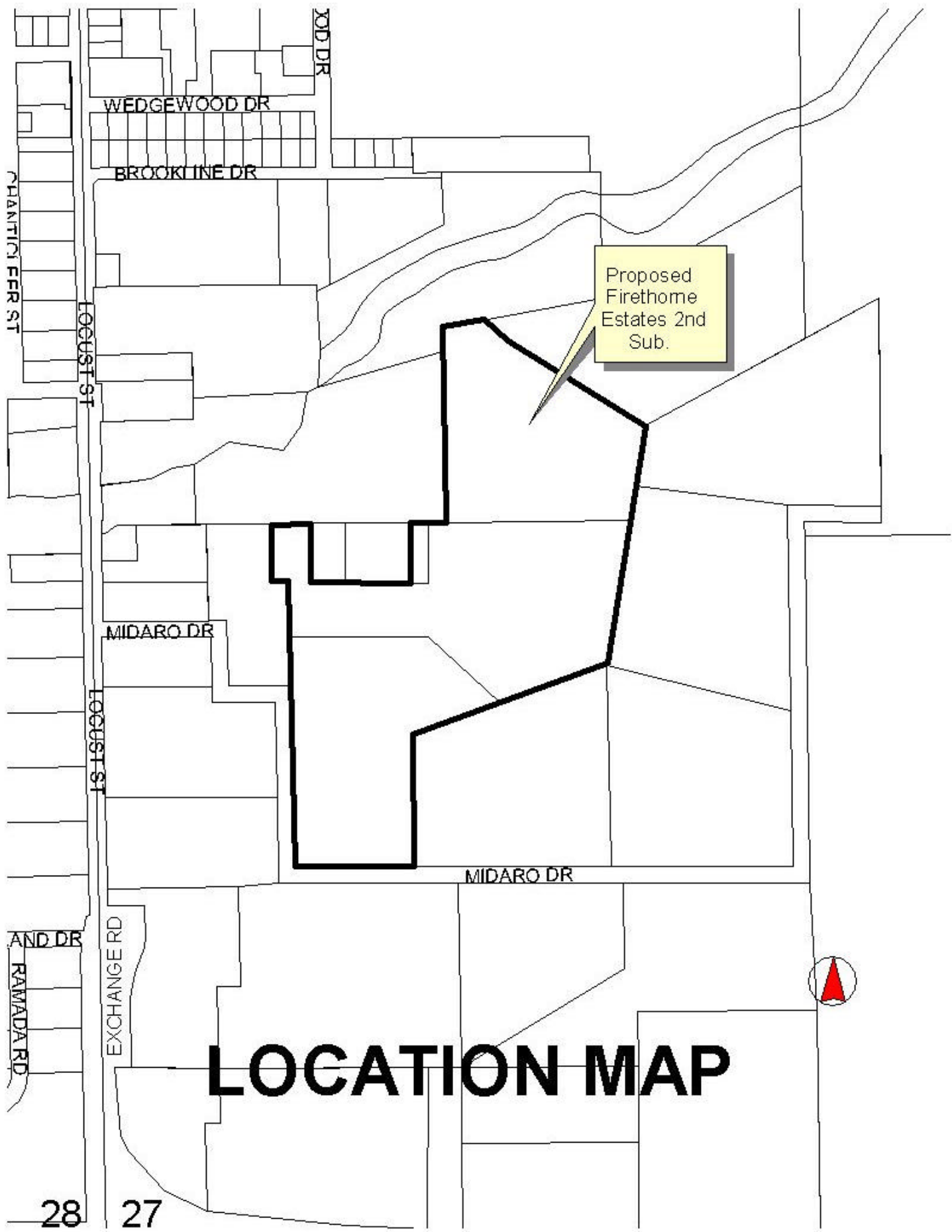
A motion was made by Ruge and seconded by Miller to **approve** and recommend that the City Council **approve** the final plat of Firethorne Estates Second Subdivision.

A roll call vote was taken and the motion passed with 9 members present voting in favor (Lechner, O'Neill, Eriksen, Miller, Obst, Ruge, Obermeier, Hayes, Wagoner) and 1 member (Amick) voting against.

Yours truly,

Chad Naby AICP
Planning Director

cc: City Attorney
Director of Utilities
Director of Public Works
Director of Building Inspections
Manager of Postal Operations
Rockwell & Associates



Proposed
Firehome
Estates 2nd
Sub.

LOCATION MAP

28 27

RESOLUTION 2003-254

WHEREAS, Michael D. Roush, a single person, Marlene C. Roush, a single person, and Dana Jelinek and Ron Jelinek, wife and husband, as owners, have caused to be laid out into lots, a tract of land comprising all of Lot One (1), Firethorne Estates Subdivision, a part of Lots Three (3) and Four (4) Island, and a part of the Northeast Quarter of the Southwest Quarter (NE1/4, SW1/4) all in the city of Grand Island, Hall County, Nebraska, under the name of FIRETHORNE ESTATES SECOND SUBDIVISION, and have caused a plat thereof to be acknowledged by them; and

WHEREAS, a copy of the plat of such subdivision has been presented to the Boards of Education of the various school districts in Grand Island, Hall County, Nebraska, as required by Section 19-923, R.R.S. 1943; and

WHEREAS, a form of subdivision agreement has been agreed to between the owners and the City of Grand Island.

NOW, THEREFORE, BE IT RESOLVED BY THE MAYOR AND COUNCIL OF THE CITY OF GRAND ISLAND, NEBRASKA, that the form of subdivision agreement hereinbefore described is hereby approved, and the Mayor is hereby authorized to execute such agreement on behalf of the City of Grand Island.

BE IT FURTHER RESOLVED that the final plat of FIRETHORNE ESTATES SECOND SUBDIVISION, as made out, acknowledged, and certified, is hereby approved by the City Council of the City of Grand Island, Nebraska, and the Mayor is hereby authorized to execute the approval and acceptance of such plat by the City of Grand Island, Nebraska.

- - -

Adopted by the City Council of the City of Grand Island, Nebraska, September 9, 2003.

RaNae Edwards, City Clerk

Approved as to Form	☐ _____
September 4, 2003	☐ City Attorney