



City of Grand Island

Tuesday, August 27, 2002

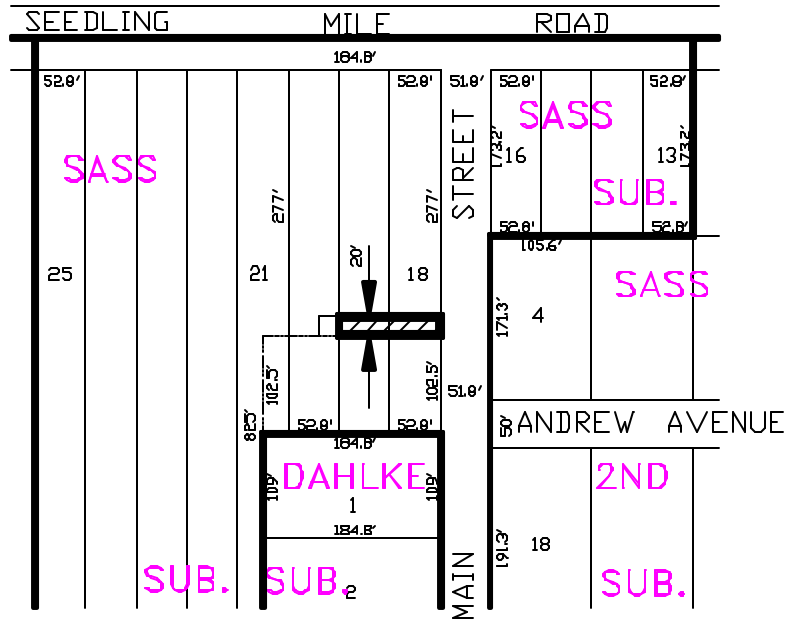
Council Session

Item E1

Public Hearing on Acquisition of Easements Located in Sanitary Sewer District 500, Seedling Mile area

Acquisition of easements located south of Seedling Mile Road and west of Shady Bend Road is required in order to have access to install, upgrade, maintain, and repair public sanitary sewer mains. It is appropriate to solicit public comment. The action item is contained under the Consent Agenda.

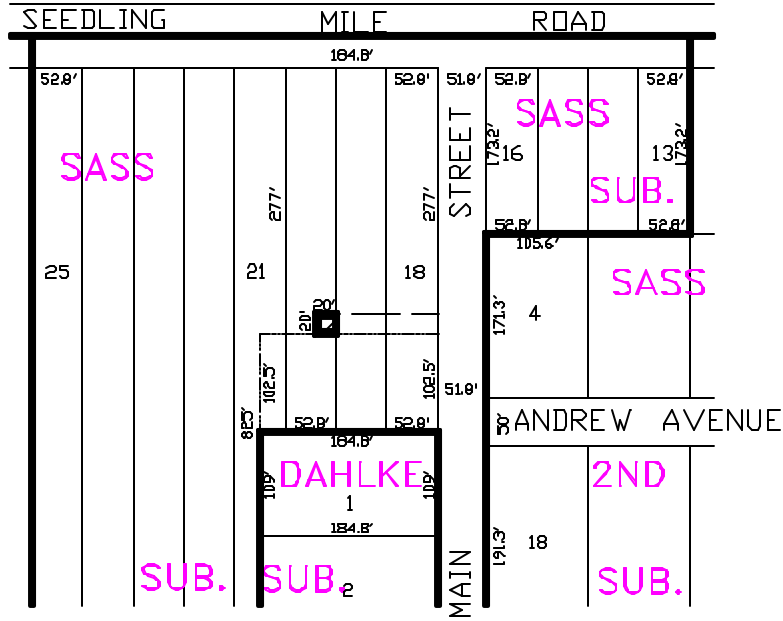
Staff Contact: Steve Riehle, City Engineer/Public Works Director



20' PERMANENT EASEMENT



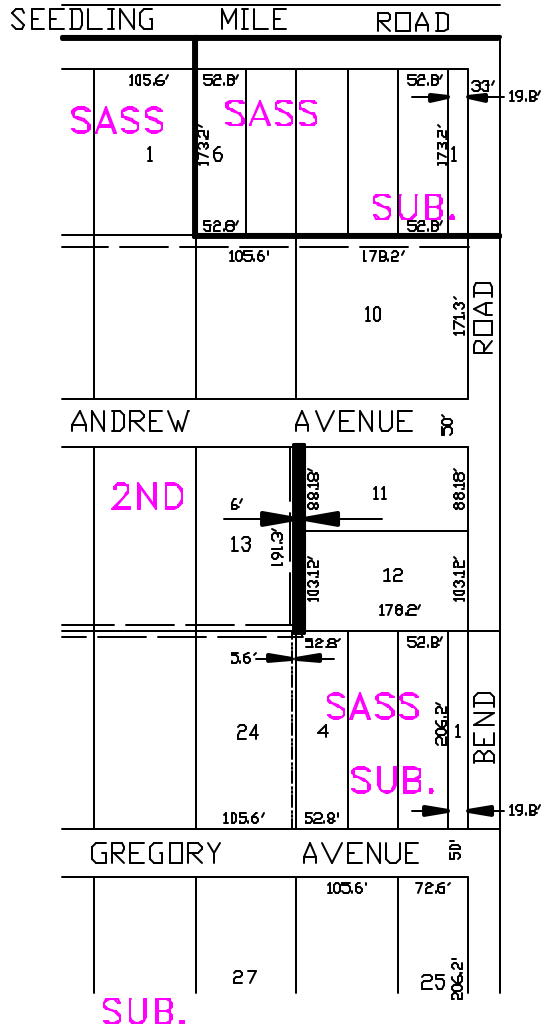
EXHIBIT "A"



20' PERMANENT EASEMENT

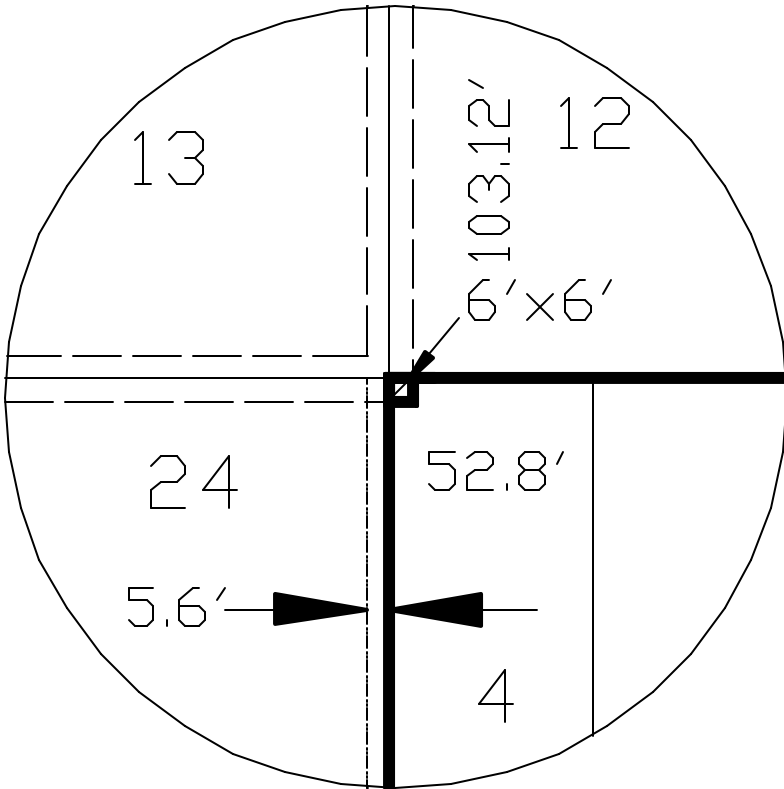
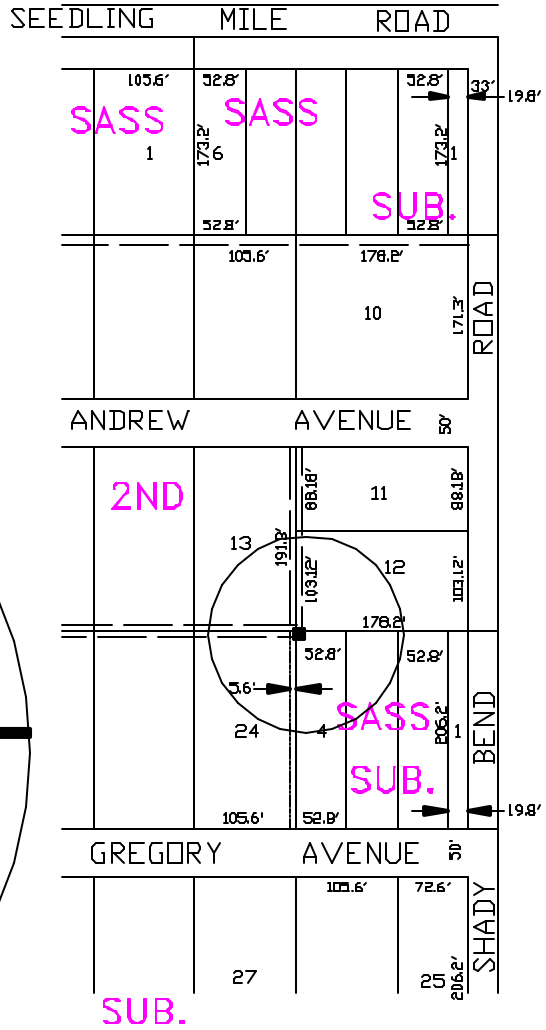


EXHIBIT "A"



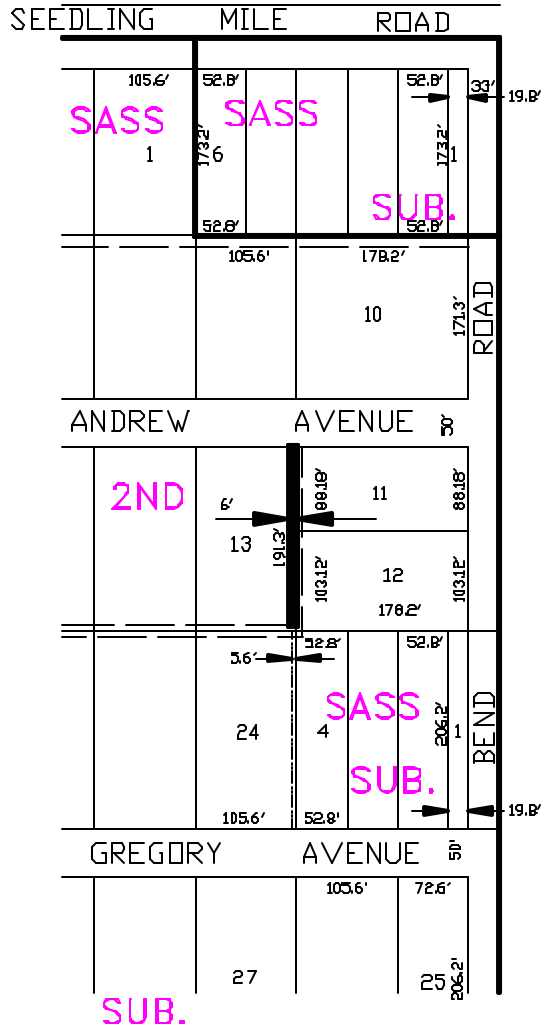
PERMANENT EASEMENT

EXHIBIT "A"



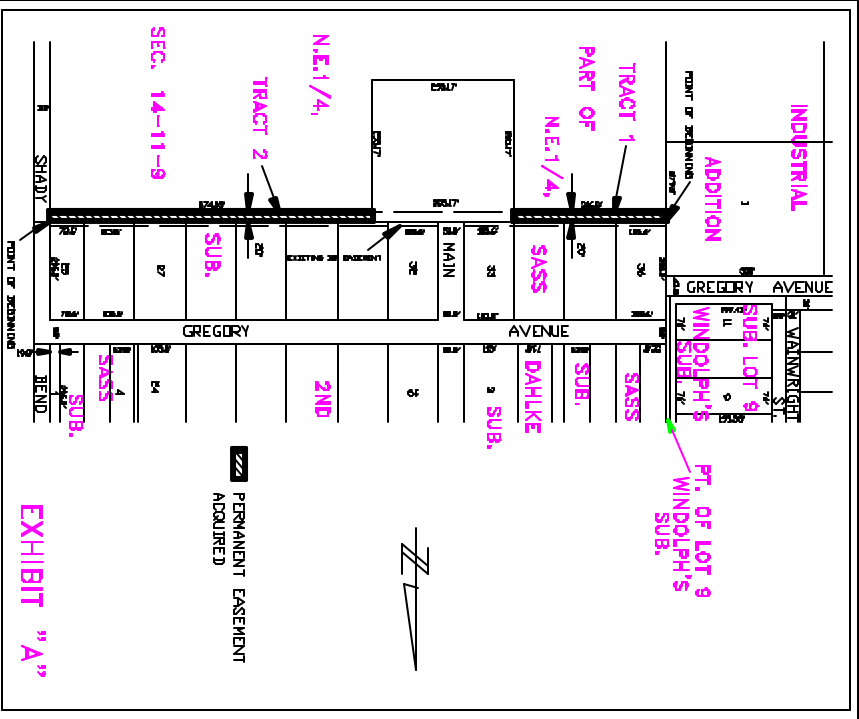
6' PERMANENT EASEMENT

EXHIBIT "A"



PERMANENT EASEMENT

EXHIBIT "A"



GRAND ISLAND

 2700 BURLING VICTORIAN DRIVE, WASHINGTON, D.C. 20007

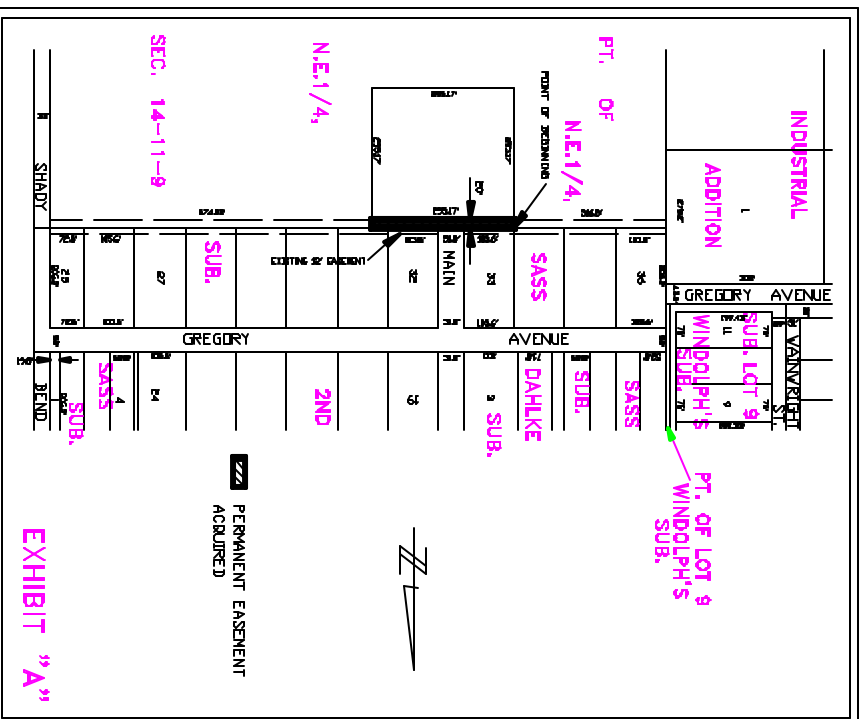
DATE: 0/26/02

 DRN BY: L.D.C.

 SCALE: 1"=200'

PLAT TO ACCOMPANY

 PERMANENT EASEMENT



GRAND ISLAND

 2700 BURLING VICTORIAN DRIVE, WASHINGTON, D.C. 20007

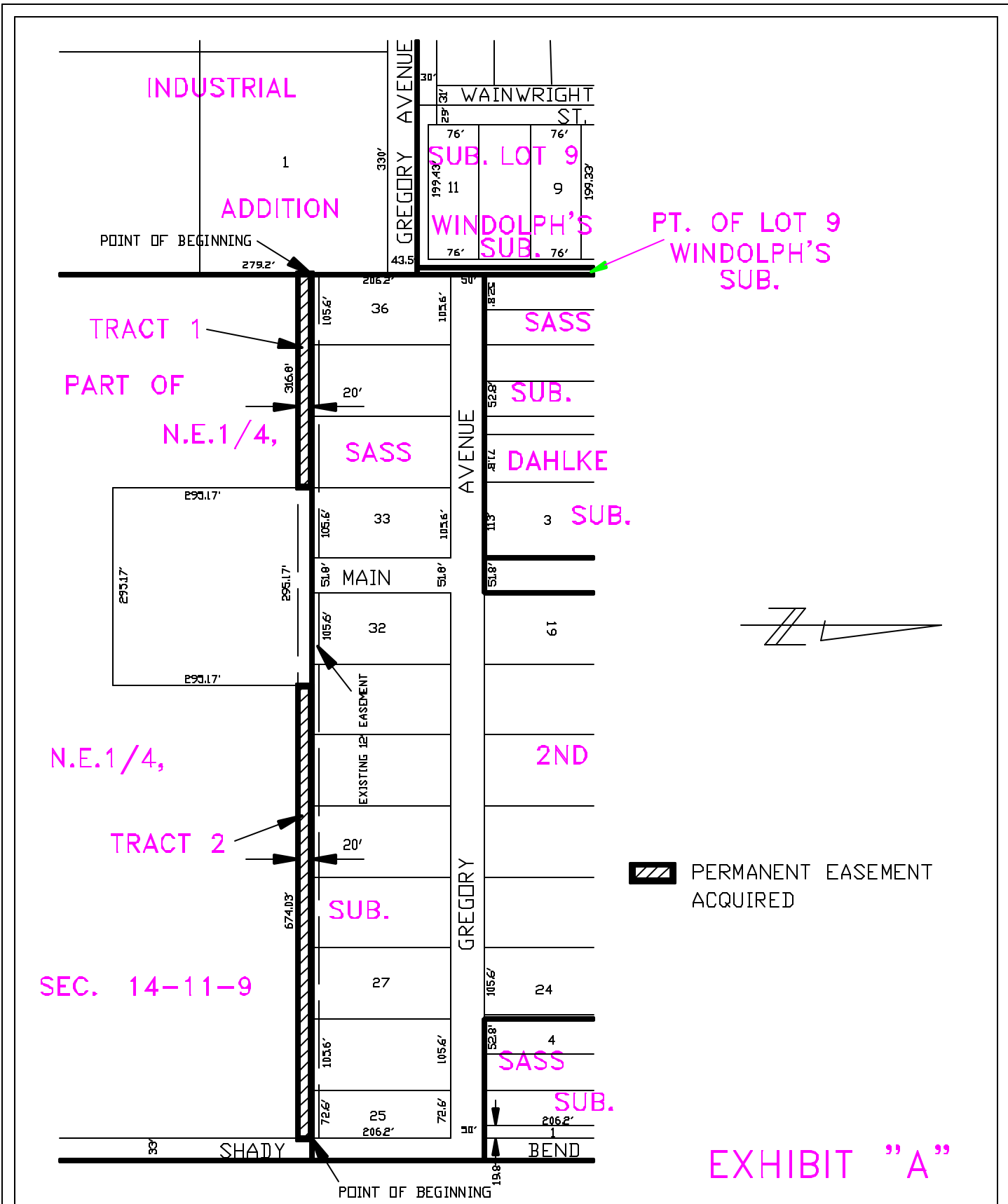
DATE: 3/26/02

 DRN BY: L.D.C.

 SCALE: 1"=200'

PLAT TO ACCOMPANY

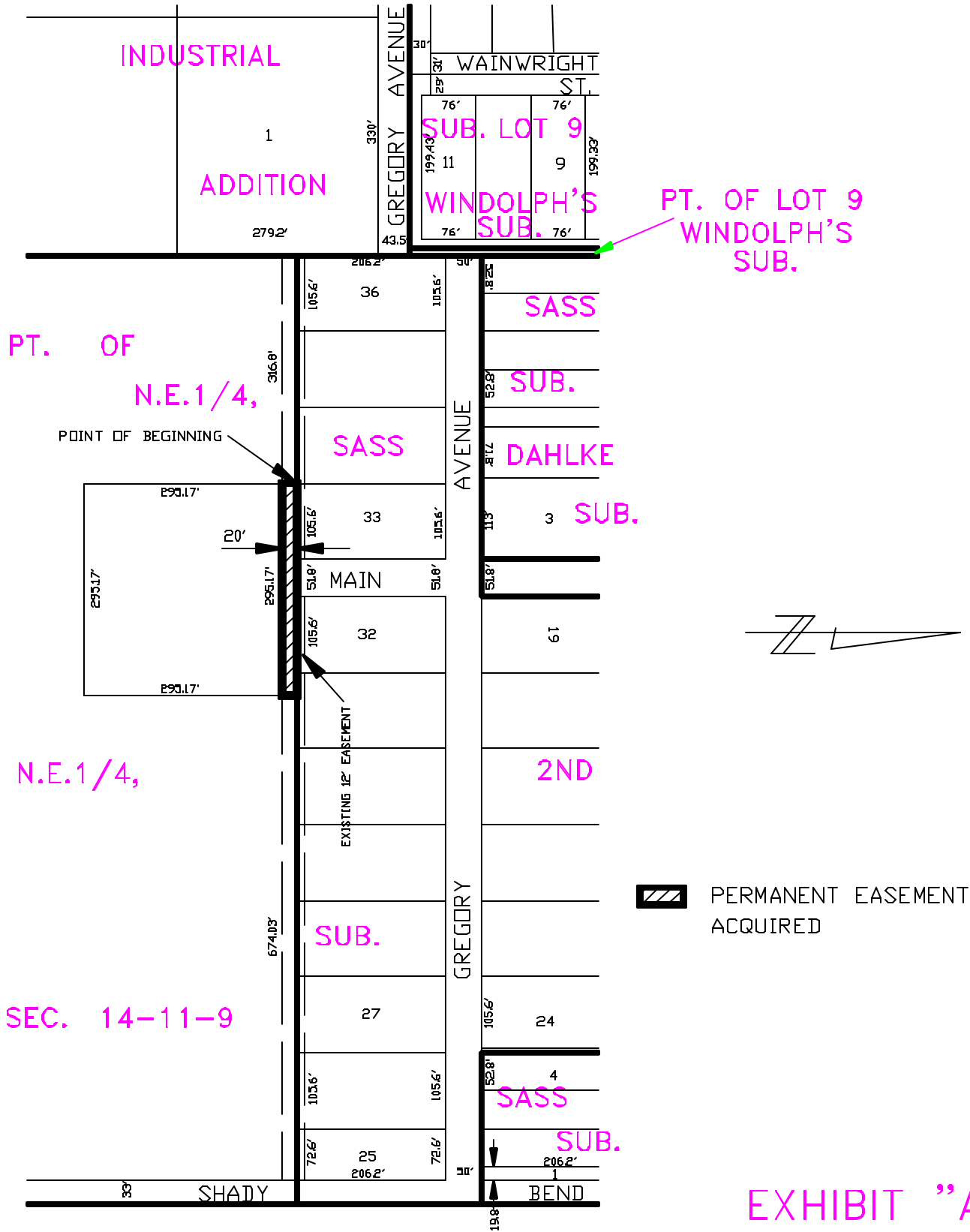
 PERMANENT EASEMENT



CITY OF GRAND ISLAND
PUBLIC WORKS DEPARTMENT

DATE: 0/26/02
 DRN BY: L.D.C.
 SCALE: 1"=200'

PLAT TO ACCOMPANY
 PERMANENT EASEMENT



CITY OF GRAND ISLAND
PUBLIC WORKS DEPARTMENT

DATE: 3/26/02
 DRN BY: L.D.C.
 SCALE: 1"=200'

PLAT TO ACCOMPANY
 PERMANENT EASEMENT