



City of Grand Island

Tuesday, May 07, 2002

Council Session

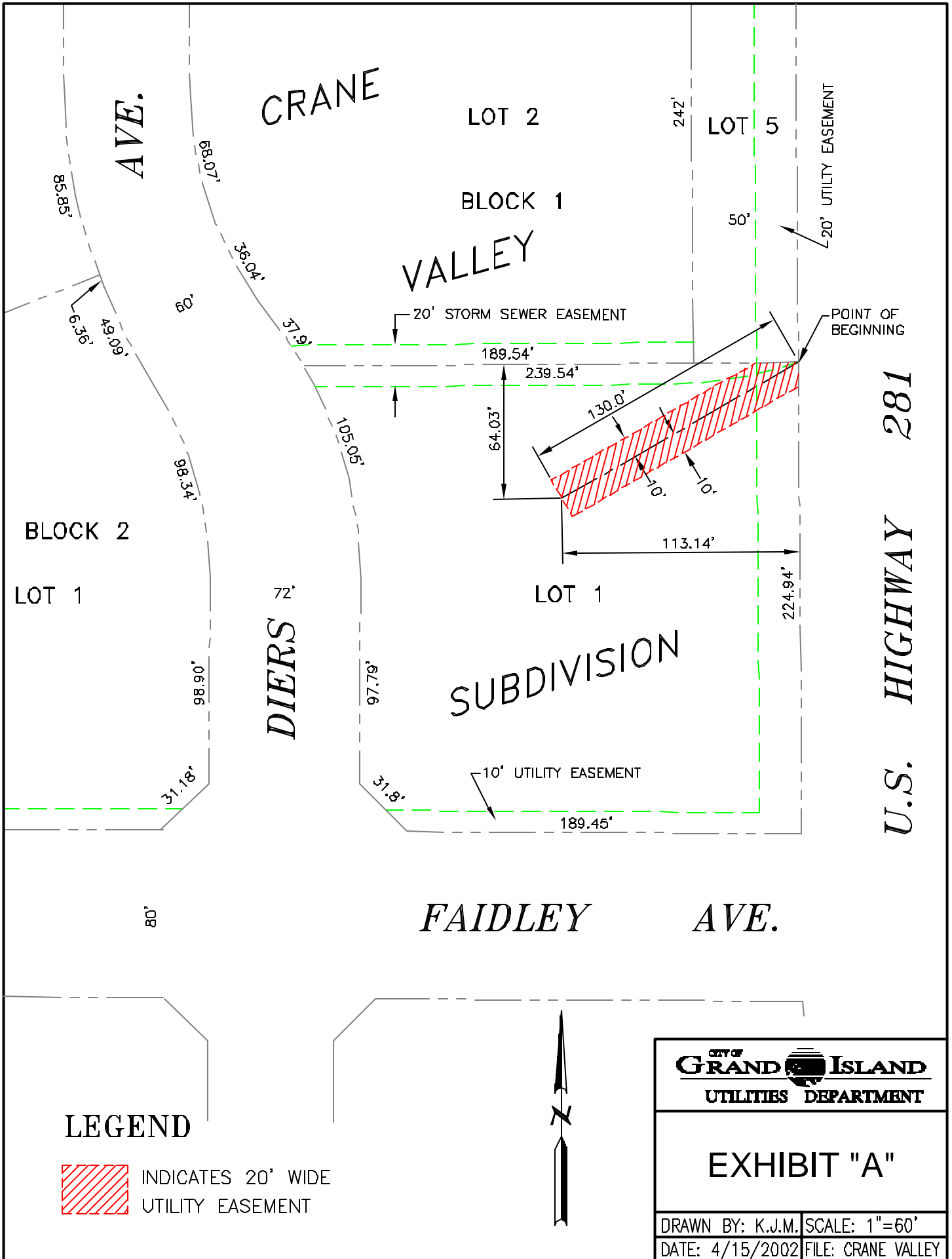
Item G9

#2002-124 - Approving Acquisition of Utility Easement - Grand Island P.H., Inc.

Nebraska State Law requires that acquisition of property must be approved by City Council. The Utilities Department needs to acquire an easement relative to property of Grand Island P.H., Inc., located in the northeast corner of property located at 707 North Diers Avenue - Faidley & U.S. Highway 281, in order to have access to install, upgrade, maintain, and repair power appurtenances, including lines and transformers.

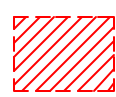
Pizza Hut is constructing a new building at this location. This easement will be used to locate a pad-mounted transformer to serve the new business. One dollar (\$1.00) for the easement will be paid to the grantor. See attached RESOLUTION.

Staff Contact: Gary R. Mader



U.S. HIGHWAY 281

LEGEND

 INDICATES 20' WIDE UTILITY EASEMENT

 CITY OF GRAND ISLAND UTILITIES DEPARTMENT	
EXHIBIT "A"	
DRAWN BY: K.J.M.	SCALE: 1"=60'
DATE: 4/15/2002	FILE: CRANE VALLEY

R E S O L U T I O N 2002-124

WHEREAS, a public utility easement is required by the City of Grand Island, from Grand Island P.H., Inc., a Nebraska corporation, to install, upgrade, maintain, and repair power appurtenances, including lines and transformers; and

WHEREAS, a public hearing was held on May 7, 2002, for the purpose of discussing the proposed acquisition of an easement and right-of-way through a part of Lot One (1), Block One (1) Crane Valley Subdivision in the city of Grand Island, Hall County, Nebraska, the centerline of the twenty (20.0) foot wide utility easement and right-of-way being more particularly described as follows:

Beginning at the northeast corner of Lot One (1), Block One (1) Crane Valley Subdivision; thence southwesterly to a point sixty four and three hundredths (64.03) feet southerly and one hundred thirteen and fourteen hundredths (113.14) feet westerly of the northeast corner of Lot One (1), Block One (1), said Crane Valley Subdivision.

The above-described easement and right-of-way containing 0.06 acres, more or less as shown on the plat dated April 15, 2002, marked Exhibit "A" attached hereto and incorporated herein by reference.

NOW, THEREFORE, BE IT RESOLVED BY THE MAYOR AND COUNCIL OF THE CITY OF GRAND ISLAND, NEBRASKA, that the City of Grand Island be, and hereby is, authorized to acquire a public utility easement from Grand Island P.H., Inc., a Nebraska corporation, on the above-described tract of land.

- - -

Adopted by the City Council of the City of Grand Island, Nebraska, May 7, 2002.

RaNae Edwards, City Clerk

Approved as to Form ? _____
May 2, 2002 ? City Attorney