



# City of Grand Island

Tuesday, January 22, 2002

Council Session

## Item E3

### **Public Hearing on Acquisition of Utility Easement - Midland Ag Services**

*Acquisition of a utility easement located west of Gunbarrel Road, 1/4 mile south of Capital Avenue, is required in order to have access to install, upgrade, maintain, and repair power appurtenances. This easement will be used to locate a new underground primary cable and single phase pad mounted transformer to serve a new home. It is appropriate to solicit public comment. The action item is contained under the Consent Agenda.*

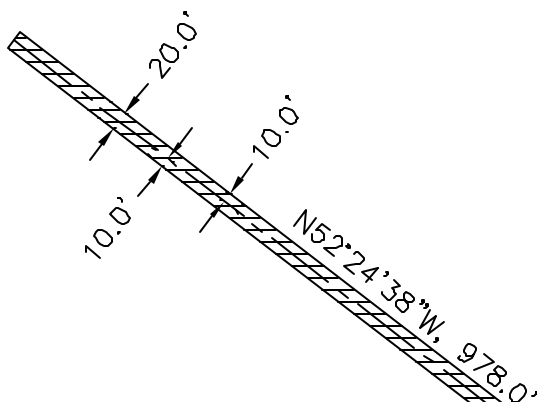
Staff Contact: Gary R. Mader



CAPITAL AVE.

SECTION LINE

NE CORNER  
SE 1/4, NE 1/4



PART OF  
SE 1/4, NE 1/4  
SEC. 12, T-11-N, R-9-W

POINT OF  
BEGINNING

WESTERLY R-O-W LINE  
GUNBARREL ROAD

SE CORNER NE 1/4

GUNBARREL ROAD

ASSUMED N00°00'00\"/>



LEGEND

 INDICATES UTILITY EASEMENT

**CITY OF GRAND ISLAND**  
UTILITIES DEPARTMENT

EXHIBIT "A"

DRAWN BY: K.J.M. SCALE: 1"=200'  
DATE: 12/13/2001 FILE: SEC121109