



City of Grand Island

Tuesday, January 22, 2002

Council Session

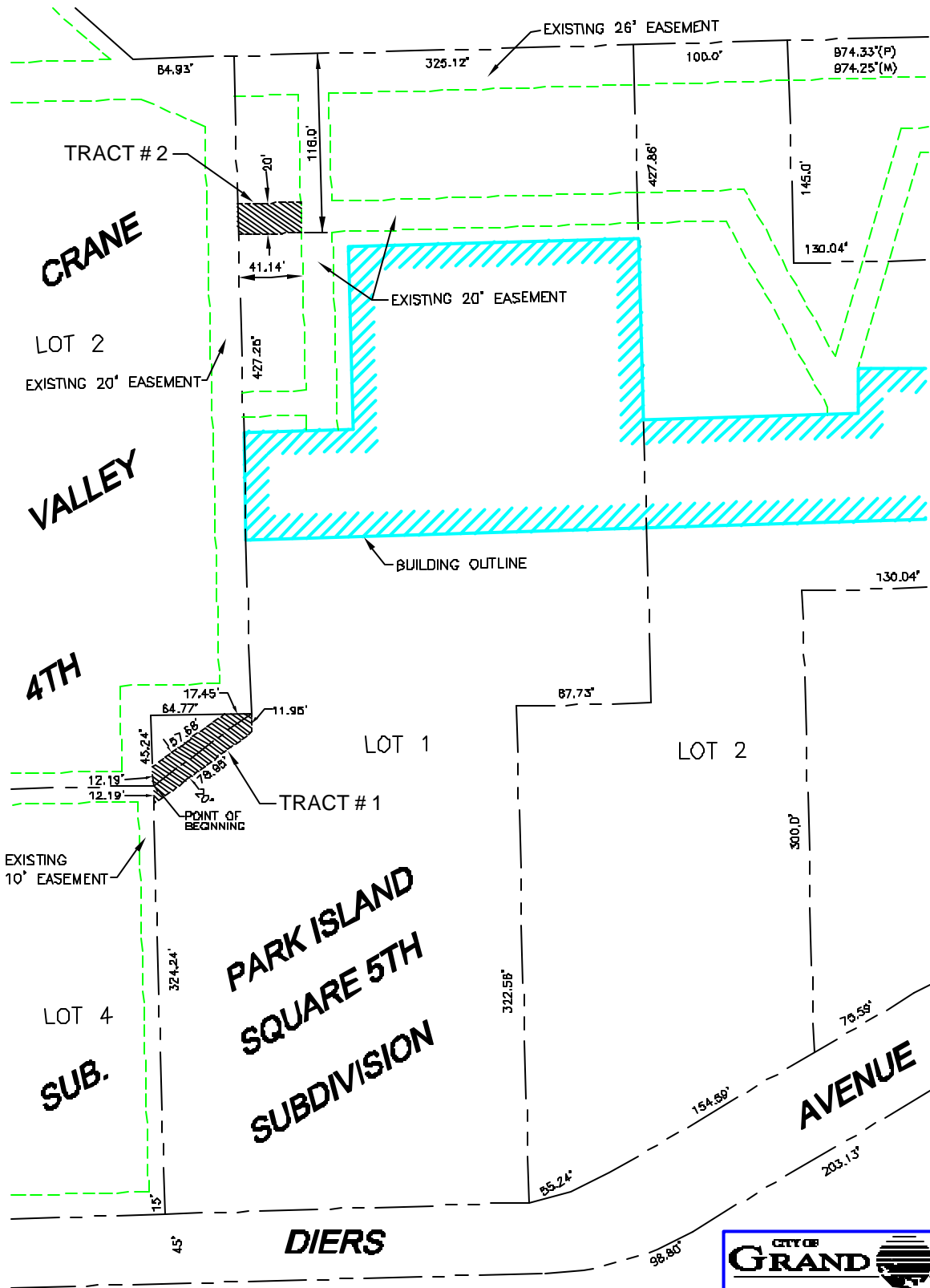
Item E2

Public Hearing on Acquisition of Utility Easement - Mid-Country Trading, L.L.C.


Acquisition of a utility easement located east and west of Whiskey Creek Steakhouse on Lot One, (1), Park Island Square 5th Subdivision, is required in order to have access to install, upgrade, maintain, and repair power appurtenances. This easement will be used to locate high voltage underground cable to serve the new strip mall immediately south of Whiskey Creek Steakhouse. It is appropriate to solicit public comment. The action item is contained under the Consent Agenda.

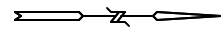
Staff Contact: Gary R. Mader





LEGEND

 INDICATES 20' WIDE UTILITY EASEMENT



CITY OF GRAND ISLAND
UTILITIES DEPARTMENT

EXHIBIT "A"

SHEET: 1 OF 1	SCALE: 1"=100'
DATE: 12/19/2001	FILE: PARK.ISLAND