



# City of Grand Island

Tuesday, January 08, 2002

Council Session

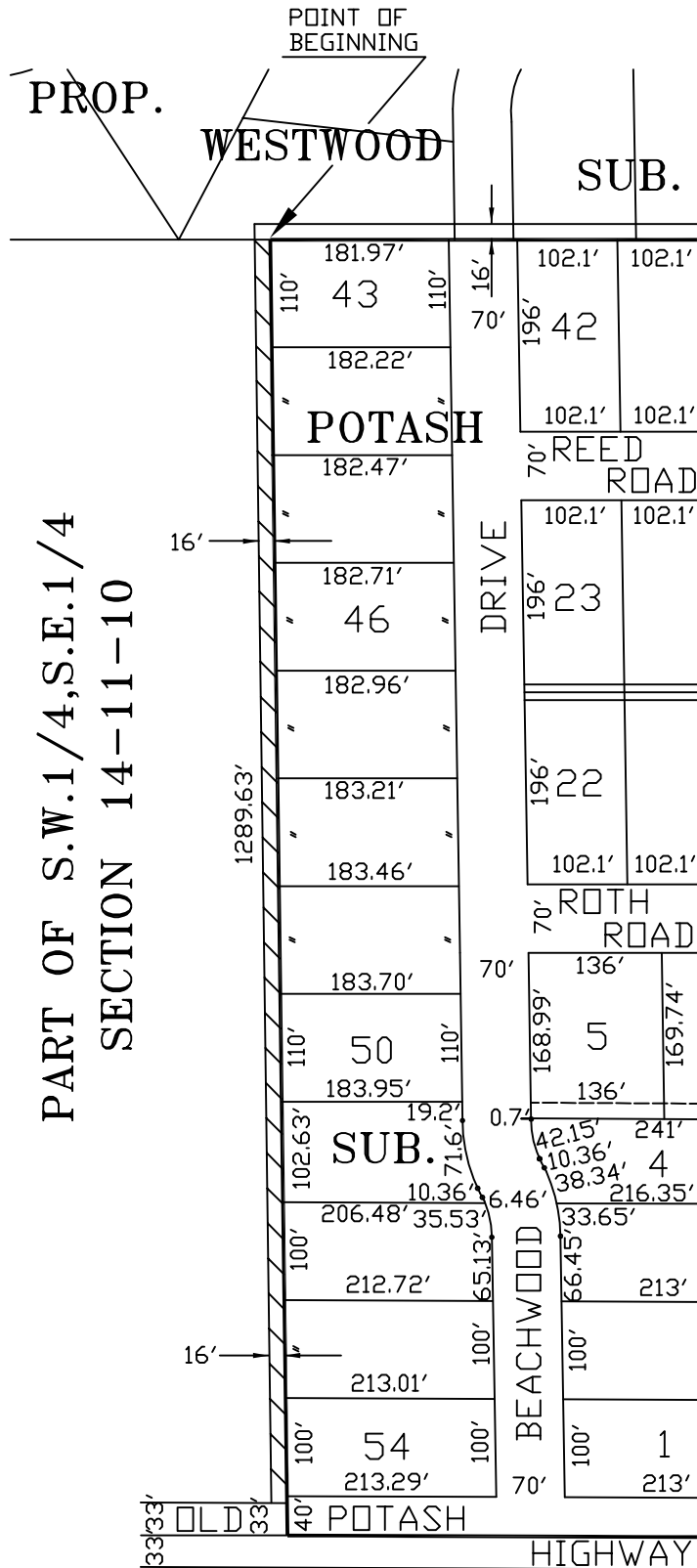
## Item E4

### **Public Hearing on Acquisition of Permanent Utility Easement for Sanitary Sewer District 493 Located In Part Of The SW 1/4, SE 1/4, Section 14-11-10**

*Acquisition of a utility easement located in part of the SW 1/4, SE 1/4, Section 14-11-10 along the west edge of Potash Subdivision, is required in order to have access to install, upgrade, maintain and repair sanitary sewer main and appurtenances. This easement will be used for installation of Sanitary Sewer District 493. It is appropriate to solicit public comment. The action item is contained under the consent agenda.*

Staff Contact: Steve Riehle, City Engineer/Public Works Director





PART OF S.W.1/4, S.E.1/4  
SECTION 14-11-10

16' PERMANENT EASEMENT

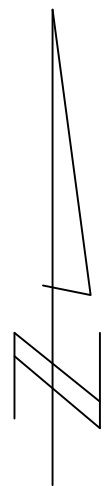


EXHIBIT "A"