



City of Grand Island

Tuesday, January 08, 2002

Council Session

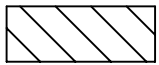
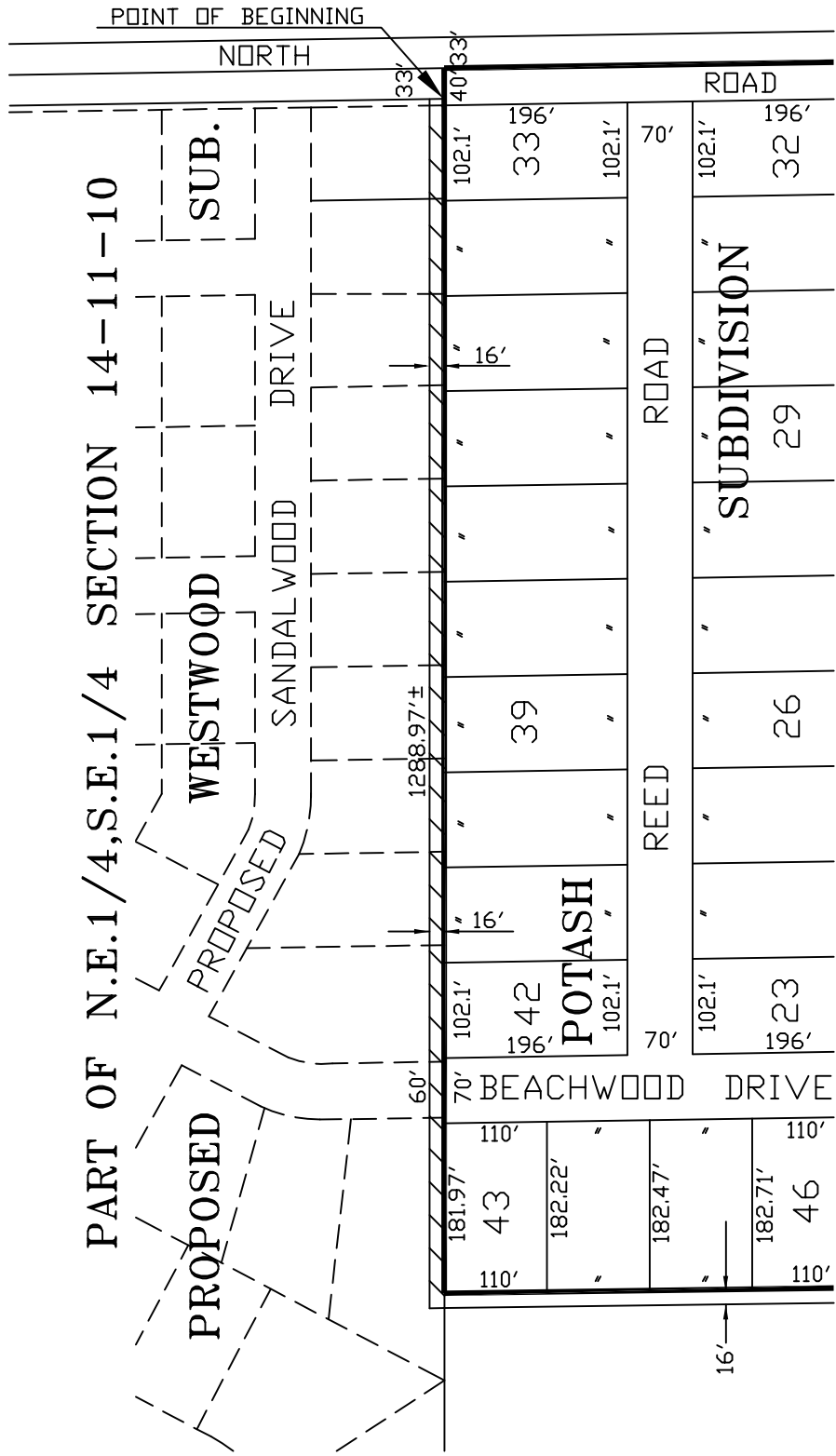
Item E3

Public Hearing on Acquisition of Permanent Utility Easement for Sanitary Sewer District 493 Located In Part Of The NE 1/4, SE 1/4, Section 14-11-10

Acquisition of a utility easement located in part of the NE 1/4, SE 1/4, Section 14-11-10 along the north edge of Potash Subdivision, is required in order to have access to install, upgrade, maintain, and repair sanitary sewer main and appurtenances. This easement will be used for installation of Sanitary Sewer District 493. It is appropriate to solicit public comment. The action item is contained under the Consent Agenda.

Staff Contact: Steve Riehle, City Engineer/Public Works Director





16' PERMANENT EASEMENT



EXHIBIT "A"

CITY OF
GRAND ISLAND
 PUBLIC WORKS DEPARTMENT

DATE: 11-5-01
 DRN BY: P.E.S.
 SCALE: 1"=200'

PLAT TO ACCOMPANY
 PERMANENT EASEMENT
 ACQUISITION