

---

# City of Grand Island

## Item E5

### **Public Hearing on Acquisition of Utility Easement Located at 1508 East Stolley Park Road**

*Acquisition of utility easement relative to the property of Richard D. and Jacqueline A. Rezac, Located at 1508 East Stolley Park Road is required in order to have access to install, upgrade, maintain, and repair power appurtenances. This easement is for an overhead distribution line originally constructed over 20 years ago. A termination pole had to be moved. To make sure the pole remained in the easement, an investigation of the property documents was completed. This revealed that no easement existed. The easement document will correct that situation and allows for the relocation of the termination pole. It is appropriate to solicit public comment. The action item is contained under the Consent Agenda.*



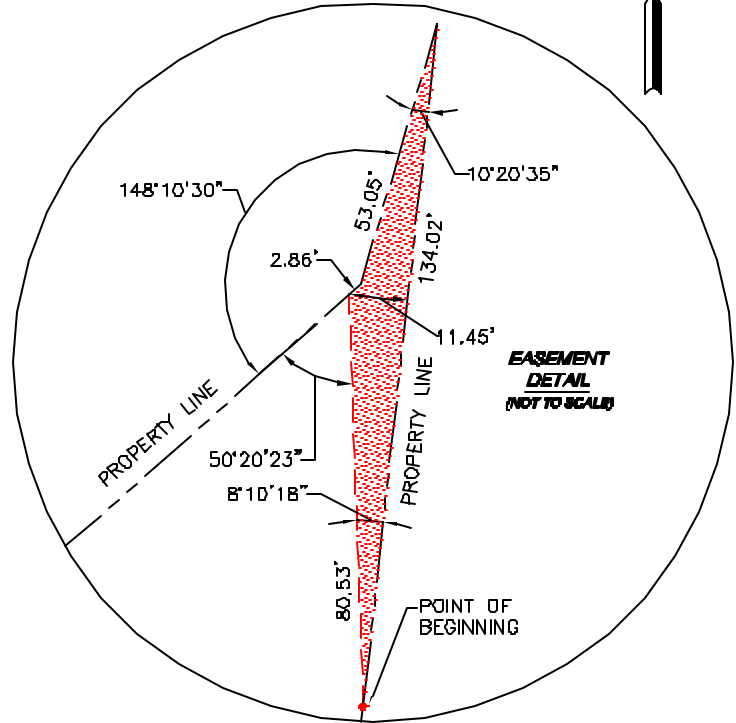
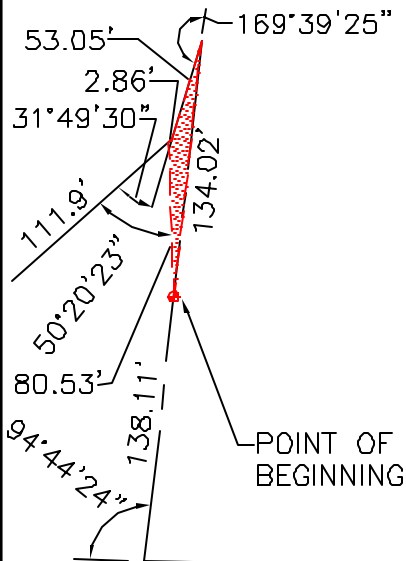
**Tuesday, December 18, 2001**

**Council Session**

SOUTH LINE  
LOT 3 ISLAND

PART OF LOT 4 ISLAND  
AND  
W 1/2, SE 1/4, SW 1/4  
SEC 23, T-11-N, R-9-W

65' WIDE ELEC. TRANS. EASEMENT



GRANTOR:  
RICHARD D. REZAC & JACQUELINE A. REZAC  
HUSBAND & WIFE

SE CORNER,  
SW 1/4, SEC. 23-11-9

ROAD  
STUHR

SW CORNER,  
SEC. 23-11-9

1,981.68'  
**STOLLEY PARK ROAD**

SE CORNER  
W 1/2, SE 1/4, SW 1/4,  
SEC 23-11-9

CITY OF  
**GRAND ISLAND**  
UTILITIES DEPARTMENT

**EXHIBIT "A"**

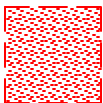
DRAWN BY: ZEX

SCALE: 1"=100'

DATE: 11/26/2001

FILE: SEC. 23-11-9

**LEGEND**



INDICATES UTILITY EASEMENT