



City of Grand Island

Tuesday, May 6, 2014

Study Session

Item X1

Continued Discussion of City Space Needs

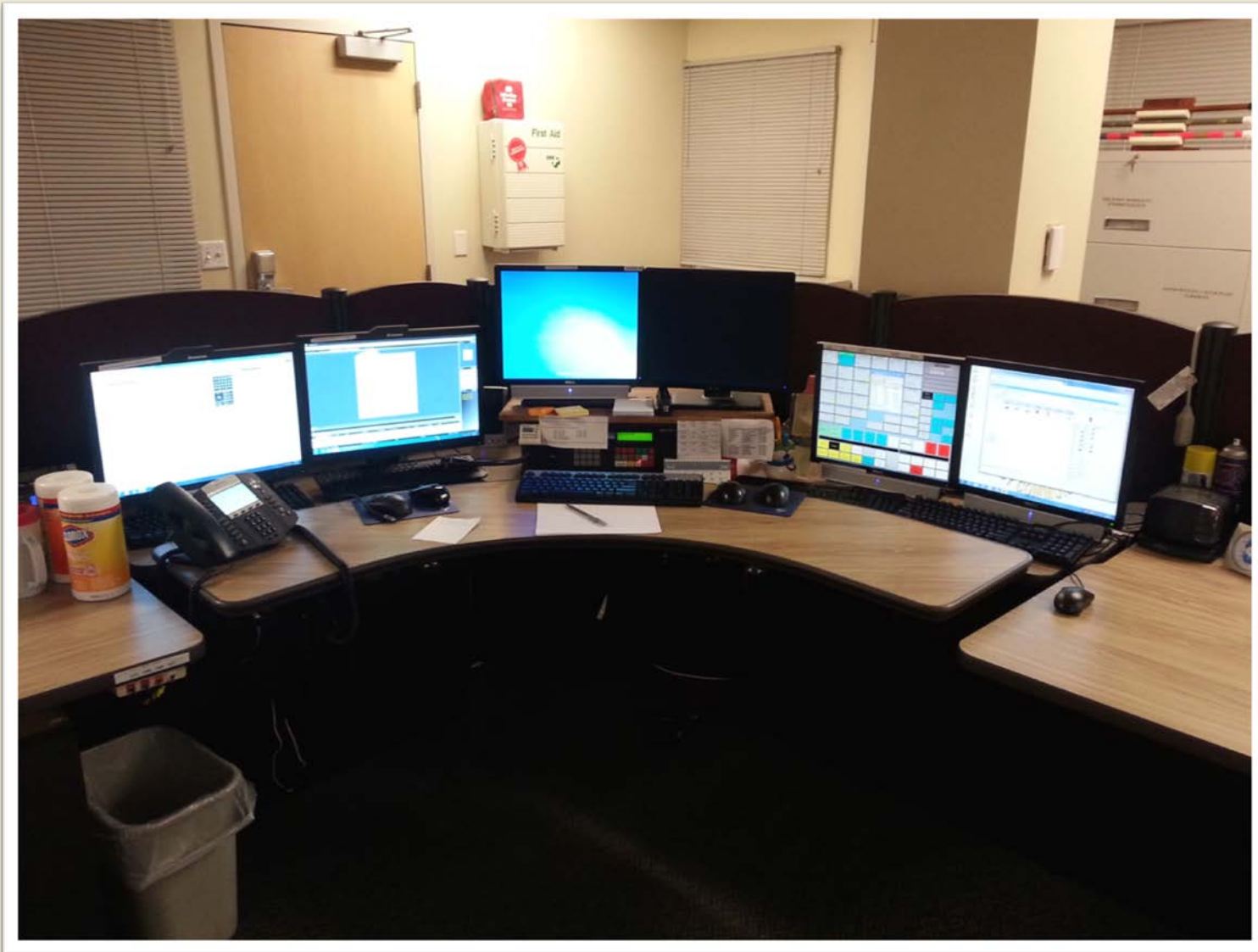
Staff Contact:

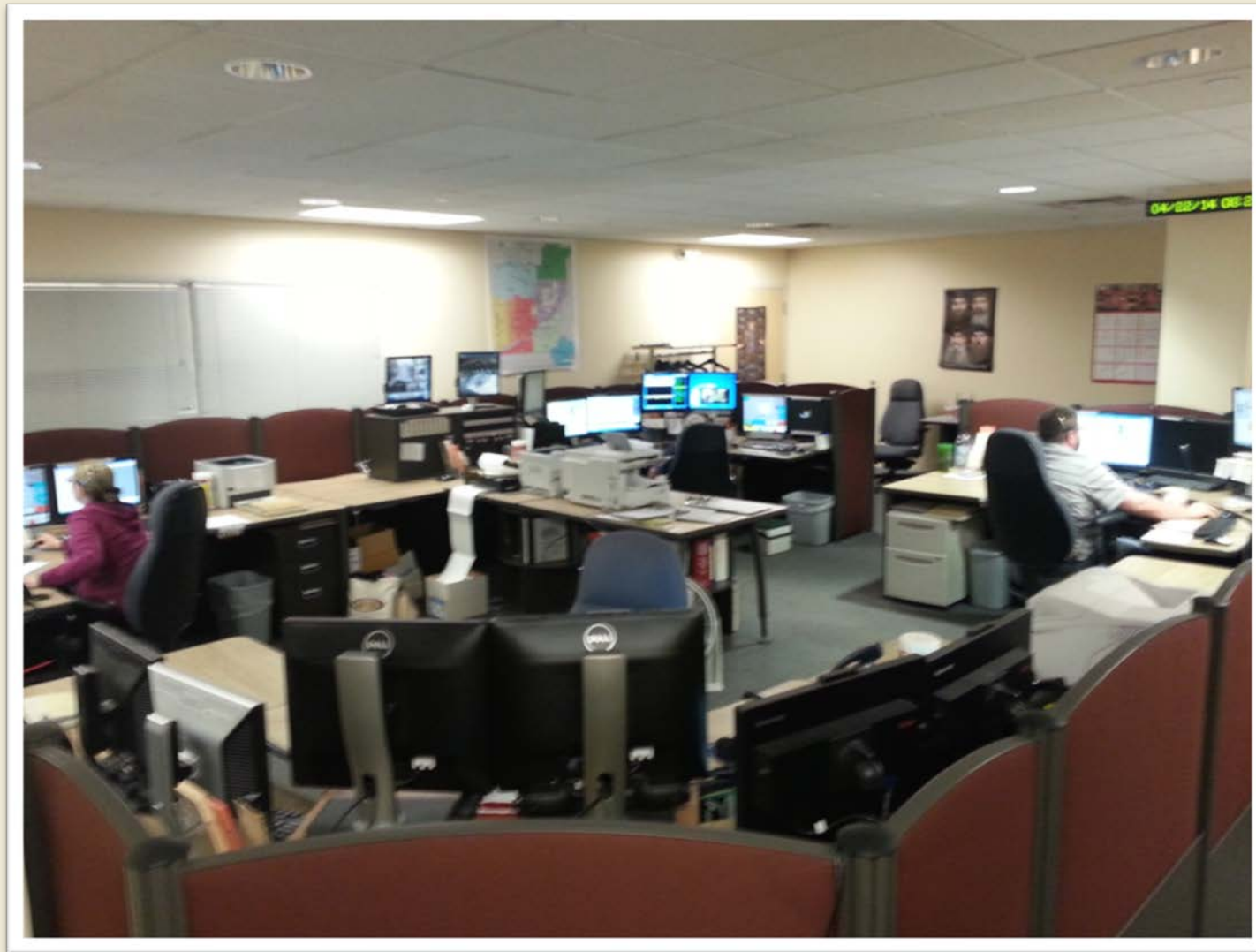
Continued Discussion of City Space Needs

Need for Alternate 911 Center

Agenda

- Current 911 Situation
- Capabilities Comparison
- Possible Solutions
- Costs and Challenges

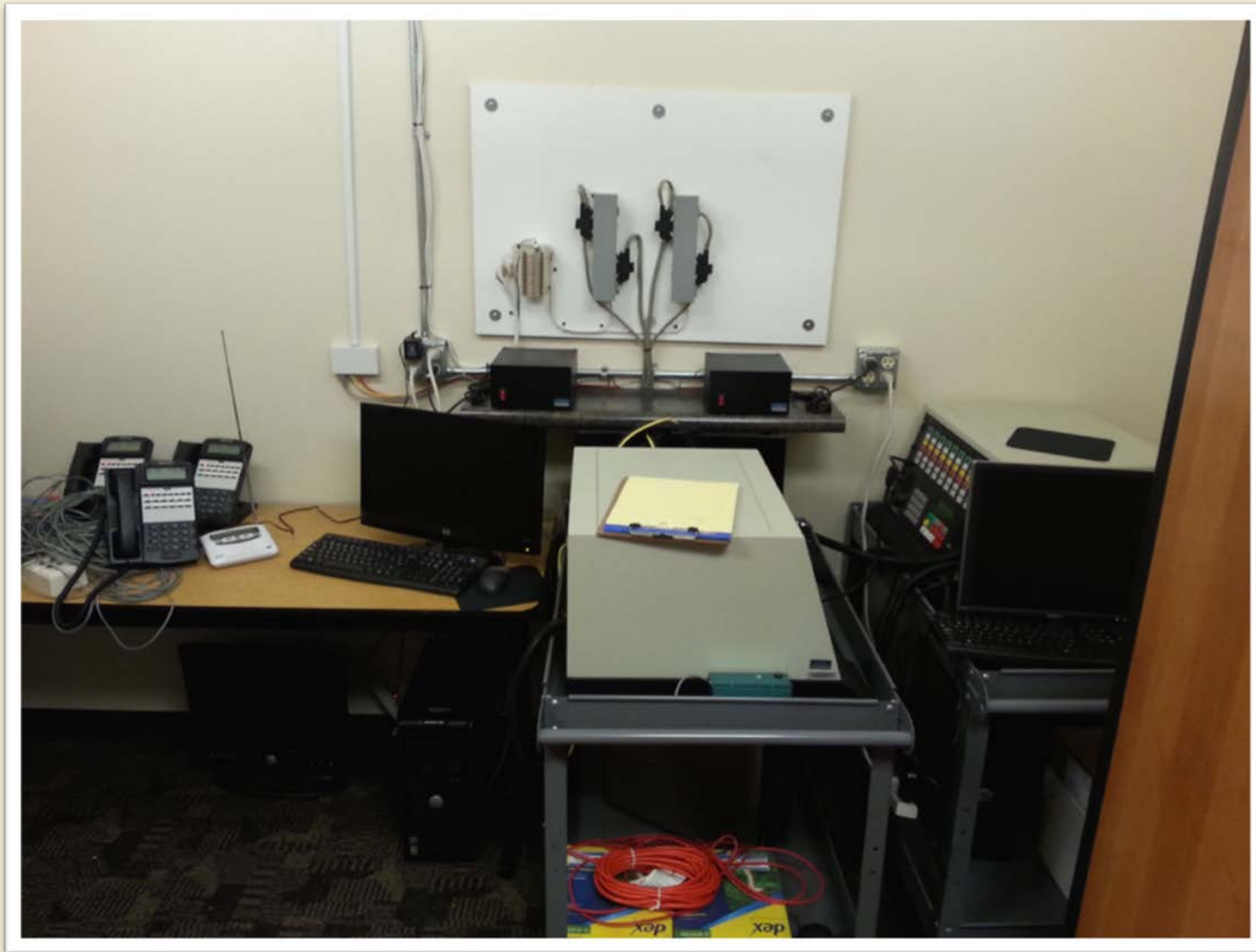


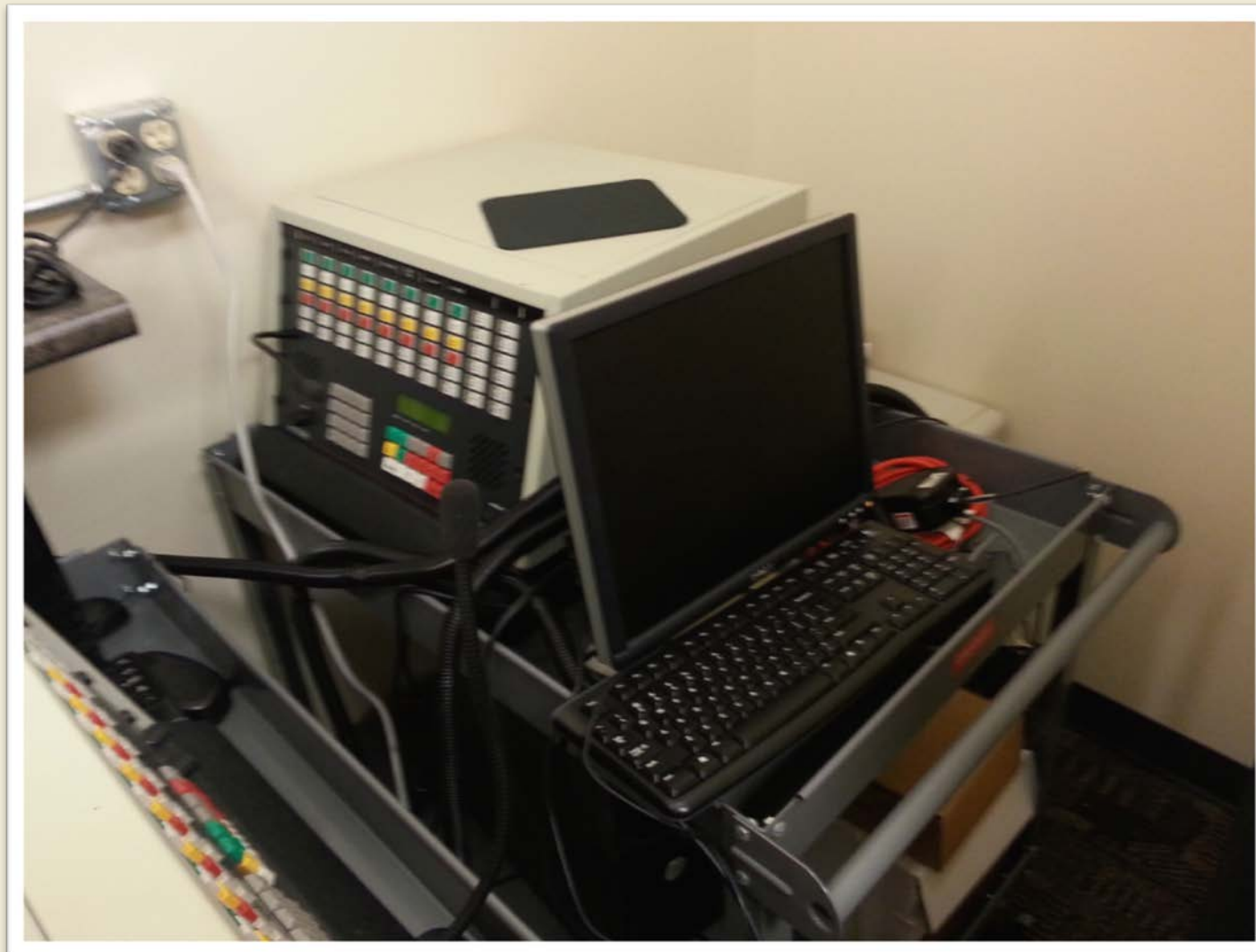


Current Alternate 911

- Equipment stored in a closet of Fire Station #1
- Mobilizing this equipment takes 30-45 minutes
- Equipment differs from main center (radios, phones, etc.)
- Difficult to test & exercise regularly
 - Update PC software, radios, paging











Capability Comparison

Function	Main	Current Alternate
Radio Consoles	4 Full Consoles	2 Limited Consoles
Radio Equipment	High Traffic Control Stations	Mobile Radios
Radio Antenna	Tower Mounted	Roof Mounted
Interoperability	Statewide Radio & Paraclete	None
911 Auto Name ID	Full Capability	None
911 Auto Number ID	Full Capability	Simple Caller ID
911 Auto Location ID	Landline & wireless	None
911 Trunk Lines	5 Dedicated 911 Lines	None: Transfer to business lines
911 Mapping	Full GIS & Pictometry	None
Phone & Radio Recording	32 recorded lines/channels	None

Comparison Continued

Function	Main	Current Alternate
Weather Warning	Full siren paging by zones	Limited to county-all
Weather Warning	NAWAS phone connection	None
CAD and Records Management	Full Spillman Network Connectivity	Limited by slow, wireless connection speed
Law Enforcement Support	Full teletype for state records, weather warnings, etc.	No Teletype
Hard Documentation	Printer	None
Other communication	Fax	None
Alarm monitoring	Full monitoring of 300 customers	None
Back up power	UPS batteries and Generator	Generator only

Benefits of Full Alternate

- Maintain our obligation for continuity of operations.
- Provide geo-diverse 911 system for redundancy.
- Provide full capabilities for 911 functions
 - radio, telephone, teletype, alarm monitoring and weather warnings
- Allow for expanded capacity in a disaster.
Overcoming the lack of “mutual aid” in 911.

911 Option A

- Establish new, main 911 center. Install a smaller, alternate 911 in City Hall.

Pros

- Solves both alternate 911 and EOC needs.
- Provides new 911 with long term potential.
- Provides City Hall with room to move staff.

Cons

- Most expensive construction costs
- Long timeline
- Most complex planning
- Possibility of higher ongoing costs for facility.

911 Option B

- Establish new, improved alternate 911 location.

Pros

- Provides fully functional alternate 911.
- Moderate cost for renovation/construction
- Lower ongoing costs for facility than Option A

Cons

- Does not provide long-term solution to current 911.
- *May* not solve alternate EOC issues.

911 Option C

- Improve capabilities of current alternate 911 location.

Pros

- Cheapest of all options
- Lowest ongoing costs
- Quickest immediate impact.

Cons

- May not accommodate necessary functions.
- May not be sufficient in an event.
- No solution to alternate EOC.

Costs & Challenges

- New radio system & geo-diverse 911 system
- Improved network for Spillman.
- Associated equipment (recorder, NAWAS, printers/copier, fax, etc.)
- New alarm monitor equipment
- Purchase/Move furniture
- Increases in annual operational budget (phone lines, network connectivity, ISP, etc.)

Need for Fire Station #2 Replacement



Station opened in 1957

- Currently busiest fire station in Grand Island
- Responded to 1847 calls in 2013 (41% of all calls)
- Staffed by 5 to 6 GIFD personnel
- Engine 2, Ambulance 2, and Ambulance 22
- Serves as a tornado shelter for surrounding area

Issues with current station

- Apparatus must be backed in off Broadwell Ave.
- Requires spotters to block traffic
- Places personnel in a dangerous situation
- Traffic backs up in front of station from 5 Points
- Larger apparatus harder to back in







Issues with current station



Issues with current station

- Diverse work force and student riders
- Dormitory style sleeping quarters
- Lack of privacy

Issues with current station



Issues with current station

Lack of dedicated classroom/training room



Issues with current station

- Increased maintenance costs over the years
 - 2013 - \$44,499
 - 2012 - \$8,143
 - 2011 - \$10,053
 - 2010 - \$21,120
\$90,565

Issues with current station

Poor parking access off alley

History of vehicle break-ins



Future needs

- Larger truck bay
- Larger/dedicated classroom
- Private sleeping quarters
- Male/female locker rooms
- Room for additional apparatus/crews
- Increased need for airport support and response

Options for 911/Fire

- Build new fire station #2
- Build joint facility for both 911 center and fire



Next Steps

Where do we go from here?

Request for Qualifications (RFQ)

- Research current practices
- Assess the City's needs
- Develop several concepts with rough estimates
- Produce plans and specifications
- Identify potential locations
- Oversee construction