



Hall County Regional Planning Commission

Wednesday, February 18, 2015
Regular Meeting

Item M4

Grand Island Public Schools Subdivision

Staff Contact: Chad Nabity

January 27, 2015

Dear Members of the Board:

RE: Final Plat – Grand Island Public Schools Subdivision – Final Plat.

For reasons of Section 19-923 Revised Statutes of Nebraska, as amended, there is herewith submitted a final plat of Grand Island Public Schools Subdivision, located in the City of Grand Island, in Hall County Nebraska.

This final plat proposes to create 1 lot, on a tract of land located in Part of the West Half of the Southeast Quarter (W1/2, SE1/4), of Section Twenty One (21), Township Eleven (11) North, Range Nine (9) West of the 6th P.M. all in the City Of Grand Island, Hall County, Nebraska, said tract containing 30.71 acres.

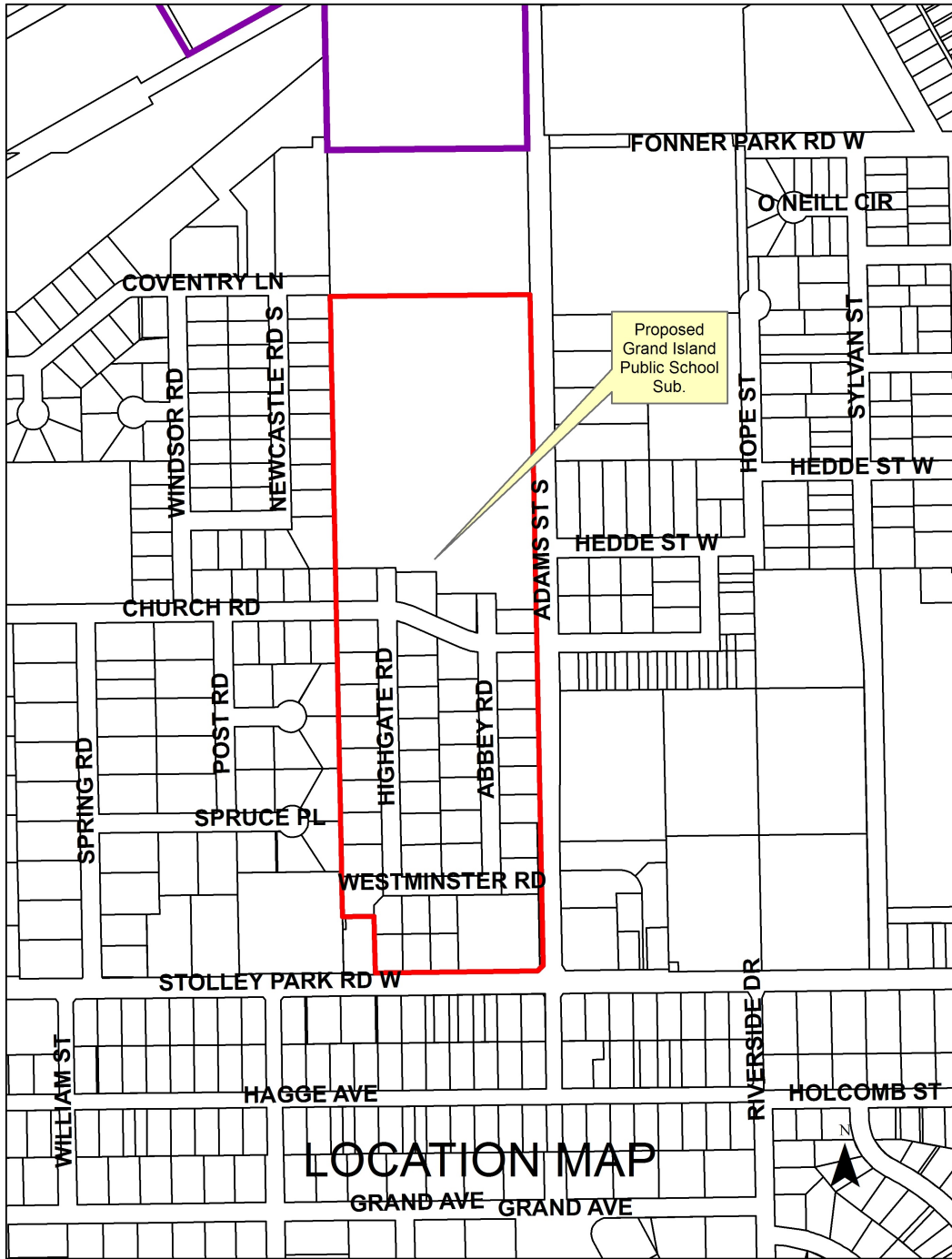
You are hereby notified that the Regional Planning Commission will consider this final plat at the next meeting that will be held at 6:00 p.m. on February 4, 2015, in the Council Chambers located in Grand Island's City Hall.

Sincerely,

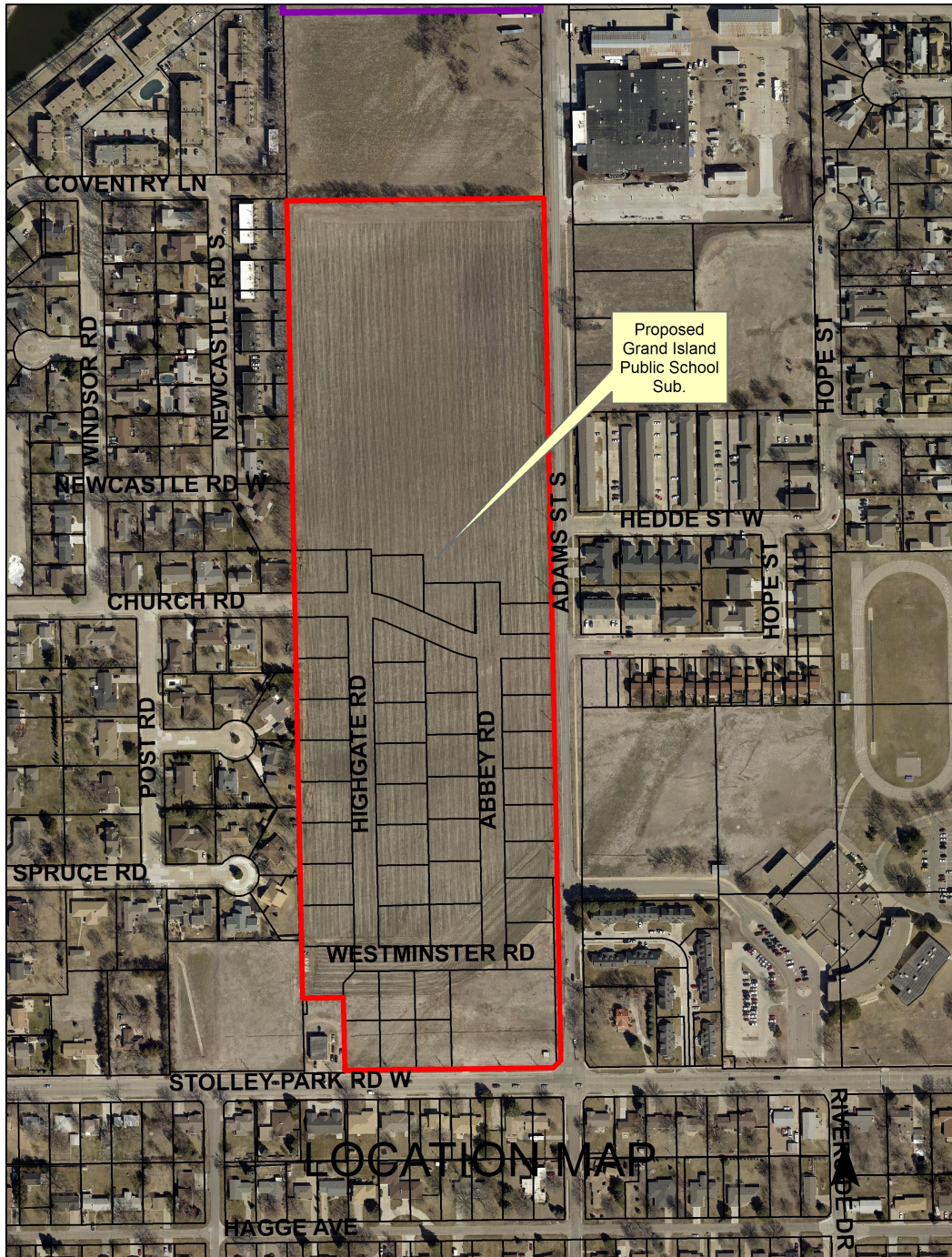
Chad Nabity, AICP
Planning Director

Cc: City Clerk
City Attorney
City Public Works
City Building Department
City Utilities
Manager of Postal Operations
Olsson Associates

This letter was sent to the following School Districts 1R, 2, 3, 19, 82, 83, 100, 126.



LOCATION MAP
 GRAND AVE GRAND AVE



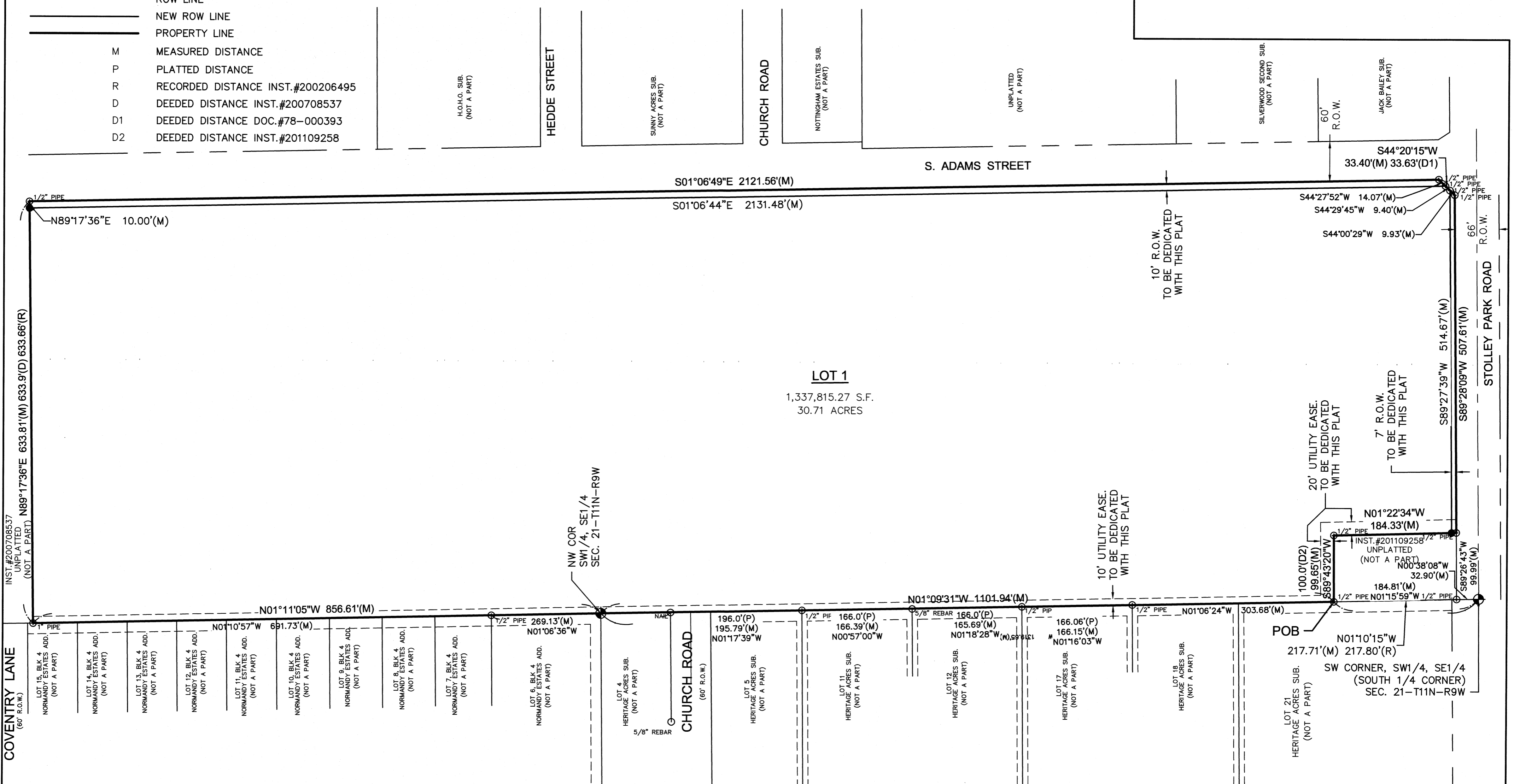
GRAND ISLAND PUBLIC SCHOOLS SUBDIVISION

to the CITY OF GRAND ISLAND, HALL COUNTY, NEBRASKA

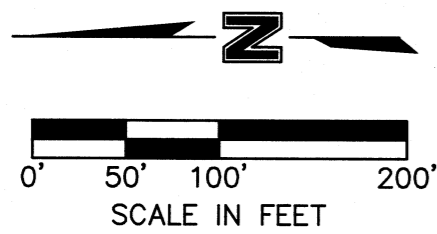
FINAL PLAT

LEGEND

- ◆ SECTION CORNER
- SET CORNER (5/8"x24" REBAR W/CAP)
- ⊙ FOUND CORNER (AS NOTED)
- ROW LINE
- NEW ROW LINE
- PROPERTY LINE
- M MEASURED DISTANCE
- P PLATTED DISTANCE
- R RECORDED DISTANCE INST.#200206495
- D DEEDED DISTANCE INST.#200708537
- D1 DEEDED DISTANCE DOC.#78-000393
- D2 DEEDED DISTANCE INST.#201109258



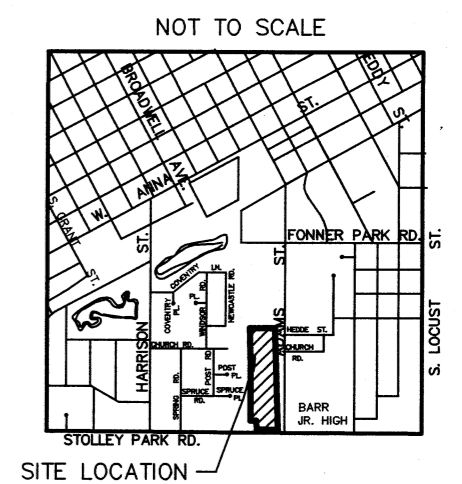
LOT 1
1,337,815.27 S.F.
30.71 ACRES



SECTION TIES
SOUTH 1/4 CORNER, SEC. 21-T11N-R9W
FOUND SPIKE
N 32.90' TO 1/2" PIPE
NNE 65.44' TO SW CORNER OF BUILDING
NE 105.22' TO 1/2" PIPE
NE 78.82' TO POWER POLE
ENE 220.35' TO POWER POLE w/LIGHT

NORTHEAST CORNER, SE1/4, SW1/4, SEC. 21-T11N-R9W
FOUND 1/2" PIPE
N 164.88' TO 1/2" PIPE
NE 15.20' TO NAIL
S 104.24' TO NAIL
SW 194.31' TO 5/8" REBAR

LOCATION MAP



OWNERS: HALL COUNTY DISTRICT 2
SUBDIVIDER: HALL COUNTY DISTRICT 2
SURVEYOR: OLSSON ASSOCIATES
ENGINEER: OLSSON ASSOCIATES
NUMBER OF LOTS: 1

DWC: F:\projects\014-2905\SRVY Starr\Final_Plat\0142905_FP Starr.dwg
DATE: Jan 15, 2015 3:19pm XREFS: 0142905_XTOPO Starr
USER: jramirez

<p>OLSSON ASSOCIATES</p>	201 East 2nd Street P.O. Box 1072 Grand Island, NE 68802-1072 TEL 308.384.8750 FAX 308.384.8752	PROJECT NO. 2014-2905 GIPS 2014 STARR SCHOOL SURVEY FB
	<p>SHEET 1 OF 2</p>	