



Hall County Regional Planning Commission

Wednesday, February 18, 2015
Regular Meeting

Item M2

A & E Second Subdivision

Staff Contact: Chad Nabity

January 27, 2015

Dear Members of the Board:

RE: Final Plat – A & E Second Subdivision – Final Plat.

For reasons of Section 19-923 Revised Statutes of Nebraska, as amended, there is herewith submitted a final plat of A & E Second Subdivision, located in Hall County, Nebraska.

This final plat proposes to create 1 Lot on a tract of land comprising a part of the West Half of the Southeast Quarter (W1/2 SE1/4) of Section Thirty One (31), Township Twelve (12) North, Range Ten (10) West of the 6th P.M., in Hall County, Nebraska, said tract containing 12.0307 acres.

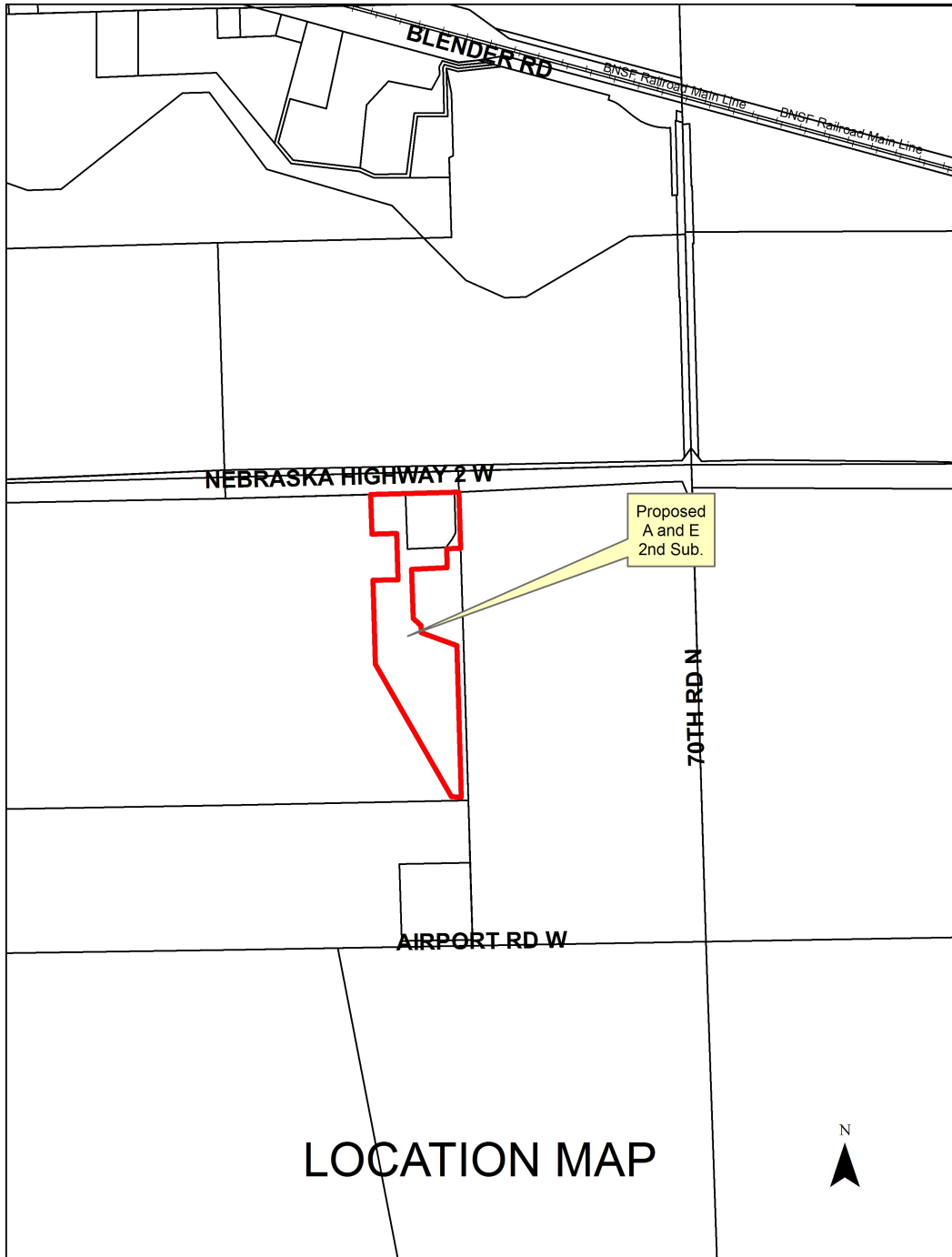
You are hereby notified that the Regional Planning Commission will consider this final plat at the next meeting that will be held at 6:00 p.m. on February 4, 2015 in the Council Chambers located in Grand Island's City Hall.

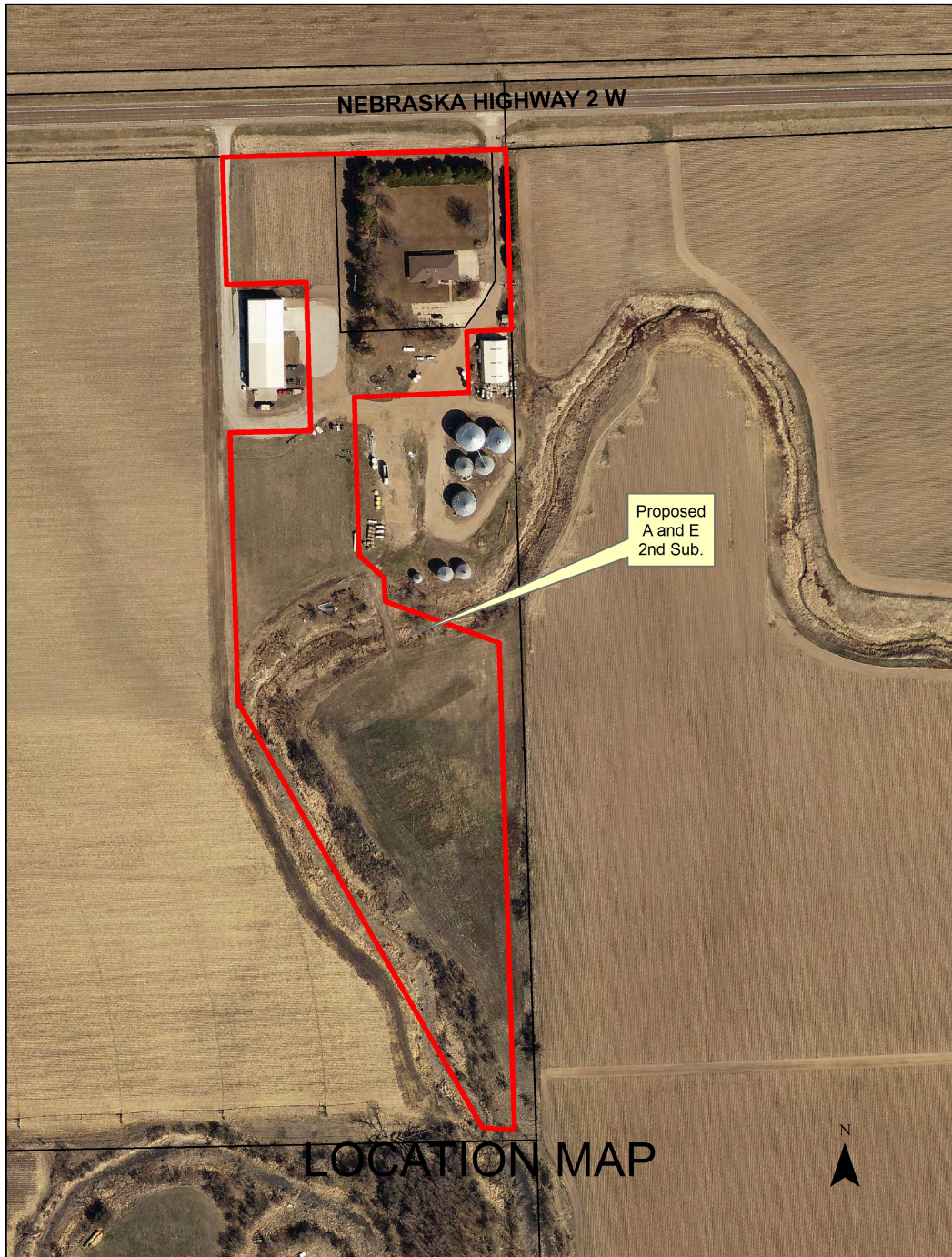
Sincerely,

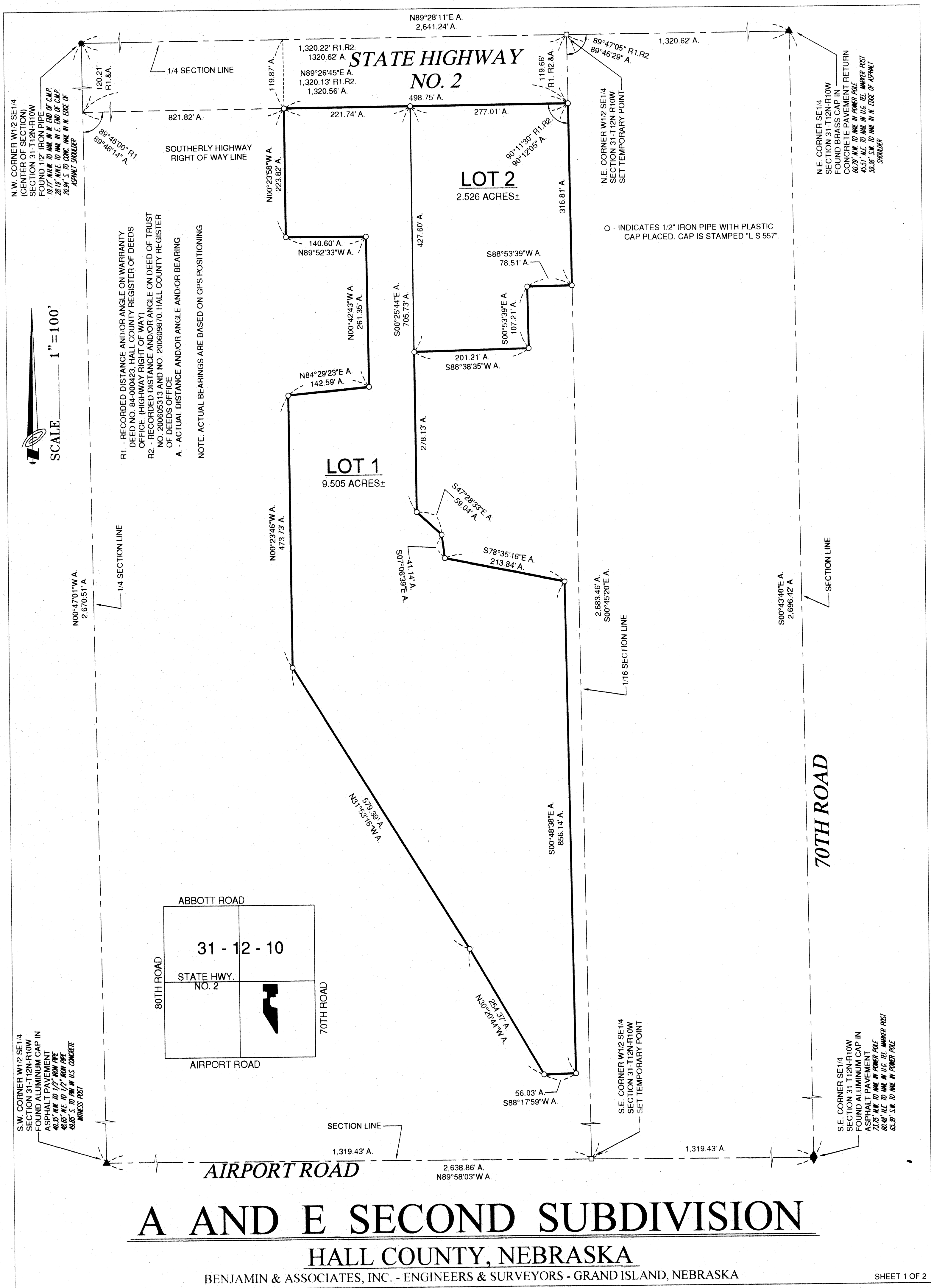
Chad Nabity, AICP
Planning Director

Cc: Hall County Clerk
Hall County Attorney
Hall County Public Works
Hall County Zoning Department
Manager of Postal Operations
Benjamin & Associates, LLC

This letter was sent to the following School Districts 1R, 2, 3, 19, 82, 83, 100, 126.







A AND E SECOND SUBDIVISION

HALL COUNTY, NEBRASKA

BENJAMIN & ASSOCIATES, INC. - ENGINEERS & SURVEYORS - GRAND ISLAND, NEBRASKA