



# City of Grand Island

Tuesday, November 25, 2014

Council Session

## Item G-9

**#2014-352 - Approving Acquisition of Public Utility Easement for Hall County Sanitary Sewer District 2 (SID 2) [Bockmann]**

*This item relates to the aforementioned Public Hearing item E-5.*

Staff Contact: John Collins, P.E. - Public Works Director

RESOLUTION 2014-352

WHEREAS, public utility easements are required by the City of Grand Island, from an affected property owner for the Hall County Sanitary Sewer District 2 (SID 2), described as follows:

Tract No	Owner	Legal	Total
7	K. Diane Bockmann	<p>A UTILITY EASEMENT LOCATED IN PART OF THE SOUTHEAST QUARTER (SE ¼) OF SECTION TWENTY-FOUR (24), TOWNSHIP TEN (10) NORTH, RANGE TEN (10) WEST OF THE 6<sup>TH</sup> P.M., HALL COUNTY, NEBRASKA, AND MORE PARTICULARLY DESCRIBED AS FOLLOWS:                      COMMENCING AT THE EAST QUARTER CORNER OF SAID SECTION TWENTY-FOUR (24); THENCE ON AN ASSUMED BEARING OF S00°46'38"E, ALONG THE EAST LINE OF SAID SOUTHEASTE QUARTER, A DISTANCE OF 81.59 FEET; THENCE S89°13'22"W A DISTANCE OF 489.95 FEET TO A POINT ON THE WEST RIGHT-OF-WAY LINE OF U.S. HIGHWAY 281 AND THE NORTHEAST CORNER OF A TRACT OF LAND AS RECORDED IN INSTRUMENT NO. 0200011169, HALL COUNTY REGISTER OF DEEDS, GRAND ISLAND, NEBRASKA, SAID POINT ALSO BEING THE POINT OF BEGINNING; THENCE S46°51'32"W ON THE RIGHT-OF-WAY LINE OF INTERSTATE 80 INTERCHANGE A DISTANCE OF 811.64 FEET TO A POINT OF CURVATURE; THENCE AROUND A CURVE IN A CLOCKWISE DIRECTION HAVING A DELTA ANGLE OF 11°35'01", A RADIUS OF 718.51 FEET, A LENGTH OF 145.26 FEET, A CHORD BEARING OF S72°34'49"W, ALONG THE NORTHWESTERLY RIGHT-OF-WAY OF SAID INTERCHAGE, A CHORD DISTANCE OF 145.02 FEET TO A POINT OF CURVATURE; THENCE AROUND A CURVE IN A CLOCKWISE DIRECTION HAVING A DELTA ANGLE OF 4°03'56", A RADIUS OF 4408.66 FEET, LENGTH OF 312.83 FEET, A CHORD BEARING OF S84°21'18"W AND CONTINUING ON SAID NORTHWESTERLY RIGHT-OF-WAY, A CHORD DISTANCE OF 312.77 FEET; THENCE N01°00'57"E A DISTANCE OF 25.08 FEET TO A POINT OF CURVATURE; THENCE AROUND A CURVE IN A COUNTER CLOCKWISE DIRECTION HAVING A DELTA ANGLE OF 4°03'56", A RADIUS OF 4383.66 FEET, A LENGTH OF 308.17, A CHORD BEARING OF N84°20'51"E, A CHORD DISTANCE OF 308.10 FEET TO A POINT OF CURVATURE; THENCE AROUND A CURVE IN A COUNTER CLOCKWISE DIRECTION HAVING A DELTA ANGLE OF 4°01'40", A RADIUS OF 693.51 FEET, A LENGTH OF 135.00, A CHORD BEARING OF N72°43'30"E, A CHORD DISTANCE OF 134.79 FEET; THENCE N46°51'29"E A DISTANCE OF 807.95 FEET; THENCE N50°17'14"E A DISTANCE OF 20.64 FEET; THENCE S01°13'16"E A DISTANCE OF 31.95 FEET TO THE POINT OF BEGINNING. SAID UTILITY EASEMENT CONTAINS A CALCULATED AREA OF 31,773 SQUARE FEET OR 0.73 ACRES MORE OR LESS.</p>	\$650.00
8	K. Diane Bockmann	<p>A UTILITY EASEMENT LCOATED IN PART OF THE SOUTHEAST QUARTER (SE ¼) OF SECTION TWENTY-FOUR (24), TOWNSHIP TEN (10) NORTH, RANGE TEN (10) WEST OF THE 6<sup>TH</sup> P.M. HALL COUNTY, NEBRASKA, AND MORE PARTICULARLY DESCRIBED AS FOLLOWS:                      COMMENCING AT THE NORTHWEST CORNER OF LOT 2, HIGHWAY MOTELS SUBDIVISION, SAID POINT BEING THE POINT OF BEGINNING; THENCE ON AN ASSUMED BEARING OF S00°09'34"W, ALONG THE WEST LINE OF SAID LOT 2, HIGHWAY MOTELS SUBDIVISION, A DISTANCE OF 738.40 FEET TO A SOUTHWESTERLY CORNER OF SAID LOT 2; THENCE S89°50'17"E, ALONG A SOUTHERLY LINE OF LOT 2, A DISTANCE OF 249.64 FEET; THENCE S00°07'55"W, ALONG A WESTERLY LINE OF SAID LOT 2, A DISTANCE OF 26.72 FEET; THENCE N89°26'44"W A DISTANCE OF 274.32 FEET; THENCE N00°06'35"E A DISTANCE OF 744.49 FEET; THENCE N71°15'37"W A DISTANCE OF 93.09 FEET; THENCE N73°08'05"W A DISTANCE OF 45.08 FEET; THENCE S88°11'26"W A DISTANCE OF 328.52 FEET; THENCE S89°19'26"W A DISTANCE OF 300.29 FEET; THENCE N01°00'57"E A DISTANCE OF 25.01 FEET TO A POINT ON THE SOUTH RIGHT-OF-WAY LINE OF INTERSTATE 80; THENCE N89°19'26"E, ALONG THE SOUTH RIGHT-OF-WAY LINE OF INTERSTATE 80 A DISTANCE OF 299.30 FEET; THENCE N88°05'18"E, CONTINUING ALONG THE SOUTH RIGHT-OF-WAY LINE OF INTERSTATE 80, A DISTANCE OF 334.92 FEET; THENCE S71°37'17"E, CONTINUING ALONG THE SOUTH RIGHT-OF-WAY LINE OF INTERSTATE 80, DISTANCE OF 158.92 FEET TO THE POINT OF BEGINNING. SAID UTILITY EASEMENT CONTAINS A CALCULATED AREA OF 44,873 SQUARE FEET OR 1.03 ACRES MORE OR LESS.</p>	\$650.00

Approved as to Form     \_\_\_\_\_  
 November 21, 2014        City Attorney

Tract No	Owner	Legal	Total
			<b>TOTAL</b> <b>\$1,300.00</b>

WHEREAS, agreements for the public utility easements have been reviewed and approved by the City Legal Department.

NOW, THEREFORE, BE IT RESOLVED BY THE MAYOR AND COUNCIL OF THE CITY OF GRAND ISLAND, NEBRASKA, that the City of Grand Island be, and hereby is, authorized to enter into the agreements for the public utility easements on the above described tracts of land, in the total amount of \$1,300.00.

BE IT FURTHER RESOLVED, that the Mayor is hereby authorized and directed to execute such agreements on behalf of the City of Grand Island.

- - -

Adopted by the City Council of the City of Grand Island, Nebraska, November 25, 2014.

\_\_\_\_\_  
Jay Vavricek, Mayor

Attest:

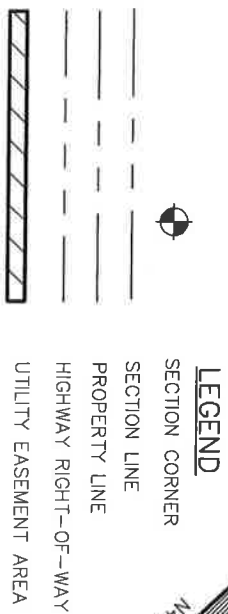
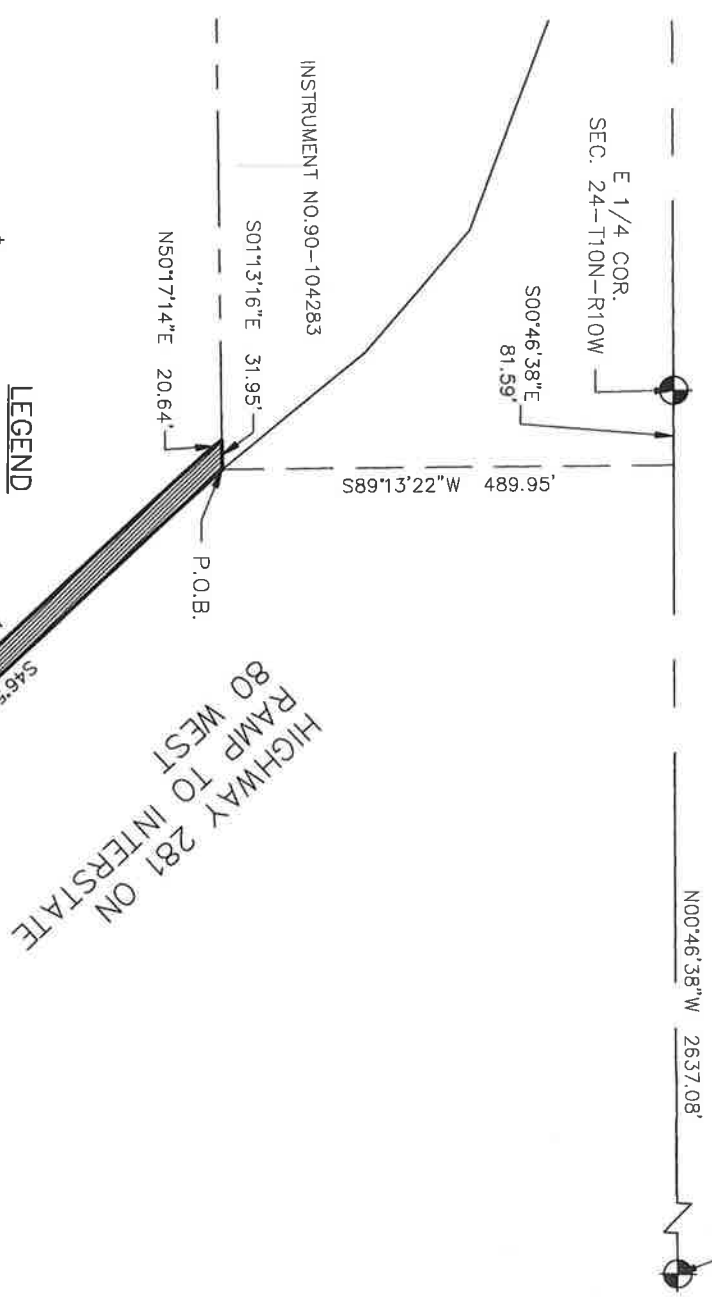
\_\_\_\_\_  
RaNae Edwards, City Clerk

# UTILITY EASEMENT

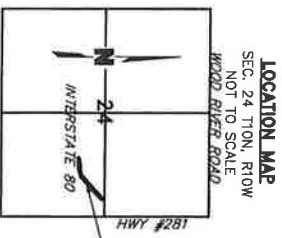
## HALL COUNTY, NEBRASKA



SE COR.  
SEC. 24-T10N-R10W  
N00°46'38"W 2637.08'



CURVE #	RADIUS	LENGTH	CHORD BEARING	CHORD	DELTA
C1	693.51'	135.00'	N72°43'30"E	134.79'	11°09'11"
C2	718.51'	145.26'	S72°34'49"W	145.02'	11°35'01"
C3	4408.66'	312.83'	S84°21'18"W	312.77'	4°03'56"
C4	4353.66'	308.17'	N84°20'51"E	308.10'	4°01'40"



### UTILITY EASEMENT DESCRIPTION

A UTILITY EASEMENT LOCATED IN PART OF THE SOUTHEAST QUARTER (SE1/2) OF SECTION TWENTY-FOUR (24), TOWNSHIP TEN (10) NORTH, RANGE TEN (10) WEST OF THE 6TH P.M., HALL COUNTY, NEBRASKA, AND MORE PARTICULARLY DESCRIBED AS FOLLOWS: COMMENCING AT THE EAST QUARTER CORNER OF SAID SECTION TWENTY-FOUR (24); THENCE ON AN ASSUMED BEARING OF S00°46'38"E, ALONG THE EAST LINE OF SAID SOUTHEAST QUARTER, A DISTANCE OF 81.59 FEET; THENCE S89°13'22"W A DISTANCE OF 489.95 FEET TO A POINT ON THE WEST RIGHT-OF-WAY LINE OF U.S. HIGHWAY 281 AND THE NORTHEAST CORNER OF A TRACT OF LAND AS RECORDED IN INSTRUMENT NO. 0200011169, HALL COUNTY REGISTER OF DEEDS, GRAND ISLAND, NEBRASKA, SAID POINT ALSO BEING THE POINT OF BEGINNING; THENCE S46°51'32"W, ON THE RIGHT-OF-WAY LINE OF INTERSTATE 80 INTERCHANGE, A DISTANCE OF 811.64 FEET TO A POINT OF CURVATURE; THENCE AROUND A CURVE IN A CLOCKWISE DIRECTION HAVING A DELTA ANGLE OF 11°35'01", A RADIUS OF 718.51 FEET, A LENGTH OF 145.26 FEET, A CHORD BEARING OF S72°34'49"W, ALONG THE NORTHWESTERLY RIGHT-OF-WAY OF SAID INTERCHANGE, A CHORD DISTANCE OF 145.02 FEET TO A POINT OF CURVATURE; THENCE AROUND A CURVE IN A CLOCKWISE DIRECTION HAVING A DELTA ANGLE OF 4°03'56", A RADIUS OF 4383.66 FEET, A LENGTH OF 312.83 FEET, A CHORD BEARING OF S84°21'18"W AND CONTINUING ON SAID NORTHWESTERLY RIGHT-OF-WAY, A CHORD DISTANCE OF 312.77 FEET; THENCE N01°00'57"E A DISTANCE OF 25.08 FEET TO A POINT OF CURVATURE; THENCE AROUND A CURVE IN A COUNTER CLOCKWISE DIRECTION HAVING A DELTA ANGLE OF 4°03'56", A RADIUS OF 4383.66 FEET, A LENGTH OF 308.17, A CHORD BEARING OF N84°20'51"E, A CHORD DISTANCE OF 308.10 FEET TO A POINT OF CURVATURE; THENCE AROUND A CURVE IN A COUNTER CLOCKWISE DIRECTION HAVING A DELTA ANGLE OF 4°01'40", A RADIUS OF 693.51 FEET, A LENGTH OF 135.00, A CHORD BEARING OF N72°43'30"E, A CHORD DISTANCE OF 134.79 FEET; THENCE N46°51'29"E A DISTANCE OF 31.95 FEET TO THE POINT OF BEGINNING. SAID UTILITY EASEMENT CONTAINS A CALCULATED AREA OF 31,773 SQUARE FEET OR 0.73 ACRES MORE OR LESS.

PROJECT NO: 2012-1867	<h2 style="margin: 0;">U.S. HIGHWAY 281</h2> <h3 style="margin: 0;">UTILITY EASEMENTS</h3>		
DRAWN BY: LWJ			201 East 2nd Street P.O. Box 1072 Grand Island, NE 68802-1072 TEL 308.384.8750 FAX 308.384.8752
DWG: F:\projects\012-1867\SVY0\Easements\012-1867_Sewer Easement_K. DIANE BOCKMANN (2).DWG DATE: Aug 11, 2014 10:44am XREFS: 121867_base 0121867_xbase_SID Sewer 0110941_FP Hwy Motels			

