



City of Grand Island

Tuesday, October 28, 2014

Council Session

Item G-14

#2014-329 - Approving Acquisition of Public Utility Easement in Rainbow Lake Sixth Subdivision (SSB Development, LLC)

This item relates to the aforementioned Public Hearing item E-5.

Staff Contact: John Collins, P.E. - Public Works Director

RESOLUTION 2014-329

WHEREAS, a public utility easement is required by the City of Grand Island, from SSB Development, LLC in Rainbow Lake Sixth Subdivision, Hall County, Nebraska and more particularly described as follows:

THE SOUTH 15 FEET OF THE NORTH 35 FEET OF LOTS 1 THRU 9, RAINBOW LAKE SIXTH SUBDIVISION IN THE CITY OF GRAND ISLAND, HALL COUNTY, NEBRASKA. SAID UTILITY EASEMENT CONTAINS A CALCULATED AREA OF 14,125 SQUARE FEET OR 0.32 ACRES MORE OR LESS.

WHEREAS, an Agreement for the public utility easement has been reviewed and approved by the City Legal Department.

NOW, THEREFORE, BE IT RESOLVED BY THE MAYOR AND COUNCIL OF THE CITY OF GRAND ISLAND, NEBRASKA, that the City of Grand Island be, and hereby is, authorized to enter into the Agreement for the public utility easement on the above described tracts of land.

BE IT FURTHER RESOLVED, that the Mayor is hereby authorized and directed to execute such agreement on behalf of the City of Grand Island.

- - -

Adopted by the City Council of the City of Grand Island, Nebraska, October 28, 2014.

Jay Vavricek, Mayor

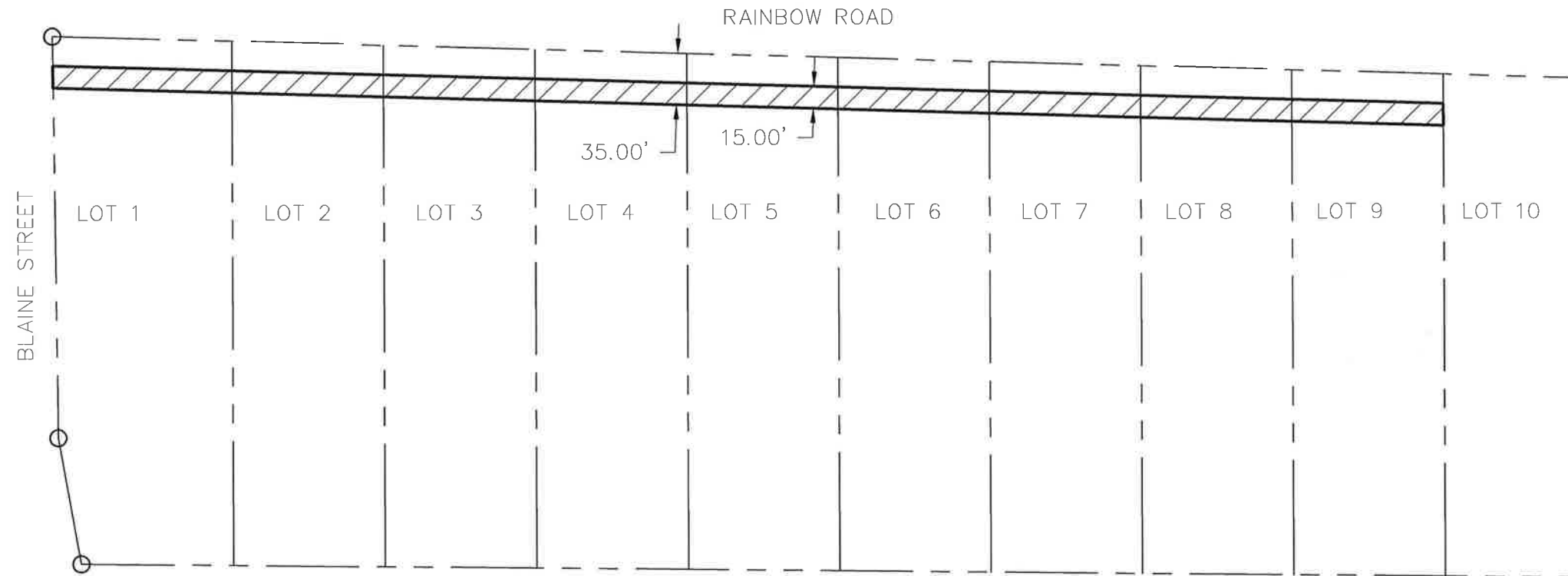
Attest:

RaNae Edwards, City Clerk

| | |
|---------------------|-----------------|
| Approved as to Form | ☐ _____ |
| October 24, 2014 | ☐ City Attorney |

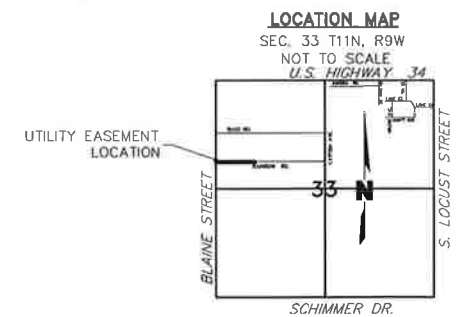
DWG: F:\projects\014-1038\SRV\Easements\0141038_15' Utility Easement.dwg USER: lwheeler
DATE: Sep 16, 2014 9:09am XREFS: 014-0580_XTOPO_STAKEOUT Rainbow Lake Sixth Sub Drainage Page 0141038_PBA

UTILITY EASEMENT
CITY OF GRAND ISLAND, HALL COUNTY, NEBRASKA



UTILITY EASEMENT DESCRIPTION

THE SOUTH 15 FEET OF THE NORTH 35 FEET OF LOTS 1 THRU 9, RAINBOW LAKE SIXTH SUBDIVISION IN THE CITY OF GRAND ISLAND, HALL COUNTY, NEBRASKA. SAID UTILITY EASEMENT CONTAINS A CALCULATED AREA OF 14,125 SQUARE FEET OR 0.32 ACRES MORE OR LESS.



LEGEND

- PROPERTY LINE
- UTILITY EASEMENT AREA
- FOUND CORNER

0' 50' 100' 200'
SCALE IN FEET

| | | | |
|-----------------------|-------------------------------|--|------------------|
| PROJECT NO: 2014-1038 | RAINBOW LAKE UTILITY EASEMENT |  201 East 2nd Street P.O. Box 1072 Grand Island, NE 68802-1072 TEL 308.384.8750 FAX 308.384.8752 | EXHIBIT 1 |
| DRAWN BY: LJW | | | |
| DATE: 09/15/2014 | | | |