



City of Grand Island

Tuesday, October 14, 2014

Council Session

Item E-2

**Public Hearing on Acquisition of Utility Easement located North of
U.S. Highway 30 and West of Engleman Road - West Park Plaza
Mobile Home Park**

Staff Contact: Tim Luchsinger, Utilities Director

Council Agenda Memo

From: Tim Luchsinger, Utilities Director

Meeting: October 14, 2014

Subject: Acquisition of Utility Easement – West Park Plaza Mobile Home Park

Item #'s: E-2 & G-5

Presenter(s): Timothy Luchsinger, Utilities Director

Background

Nebraska State Law requires that acquisition of property must be approved by City Council. The Utilities Department needs to acquire an easement relative to the property of West Park Plaza Mobile Home Park, LLC, located north of U.S. Highway 30, and west of Engleman Road, in the City of Grand Island, Hall County, in order to have access to install, upgrade, maintain, and repair power appurtenances, including lines and transformers.

Discussion

The Utilities Department makes every effort to build redundancy into its distribution system by constructing new lines to existing radial fed transformers. This allows the transformer to be energized from a different direction while old cable is replaced. This easement will create a path for a new cable between a main line and an existing transformer.

Alternatives

It appears that the Council has the following alternatives concerning the issue at hand. The Council may:

1. Make a motion to approve
2. Refer the issue to a Committee
3. Postpone the issue to future date
4. Take no action on the issue

Recommendation

City Administration recommends that the Council approve the resolution for the acquisition of the easement for one dollar (\$1.00).

Sample Motion

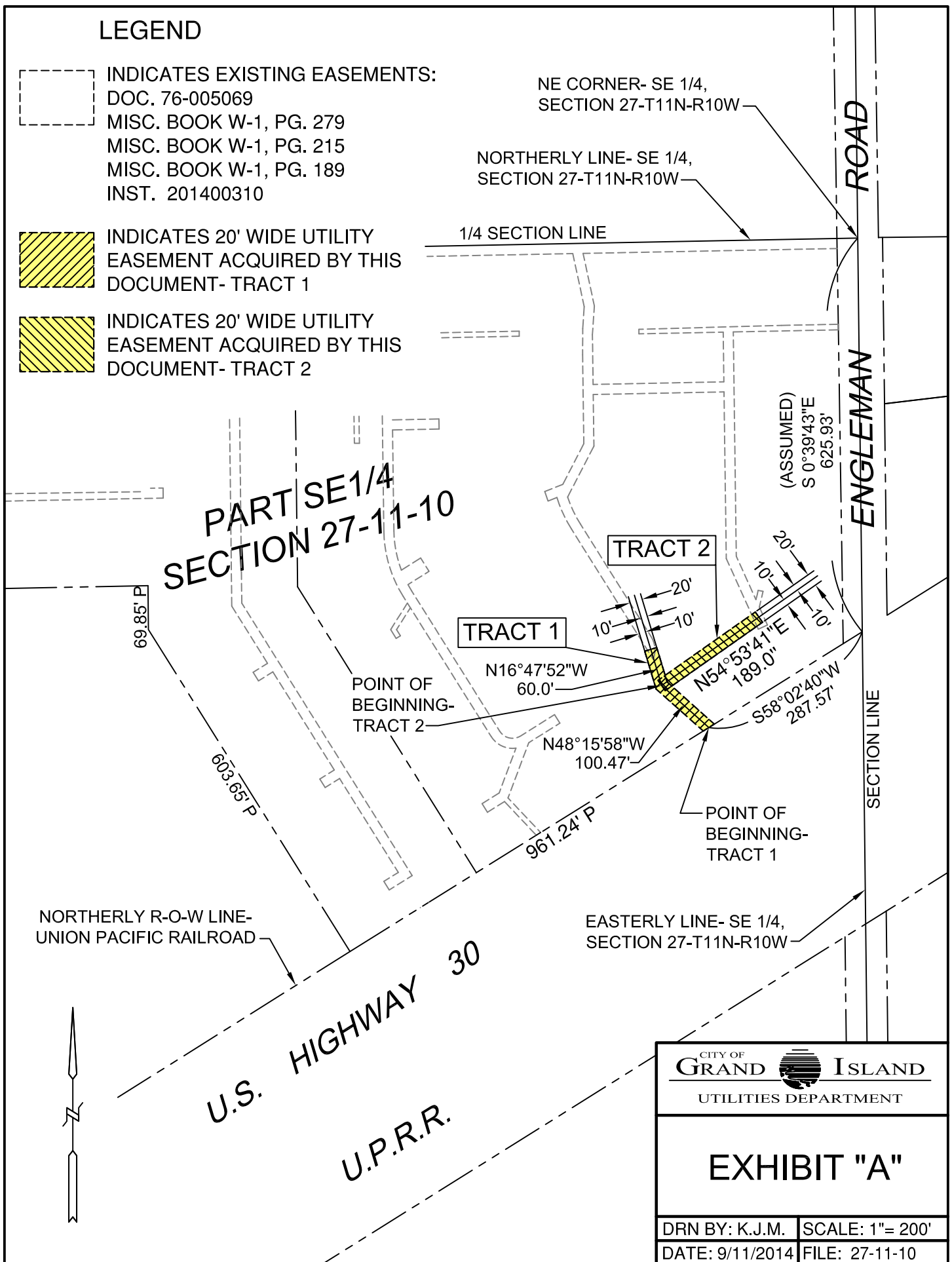
Move to approve acquisition of the Utility Easement.

LEGEND

INDICATES EXISTING EASEMENTS:
 DOC. 76-005069
 MISC. BOOK W-1, PG. 279
 MISC. BOOK W-1, PG. 215
 MISC. BOOK W-1, PG. 189
 INST. 201400310

INDICATES 20' WIDE UTILITY EASEMENT ACQUIRED BY THIS DOCUMENT- TRACT 1

INDICATES 20' WIDE UTILITY EASEMENT ACQUIRED BY THIS DOCUMENT- TRACT 2



 <p>CITY OF GRAND ISLAND UTILITIES DEPARTMENT</p>	
<p>EXHIBIT "A"</p>	
DRN BY: K.J.M.	SCALE: 1"= 200'
DATE: 9/11/2014	FILE: 27-11-10