



City of Grand Island

Tuesday, September 23, 2014

Council Session

Item I-3

#2014-308 - Consideration of Assessments for Sanitary Sewer District 527T; Platte Valley Industrial Park-East

This item relates to the aforementioned Board of Equalization item D-2.

Staff Contact: John Collins, P.E. - Public Works Director

RESOLUTION NO. 2014-308

BE IT RESOLVED BY THE MAYOR AND COUNCIL OF THE CITY OF GRAND ISLAND, NEBRASKA, that the special benefits as determined by Resolution No. 2014-BE-7 shall not be levied as special assessments but shall be certified by this resolution to the Register of Deeds, Hall County, Nebraska, pursuant to Section 16-6, 103 R.R.S. 1943. A connection fee in the amount of the benefit identified below accruing to each property in the district shall be paid to the City of Grand Island at the time such property becomes connected to the sanitary sewer main. No property benefited as determined by this resolution shall be connected to the sanitary sewer main until the connection fee is paid. The connection fees collected shall be paid into the fund from which construction costs were made to replenish such fund for the construction costs.

According to the front foot and area of the respective lots, tracts, and real estate within such Sanitary Sewer Main District No. 527T, such benefits are the sums set opposite the several descriptions as follows:

<u>Name</u>	<u>Description</u>	<u>Assessment</u>
<u>Sanitary Sewer District No. 527T</u>		
Blattner Family Trust	Part SW 1/4, SE 1/4, Section 5, T-10-N, R-9-W Platte Valley Industrial Park Third Subdivision	\$ 47,526.22
Grand Island Area Economic Development Corporation	Part SE 1/4, SE 1/4, Section 5, T-10-N, R-9-W Platte Valley Industrial Park Third Subdivision	\$ 53,934.15
Grand Island Area Economic Development Corporation	Part N 1/2, SE 1/4, Section 5, T-10-N, R-9-W Platte Valley Industrial Park Third Subdivision	\$ 53,092.65
Grand Island Area Economic Development Corporation	Part W 1/2, NE 1/4, Section 5, T-10-N, R-9-W Platte Valley Industrial Park Third Subdivision	\$ 53,809.19
Grand Island Area Economic Development Corporation	Part E 1/2, NE 1/4, Section 5, T-10-N, R-9-W W 53-1/3 Platte Valley Industrial Park Third Subdivision	\$ 35,330.23

Approved as to Form ☐ _____
September 19, 2014 ☐ City Attorney

Grand Island Area Economic
Development Corporation

Part E 1/2, NE 1/4, Section 5, T-10-N, R-9-W
E 26-2/3
Platte Valley Industrial Park Third Subdivision

\$ 17,776.35

TOTAL

\$261,468.80

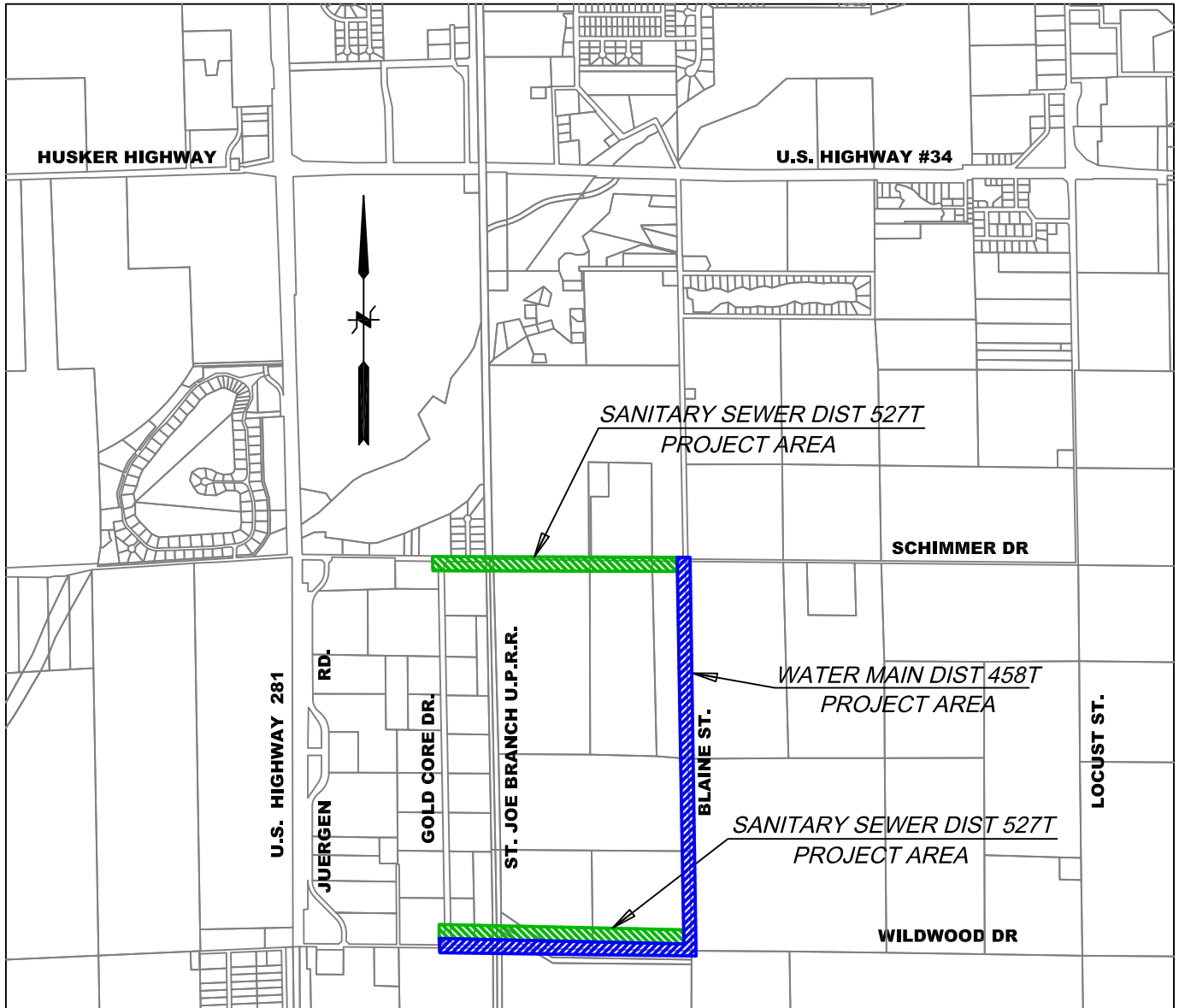
Adopted by the City Council of the City of Grand Island, Nebraska, September 23, 2014.

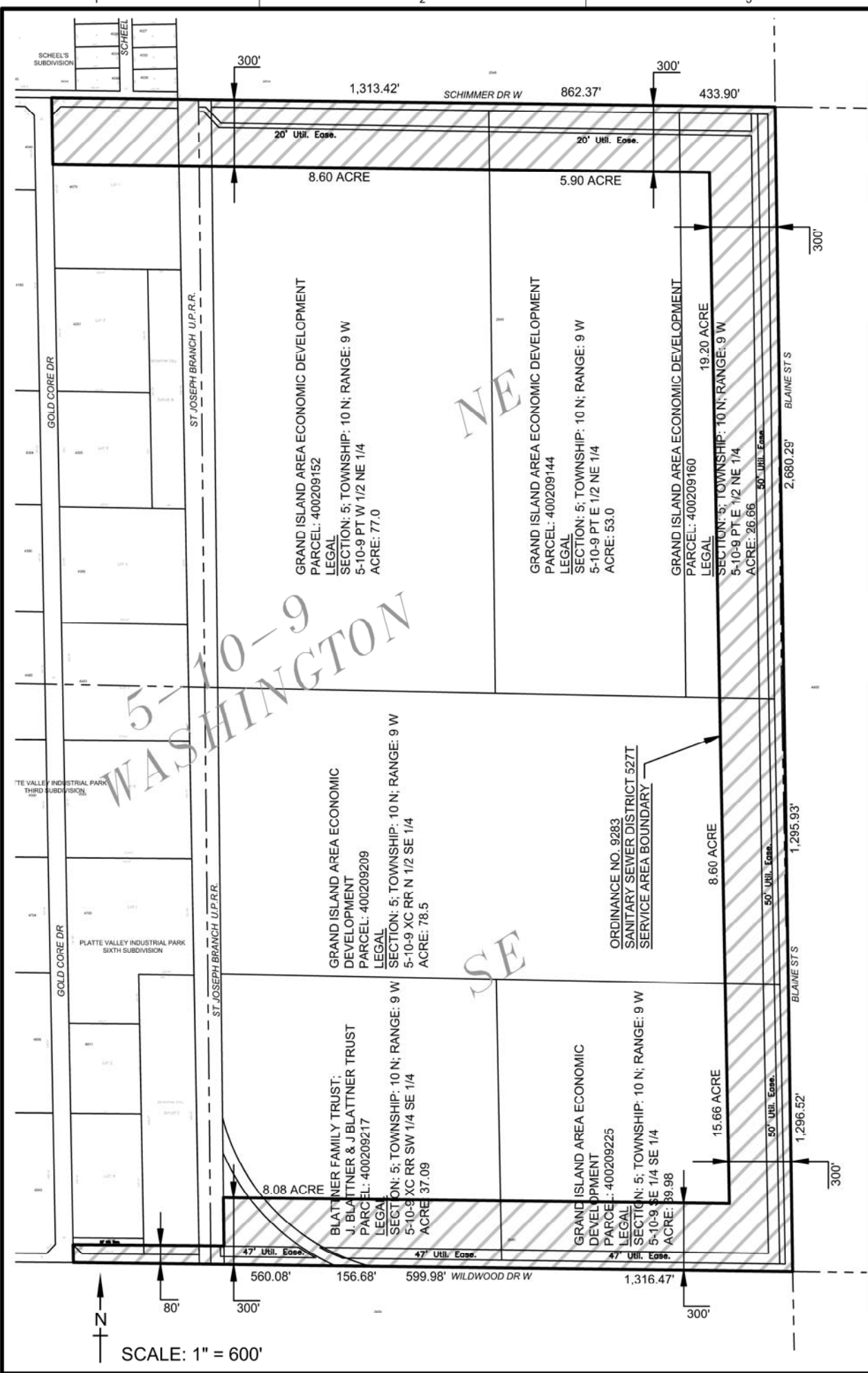
Jay Vavricek, Mayor

Attest:

RaNae Edwards, City Clerk

LOCATION MAP





N
 SCALE: 1" = 600'

NO.		DESCRIPTION	
NO.		REVISION	
DSGN		DR	CHK
DATE		APVD	
NO.		APVR N	
NO.		BY APVD	

CIVIL	
EXHIBIT "A" SANITARY SEWER ASSESSMENT	
PLATTE VALLEY INDUSTRIAL PARK - EAST	
CITY OF GRAND ISLAND	
PUBLIC WORKS DIVISION	
100 EAST 1ST STREET, GRAND ISLAND, NE 68801	

VERIFY SCALE	
BAR IS ONE INCH ON ORIGINAL DRAWING.	
DATE	26 DECEMBER 2012
PROJ	26122012
DWG	C-1
SHEET	SHEET - 1

FILENAME: PVIP BASE MAP_SANITARY SEWER ASSESSMENT PLOT DATE: 26 DEC 12

