



# **City of Grand Island**

**Tuesday, September 9, 2014**

**Council Session**

## **Item E-3**

**Public Hearing on Acquisition of Utility Easement - 3133 W. U.S.  
Highway 34 - Museum Board of Hall County**

**Staff Contact: Tim Luchsinger, Utilities Director**

# Council Agenda Memo

**From:** Tim Luchsinger, Utilities Director

**Meeting:** September 9, 2014

**Subject:** Acquisition of Utility Easement – 3133 West U.S. Highway 34  
- Stuhr Museum

**Item #'s:** E-3 & G-3

**Presenter(s):** Timothy Luchsinger, Utilities Director

## Background

Nebraska State Law requires that acquisition of property must be approved by City Council. The Utilities Department needs to acquire an easement relative to the property of the Museum Board of Hall County, Nebraska, located at 3133 West U.S. Highway 34, an addition to the City of Grand Island, Hall County, in order to have access to install, upgrade, maintain, and repair power appurtenances, including lines and transformers.

## Discussion

Tract 1 of the easement will provide for a new transformer for the power supply to the main building on the island. Tract 2 of the easement will allow a back-up power supply to the entire campus.

## Alternatives

It appears that the Council has the following alternatives concerning the issue at hand. The Council may:

1. Make a motion to approve
2. Refer the issue to a Committee
3. Postpone the issue to future date
4. Take no action on the issue

## Recommendation

City Administration recommends that the Council approve the resolution for the acquisition of the easement for one dollar (\$1.00).

## Sample Motion

Move to approve acquisition of the Utility Easement.

# U.S. HWY 34

NW CORNER- NW 1/4 SEC 32, T-11-N, R-9-W

NORTH LINE- NW 1/4 SEC 32, T-11-N, R-9-W

NORTHERLY LINE- STUHR MUSEUM SUB.

CENTERLINE OF EXISTING 16' WIDE EASEMENT- M ISC. BOOK 28, PG. 387

LOT 2

NE CORNER- NW 1/4 SEC 32, T-11-N, R-9-W

# STUHR MUSEUM

LOT 1

TRACT 1



TRACT 2

POINT OF BEGINNING- TRACT 1

POINT OF BEGINNING- TRACT 2

# SUBDIVISION

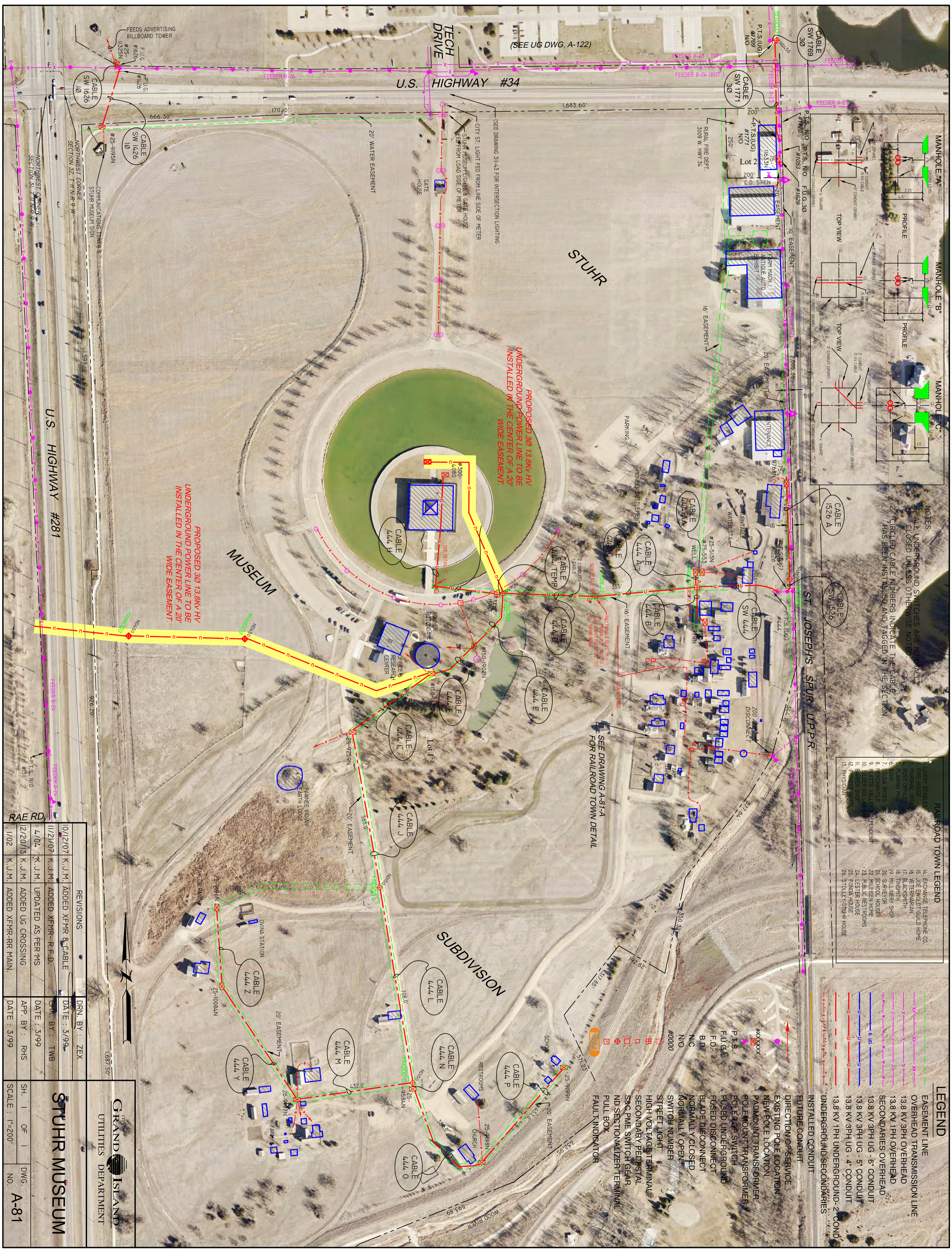
## LEGEND

-  INDICATES 20' WIDE UTILITY EASEMENT TRACT 1
-  INDICATES 20' WIDE UTILITY EASEMENT TRACT 2

CITY OF  
**GRAND ISLAND**  
UTILITIES DEPARTMENT

EXHIBIT "A"

DRN BY: K.J.M.	SCALE: 1"= 400'
DATE: 8/18/2014	STUHR MUSEUM



NOTES:  
 1. ALL UNDERGROUND SWITCHES ARE NORMALLY CLOSED UNLESS OTHERWISE NOTED.  
 2. CIRCLED CABLE NUMBERS INDICATE THE CABLE HAS BEEN INSTALLED AND TAGGED IN THE SECTION.

**RAILROAD TOWN LEGEND**

14. EXCHANGE TELEPHONE CO.
15. JOE ENDRIGT GUILD HOME
16. VETERANARIAN
17. BLACKSMITH
18. TINSMITH
19. MILLWREN SHOP
20. SERRVOR
21. SCHOOL HOUSE
22. PUBLIC RESTROOMS
23. LESTER HOUSE
24. FORD HOUSE
25. STOLEY-STUHR HOUSE
26. PHYSICIAN

**LEGEND**

--- EASEMENT LINE
--- OVERHEAD TRANSMISSION LINE
--- 13.8 KV 3PH OVERHEAD
--- 13.8 KV 1PH OVERHEAD
--- SECONDARIES OVERHEAD
--- 13.8 KV 3PH UG - 6" CONDUIT
--- 13.8 KV 3PH UG - 5" CONDUIT
--- 13.8 KV 3PH UG - 4" CONDUIT
--- 13.8 KV 1PH UNDERGROUND-2" CONDUIT
--- UNDERGROUND SECONDARIES
--- INSTALLED CONDUIT
--- FUTURE CONDUIT
--- DIRECTION OF SERVICE
--- EXISTING POLE LOCATION
--- NEW POLE LOCATION
--- PADMOUNT TRANSFORMER
--- POLE MOUNT TRANSFORMER
--- POLE TOP SWITCH
--- FUSED UNDERGROUND
--- FUSED DISCONNECT
--- BLADE DISCONNECT
--- NORMAL Y CLOSED
--- KOGMALL Y OPEN
--- SWITCH NUMBER
--- STREET LIGHT
--- HIGH VOLTAGE TERMINAL
--- SECONDARY PEDestal
--- SMC PME SWITCH GEAR
--- ND SECTIONALIZER TERMINAL
--- PULL BOX
--- FAULT INDICATOR

PROPOSED 30 13.8KV HV UNDERGROUND POWER LINE TO BE INSTALLED IN THE CENTER OF A 20' WIDE EASEMENT.

PROPOSED 30 13.8KV HV UNDERGROUND POWER LINE TO BE INSTALLED IN THE CENTER OF A 20' WIDE EASEMENT.

**REVISIONS**

10/12/07	K.J.M.	ADDED XFMR & CABLE	DRN. BY: ZEX
11/21/07	K.J.M.	ADDED XFMR-R.F.D.	DATE: 3/99
4/10/11	K.J.M.	UPDATED AS PER MS	CHK. BY: TWB
12/20/13	K.J.M.	ADDED UG CROSSING	DATE: 3/99
1/10/14	K.J.M.	ADDED XFMR-RR MAIN.	APP. BY: RHS
			DATE: 3/99

**STUHR MUSEUM**

GRAND ISLAND UTILITIES DEPARTMENT

SCALE: 1"=200'

DWG. NO. A-81