



City of Grand Island

Tuesday, August 12, 2014

Council Session

Item G-14

**#2014-212 - Approving Acquisition of Drainage Easement for
Westgate Drainage District No. 2013-D-4 (MHEC Land Trust, VI)**

This item relates to the aforementioned Public Hearing item E-9.

Staff Contact: John Collins, P.E. - Public Works Director

RESOLUTION 2014-212

WHEREAS, a drainage easement is required by the City of Grand Island, from MHEC Land Trust, VI, within Westgate Sixth Subdivision, City of Grand Island, Hall County, Nebraska and more particularly described as follows:

THE SOUTH 20' OF LOT 1, WESTGATE SIXTH SUBDIVISION. SAID DRAINAGE EASEMENT CONTAINS A CALCULATED AREA OF 600 SQUARE FEET OR 0.014 ACRES MORE OR LESS.

WHEREAS, an Agreement for the drainage easement has been reviewed and approved by the City Legal Department.

NOW, THEREFORE, BE IT RESOLVED BY THE MAYOR AND COUNCIL OF THE CITY OF GRAND ISLAND, NEBRASKA, that the City of Grand Island be, and hereby is, authorized to enter into the Agreement for the drainage easement on the above described tract of land.

BE IT FURTHER RESOLVED, that the Mayor is hereby authorized and directed to execute such agreement on behalf of the City of Grand Island.

- - -

Adopted by the City Council of the City of Grand Island, Nebraska, August 12, 2014.

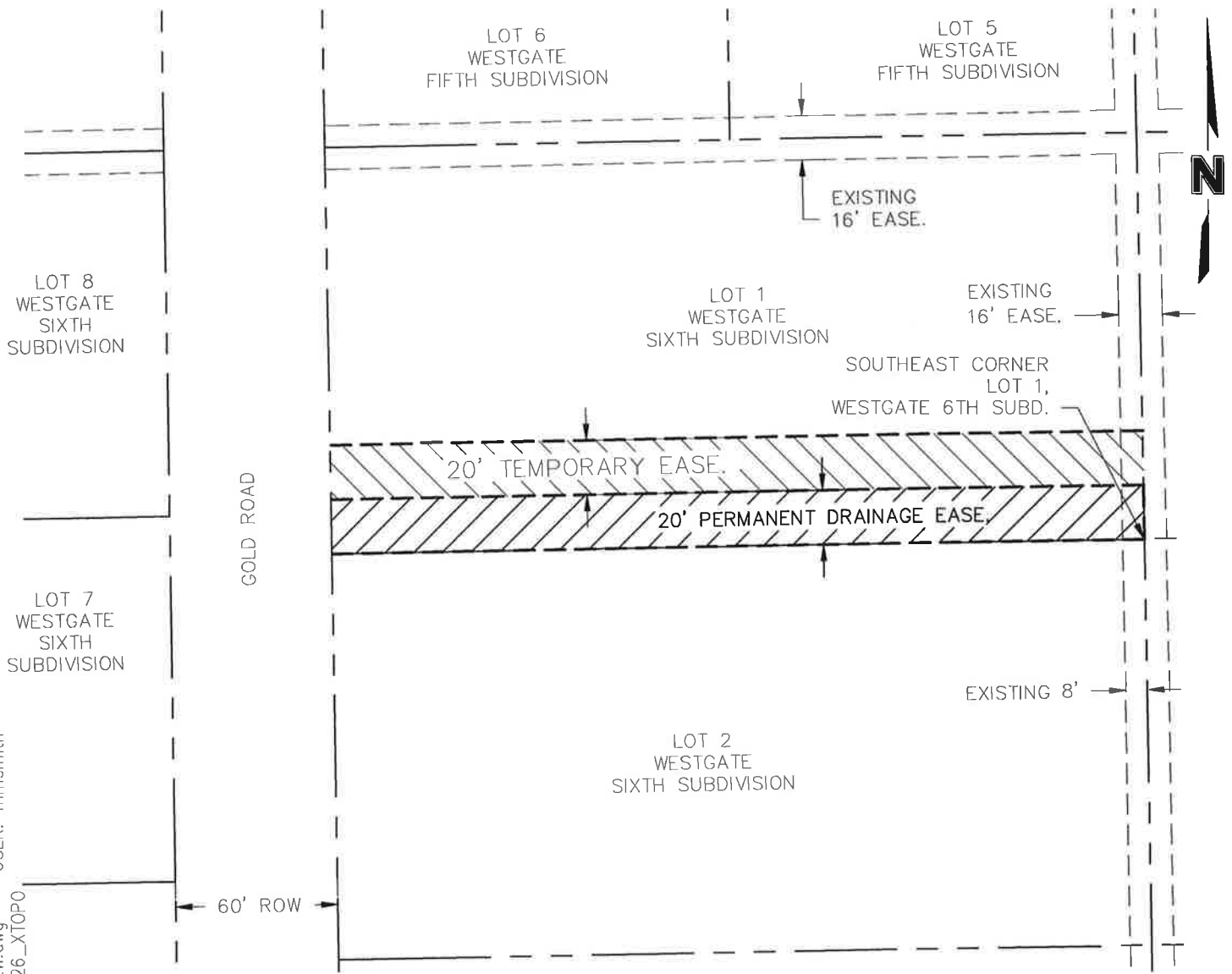
Jay Vavricek, Mayor

Attest:

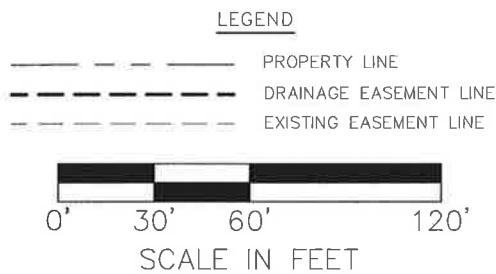
RaNae Edwards, City Clerk

Approved as to Form	▣ _____
August 11, 2014	▣ City Attorney

DWG: F:\projects\014-0826\BIN\MasterXrefs\0140826_EASMT NEW.dwg
 DATE: Jul 01, 2014 4:42pm
 USER: mmsmith
 XREFS: 0140826_ROW 0140826_XTOPO



LOCATION MAP
NOT TO SCALE



PERMANENT DRAINAGE EASEMENT

A 20' PERMANENT DRAINAGE EASEMENT LOCATED IN PART OF LOT 1, WESTGATE SIXTH SUBDIVISION IN THE CITY OF GRAND ISLAND, HALL COUNTY, NEBRASKA, AND MORE PARTICULARLY DESCRIBED AS FOLLOWS:

THE SOUTH 20 FEET OF LOT 1, WESTGATE SIXTH SUBDIVISION. SAID DRAINAGE EASEMENT CONTAINS A CALCULATED AREA OF 600 SQUARE FEET OR 0.014 ACRES MORE OR LESS.

PROJECT NO: 2014-0826
 DRAWN BY: MMS
 DATE: 06.20.2014

PERMANENT DRAINAGE EASEMENT

MOLSSON
ASSOCIATES®

201 East 2nd Street
 P.O. Box 1072
 Grand Island, NE 68802-1072
 TEL 308.384.8750
 FAX 308.384.8752

EXHIBIT
A