



# City of Grand Island

Tuesday, June 24, 2014

Council Session

## Item E-4

**Public Hearing on Acquisition of Utility Easement - 2807 & 2825  
N. Engleman Road - Jack Voss**

Staff Contact: Tim Luchsinger, Utilities Director

# **Council Agenda Memo**

**From:** Tim Luchsinger, Utilities Director

**Meeting:** June 24, 2014

**Subject:** Acquisition of Utility Easement – Along the East/West Property Line between 2807 & 2825 N. Engleman Road – Jack Voss

**Item #'s:** E-4 & G-9

**Presenter(s):** Timothy Luchsinger, Utilities Director

## **Background**

Nebraska State Law requires that acquisition of property must be approved by City Council. The Utilities Department needs to acquire an easement relative to the property of Jack Voss, located along the east-west property line between 2807 & 2825 N. Engleman Road, in the City of Grand Island, Hall County, in order to have access to install, upgrade, maintain, and repair power appurtenances, including lines and transformers.

## **Discussion**

An existing overhead line running North/South across the center of Lot Seven (7) is planned to be removed to allow placement of the electric supply along the property line. The easement will be used to place a new underground power line and pad-mounted transformer to serve both 2807 and 2825 North Engleman Road.

## **Alternatives**

It appears that the Council has the following alternatives concerning the issue at hand. The Council may:

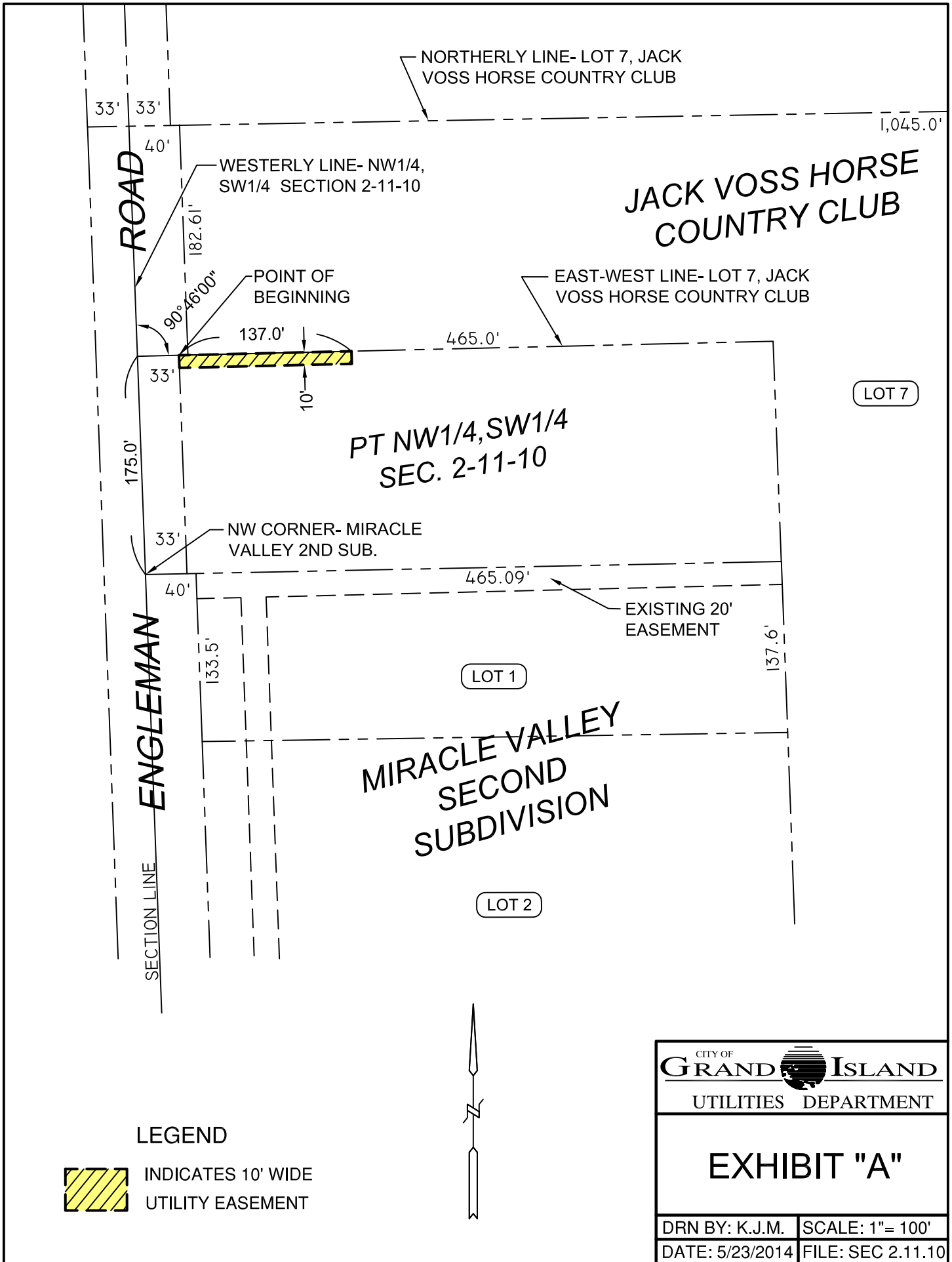
1. Make a motion to approve
2. Refer the issue to a Committee
3. Postpone the issue to future date
4. Take no action on the issue

## **Recommendation**


City Administration recommends that the Council approve the resolution for the acquisition of the easement for one dollar (\$1.00).

## **Sample Motion**

Move to approve acquisition of the Utility Easement.



**LEGEND**

 INDICATES 10' WIDE UTILITY EASEMENT

CITY OF <b>GRAND ISLAND</b>	
UTILITIES DEPARTMENT	
<b>EXHIBIT "A"</b>	
DRN BY: K.J.M.	SCALE: 1"= 100'
DATE: 5/23/2014	FILE: SEC 2.11.10