



City of Grand Island

Tuesday, June 10, 2014

Council Session

Item E-7

**Public Hearing on Acquisition of Utility Easement for Sanitary
Sewer Tap District No. 530T – Sanitary Sewer Extension to
Interstate 80 (Kirby Kay Smith)**

Staff Contact: John Collins, P.E. - Public Works Director

Council Agenda Memo

From: Terry Brown PE, Assistant Public Works Director

Meeting: June 10, 2014

Subject: Public Hearing on Acquisition of Utility Easement for Sanitary Sewer Tap District No. 530T – Sanitary Sewer Extension to Interstate 80 (Kirby Kay Smith)

Item #'s: E-7 & G-10

Presenter(s): John Collins PE, Public Works Director

Background

Sanitary Sewer Tap District No. 530T; Sanitary Sewer Extension to Interstate 80 was created by City Council through Ordinance Resolution No. 9348 at the December 6, 2011 meeting.

A public utility easement is needed to accommodate the extension of sanitary sewer to Interstate 80. The public utility easement will allow for the construction, operation, maintenance, extension, repair, replacement, and removal of sanitary sewer within the easement.

Such sanitary sewer district was created by City Council through Ordinance No. 9348 at the December 6, 2011 meeting.

Discussion

The purchase price of the necessary public utility easement is as follows, and has been agreed upon between the City and the property owner.

<i>Property Owner</i>	<i>Legal Description</i>	<i>Amount</i>
Kirby Kay Smith	A TRACT OF LAND LOCATED IN THE NORTH HALF (N ½) OF THE NORTHEAST QUARTER (NE ¼) OF SECTION 13, TOWNSHIP 10 NORTH, RANGE 10 WEST OF THE SIXTH P.M., HALL COUNTY, NEBRASKA, BEING MORE PARTICULARLY DESCRIBED AS FOLLOWS: COMMENCING AT THE SOUTHEAST CORNER OF SAID NORTH HALF (N ½) OF THE NORTHEAST QUARTER (NE ¼); THENCE S87°07'38"W (ASSUMED BEARING) ALONG THE SOUTH LINE OF SAID NORTH HALF (N ½) OF THE NORTHEAST QUARTER (NE ¼) A DISTANCE OF 177.50 FEET TO THE WEST RIGHT-OF-WAY LINE OF U.S. HIGHWAY #281 AND	\$4,480.00

	<p>THE ACTUAL POINT OF BEGINNING; THENCE CONTINUING S87°07'38"W ALONG SAID SOUTH LINE OF THE NORTH HALF (N ½) OF THE NORTHEAST QUARTER (NE ¼) A DISTANCE OF 30.01 FEET; THENCE N01°12'19"W PARALLEL WITH AND 30.00 FEET WEST OF THE WEST RIGHT-OF-WAY LINE OF U.S. HIGHWAY #281 A DISTANCE OF 954.87 FEET; THENCE N11°02'43"W A DISTANCE OF 380.21 FEET TO THE NORTH LINE OF SAID NORTH HALF (N ½) OF THE NORTHEAST QUARTER (NE ¼); THENCE N86°54'01"E ALONG SAID NORTH LINE OF THE NORTH HALF (N ½) OF THE NORTHEAST QUARTER (NE ¼) A DISTANCE OF 30.03 FEET; THENCE S11°02'43"E A DISTANCE OF 380.13 FEET TO THE WEST RIGHT-OF-WAY LINE OF U.S. HIGHWAY #281; THENCE S01°12'19"E ALONG SAID WEST RIGHT-OF-WAY LINE OF U.S. HIGHWAY #281 A DISTANCE OF 955.06 FEET TO THE POINT OF BEGINNING. SAID TRACT CONTAINS A CALCULATED AREA OF 39,955 SQUARE FEET OR 0.917 ACRES MORE OR LESS.</p>	
--	---------------------------------------------------------------------------------------------------------------------------------------------------------------------------------------------------------------------------------------------------------------------------------------------------------------------------------------------------------------------------------------------------------------------------------------------------------------------------------------------------------------------------------------------------------------------------------------------------------------------------------------------------------------------------------------------------------------------------------------------------------------------------------------------------------------------------------------------------------------------------------------------	--

Alternatives

It appears that the Council has the following alternatives concerning the issue at hand. The Council may:

1. Move to approve
2. Refer the issue to a Committee
3. Postpone the issue to future date
4. Take no action on the issue

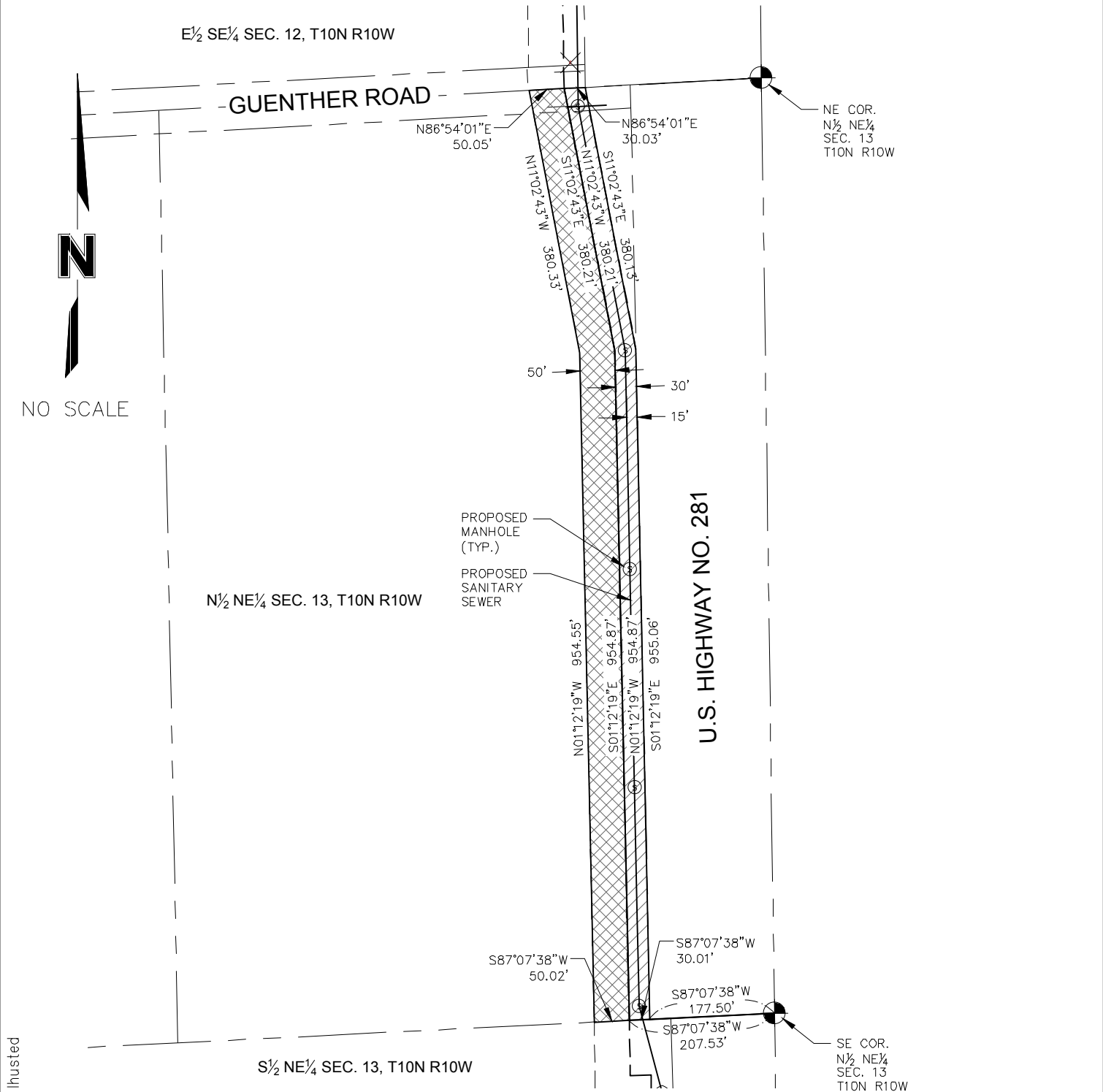
Recommendation

City Administration recommends that the Council approve acquisition of the necessary Public Utility Easement.

Sample Motion

Move to approve the acquisition of the necessary Public Utility Easement.

KIRBY KAY SMITH



LEGAL DESCRIPTION OF PERMANENT EASEMENT

A TRACT OF LAND LOCATED IN THE NORTH HALF (N 1/2) OF THE NORTHEAST QUARTER (NE 1/4) OF SECTION 13, TOWNSHIP 10 NORTH, RANGE 10 WEST OF THE SIXTH P.M., HALL COUNTY, NEBRASKA, BEING MORE PARTICULARLY DESCRIBED AS FOLLOWS:

COMMENCING AT THE SOUTHEAST CORNER OF SAID NORTH HALF (N 1/2) OF THE NORTHEAST QUARTER (NE 1/4); THENCE S 87°07'38"W (ASSUMED BEARING) ALONG THE SOUTH LINE OF SAID NORTH HALF (N 1/2) OF THE NORTHEAST QUARTER (NE 1/4) A DISTANCE OF 177.50 FEET TO THE WEST RIGHT-OF-WAY LINE OF U.S. HIGHWAY #281 AND THE ACTUAL POINT OF BEGINNING; THENCE CONTINUING S 87°07'38"W ALONG SAID SOUTH LINE OF THE NORTH HALF (N 1/2) OF THE NORTHEAST QUARTER (NE 1/4) A DISTANCE OF 30.01 FEET; THENCE N 01°12'19"W PARALLEL WITH AND 30.00 FEET WEST OF THE WEST RIGHT-OF-WAY LINE OF U.S. HIGHWAY #281 A DISTANCE OF 954.87 FEET; THENCE N 11°02'43"W A DISTANCE OF 380.21 FEET TO THE NORTH LINE OF SAID NORTH HALF (N 1/2) OF THE NORTHEAST QUARTER (NE 1/4); THENCE N 86°54'01"E ALONG SAID NORTH LINE OF THE NORTH HALF (N 1/2) OF THE NORTHEAST QUARTER (NE 1/4) A DISTANCE OF 30.03 FEET; THENCE S 11°02'43"E A DISTANCE OF 380.13 FEET TO THE WEST RIGHT-OF-WAY LINE OF U.S. HIGHWAY #281; THENCE S 01°12'19"E ALONG SAID WEST RIGHT-OF-WAY LINE OF U.S. HIGHWAY #281 A DISTANCE OF 955.06 FEET TO THE POINT OF BEGINNING. SAID TRACT CONTAINS A CALCULATED AREA OF 39,955 SQUARE FEET OR 0.917 ACRES MORE OR LESS.

LEGAL DESCRIPTION OF TEMPORARY CONSTRUCTION EASEMENT

A TRACT OF LAND LOCATED IN THE NORTH HALF (N 1/2) OF THE NORTHEAST QUARTER (NE 1/4) OF SECTION 13, TOWNSHIP 10 NORTH, RANGE 10 WEST OF THE SIXTH P.M., HALL COUNTY, NEBRASKA, BEING MORE PARTICULARLY DESCRIBED AS FOLLOWS:

COMMENCING AT THE SOUTHEAST CORNER OF SAID NORTH HALF (N 1/2) OF THE NORTHEAST QUARTER (NE 1/4); THENCE S 87°07'38"W (ASSUMED BEARING) ALONG THE SOUTH LINE OF SAID NORTH HALF (N 1/2) OF THE NORTHEAST QUARTER (NE 1/4) A DISTANCE OF 207.53 FEET TO THE ACTUAL POINT OF BEGINNING; THENCE CONTINUING S 87°07'38"W ALONG SAID SOUTH LINE OF THE NORTH HALF (N 1/2) OF THE NORTHEAST QUARTER (NE 1/4) A DISTANCE OF 50.02 FEET; THENCE N 01°12'19"W PARALLEL WITH AND 80.00 FEET WEST OF THE WEST RIGHT-OF-WAY LINE OF U.S. HIGHWAY #281 A DISTANCE OF 954.55 FEET; THENCE N 11°02'43"W A DISTANCE OF 380.33 FEET TO THE NORTH LINE OF SAID NORTH HALF (N 1/2) OF THE NORTHEAST QUARTER (NE 1/4); THENCE N 86°54'01"E ALONG SAID NORTH LINE OF THE NORTH HALF (N 1/2) OF THE NORTHEAST QUARTER (NE 1/4) A DISTANCE OF 50.05 FEET; THENCE S 11°02'43"E A DISTANCE OF 380.21 FEET; THENCE S 01°12'19"E PARALLEL WITH AND 30.00 FEET WEST OF SAID WEST RIGHT-OF-WAY LINE OF U.S. HIGHWAY #281 A DISTANCE OF 954.87 FEET TO THE POINT OF BEGINNING. SAID TRACT CONTAINS A CALCULATED AREA OF 66,584 SQUARE FEET OR 1.494 ACRES MORE OR LESS.

PERMANENT EASEMENT

TEMPORARY CONSTRUCTION EASEMENT

DWC: F:\Projects\012-1867\PBIN\Easements\0121867_EASE-SMITH.dwg USER: Ihusted

DATE: Mar 13, 2014 7:23am XREFS: 121867_pbase 0120030_xbase