



City of Grand Island

Tuesday, June 10, 2014

Council Session

Item G-14

**#2014-150 - Approving Certificate of Final Completion and
Scheduling the Board of Equalization for Sanitary Sewer District
No. 527T – Platte Valley Industrial Park**

Staff Contact: John Collins, P.E. - Public Works Director

Council Agenda Memo

From: Terry Brown PE, Assistant Public Works Director

Meeting: June 10, 2014

Subject: Approving Certificate of Final Completion and Scheduling the Board of Equalization for Sanitary Sewer District No. 527T – Platte Valley Industrial Park

Item #'s: G-14

Presenter(s): John Collins PE, Public Works Director

Background

This was a combined project of the City's Public Works and Utilities Departments for the installation of sanitary sewer lines and water main to provide municipal utility infrastructure to the Platte Valley Industrial Park Site. The project is located in 280 acre tract of land purchased by the Grand Island Area Economic Development Corporation, more commonly known as Platte Valley Industrial Park-East. The development area is located between Gold Core Drive and Blaine Street, and between Schimmer Drive and Wildwood Drive. Attached for reference is a map showing the construction area.

Funding assistance was provided for the project from the 2010 Community Development Block Grant (CDBG) Economic Development Program in the amount of \$935,000. This Block Grant required a City's matching fund of \$1,275,000. On October 26, 2010 the City Council approved authorizing the application for the Economic Development Grant from the Nebraska Department of Economic Development. Additionally, \$575,000 in Local Area Economic Development LB 840 funds were allocated to the project.

The contract for Sanitary Sewer District No. 527T was awarded to The Diamond Engineering Company of Grand Island, Nebraska on April 10, 2012, in the amount of \$484,384.60. Work on this project commenced in May, 2012 and was completed in January, 2013.

Discussion

Sanitary Sewer District No. 527T was created as a special economic development activity for development of a business/industrial park/site which will eventually be occupied by eligible benefited businesses.

The project provided nearly one mile of extended 18", and 15" sanitary sewer service along the length of Wildwood Drive and Schimmer Drive, between Gold Core and Blaine Street.

The connection fees for Sanitary Sewer District 527T are computed based on the construction being done as a "Tap" district. This is the standard method used by the City to recoup costs when sanitary sewer mains are installed across undeveloped lands. Those fees, are due when a property "taps" the main for service.

The connection fee for properties included in the referenced district is \$40.97 per front foot.

Sanitary sewer work on the project was completed at a construction price of \$508,855.21. Other credited funds are \$331,138.00, with a total project cost of \$592,606.80. Project costs break down as follows:

Original Bid	\$ 486,953.20
Change Order No. 1	\$ 9,572.88
Miscellaneous	\$ 12,329.13
SUBTOTAL (Construction Price)	\$ 508,855.21

Construction Engineering Costs	\$ 83,751.59
SUBTOTAL (Engineering / Inspections)	\$ 83,751.59

State of Nebraska DED CDBG	\$(254,572.00)
Grand Island Area Economic Development Corp.	\$ (76,566.00)
SUBTOTAL (Other Funding)	\$(331,138.00)

TOTAL COST	\$ 261,468.80
------------	---------------

The final assessment for Sanitary Sewer District 527T, Platte Valley Industrial Park East is \$261,468.80.

The assessed cost in the district and the City's costs break down as follows:

Total Assessed to Blattner Family Trust	\$ 47,526.22
Total Assessed to Grand Island Area Economic Development Corporation	\$213,942.58

TOTAL COST	\$261,468.80
------------	--------------

The Engineers Estimate for the project was underrun in the amount of \$6,261.61.

Alternatives

It appears that the Council has the following alternatives concerning the issue at hand. The Council may:

1. Move to approve
2. Refer the issue to a Committee
3. Postpone the issue to future date
4. Take no action on the issue

Recommendation

It is recommended that the Council accept the Certificate of Final Completion for Sanitary Sewer District 527T, and sit as Board of Equalization on July 8, 2014 to set the connection fee amount for the properties within the boundaries of Sanitary Sewer District 527T as tabulated on attached listing.

Sample Motion

Move to approve the resolution in Certificate of Final Completion for Sanitary Sewer District 527T with the Diamond Engineering Company of Grand Island, Nebraska; and

Move to approve City Council to sit as a Board of Equalization on July 8, 2014 to determine benefits and set assessments for Sanitary Sewer District 527T.

ENGINEER'S CERTIFICATE OF FINAL COMPLETION

SANITARY SEWER DISTRICT 527T

Grand Island Public Works Sanitary Sewer District 527T
Platte Valley Industrial Park - East
CITY OF GRAND ISLAND, NEBRASKA
June 10, 2014

TO THE MEMBERS OF THE COUNCIL
CITY OF GRAND ISLAND
GRAND ISLAND, NEBRASKA

This is to certify that Sanitary Sewer District 527T, Platte Valley Industrial Park - East has been fully completed by The Diamond Engineering Company of Grand Island, Nebraska under the contract dated April 17, 2012. The work has been completed in accordance with the terms, conditions, and stipulations of said contract and complies with the contract, the plans and specifications. The work is hereby accepted for the City of Grand Island, Nebraska, by me as Public Works Director in accordance with the provisions of Section 16-650 R.R.S., 1943.

Sanitary Sewer District 527T, Platte Valley Industrial Park – East

Bid Section

Item		Quantities		Total Amount	
No.	Description	Price Bid	Placed		Completed
1	18" PVC Sanitary Sewer Main (Installation)	\$ 25.00	2,895.00	I.f.	\$ 72,375.00
1B	S/M 18" SDR35 PVC GJ	\$ 15.50	2,895.00	I.f.	\$ 44,872.50
2	15" PVC Sanitary Sewer Main (Installation)	\$ 22.38	2,826.30	I.f.	\$ 63,252.59
2B	S/M 15" SDR35 PVC GJ	\$ 10.47	2,826.30	I.f.	\$ 29,591.36
3	12" PVC Sanitary Sewer Main	\$ 36.05	15.70	I.f.	\$ 565.98
4	10" PVC Sanitary Sewer Main	\$ 30.50	31.00	I.f.	\$ 945.50

5	Remove Sanitary Sewer Plug	\$ 56.30	1.00	ea.	\$ 56.30
6	12" PVC Plug	\$ 138.40	1.00	ea.	\$ 138.40
7	10" PVC Plug	\$ 125.50	2.00	ea.	\$ 251.00
8	4' Sanitary Sewer Manhole (Type 2)	\$ 3,280.00	17.00	ea.	\$ 55,760.00
9	Additional 4' Sanitary Sewer, Manhole Depth (Type 2)	\$ 237.60	73.20	v.f.	\$ 17,401.82
10	Remove and Replace 6" P.C.C. Driveway	\$ 39.45	126.10	s.y.	\$ 4,974.33
11	Dry Bore and Install 36" Encasement	\$ 376.50	252.50	l.f.	\$ 95,066.25
12	Remove 10" PVC Stubout	\$ 220.00	1.00	ea.	\$ 220.00
13	Remodel Manhole to Accept Proposed 15" PVC Main	\$ 780.00	1.00	ea.	\$ 780.00
14	Dewatering	\$ 17.05	5,721.30	l.f.	\$ 97,548.17
15	Restoration, Row Crop Areas	\$ 380.00	8.30	ac.	\$ 3,154.00

ORIGINAL BID SUBTOTAL =

\$ 486,953.20

Change Order No. 1

1	Encasement Rework	\$ 9,572.88	1.0	ls	\$ 9,572.88
---	-------------------	-------------	-----	----	-------------

CHANGE ORDER NO. 1 SUBTOTAL =

\$ 9,572.88

Miscellaneous

1.	Nunnenkamp Well Company				\$ 7,000.00
2.	The Grand Island Daily Independent				\$ 261.71
3.	Grand Island Printing Company				\$ 1,067.42
4.	Union Pacific Railroad				\$ 4,000.00

MISCELLANEOUS SUBTOTAL =

\$ 12,329.13

Engineering / Construction Phase Staff Hours

1.	Engineering/Construction Phase Staff Hours				\$ 83,751.59
----	--	--	--	--	--------------

**ENGINEERING / CONSTRUCTION PHASE
STAFF HOURS SUBTOTAL =****\$ 83,751.59****PROJECT EXPENSE COST:****\$ 592,606.80****Other Funding**

1. Community Development Block Grant Funding \$ (254,572.00)
2. LB 840 Funding (EDC) \$ (76,566.00)

OTHER FUNDING SUBTOTAL=**\$ (331,138.00)****TOTAL PROJECT COST:****\$ 261,468.80**

I hereby recommend that the Engineer's Certificate of Final Completion for Sanitary Sewer District 527T, Platte Valley Industrial Park - East be approved.

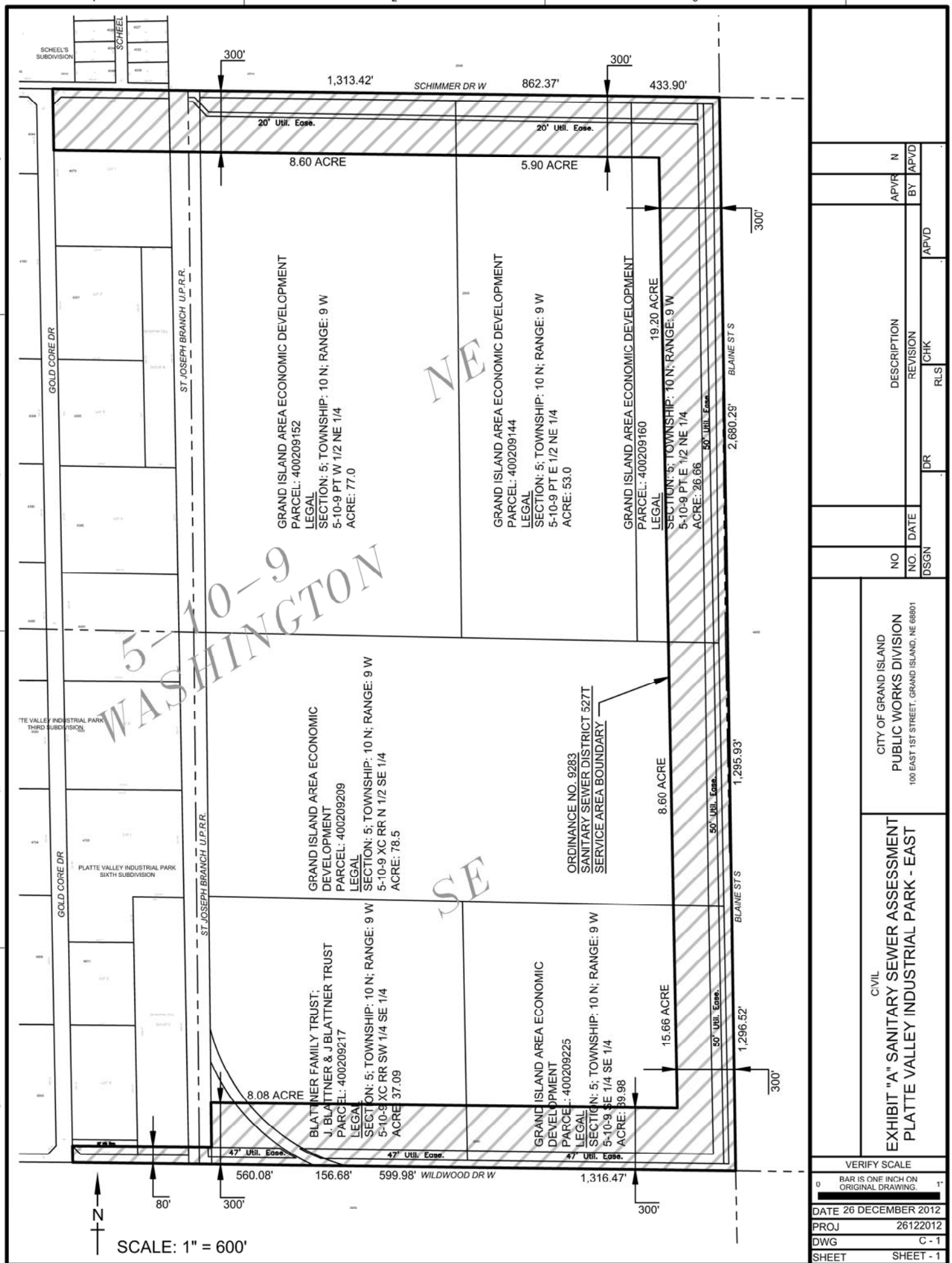
John Collins—Public Works Director

Date

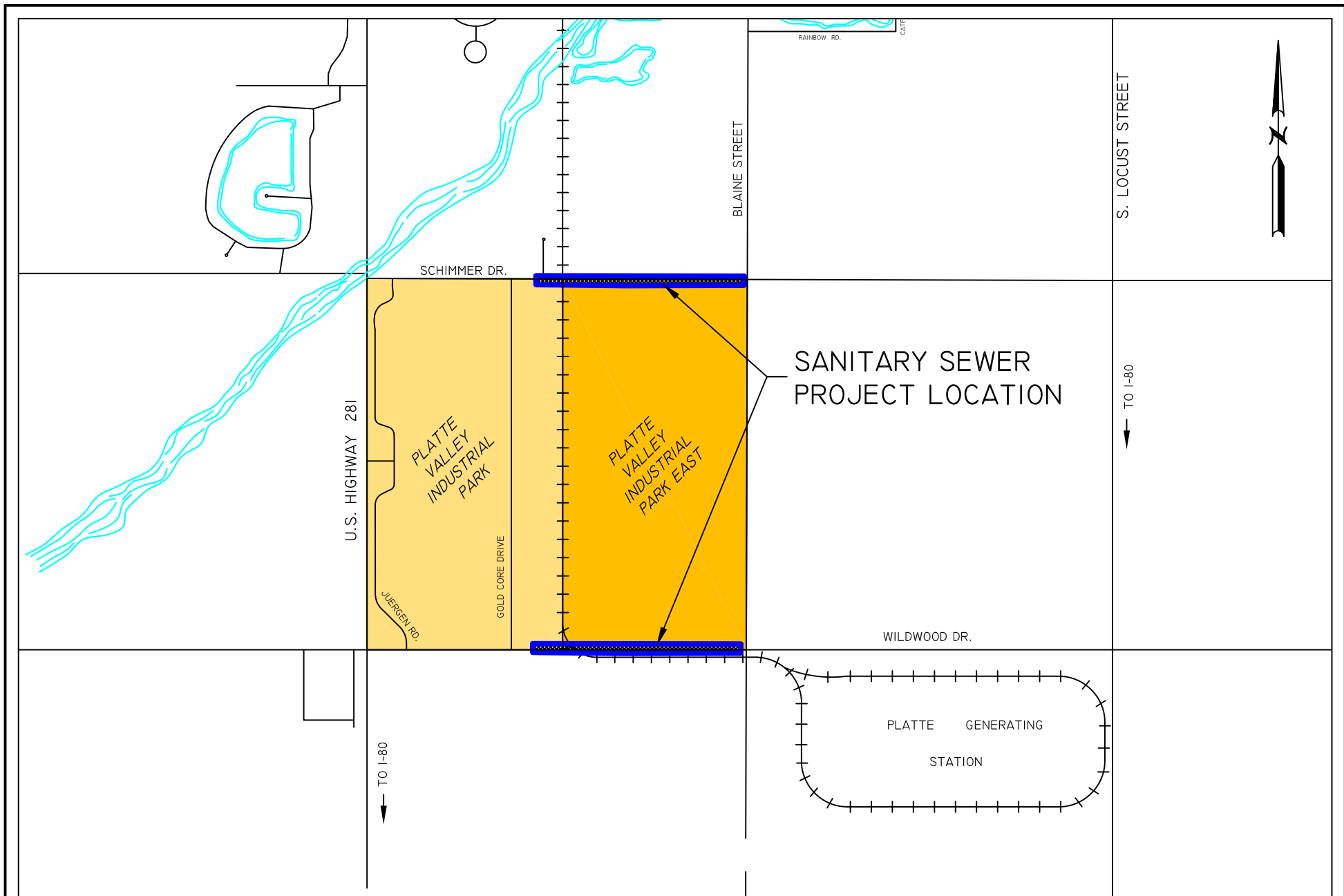
Jay Vavricek—Mayor

Date





FILENAME: PVP BASE MAP_SANITARY SEWER ASSESSMENT PLOT DATE: 26 DEC12



RESOLUTION 2014-150

WHEREAS, the City Engineer/Public Works Director for the City Of Grand Island has issued a Certificate of Completion for Platte Valley Industrial Park East; Sanitary Sewer District 527T, certifying that The Diamond Engineering Co., of Grand Island, Nebraska, under contract, has completed the improvement project; and

WHEREAS, the City Engineer/Public Works Director recommends the acceptance of the project; and

WHEREAS, the Mayor concurs with the recommendation of the City Engineer/Public Works Director.

NOW, THEREFORE, BE IT RESOLVED BY THE MAYOR AND COUNCIL OF THE CITY OF GRAND ISLAND, NEBRASKA, that:

The Certificate of Final Completion for Platte Valley Industrial Park East; Sanitary Sewer District 527T, certifying that The Diamond Engineering Co., of Grand Island, Nebraska, is hereby confirmed, for the total amount of \$496,526.08; and

The City Council will sit as a Board of Equalization on July 8, 2014 to determine benefits and set assessments for Sanitary Sewer District 527T.

- - -

Adopted by the City Council of the City of Grand Island, Nebraska, June 10, 2014.

Jay Vavricek, Mayor

Attest:

RaNae Edwards, City Clerk

Approved as to Form	☐ _____
June 6, 2014	☐ City Attorney