



# City of Grand Island

Tuesday, April 22, 2014

Council Session

## Item E-5

**Public Hearing on Acquisition of Utility Easement - West of Sky Park Road on the South Side of Airport Road - Petersen Farms, Inc.**

Staff Contact: Tim Luchsinger, Utilities Director

# **Council Agenda Memo**

**From:** Tim Luchsinger, Utilities Director

**Meeting:** April 22, 2014

**Subject:** Acquisition of Utility Easement – West of Sky Park Road on the south side of Airport Road – Petersen Farms, Inc.

**Item #'s:** E-5 & G-10

**Presenter(s):** Timothy Luchsinger, Utilities Director

## **Background**

Nebraska State Law requires that acquisition of property must be approved by City Council. The Utilities Department needs to acquire an easement relative to the property of Petersen Farms, located through a part of Lot One (1) Wilson's subdivision, Hall County, Nebraska (west of Sky Park Road on the south side of Airport Road), in order to have access to install, upgrade, maintain, and repair power appurtenances, including water lines.

## **Discussion**

Water Main District 466T has been designed to construct a 16" water main along the south side of Airport Road. A permanent easement needs to be obtained to locate the new pipe. Negotiations were conducted with three property owners including having the properties appraised.

The property owners have agreed to the appraised value as the cost to obtain the easement. The cost for the Douglas and Tamara Petersen property easement will be \$6,990.00.

## **Alternatives**

It appears that the Council has the following alternatives concerning the issue at hand. The Council may:

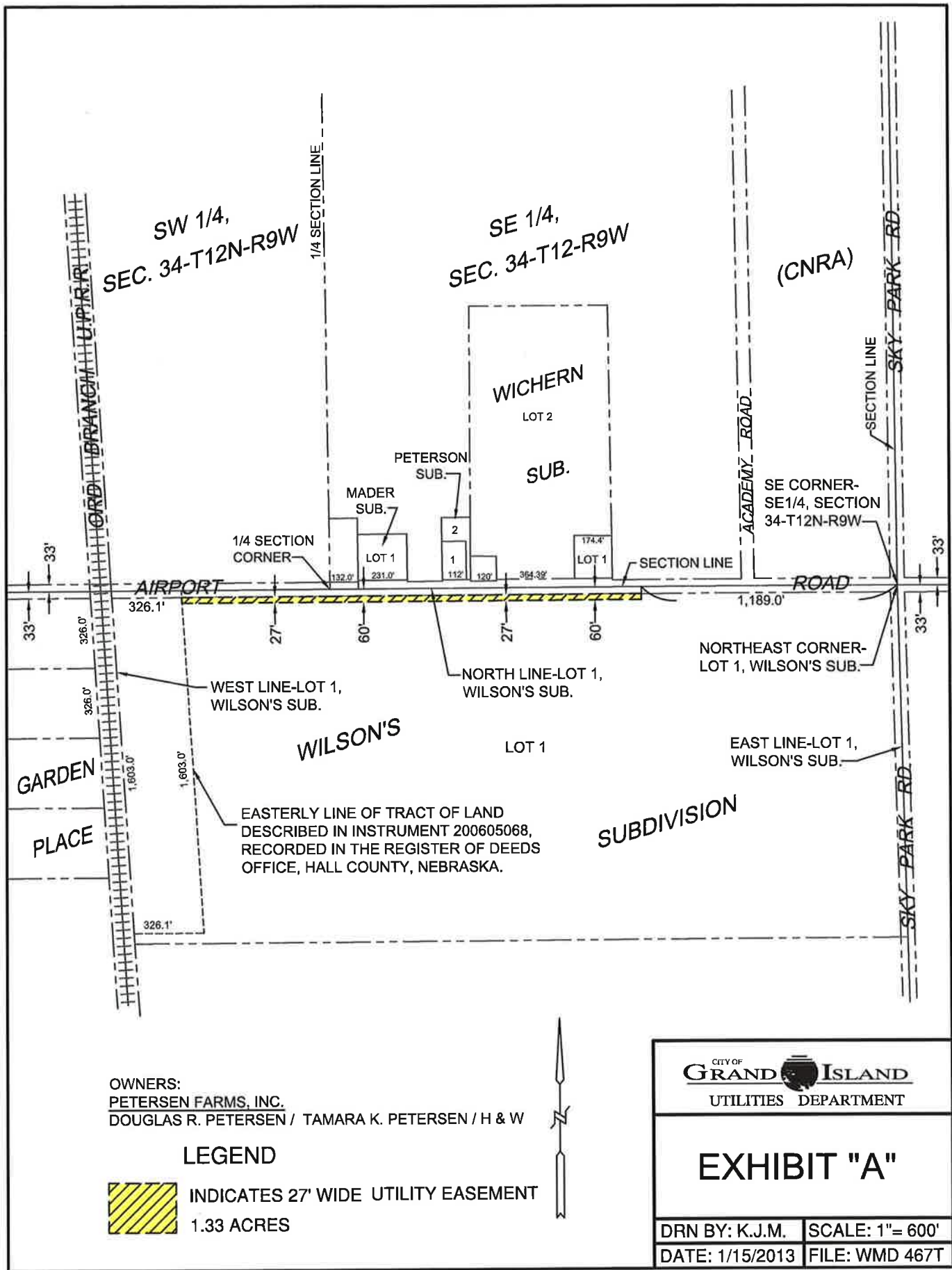
1. Make a motion to approve
2. Refer the issue to a Committee
3. Postpone the issue to future date
4. Take no action on the issue

## **Recommendation**

City Administration recommends that the Council approve the resolution for the acquisition of the easement for Six Thousand Nine Hundred and Ninety Dollars (\$6,990.00).


## **Sample Motion**

Move to approve acquisition of the Utility Easement.



OWNERS:  
PETERSEN FARMS, INC.  
 DOUGLAS R. PETERSEN / TAMARA K. PETERSEN / H & W

**LEGEND**

 INDICATES 27' WIDE UTILITY EASEMENT  
 1.33 ACRES



CITY OF <b>GRAND ISLAND</b> UTILITIES DEPARTMENT	
EXHIBIT "A"	
DRN BY: K.J.M.	SCALE: 1" = 600'
DATE: 1/15/2013	FILE: WMD 467T