



City of Grand Island

Tuesday, April 8, 2014

Council Session

Item E-3

Public Hearing on Acquisition of Utility Easement located at 3200 West Bachman Street in Wilson Concrete Subdivision (Wilson Concrete Company)

Staff Contact: John Collins, P.E. - Public Works Director

Council Agenda Memo

From: Terry Brown PE, Assistant Public Works Director

Meeting: April 8, 2014

Subject: Public Hearing on Acquisition of Utility Easement in Wilson Concrete Subdivision (Wilson Concrete Company)

Item #'s: E-3 & G-6

Presenter(s): John Collins PE, Public Works Director

Background

Street Improvement District No. 1260; Webb Road – South Webb Road extending north from Stolley Park Road to Union Pacific Railroad Tracks was created by City Council on February 12, 2013. In order for this district to be constructed the City needs to acquire a utility easement, as shown on the attached sketch.

Nebraska State Statutes stipulate that the acquisition of property requires a public hearing to be conducted with the acquisition approved by the City Council.

Discussion

Engineering staff of the Public Works Department have negotiated with the property owner to acquire the necessary utility easement to install and maintain utilities for Street Improvement District No. 1260. This utility easement will allow for the improvements to the roadway and drainage along this portion of Webb Road.

There will not be any compensation to the property owner for such utility easement, as this easement area involves an existing easement.

Alternatives

It appears that the Council has the following alternatives concerning the issue at hand. The Council may:

1. Move to approve
2. Refer the issue to a Committee

3. Postpone the issue to future date
4. Take no action on the issue

Recommendation

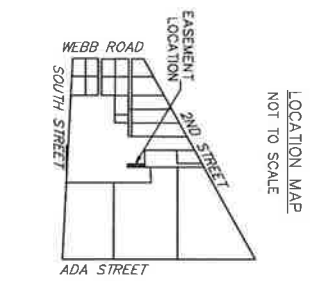
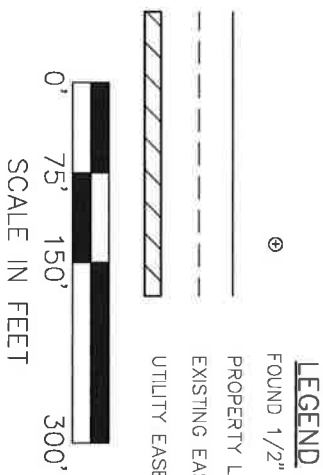
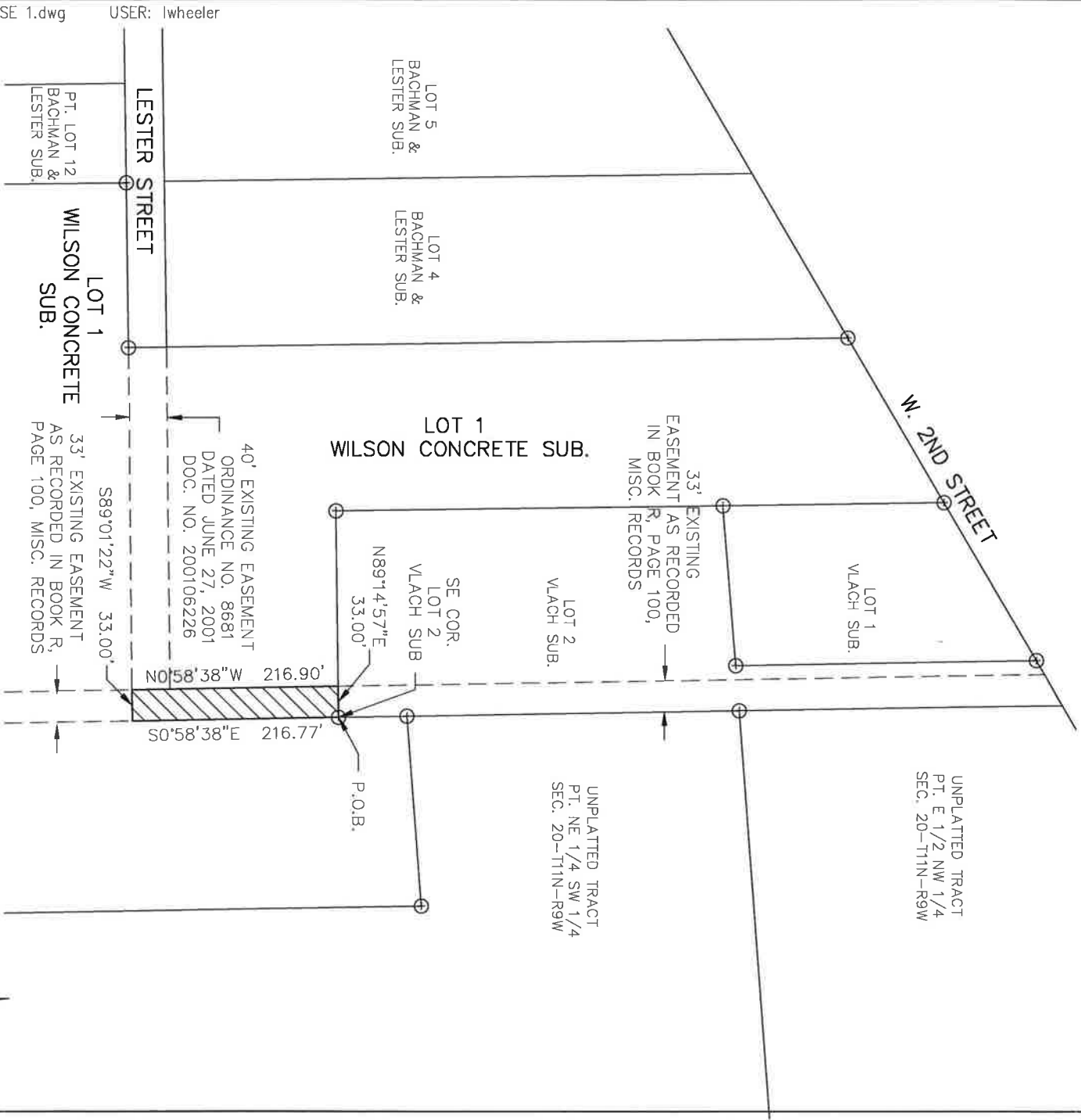
City Administration recommends that the Council conduct a Public Hearing and approve acquisition of the utility easement from Wilson Concrete Company for Street Improvement District No. 1260; Webb Road – South Webb Road extending north from Stolley Park Road to Union Pacific Railroad Tracks.

Sample Motion

Move to approve the resolution.

UTILITY EASEMENT

CITY OF GRAND ISLAND, HALL COUNTY, NEBRASKA



UTILITY EASEMENT DESCRIPTION

A UTILITY EASEMENT LOCATED IN PART OF LOT 1, WILSON CONCRETE SUBDIVISION, CITY OF GRAND ISLAND, HALL COUNTY, NEBRASKA, AND MORE PARTICULARLY DESCRIBED AS FOLLOWS:
 COMMENCING AT THE SOUTHEAST CORNER OF LOT 2 VLACH SUBDIVISION, SAID POINT ALSO BEING THE POINT OF BEGINNING, THENCE ON AN ASSUMED BEARING S0°58'38"E, ALONG THE EAST LINE OF AN EXISTING EASEMENT RECORDED IN BOOK R, PAGE 100, MISC. RECORDS, HALL COUNTY, NEBRASKA, A DISTANCE OF 216.77 FEET; THENCE S89°01'22"W A DISTANCE OF 33.00 FEET TO THE WEST LINE OF SAID EXISTING EASEMENT; THENCE N0°58'38"W, ALONG THE WEST LINE OF SAID EXISTING EASEMENT, A DISTANCE OF 216.90 FEET TO THE SOUTH LINE OF LOT 2, VLACH SUBDIVISION; THENCE N89°14'57"E, ALONG SAID SOUTH LINE OF LOT 2, A DISTANCE OF 33.00 FEET TO THE POINT OF BEGINNING. SAID UTILITY EASEMENT CONTAINS A CALCULATED AREA OF 7,155.51 SQUARE FEET OR 0.16 ACRES MORE OR LESS.

DWG: F:\projects\013-0908\SRVY\MasterXrefs\0130908_UTILITY EASE 1.dwg USER: lwheeler
 DATE: Dec 03, 2013 3:51pm XREFS: 0130908_XTOPO

PROJECT NO: 2013-0908	WEBB ROAD EASEMENTS	OLSSON ASSOCIATES	201 East 2nd Street P.O. Box 1072 Grand Island, NE 68802-1072 TEL 308.394.8750 FAX 308.394.8752	EXHIBIT
DRAWN BY: LWJ				1
DATE: 10/03/2013				