



# City of Grand Island

Tuesday, April 8, 2014

Council Session

## Item E-1

**Public Hearing on Acquisition of Utility Easement - 3120 W. Old  
Potash Hwy. - Brand**

Staff Contact: Tim Luchsinger, Utilities Director

# **Council Agenda Memo**

**From:** Tim Luchsinger, Utilities Director  
**Meeting:** April 8, 2014  
**Subject:** Acquisition of Utility Easement – Southwest Corner of 3120 W. Old Potash Hwy. – Brand  
**Item #'s:** E-1 & G-3  
**Presenter(s):** Timothy Luchsinger, Utilities Director

## **Background**

Nebraska State Law requires that acquisition of property must be approved by City Council. The Utilities Department needs to acquire an easement relative to the property of Kenneth L. and Mary M. Brand, located at 3120 W. Old Potash Highway, in the City of Grand Island, Hall County, in order to have access to install, upgrade, maintain, and repair power appurtenances, including lines and transformers.

## **Discussion**

Culligan is increasing their electrical needs and will need a larger service from the City Utilities Department. To fulfill that need, a three-phase pad-mounted transformer will be located on the property line between Culligan at 3112 Old Potash Highway and Brands at 3120 Old Potash Highway. An easement is needed on both properties to place the transformer. The transformer can serve both businesses.

## **Alternatives**

It appears that the Council has the following alternatives concerning the issue at hand. The Council may:

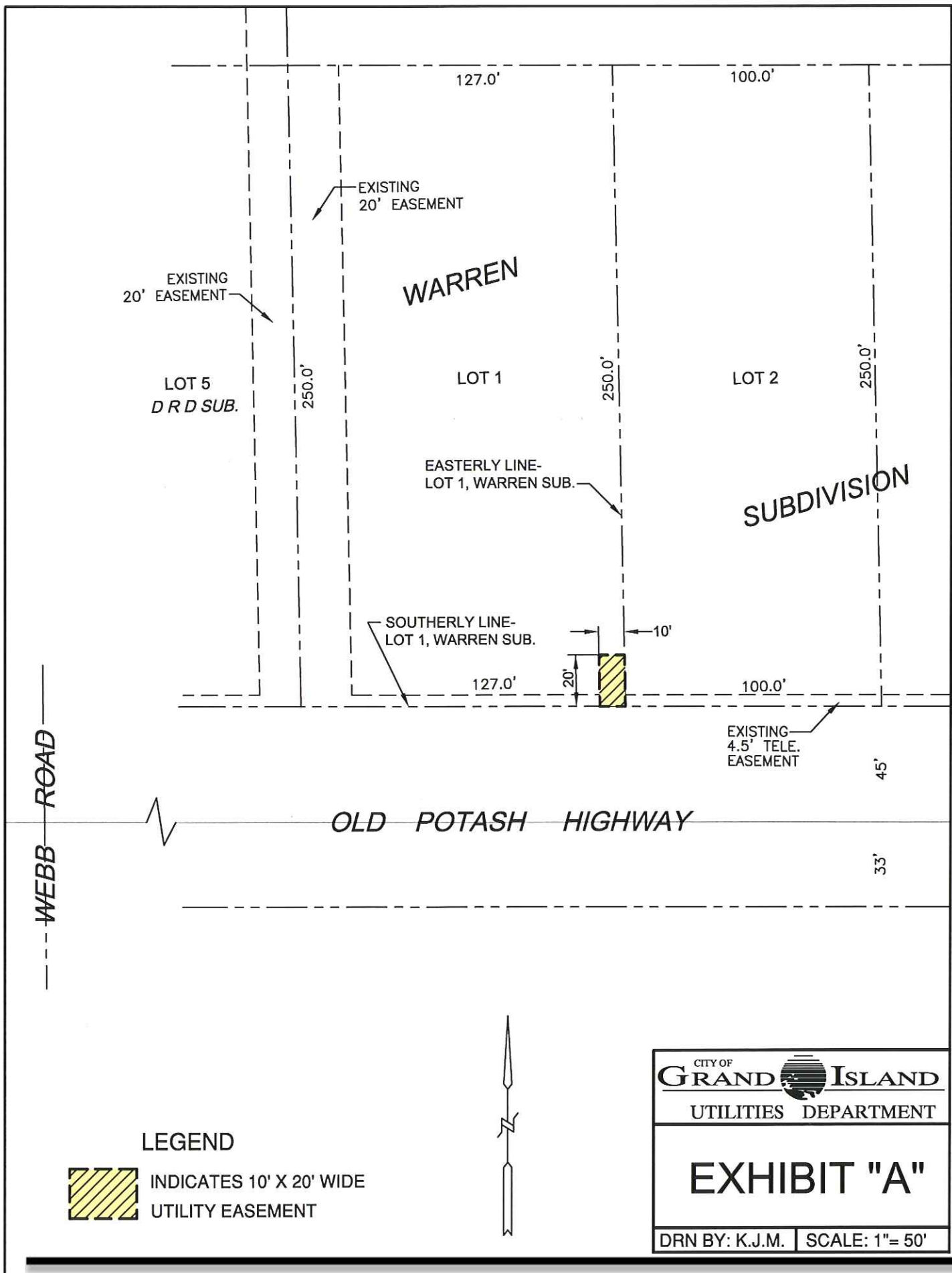
1. Make a motion to approve
2. Refer the issue to a Committee
3. Postpone the issue to future date
4. Take no action on the issue

## **Recommendation**

City Administration recommends that the Council approve the resolution for the acquisition of the easement for one dollar (\$1.00).

## **Sample Motion**

Move to approve acquisition of the Utility Easement.



WEBB ROAD

OLD POTASH HIGHWAY

WARREN

SUBDIVISION

LOT 5  
DRD SUB.

LOT 1

LOT 2

EXISTING  
20' EASEMENT


EXISTING  
20' EASEMENT

EASTERLY LINE-  
LOT 1, WARREN SUB.

SOUTHERLY LINE-  
LOT 1, WARREN SUB.

EXISTING  
4.5' TELE.  
EASEMENT

LEGEND

 INDICATES 10' X 20' WIDE  
UTILITY EASEMENT



CITY OF <b>GRAND ISLAND</b>	
UTILITIES DEPARTMENT	
<b>EXHIBIT "A"</b>	
DRN BY: K.J.M.	SCALE: 1" = 50'