



City of Grand Island

Tuesday, February 25, 2014

Council Session

Item E-2

Public Hearing on Acquisition of Utility Easement in Vlach Subdivision (Vlach Properties, LLC)

Staff Contact: John Collins, P.E. - Public Works Director

Council Agenda Memo

From: Terry Brown PE, Assistant Public Works Director

Meeting: February 25, 2014

Subject: Public Hearing on Acquisition of Utility Easement in Vlach Subdivision (Vlach Properties, LLC)

Item #'s: E-2 & G-11

Presenter(s): John Collins PE, Public Works Director

Background

Street Improvement District No. 1260; Webb Road – South Webb Road extending north from Stolley Park Road to Union Pacific Railroad Tracks was created by City Council on February 12, 2013. In order for this district to be constructed the City needs to acquire a utility easement, as shown on the attached sketch.

Nebraska State Statutes stipulate that the acquisition of property requires a public hearing to be conducted with the acquisition approved by the City Council.

Discussion

Engineering staff of the Public Works Department have negotiated with the property owner to acquire the necessary utility easement to install and maintain utilities for Street Improvement District No. 1260. This utility easement will allow for the improvements to the roadway and drainage along this portion of Webb Road.

There will not be any compensation to the property owner for such utility easement, as this easement area involves an existing easement.

Alternatives

It appears that the Council has the following alternatives concerning the issue at hand. The Council may:

1. Move to approve
2. Refer the issue to a Committee
3. Postpone the issue to future date

4. Take no action on the issue

Recommendation

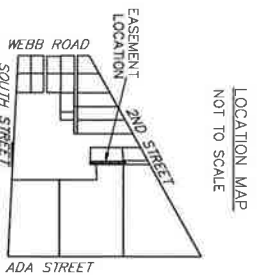
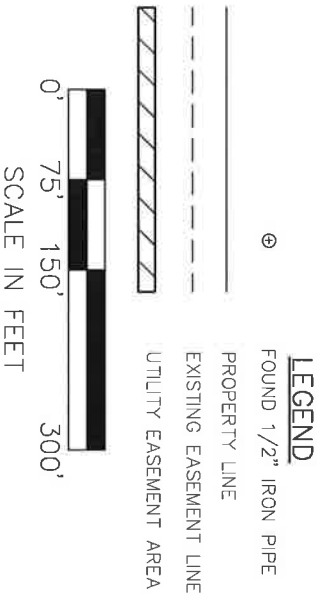
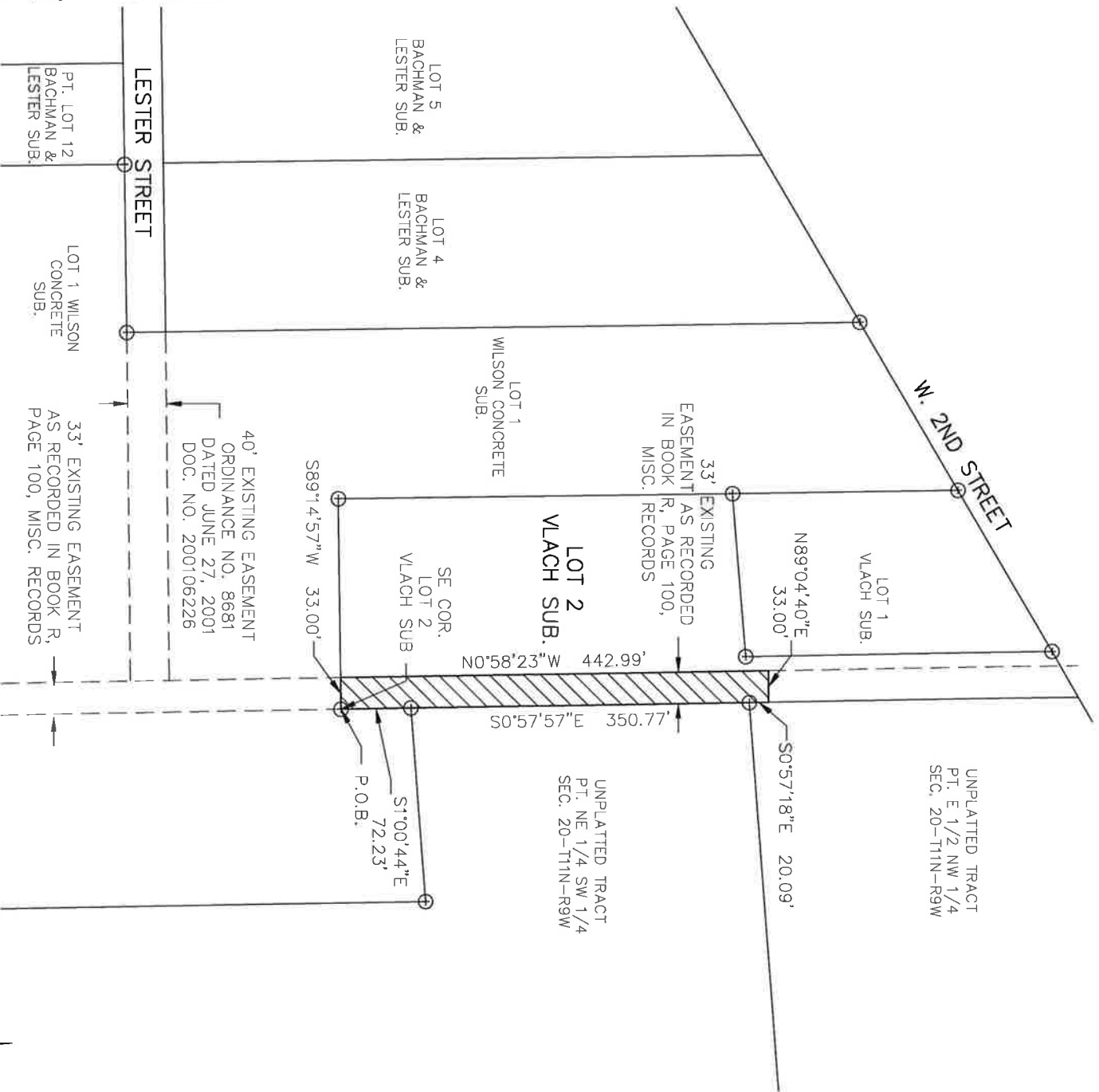
City Administration recommends that the Council conduct a Public Hearing and approve acquisition of the utility easement from Vlach Properties, LLC for Street Improvement District No. 1260; Webb Road – South Webb Road extending north from Stolley Park Road to Union Pacific Railroad Tracks.

Sample Motion

Move to approve the resolution.

UTILITY EASEMENT

CITY OF GRAND ISLAND, HALL COUNTY, NEBRASKA



UTILITY EASEMENT DESCRIPTION

A UTILITY EASEMENT LOCATED IN PART OF LOT 2, VLACH SUBDIVISION, CITY OF GRAND ISLAND, HALL COUNTY, NEBRASKA, AND MORE PARTICULARLY DESCRIBED AS FOLLOWS:
 COMMENCING AT THE SOUTHEAST CORNER OF LOT 2, VLACH SUBDIVISION, SAID POINT ALSO BEING THE POINT OF BEGINNING, THENCE ON AN ASSUMED BEARING S89°14'57"W, ALONG THE SOUTH LINE OF LOT 2, A DISTANCE OF 33.00 FEET, TO THE WEST LINE OF AN EXISTING EASEMENT RECORDED IN BOOK R, PAGE 100, MISC. RECORDS, HALL COUNTY, NEBRASKA; THENCE N00°58'23"W, ALONG SAID WEST LINE OF AN EXISTING EASEMENT, A DISTANCE OF 442.99 FEET; THENCE N89°04'40"E A DISTANCE OF 33.00 FEET TO THE EAST LINE OF LOT 2; THENCE S00°57'18"E, ALONG SAID EAST LINE OF LOT 2, A DISTANCE OF 20.09 FEET; THENCE S00°57'57"E, ALONG THE EAST LINE OF LOT 2, A DISTANCE OF 350.77 FEET; THENCE S01°00'44"E, ALONG THE EAST LINE OF LOT 2, A DISTANCE OF 72.23 FEET TO THE POINT OF BEGINNING. SAID UTILITY EASEMENT CONTAINS A CALCULATED AREA OF 14,608.71, SQUARE FEET OR 0.34 ACRES MORE OR LESS.

PROJECT NO: 2013-0908
 DRAWN BY: LWJ
 DATE: 10/03/2013

**WEBB ROAD
EASEMENTS**

**WOLSSON
ASSOCIATES**

201 East 2nd Street
 P.O. Box 1072
 Grand Island, NE 68802-1072
 TEL: 308.384.8130
 FAX: 308.384.8752

EXHIBIT
1

DWG: F:\projects\013-0908\SRVY\MasterXrefs\0130908_UTILITY EASE 2.dwg
 DATE: Dec 02, 2013 10:47am
 USER: lwheeler
 XREFS: 0130908_XTOPO