



# **City of Grand Island**

**Thursday, August 8, 2013**

**Study Session**

## **Item -1**

### **Wastewater Budget for 2013-2014**






**Staff Contact: John Collins, P.E. - Public Works Director**

# Wastewater Budget 2014





## Enterprise Fund

## Funding Sources

### Operating Revenue:

 Sewer Assessments:	\$ 55,000
 Sewer Tap Fees:	\$ 5,000
 Sewer Revenue:	\$ 8,917,987
 Sewer Assessment Interest:	\$ 10,000
 Other Revenue:	<u>\$ 289,830</u>
Total:	<b>\$ 9,269,817</b>


## General Operations

 Staff:	\$ 417,708
 Operating:	\$1,270,248
 Debt Service:	<u>\$2,370,139</u>
 Total:	<b>\$4,058,095</b>





## Treatment Plant

### Treatment, Compost & Capital

 Staff: \$ 1,612,276





 Operating: \$ 1,653,650

 Capital: \$29,361,504





 Total: **\$32,627,430**

## Collections





### Collection & Capital

 Staff:	\$ 625,265
 Operating:	\$ 589,889
 Capital:	<u>\$ 0</u>
 Total:	<b>\$ 1,215,154</b>

## Totals

 General:	\$ 4,058,095
 Treatment:	\$32,627,430
 Collections:	<u>\$ 1,215,154</u>
 Total:	<b>\$37,900,679</b>

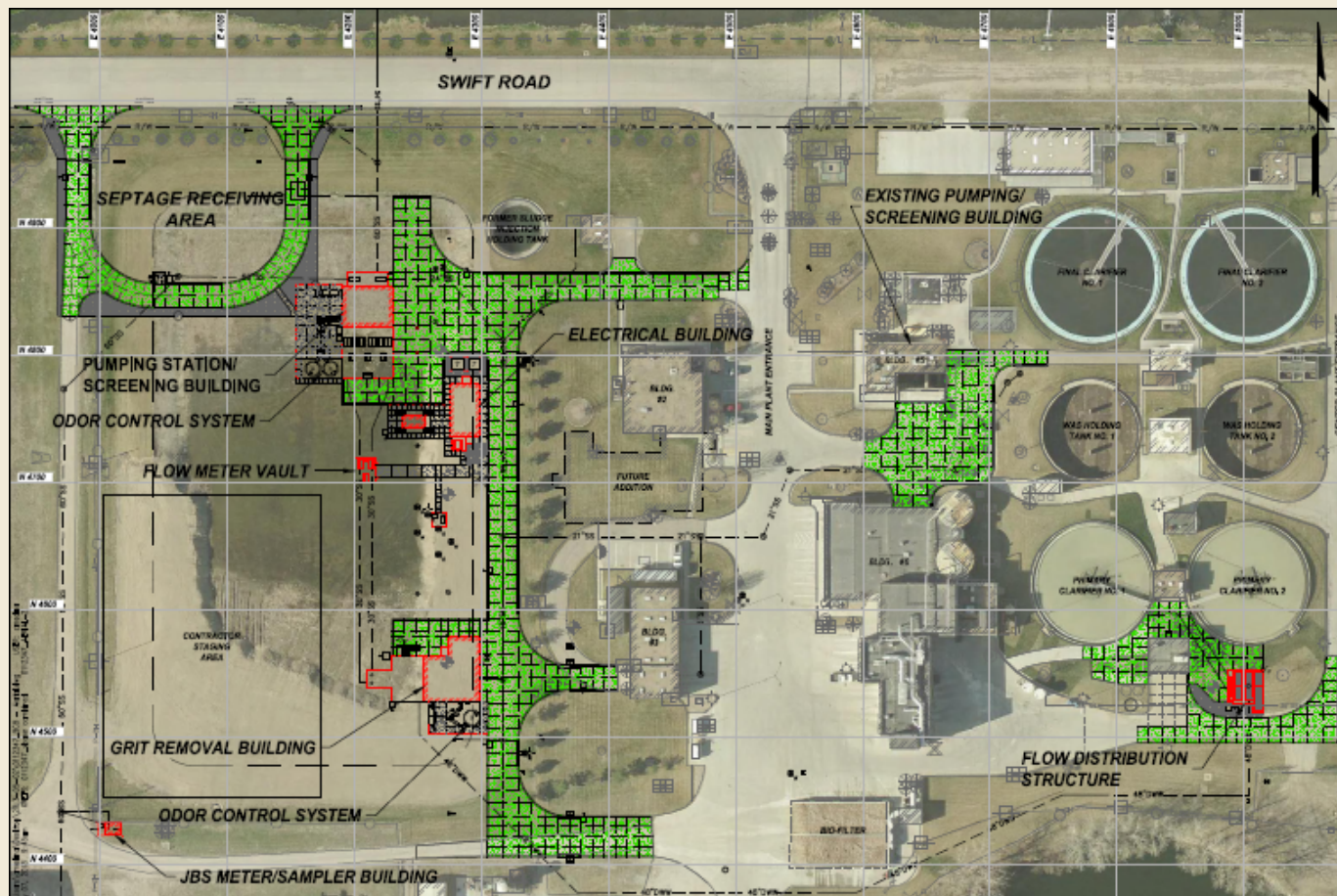
## Overview

 Beginning Cash Balance:	\$38,029,957
 Revenue:	\$ 9,269,817
 Expenditures:	\$37,900,679
 Ending Cash Balance:	\$ 9,399,095

## 2014 Capital Projects

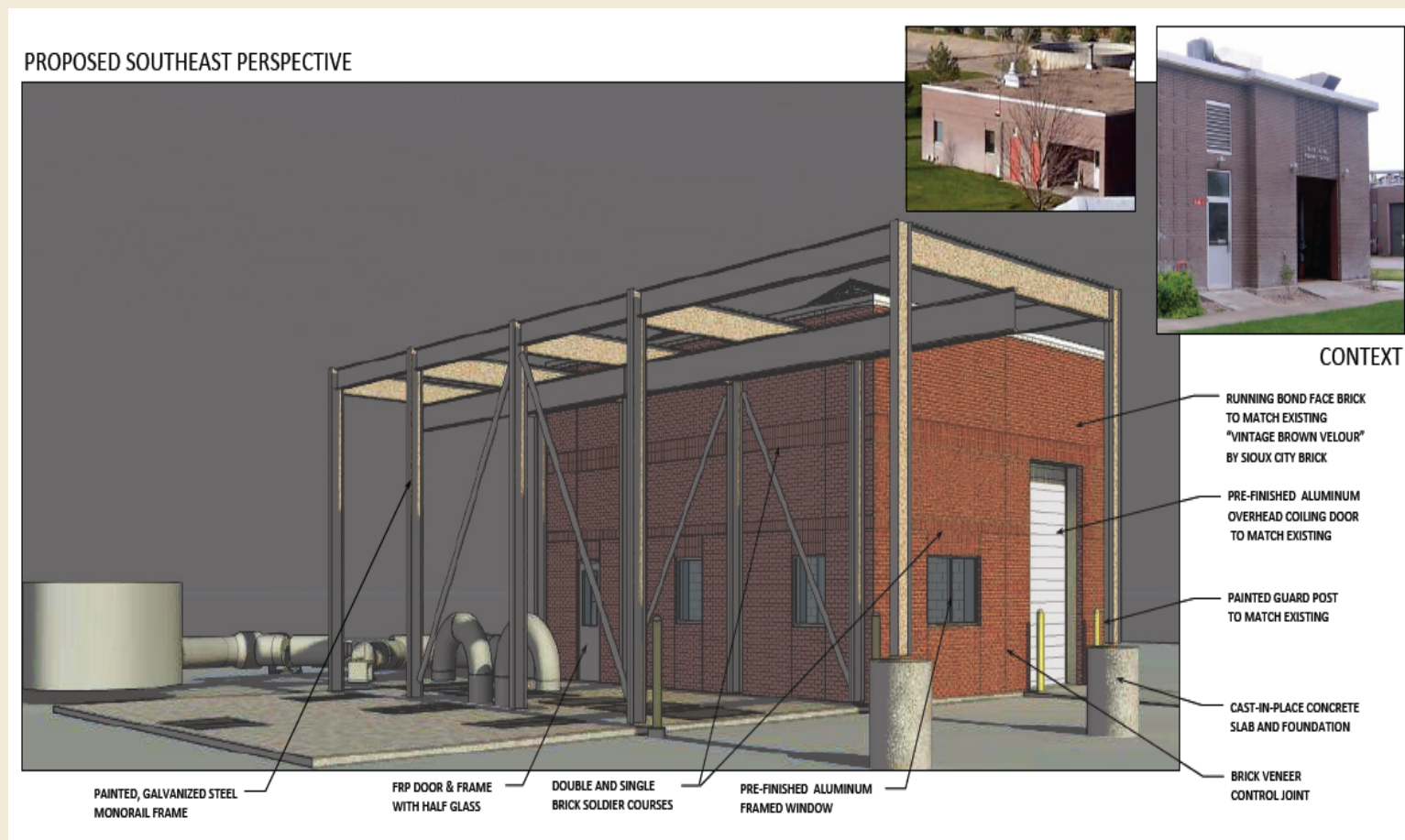
- 🌊 Headworks – [\$15,054,000] – replacement of Influent Pumps, Mechanically Cleaned Bar Screen and Grit Facility installed in 1965. Also sized to hydraulically handle projected growth through 2062

## Headworks

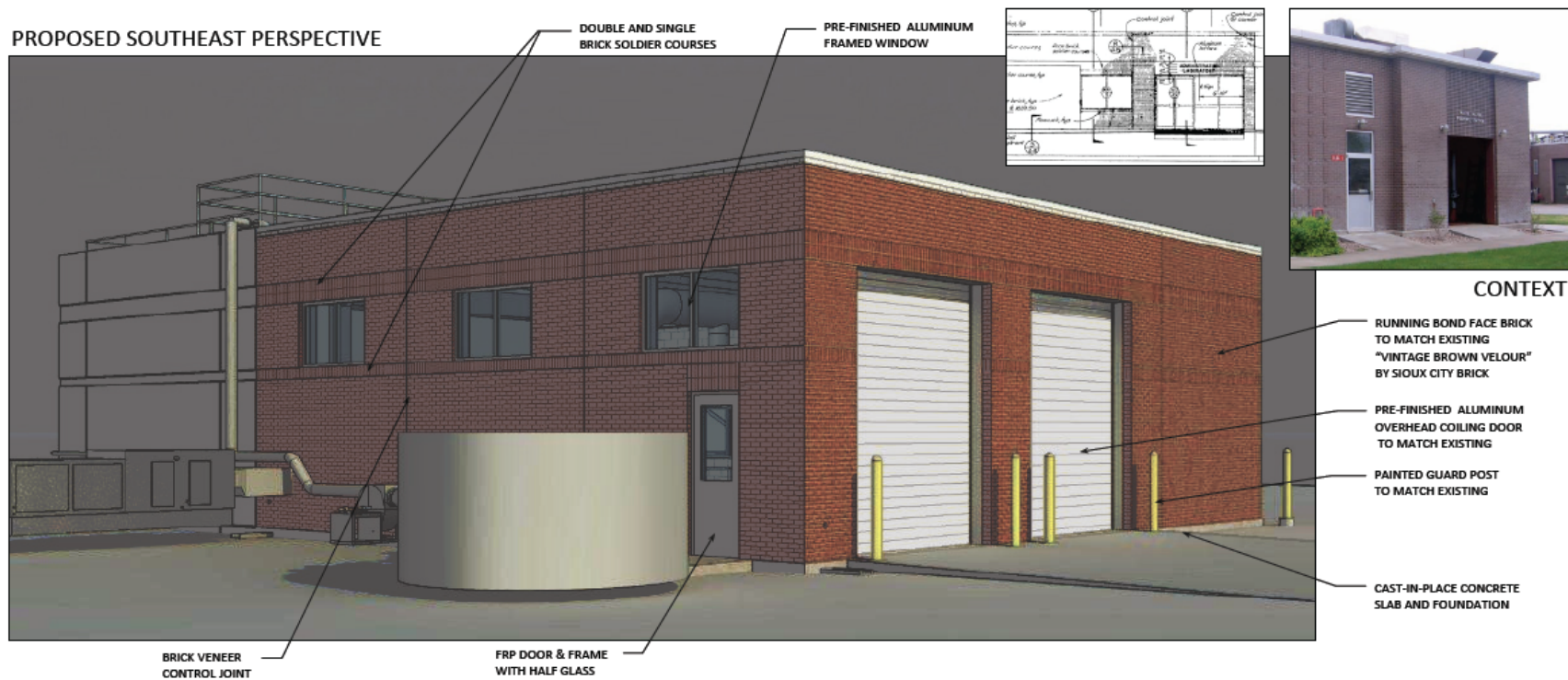




# Headworks



# Headworks

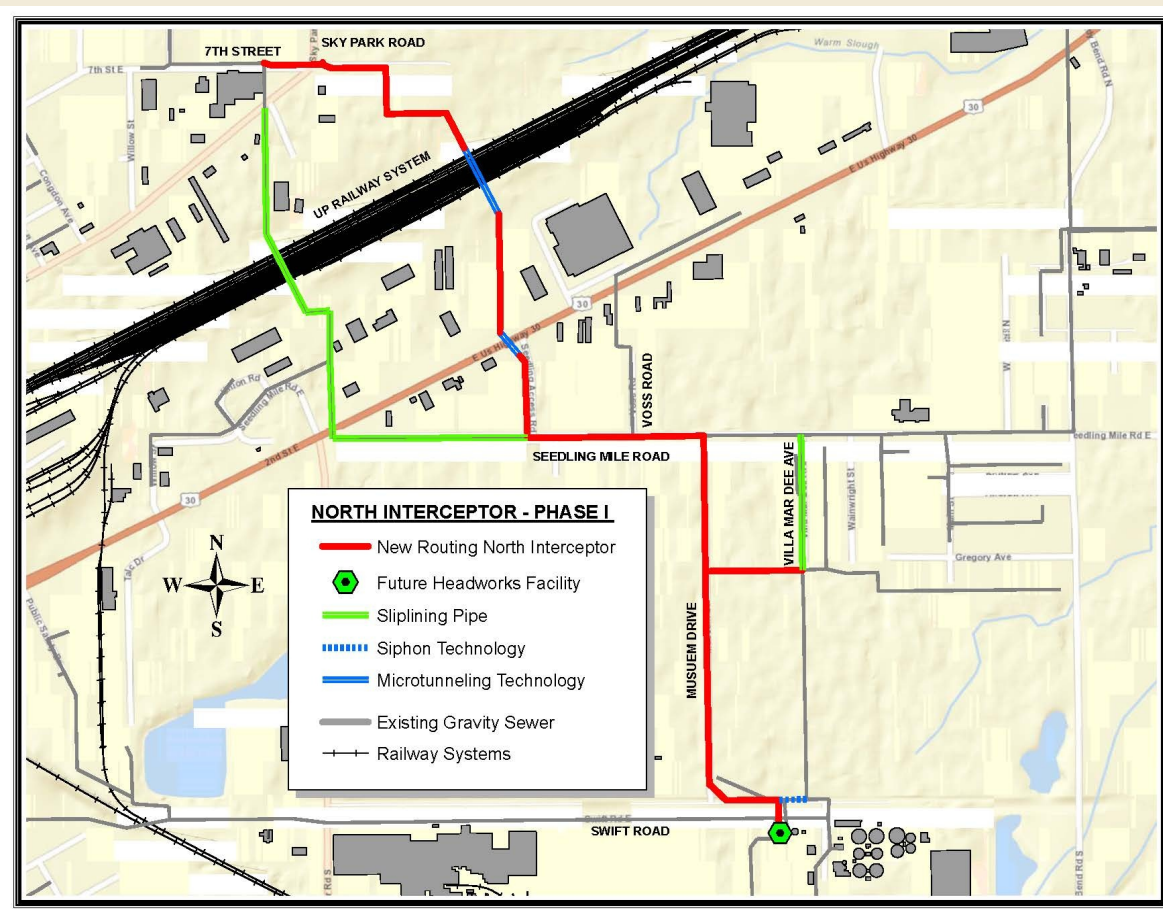




## 2014 Capital Projects

- 🌊 North Interceptor Phase 1 (WWTP to Sky Park Road and 7<sup>th</sup> Street) [\$10,362,086] – address the infrastructure to replace the “F” rated piping; Also sized to accommodate projected growth through the Year 2062

## North Interceptor Phase 1



### North Interceptor Phase 1





### North Interceptor Phase 1



## North Interceptor Phase 2b

- North Interceptor Phase 2b (Broadwell to Custer) [\$1,450,000] – To be done in conjunction with Capital Avenue widening, address the infrastructure to replace the “F” rated piping; Also sized to accommodate projected growth through the Year 2062



## North Interceptor Phase 2b



## 2014 Capital Projects

- 🌊 US Highway 281 Tap District [\$2,410,000] (SRF)—extension of sanitary sewer south along US Highway 281 to Interstate 80
- 🌊 Husker Highway[\$250,000] – Engineering to provide sanitary sewer service to the Fairway Crossings at Indianhead Golf Club First Subdivision
- 🌊 Wildwood Subdivision [\$1,400,000] – provide sanitary sewer service to this subdivision per District creation

## 2014 Capital Projects

- 🌊 Capital Outlay (Buildings, Vehicles, Machinery & Equipment) [\$209,000]
- 🌊 Sewer Rehabilitation – Various Locations [\$200,000] – rehabilitate any infrastructure issues that arise during the fiscal year
- 🌊 Unknown Sewer Districts [\$100,000] – address sewer districts that may be created during the fiscal year
- 🌊 Lift Station #7 Repairs/Improvements [\$31,487] – Upgrade LS #7 to accommodate more flow



## 2014 Capital Projects

- Automation/Asset Management [\$100,000] – improve tracking of maintenance/repairs at the plant
- Utility Billing Software Allocation [\$164,931] – Upgrade existing billing software

## 2013 Capital Projects Substantially Complete

- 🌊 4<sup>th</sup> and 5<sup>th</sup> Eddy to Vine
- 🌊 Southwest Interceptor
- 🌊 Lift Station #7 Repairs/Improvements
- 🌊 Platt Valley Industrial Park
- 🌊 Master Planning

## 2014 Projected Operations & Maintenance Savings

- 2013 WWTP Utility Service (Electricity) \$680,000
- 2014 WWTP Utility Service (Electricity) \$510,000
  - Includes Estimated Rate Increase
- 2013 Contract Services, Diesel Fuel, Other General Supplies (Sludge Disposal) \$425,000
- 2014 Contract Services, Diesel Fuel, Other General Supplies (Sludge Disposal) \$220,000
- One Vacant Position Eliminated