



Hall County Regional Planning Commission

Wednesday, April 2, 2014
Regular Meeting

Item J1

Final Plat

Staff Contact: Chad Nabity

March 19, 2014

Dear Members of the Board:

RE: Final Plat – Copper Creek Estates 7th Subdivision – Final Plat.

For reasons of Section 19-923 Revised Statutes of Nebraska, as amended, there is herewith submitted a final plat of Copper Creek Estates 7th Subdivision, located in the City of Grand Island, in Hall County Nebraska.

This final plat proposes to create 31 lots, on a tract of land comprising all of Lots Sixty Three (63) thru Sixty Eight (68), Part of Vacated Lots Sixty Nine (69) thru Seventy One (71), Lots Seventy Two (72) thru Seventy Six (76), Lots Seventy Nine (79) thru Eighty Three (83), Part of Vacated Lot Eighty Four (84), Lots Eighty Five (85) and Eighty Six (86), Lots Eighty Nine (89) thru Ninety Two (92) and Outlot 'C', Copper Creek Estates Subdivision along with a part of the Northwest Quarter (NW1/4), all in Section Twenty Three (23), Township Eleven (11) North, Range Ten (10) West of the 6th P.M. in the City of Grand Island, Hall County, Nebraska, said tract containing 5.85 acres.

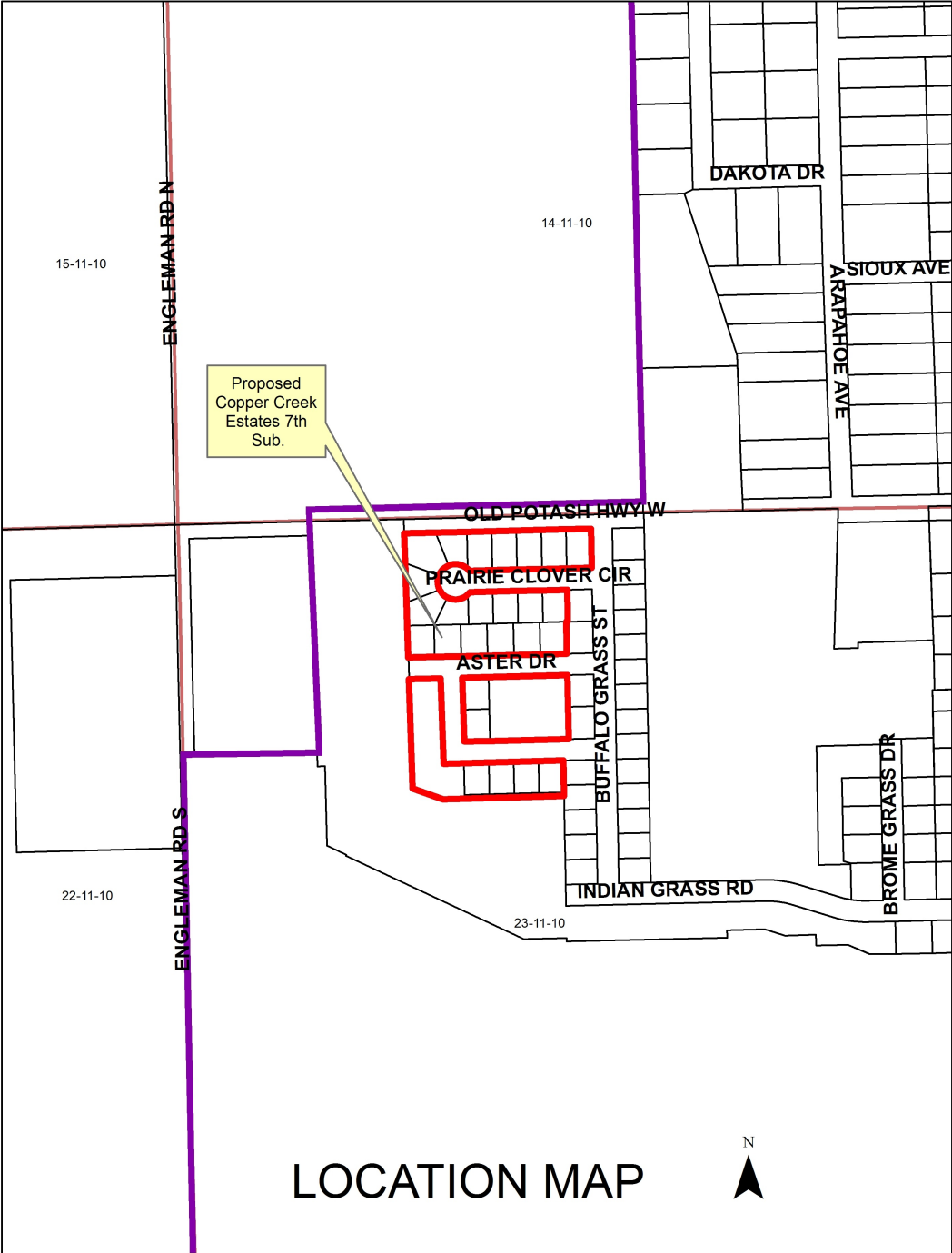
You are hereby notified that the Regional Planning Commission will consider this final plat at the next meeting that will be held at 6:00 p.m. on April 2, 2014 in the Council Chambers located in Grand Island's City Hall.

Sincerely,

Chad Nability, AICP
Planning Director

Cc: City Clerk
City Attorney
City Public Works
City Building Department
City Utilities
Manager of Postal Operations
Rockwell & Associates

This letter was sent to the following School Districts 1R, 2, 3, 19, 82, 83, 100, 126.



March 19, 2014

Dear Members of the Board:

RE: Final Plat – Bull & Dot’s Subdivision – Final Plat.

For reasons of Section 19-923 Revised Statutes of Nebraska, as amended, there is herewith submitted a final plat of Bull & Dot’s Subdivision, in Hall County Nebraska.

This final plat proposes to create 1 lot, on a tract of land comprising a part of the South Half of the Northeast Quarter (S1/2NE1/4), of Section Twenty Seven (27), Township Eleven (11) North, Range Twelve (12), West of the 6th P.M. in Hall County, Nebraska, said tract containing 3.072 acres.

You are hereby notified that the Regional Planning Commission will consider this final plat at the next meeting that will be held at 6:00 p.m. on April 2, 2014 in the Council Chambers located in Grand Island's City Hall.

Sincerely,

Chad Nabity, AICP
Planning Director

Cc: Hall County Clerk
Hall County Attorney
Hall County Public Works
Hall County Zoning Department
Manager of Postal Operations
Rockwell & Associates

This letter was sent to the following School Districts 1R, 2, 3, 19, 82, 83, 100, 126.

