



# **City of Grand Island**

**Tuesday, October 22, 2013**

**Council Session**

## **Item E-2**

**Public Hearing on Acquisition of Drainage Easements in Copper Creek Estates Third and Fourth Subdivision (The Guarantee Group, LLC)**

**Staff Contact: John Collins, P.E. - Public Works Director**

# **Council Agenda Memo**

**From:** Terry Brown PE, Manager of Engineering Services

**Meeting:** October 22, 2013

**Subject:** Public Hearing on Acquisition of Drainage Easements in Copper Creek Estates Third and Fourth Subdivision (The Guarantee Group, LLC)

**Item #'s:** E-2 & G-6

**Presenter(s):** John Collins PE, Public Works Director

## **Background**

Nebraska State Statutes stipulate that the acquisition of property requires a public hearing to be conducted with the acquisition approved by the City Council. Drainage easements need to be dedicated between Cooper Creek Estates Third Subdivision and Copper Creek Estates Fourth Subdivision to allow for further development of the area.

## **Discussion**

These easements will allow for drainage within the Cooper Creek Estates Third Subdivision and Copper Creek Estates Fourth Subdivision, and permit further housing development. The new easements will be a total of ten (10) feet wide, as shown on the attached drawings.

## **Alternatives**

It appears that the Council has the following alternatives concerning the issue at hand. The Council may:

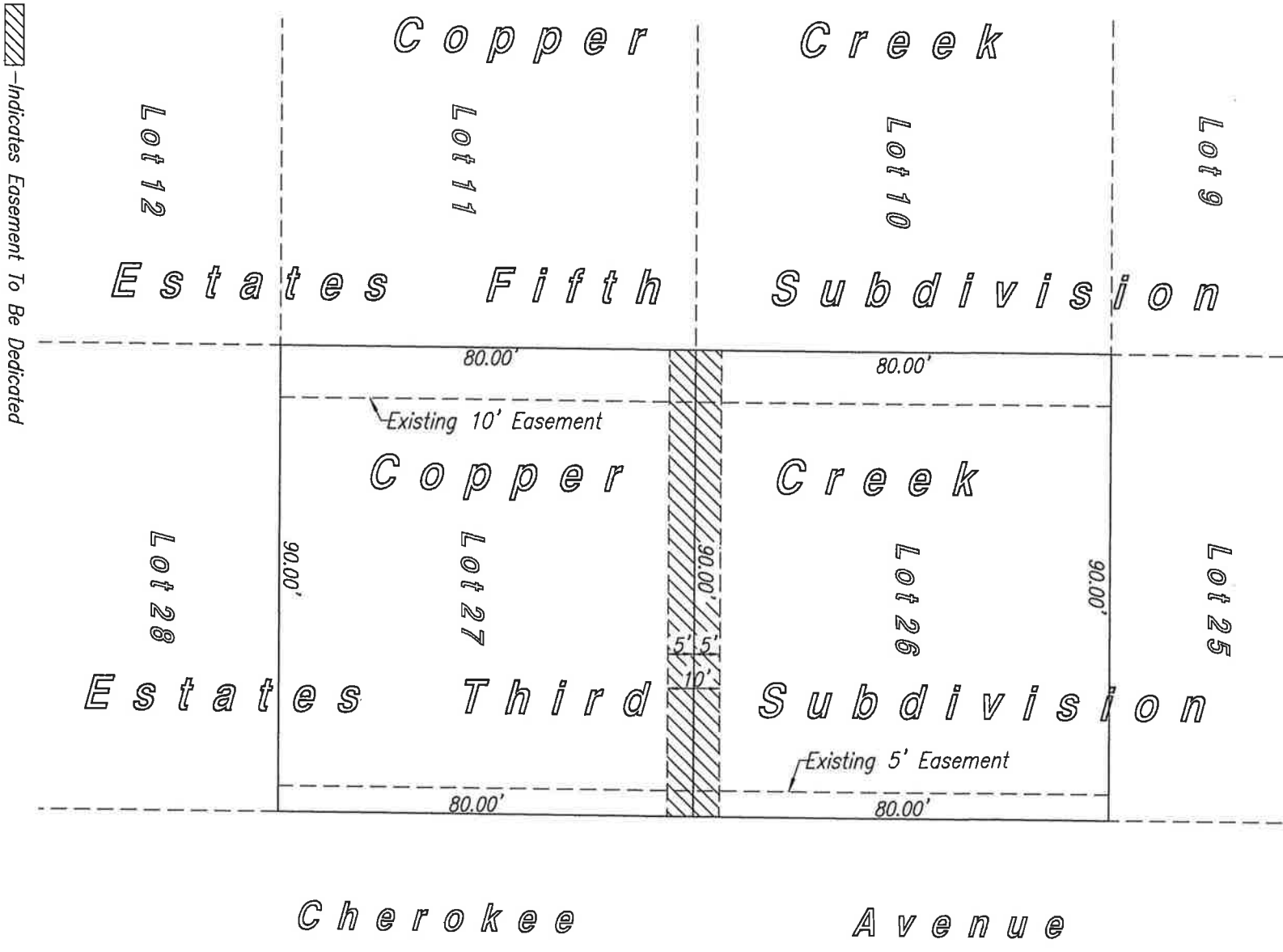
1. Move to approve
2. Refer the issue to a Committee
3. Postpone the issue to future date
4. Take no action on the issue

## **Recommendation**

City Administration recommends that the Council conduct a Public Hearing and approve acquisition of the drainage easement sin Cooper Creek Estates Third Subdivision and Copper Creek Estates Fourth Subdivision.

## **Sample Motion**

Move to approve the acquisition of the drainage easments.



Scale : 1" = 30'

**Description (10' Wide Drainage Easement)**

A Ten (10.00) foot wide tract of land comprising the northerly Five (5.00) feet of Lot Twenty Seven (27) and the Southerly Five (5.00) feet of Lot Twenty Six (26), all located in Copper Creek Estates Third Subdivision, in the City of Grand Island, Nebraska, said tract containing 0.021 acres (900 Sq. Ft.) more or less.

**Exhibit 'A'**

Date : October 7, 2013

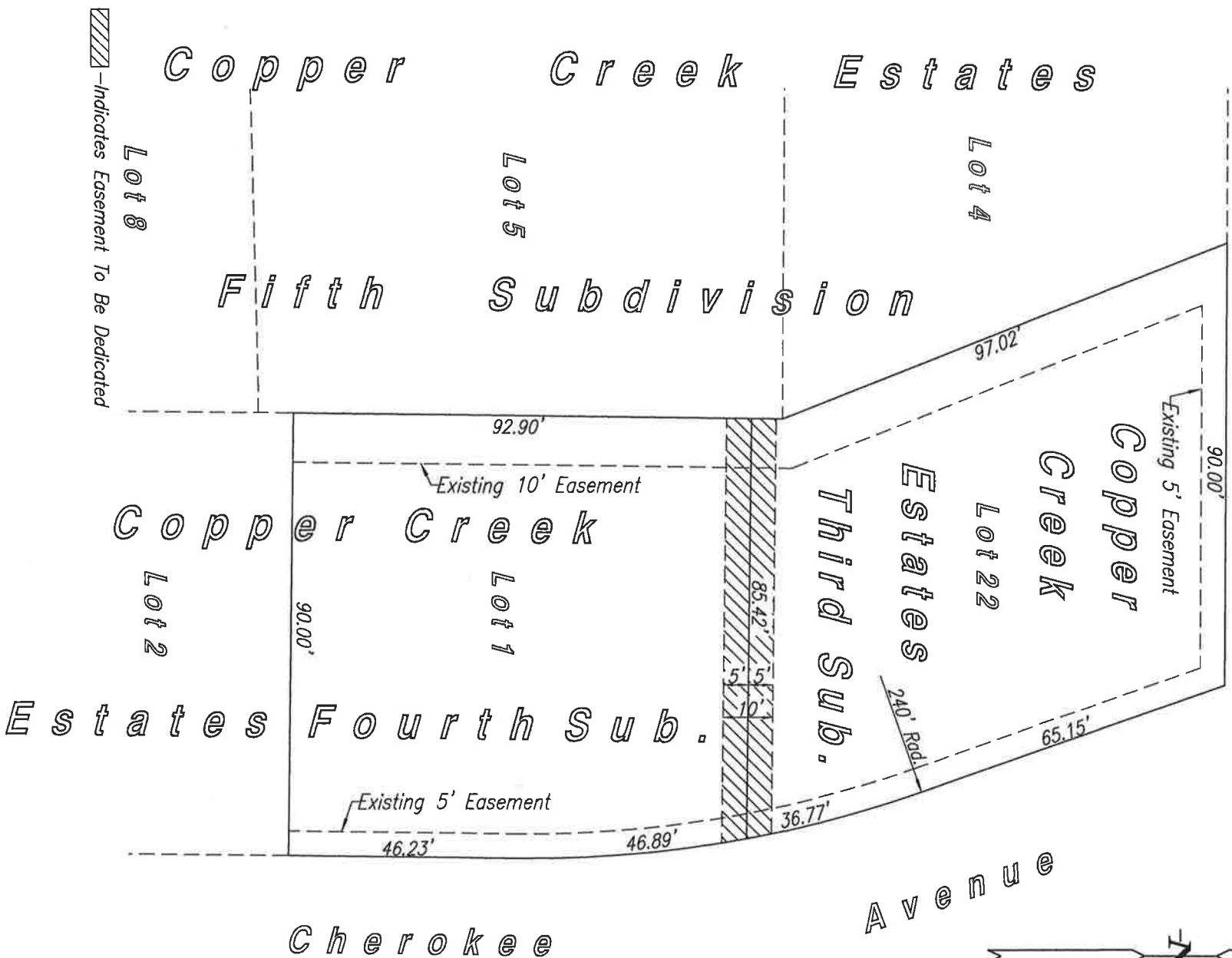
Sheet No. 1 of 1



R. G. K. W. E. L. L. AND ASSOC. ENGINEERING & SURVEYING

2510 NORTH WEBB ROAD, GRAND ISLAND, NEBRASKA 68802 P.O. BOX 549  
E-MAIL: surveyor@cccausa.net PHONE (308) 382-1472 FAX (308) 382-1423

Daisy Circle



**Description (10' Wide Drainage Easement)**

A Ten (10.00) foot wide tract of land comprising the southerly Five (5.00) feet of Lot Twenty Two (22), Copper Creek Estates Third Subdivision and the Northerly Five (5.00) feet of Lot One (1), Copper Creek Estates Fourth Subdivision, all in the City of Grand Island, Nebraska, said tract containing 0.020 acres (854 Sq. Ft.) more or less.

**Exhibit 'A'**