



City of Grand Island

Tuesday, September 24, 2013

Council Session

Item E-4

Public Hearing on Acquisition of Public Utility Easement in Sterling Estates Second Subdivision (TS12, LLC)

Staff Contact: John Collins, P.E. - Public Works Director

Council Agenda Memo

From: Terry Brown PE, Manager of Engineering Services

Meeting: September 24, 2013

Subject: Public Hearing on Acquisition of Public Utility Easement in Sterling Estates Second Subdivision (TS12, LLC)

Item #'s: E-4, F-3 & G-16

Presenter(s): John Collins PE, Public Works Director

Background

Nebraska State Statutes stipulate that the acquisition of property requires a public hearing to be conducted with the acquisition approved by the City Council. A public utility easement needs to be relocated in the Sterling Estates Subdivision as a result of the construction of additional garages for the apartment complex. The easement will allow for the construction, operation, maintenance, extension, repair, replacement, and removal of public utilities within the easement.

Discussion

To allow for the building of additional garages for the Sterling Estates Apartment Complex it has been requested that the existing twenty-five (25) foot wide utility easements be relocated further east. Vacation of such easements is being presented for Council approval at tonight's meeting. The new easements will be eight (8) feet wide, as shown on the attached drawing.

Alternatives

It appears that the Council has the following alternatives concerning the issue at hand. The Council may:

1. Move to approve
2. Refer the issue to a Committee
3. Postpone the issue to future date
4. Take no action on the issue

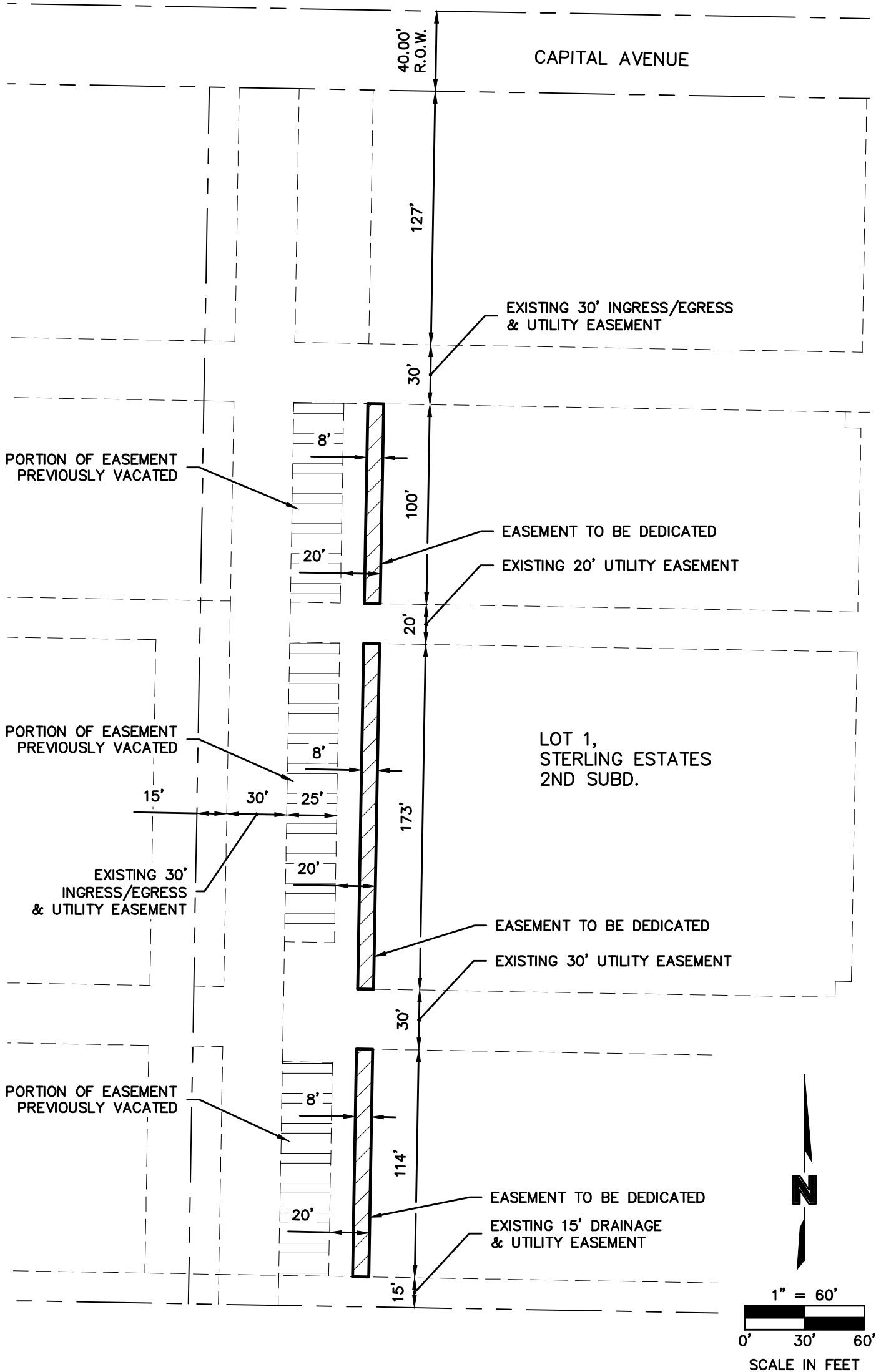
Recommendation

City Administration recommends that the Council conduct a Public Hearing and approve acquisition of the utility easements in Sterling Estates Subdivision.

Sample Motion

Move to approve the acquisition of the utility easements in Sterling Estates Subdivision.

EASEMENT DEDICATION



DWG: F:\projects\012-1026_Plan\Final_Plat\0121026_EASE-DEDICATE.dwg
 DATE: Sep 04, 2013 12:50pm
 USER: zloomis
 XREFS: 0121026_ROW

OLSSON
 ASSOCIATES

201 East 2nd Street
 P.O. Box 1072
 Grand Island, NE 68802-1072
 TEL 308.384.8750
 FAX 308.384.8752