



City of Grand Island

Tuesday, January 22, 2013

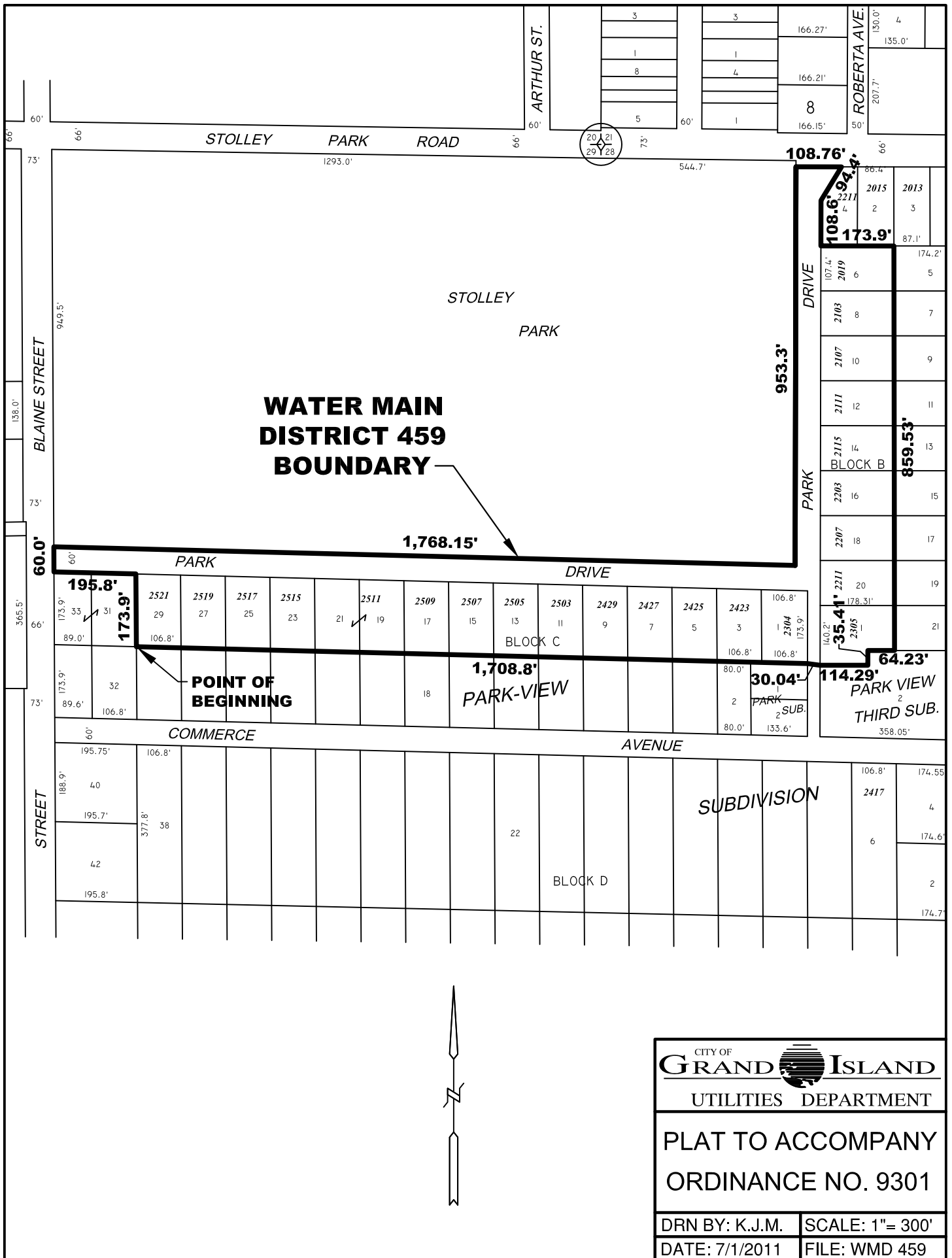
Council Session

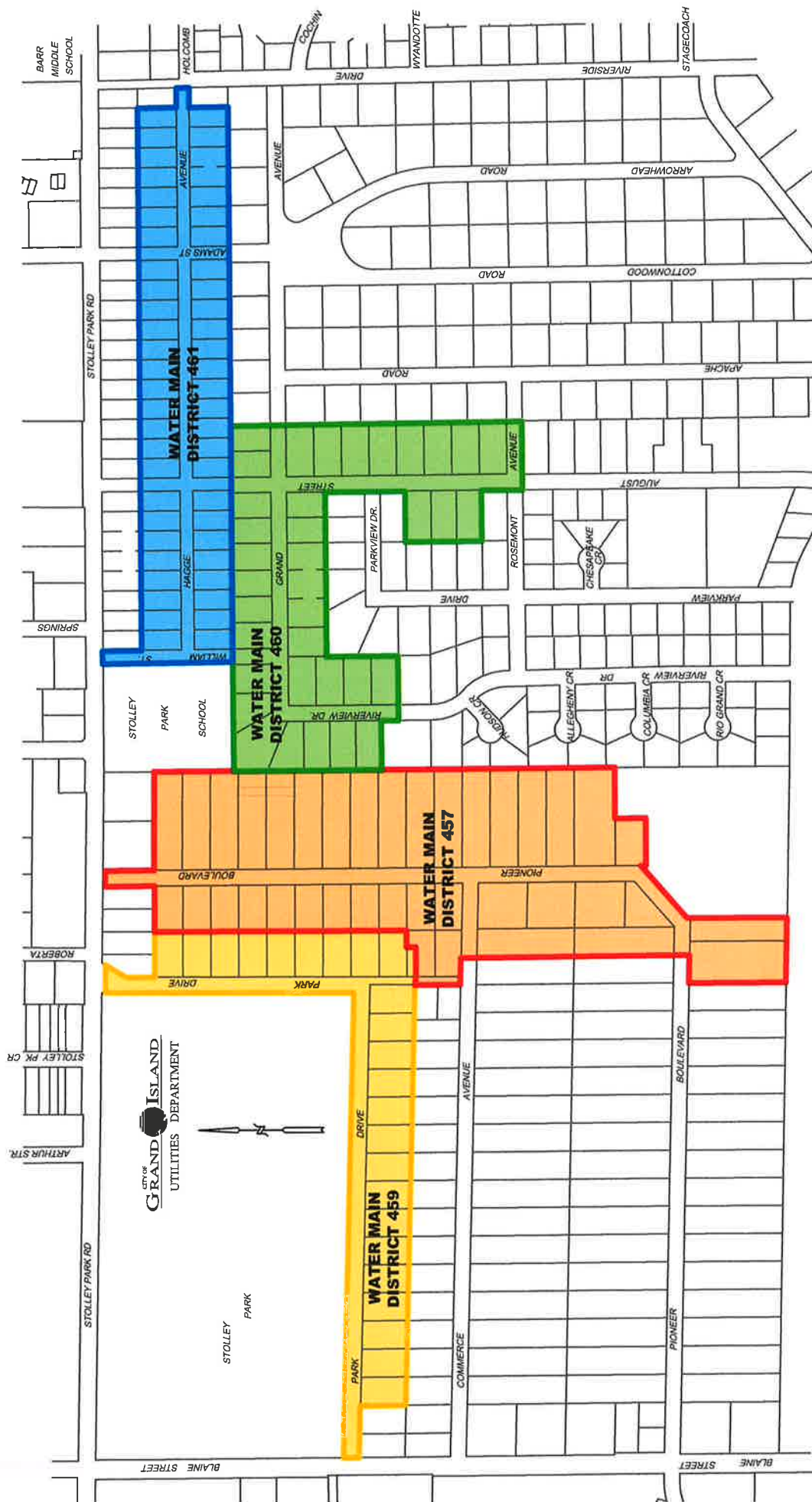
Item D2

#2013-BE-2 - Board of Equalization Hearing for Water Main District 459 - Park Drive

This item relates to the aforementioned Board of Equalization item D-1.

Staff Contact: Tim Luchsinger, Robert Sivick





RESOLUTION 2013-BE-2

BE IT RESOLVED BY THE MAYOR AND COUNCIL OF THE CITY OF GRAND ISLAND, NEBRASKA, sitting as a Board of Equalization for Water Main District 459, after due notice having been given thereof, that we find and adjudge:

That the benefits accruing to the real estate in such district to be the total sum of \$163,313.80; and

Such benefits are equal and uniform; and

According to the equivalent frontage of the respective lots, tracts, and real estate within such Water Main District No. 459, such benefits are the sums set opposite the several descriptions as follows:

Name	Description	Assessment
Robert L. & Roxanne L. Lathen	Lot 29, Block C, Park-View Subdivision	\$7,100.60
Donald P. & Patricia D. Whelan	Lot 27, Block C, Park-View Subdivision	\$7,100.60
Douglas A. & Cheryl A. Ward	Lot 25, Block C, Park-View Subdivision	\$7,100.60
Steven R. & Mary M. Mettenbrink	Lot 23, Block C, Park-View Subdivision	\$7,100.60
Brian J. & Lisa C. Degen	Lots 19 and 21, Block C Park-View Subdivision	\$7,100.60
Jeanne E. Williams	Lot 17, Block C, Park-View Subdivision	\$7,100.60
K & B Aircraft Leasing Services, Inc.	Lot 15, Block C, Park-View Subdivision	\$7,100.60
Donald A. & Cheri A. Schwieger	Lot 13, Block C, Park-View Subdivision	\$7,100.60
Leslie Dean & Teresita V. Westover	Lot 11, Block C, Park-View Subdivision	\$7,100.60
Greg S. & Angela M. Lehechka	Lot 9, Block C, Park-View Subdivision	\$7,100.60
Chad L. & Leslie M. Smith	Lot 7, Block C, Park-View Subdivision	\$7,100.60
George H. & Kathryn L. Ferris	Lot 5, Block C, Park-View Subdivision	\$7,100.60
Earl K. & Lazetta J. Barnes	Lot 3, Block C, Park-View Subdivision	\$7,100.60
Timothy R. & Beverly Jo Plummer	Lot 1, Block C, Park-View Subdivision	\$7,100.60
Luther S. & Stephanie M. Allen	Lot 1, Park View 3 rd Subdivision	\$7,100.60
Virgil D. & Lois M. Melsen	Lot 20, Block B, Park-View Subdivision	\$7,100.60
Evalyn M. Sorahan	Lot 18, Block B, Park-View Subdivision	\$7,100.60
Shirley M. Sterkel	Lot 16, Block B, Park-View Subdivision	\$7,100.60
Charles H. & Christine M. Hoffman	Lot 14, Block B, Park-View Subdivision	\$7,100.60
Steven R. & Tracy M. Eisenmann	Lot 12, Block B, Park-View Subdivision	\$7,100.60
Roger Charles Brown	Lot 10, Block B, Park-View Subdivision	\$7,100.60
Krishna C. Bosselman	Lot 8, Block B, Park-View Subdivision	\$7,100.60
Henry N. & Carol A. Yencer	Lot 6, Block B, Park-View Subdivision	\$7,100.60
TOTAL		\$163,313.80

Approved as to Form ☐ _____

January 18, 2013 ☐ City Attorney

R E S O L U T I O N 2013-BE-2 (Cont.)

Adopted by the City Council of the City of Grand Island, Nebraska, on January 22, 2013.

Jay Vavricek, Mayor

Attest:

RaNae Edwards, City Clerk