



# City of Grand Island

Tuesday, July 12, 2022

Council Session

## Item G-6

**#2022-170 - Approving Acquisition of Utility Easement - 3212 S. Locust St (Bosselman, Inc.)**

*This item relates to the aforementioned Public Hearing item E-2.*

Staff Contact: Tim Luchsinger, Stacy Nonhof

RESOLUTION 2022-170

WHEREAS, a public utility easement is required by the City of Grand Island from Bosselman, Inc., to survey, construct, inspect, maintain, repair, replace, relocate, extend, remove, and operate thereon, public utilities and appurtenances, including power lines; and

WHEREAS, a public hearing was held on July 12, 2022, for the purpose of discussing the proposed acquisition of a permanent and perpetual easement and right-of-way tract located through a part of Lot Eight (8), Woodland Second Subdivision, in the City of Grand Island, Hall County, Nebraska, the fifteen (15.0) by fifteen (15.0) foot wide utility easement and right-of-way tract being more particularly described as follows:

The southerly fifteen (15.0) of the westerly fifteen (15.0) feet of Lot Eight (8), Woodland Second Subdivision, in the City of Grand Island, Hall County, Nebraska.

The above-described easement and right-of-way containing a total of 225 square feet or .005 acres, more or less as shown on the plat dated 6/15/2022, marked Exhibit "A", attached hereto and incorporated herein by reference.

NOW, THEREFORE, BE IT RESOLVED BY THE MAYOR AND COUNCIL OF THE CITY OF GRAND ISLAND, NEBRASKA, that the City of Grand Island be, and hereby is, authorized to acquire a public utility easement from Bosselman, Inc., on the above-described tract of land.

- - -

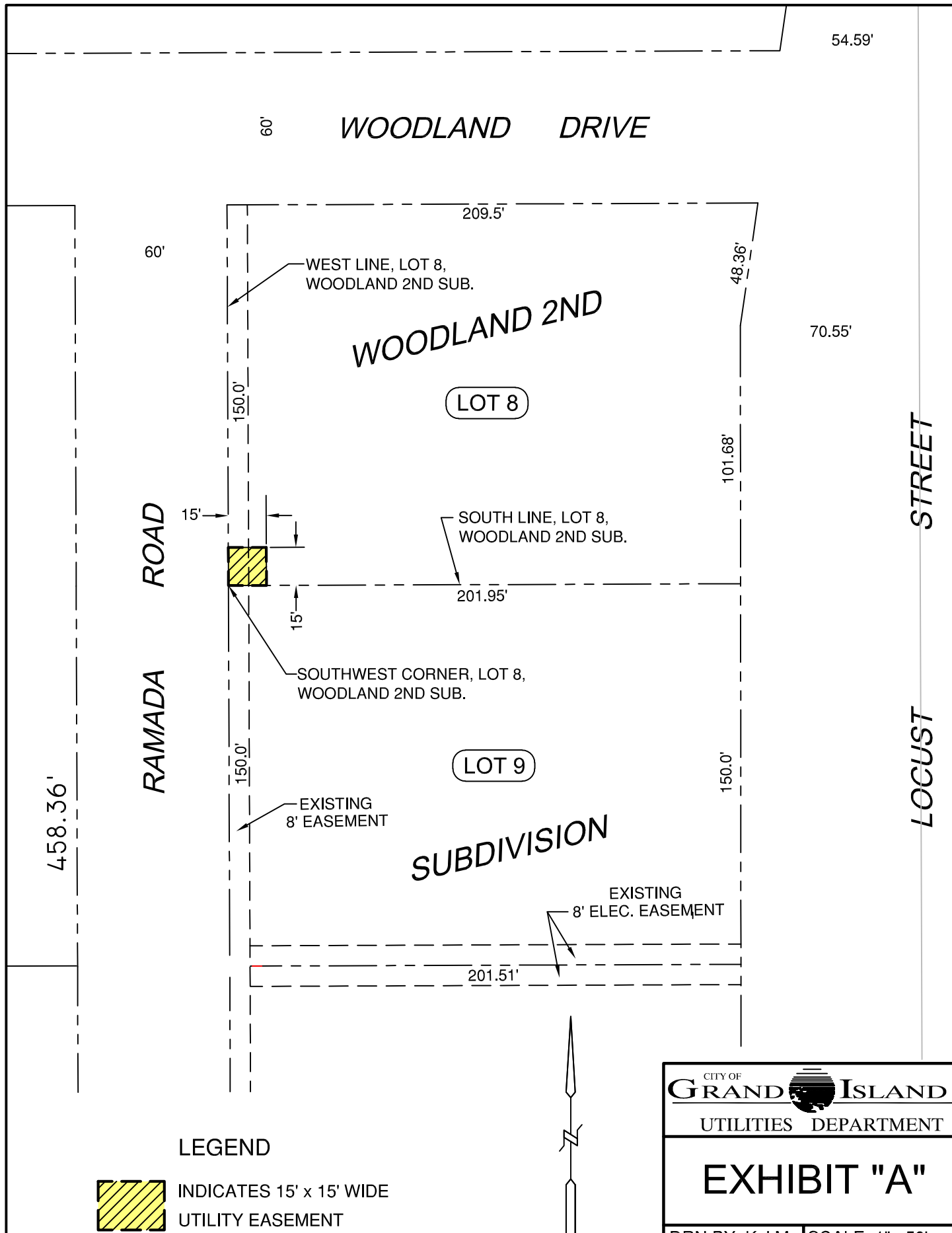
Adopted by the City Council of the City of Grand Island, Nebraska, July 12, 2022.

\_\_\_\_\_  
Roger G. Steele, Mayor

Attest:

\_\_\_\_\_  
RaNae Edwards, City Clerk

Approved as to Form	☒ _____
July 11, 2022	☒ City Attorney



**LEGEND**



INDICATES 15' x 15' WIDE  
UTILITY EASEMENT

CITY OF  
**GRAND ISLAND**  
UTILITIES DEPARTMENT

**EXHIBIT "A"**

DATE: 6/15/2022 | FILE: WOODLAND