



Community Redevelopment Authority (CRA)

**Wednesday, July 14, 2021
Regular Meeting**

Item G2

40 North Tap and Grille Request

Staff Contact:



Jay Vavricek <jvavricek@40northtapandgrille.com>

CRA amended request & a reply (40 North Tap + Grille)

1 message

Jay Vavricek <jvavricek@40northtapandgrille.com>
To: Chad Nabity <chadn@grand-island.com>

Tue, Jul 6, 2021 at 8:15 PM

Chad,

After thinking this through some more, it's probably best to remove my funding request for the additional greenspace improvements near 40 North Tap + Grille.

Those improvements are dependent upon a multi layer of approvals, yet undetermined and this request should probably reflect a more unified approach for all of Downtown.

So remove the funding request for the trees and streetscape. Any available taxpayer CRA funds may be better suited to other considerations.

As for the touchless door funding request, consider its merit as a facade improvement. The improvement would be installed in an existing door to the 40 North patio. The door itself will not be replaced. Only the apparatus for it to open from either side will be added.


I will provide the board with its overview as provided to me from Island Glass. Once installed, Middleton Electric will install the necessary means to operate it.

I was quoted \$4,000 from Island Glass for the additional no touch apparatus, the installation of wiring and electricity, I estimate would not exceed \$1,000... anything over that amount would be at my expense.

Please extend to the board's consideration this request... an investment not to exceed in a \$5,000 facade grant for this improvement. Subsequent validation of the expenses to follow upon completion.

Thank you,

Respectfully,



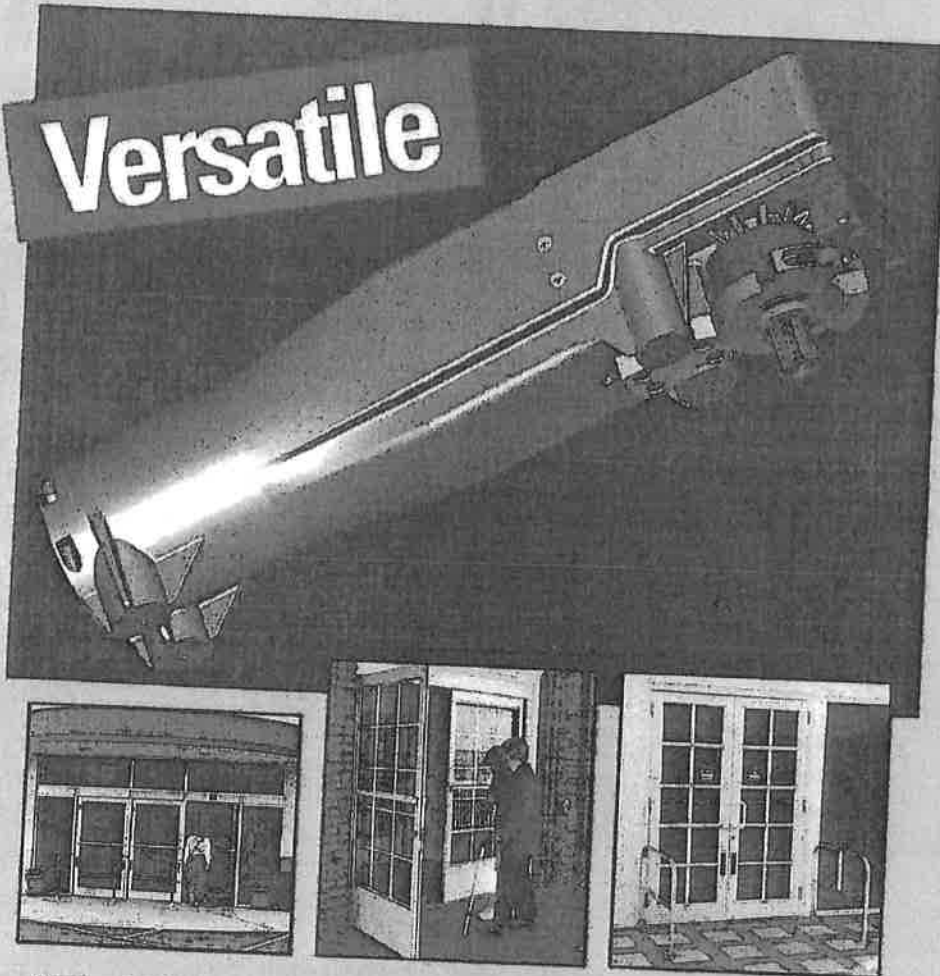
Jay Vavricek
40 North Tap + Grille
520 West 3rd Street
Grand Island, Nebraska 68801

308-380-4913

STANLEY®

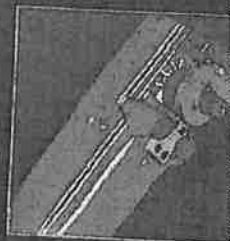
Magic-Force™ Operator

Versatile



Stanley's Magic-Force™ Operator works in both Full Energy and Low Energy applications. Meets the demands for use in Supermarkets, Department Stores, Hospitals, Airports, Office Buildings, Public Buildings, Schools, Universities and more!

- Adjustable force for Full Energy and Low Energy applications.
- Innovative design provides easy opening and positive closing.
- Door will act as a manual closer without power applied.
- The Magic-Force™ Operator is designed for impressively quiet performance.
- This versatile operator can be used for right-hand or left-hand doors.
- Simplified installation and service.



VERSATILE

- Non-handed
- In or Out Swing
- Concealed or Visible
- Full or Low Energy



ADJUSTABLE

- Variable Spring Force
- Adjustable Closing Speed
- Adjustable Open Stop



CONTROL

- Microprocessor Controlled
- Consistent Cycle
- Controlled Motion



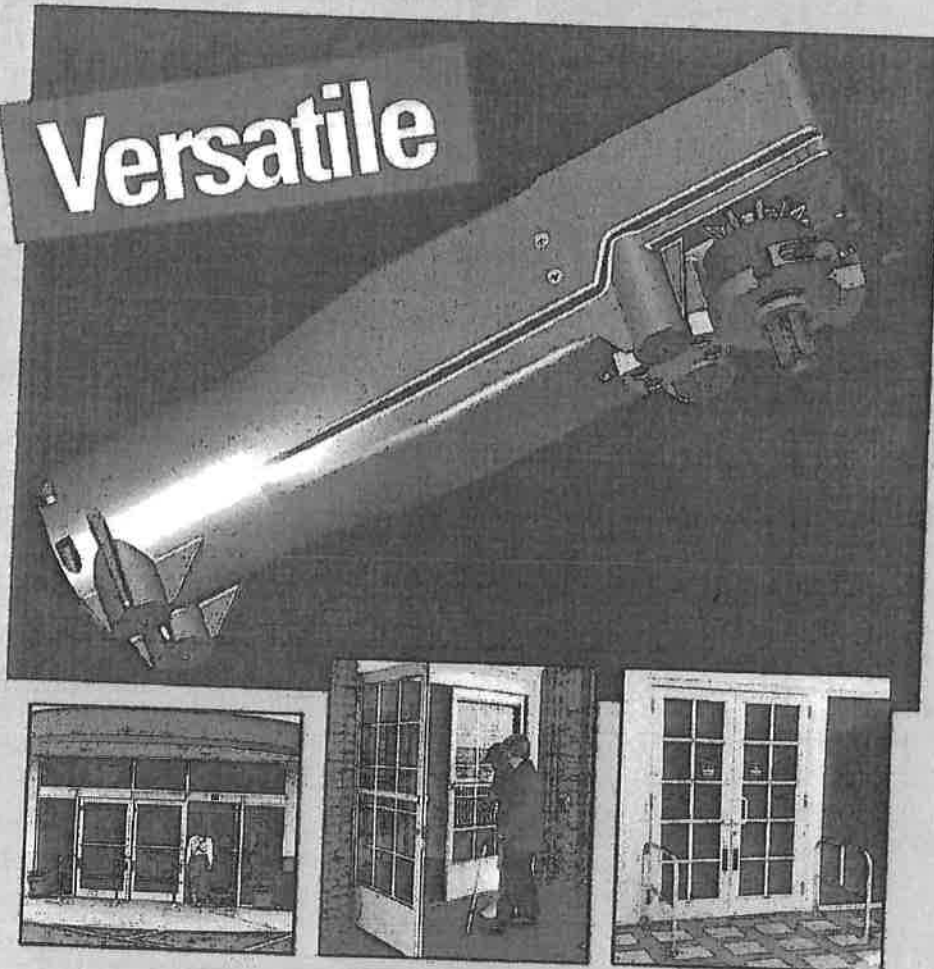
COMPACT POWER

- Innovative Gear System
- Heavy Duty
- Durable

STANLEY®

Magic-Force™ Operator

Versatile



Stanley's Magic-Force™ Operator works in both Full Energy and Low Energy applications. Meets the demands for use in Supermarkets, Department Stores, Hospitals, Airports, Office Buildings, Public Buildings, Schools, Universities and more!

- Adjustable force for Full Energy and Low Energy applications.
- Innovative design provides easy opening and positive closing.
- Door will act as a manual closer without power applied.
- The Magic-Force™ Operator is designed for impressively quiet performance.
- This versatile operator can be used for right-hand or left-hand doors.
- Simplified installation and service.



VERSATILE

- Non-handed
- In or Out Swing
- Concealed or Visible
- Full or Low Energy



ADJUSTABLE

- Variable Spring Force
- Adjustable Closing Speed
- Adjustable Open Stop



CONTROL

- Microprocessor Controlled
- Consistent Cycle
- Controlled Motion



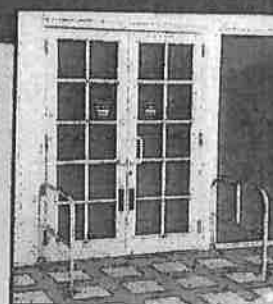
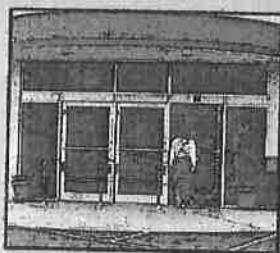
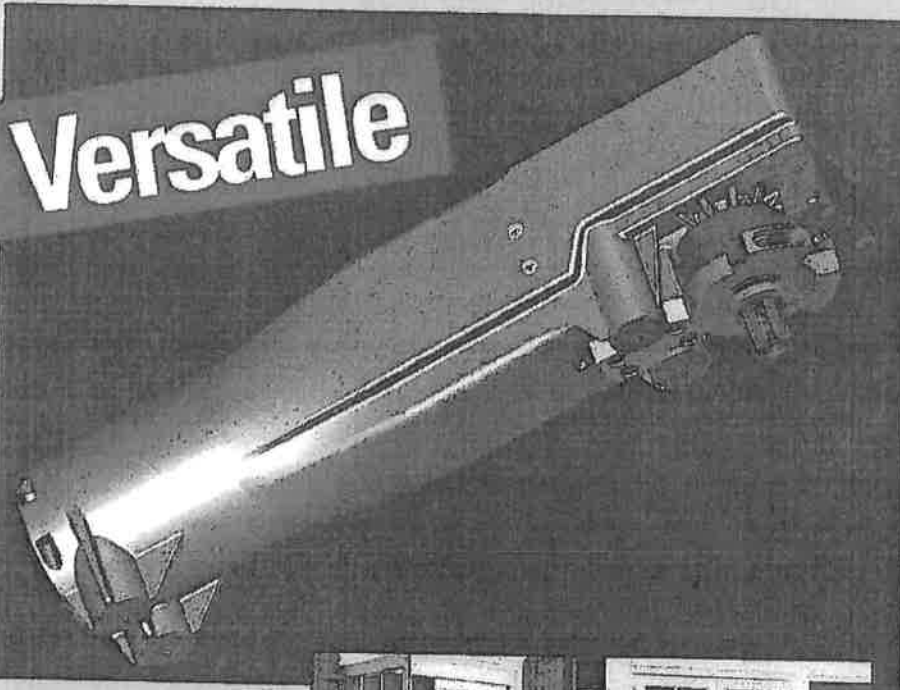
COMPACT POWER

- Innovative Gear System
- Heavy Duty
- Durable

STANLEY®

Magic-Force™ Operator

Versatile



*Stanley's Magic-Force™ Operator works in both Full Energy and Low Energy applications.
Meets the demands for use in Supermarkets, Department Stores, Hospitals, Airports,
Office Buildings, Public Buildings, Schools, Universities and more!*

- Adjustable force for Full Energy and Low Energy applications.
- Innovative design provides easy opening and positive closing.
- Door will act as a manual closer without power applied.
- The Magic-Force™ Operator is designed for impressively quiet performance.
- This versatile operator can be used for right-hand or left-hand doors.
- Simplified installation and service.



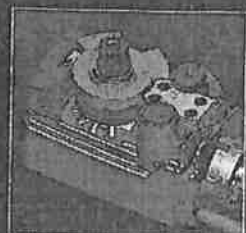
VERSATILE

- Non-handed
- In or Out Swing
- Concealed or Visible
- Full or Low Energy



ADJUSTABLE

- Variable Spring Force
- Adjustable Closing Speed
- Adjustable Open Stop



CONTROL

- Microprocessor Controlled
- Consistent Cycle
- Controlled Motion

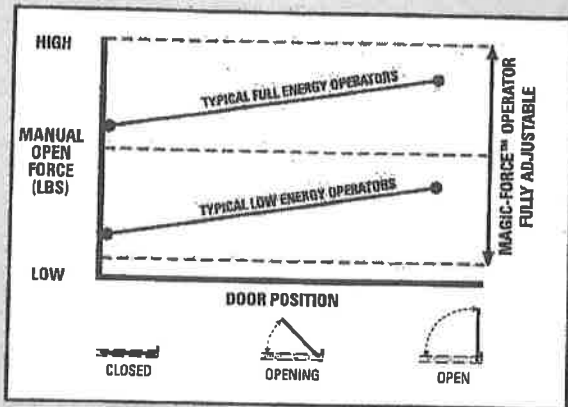


COMPACT POWER

- Innovative Gear System
- Heavy Duty
- Durable

STANLEY

Magic-Force™ Operator



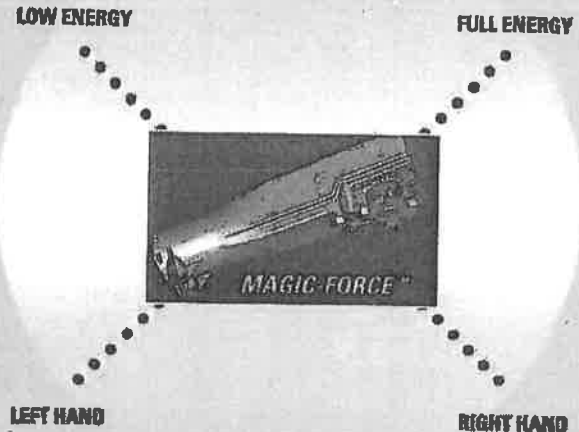
The Magic-Force™ delivers consistent opening force. Fully field adjustable to meet specific site conditions. Easy opening with a powerful close. Patent pending.

FEATURES & BENEFITS:

- **Full Energy/Low Energy Capable** — The Magic-Force™ Operator design accommodates both full energy and low energy code requirements.
- **Non-Handed Operator** — This versatile operator can be used for right hand or left hand doors with minimal field adjustments. Allows for easy installation. In addition fewer parts are needed for a broad range of applications.
- **Quiet Running Operation** — Low noise level is a must! The Magic-Force™ operator is designed for impressively quiet performance.
- **Consistent Cycle** — Stanley's innovative design provides easy opening and positive closing under diverse conditions.
- **Return From Breakout With Controlled Speed** — Door automatically resets after breakout. Manual reset not required. In addition, the door will not slam to the closed position after breakout.
- **Manual Operation** — Door will act as a manual closer without power applied. Important when used in ADA applications.



ALL-IN-ONE Retrofittable Package



- **Microprocessor Controlled** — The advanced control box is highly versatile.

- **Cycle Counter** — Counter is ideal for preventative maintenance program scheduling and can be used for warranty calculations.

Controls and Adjustments

Power Opening Force:

Torque adjustment able to accommodate the Full Energy/Low Energy ANSI code requirements.

Closing Force:

Field Adjustable Spring

Open Speed, Close Speed, Open Check Speed:

Potentiometer Adjustable

Manual Opening Force:

Field Adjustable Spring allows this operator to accommodate the Full Energy/Low Energy ANSI code requirements.

SPECIFICATIONS:

- **Size** — 4 5/8" (117.48mm) x 3 3/4" (95.25mm) x 18" (457.2mm)
- **Door Weight** — Up to 350 lbs (158.7kg)
- **Code Compliance** — tIL, cUL, ANSI A158.19, ANSI A158.10, NFPA 101, BOCA

The Stanley Works
Access Technologies Product Group

Customer Care: 1-800-7-ACCESS (1-800-722-2377)

<http://www.stanleyworks.com>

©2002 Access Technologies Printed in U.S.A. AT 0301 2/02