
Library Board

Monday, July 19, 2021

Regular Meeting

Item C1

Approval of Director's Report

The Director's Report typically consists of:

- 1) a monthly report of programs and activities, public use of meeting spaces, library media, and Librarians' Reports*
- 2) a quarterly Report of Household Library Cards Issued to Hall County Residents Outside of Grand Island provided in January, April, July and October of each year*
- 3) a quarterly statistical usage report provided in February, May, August and November of each year*
- 4) upon execution of agreement, regularly scheduled report of use of Grand Island Public Library Foundation library support funds*
- 5) upon publication, a Library newsletter*
- 6) and additional administrative items of note, either in the agenda packet or discussed at the meeting.*

Staff Contact:

Library Director

Name: Celine Swan

Date: July 2021

Since Last Report

June-Current

- RFP for HVAC for Architect for this Capital Project-bid chosen from Jerry's Sheet Metal for HVAC construction. It goes to City Council on July 27
- RFP for ILS-Integrated Library System Software-August 9 we will be CLOSED. TLC goes live August 10 before we open.
- Update on Pioneer Consortium
- Virtual Report
- Media Report
- Library Utility Insert
- Hall County Head of Household Quarterly Report
- Crane Art Update and Dedication
- Library Foundation Work: 295 funds, Peter Kiewit update, on signage approved and Love's will install by the end of the month, 6 monitors-working on electronics with city IT and Jeremy, Early Literacy Outdoor Discovery Center learning centers ordered, coming in 3-5 weeks and will be installed.

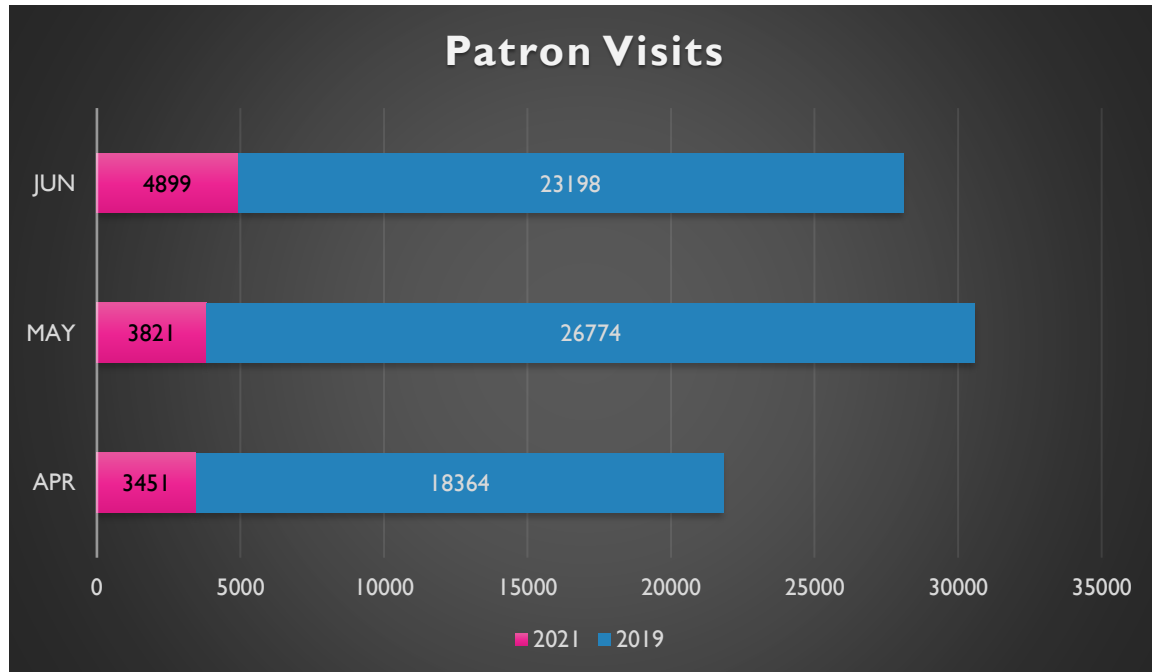
Upcoming-Library work

- Peter Kiewit-future projects-electronic needs
- IT planning-Capital Project to replace computers, selfcheckouts, and printers,
- Presentation with VA Admirals, Meeting with Children's Museum Board, H3C groups
- Partner with Hall County Historical Society on Heritage Hour, and Bygone Hall County Book Club partnership promotion in September, Quarterly Open House with other groups such as Stuhr, PPGS, DAR Chapter, Historical Society in the works. Would like to do on Sundays
- Fall PrimeTime School Preschool Saturdays, Sept 11, 18, 25, Oct 2, 9, 16 and PrimeTime for School Age Monday nights, Sept 20, 27, Oct 4, 11, 18, 25
- ARPA-American Rescue Plan Act Grant-I filled out the grant and we will receive \$17,848.
- Racial Justice 101-YWCA training for Library Staff paid for by H3C since the library is a member it is free for staff (Board and Foundation and some staff July 22 4-5:30 pm)
- Outdoor Early Literacy Center Open House-we would like to do in late summer/early fall with music, storybook walk, music-patrons bring chairs
- Interlocal agreement with Hall County
- Discussion of the library's hours

GRAND ISLAND PUBLIC LIBRARY

JUNE 2021 STATS OVERVIEW & COMPARISON

PATRON VISITS – PREVIOUS THREE MONTHS

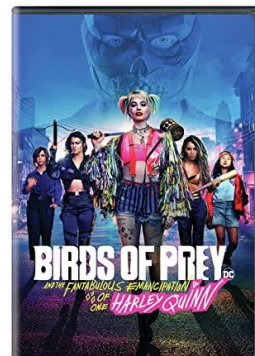
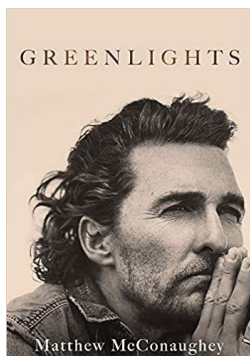


*Methods for collecting visits was changed from security gate counter, which was believed to be inaccurate, to collecting counts based on security camera entry/exit data in 2020,

MOST POPULAR ITEMS – JAN. 2021 TO PRESENT

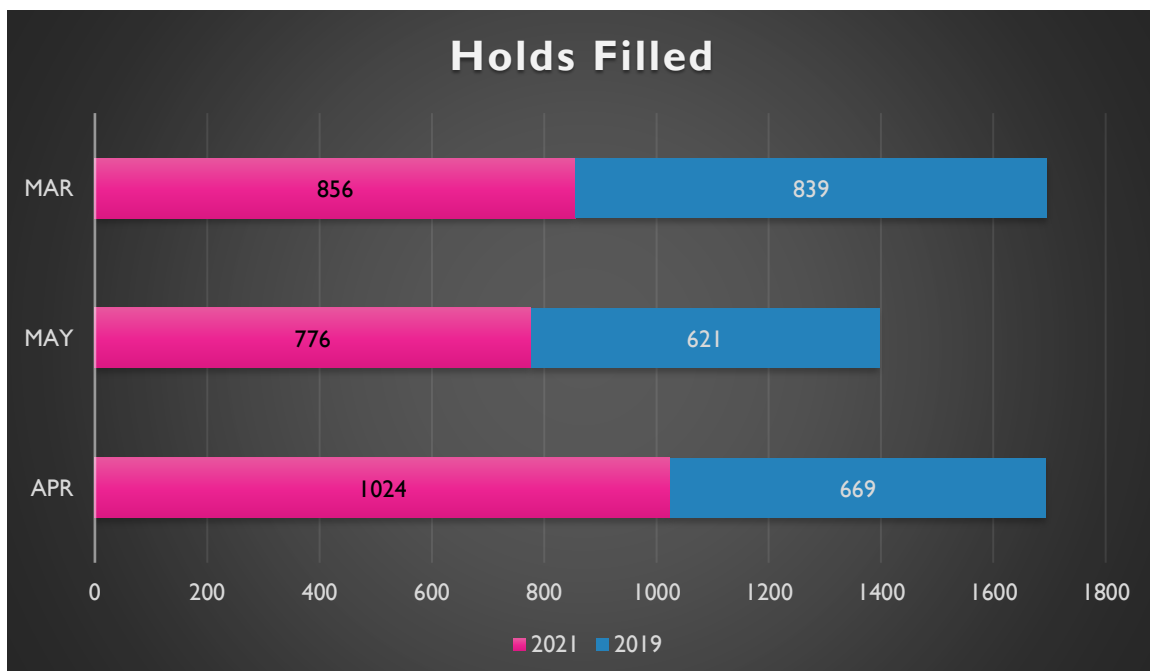
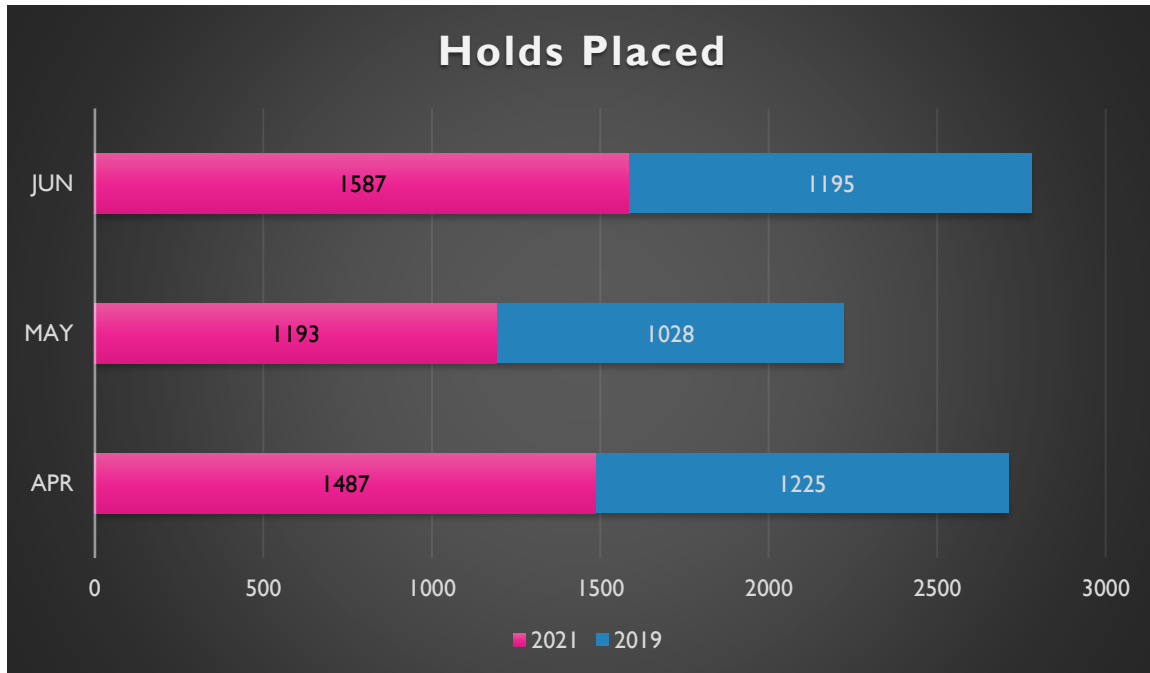
BOOK (NEW RELEASE - NONFICTION)

DVD (NEW RELEASE)

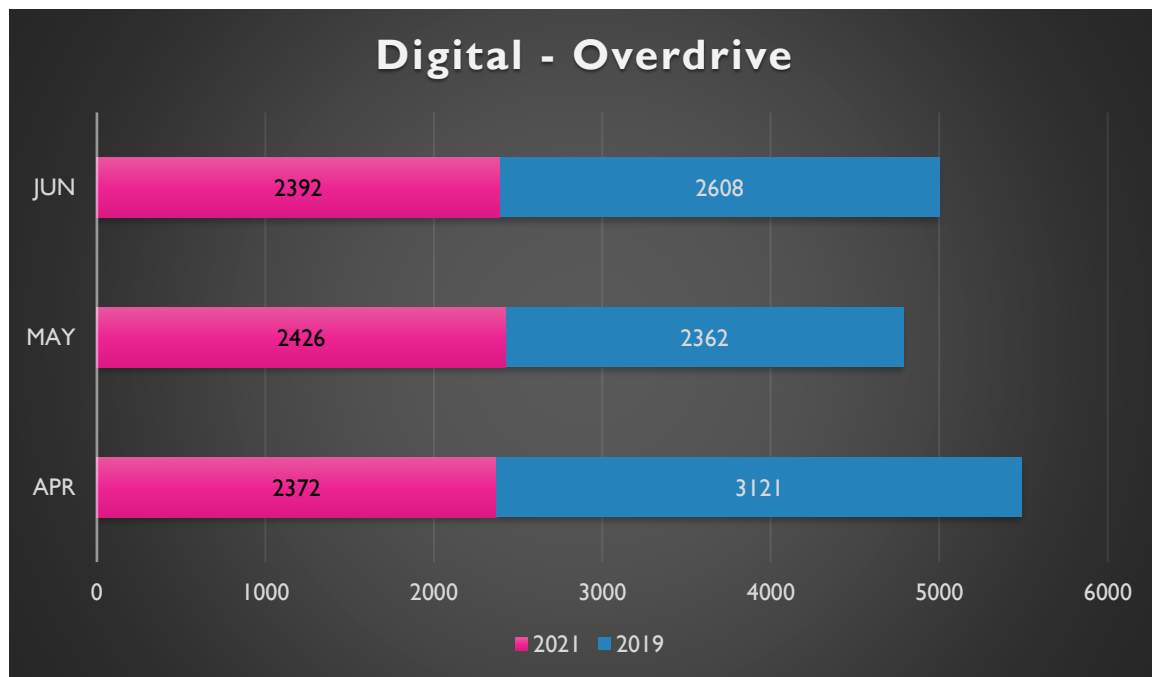
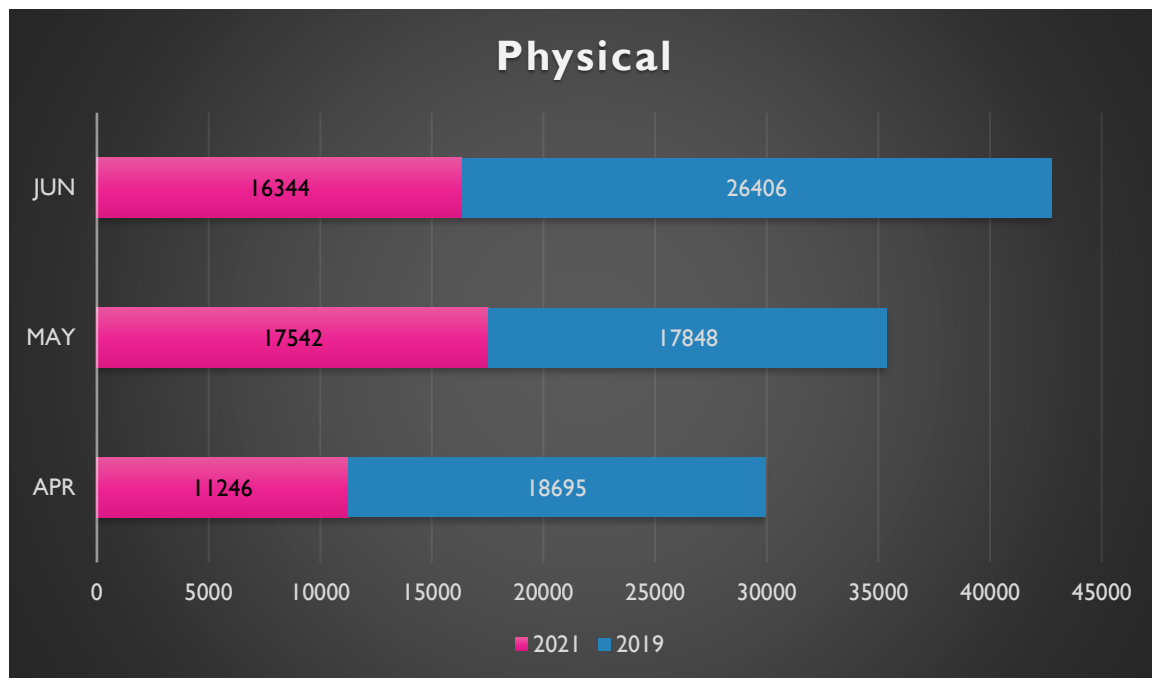


CIRCULATION

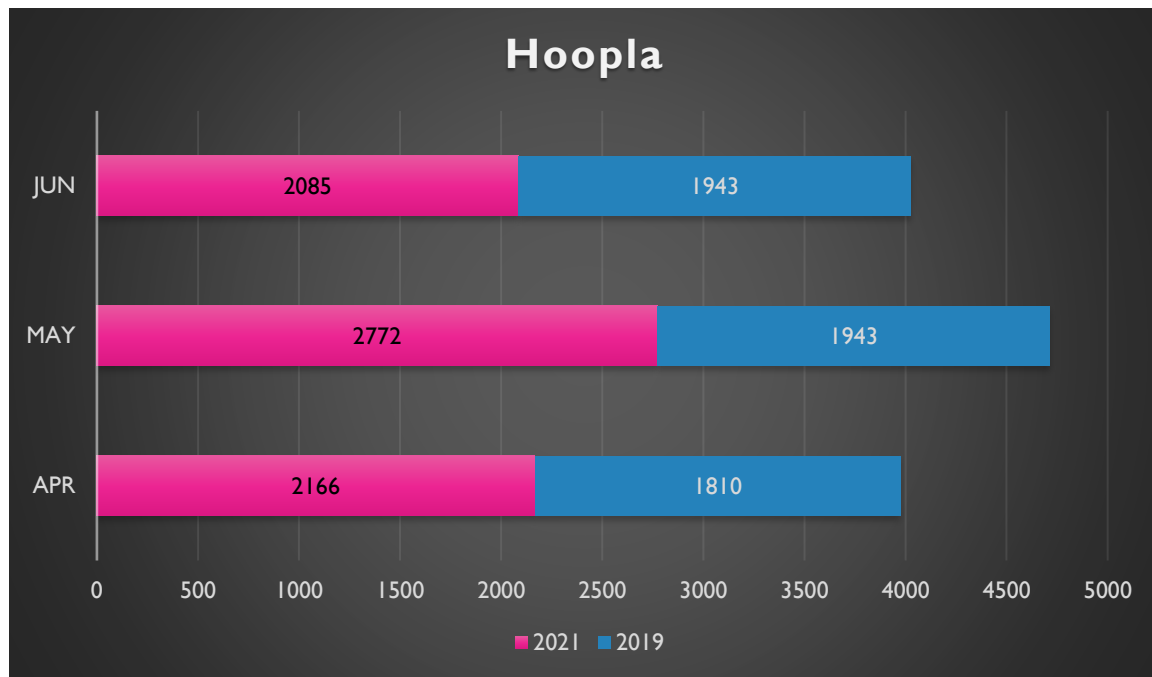
HOLDS PLACED



CHECKOUTS



*2019 numbers include Checkouts from RBdigital/Zinio; that service was acquired and absorbed into Overdrive in Fall 2020.



*Hoopla provided *Bonus Borrows* for the month of May 2021—The Bonus Borrows program allows patrons to checkout titles in the Bonus Borrows collection above the maximum 10 titles per month, and also does not charge GIPL for the circs of Bonus Borrows titles.

Youth & Family Services Librarian Monthly Report

Laura Fentress

July 2021

Since Last Report

Tails & Tales Summer Reading Program continues

As of July 16, on Beanstack we have

Program	Registrants	Active Readers (have logged any reading minutes)	Total Minutes	Total Badges Earned	Total Prizes Redeemed
Kids 0-11	452	444	305,261	2,536	971
Teens 12-18	92	70	98,859	367	202

- Kids' prizes include **State Fair passes**, **free meal coupons**, and **free books**
- Teens' prizes include **free meal coupons**, **free books**, and **bowling passes**
- Summer Reading minutes logging ends **July 31 at midnight**

SRP Grand Prizes

- Each badge earned counts as once chance to win a Grand Prize

For kids

- **Nintendo Switch Lite** with case, screen protector, and **Mario Kart 8**
- **Spring City** 4-month pass
- **Razor scooter**

For teens

- **Powerbeats Pro** wireless earphones
- **Kindle Fire 8** with case, screen protector, and extra charger
- **Amazon Echo Dot**

Regular Children's & Teens' Summer Programming continues

Virtual programming (June)

Program	Target Ages	Total Sessions	Total Views	Average Views Per Session
Checkers Library TV	Kids 0-5 Kids 6-11	4	120	30
Preschool Storytime with Brenda on Tuesdays	Kids 0-5	4	60	15
Baby & Toddler Lapsit with Elle and Laura on Wednesdays	Kids 0-5	4	40	10
TOTALS		12	220	18.3

In-person programming (updated numbers from June)

Weekly **teen craft & STEM programs** on Wednesdays (2 sessions each)

Date	Theme	Total Adults 19+	Total Teens 12-18	Total Kids 6-11	Total
June 9	Painting with Jill Canfield	3+3	13+19	0	38
June 16	Cricut iron-on t-shirt	4+3	10+12	0	29
June 23	Pottery with Nancy Fairbanks	3+4	15+14	0	36
June 30	Pneumatic machine & trigger launcher STEM project	3+3	12+14	0	32
July 7	Dreamcatcher craft	12+3	5+3	3+6	32
July 14	Cricut tumbler	3+4	10+10 (est.)	5+5 (est.)	37 (est.)

Big Kids Club with Lori on Thursdays

Date	Theme	Total Adults 19+	Total Kids 6-11	Total
June 10	Healthy Eating with Hall County Extension	3+2	3+2	10
June 17	Healthy Drinks with Hall County Extension	2+2	2+0	6
June 24	"Poop & Paws" Virtual Field Trip with UNL Morrill Hall	3+3	3+2	11
July 1	STEM copters & circuits	3+6	1+5	15
July 8	Recycled dog toy craft with Clean Community Systems	4+3	8+3	18
July 15	Mammal Wildlife Education Trunk with Nebraska Game and Parks	11+6	16+13	46

Outdoor Family Storytime on Saturdays in the new Early Literacy area

Date	Theme	Total Adults 19+	Total Teens 12-18	Total Kids 6-11	Total Kids 0-5	Total
June 12	Turtles	2	0	0	2	4
June 19	Pets	7	0	0	9	16
June 26	Pigeons	8	0	0	10	18
July 3	Fairy Tales	7	0	3	7	15
July 10	Sharks	3	1	3	3	10

Storytime & crafts with Parks & Rec Kinder Kamp on Mondays

Date	Theme	Location	Total Adults 19+	Total Kids 0-5	Total
June 14	Cinderella with Crane River Theater "Page to Stage"	Grace Abbott Park	100 (est.)	130 (est.)	230 (est.)
June 21	Aquarium Life	Grace Abbott Park	6	7	13
June 28	Fairy Tales	Stolley Park	5	10	15
July 6	Pets	George Park	4	6	10
July 12	Chameleons	Stolley Park	4	8	12

Special events

- **Teen Art Contest** began June 28; art show began July 1 and runs through July 31

Other events, etc.

Primetime Preschool

- Sessions 5 & 6 on June 19 & 26

Children's Area Changes

- **Awards shelf** moved next to Parent Talk; **Easy Readers** moved to former awards shelf; **Christmas books** moved from workroom to former Easy Readers shelf, available year-round
- **Multilingual books** shifted to moveable shelves on green wall

Early Literacy Area

- Plans finalized for **free-standing interactive panels**, including musical activities

Upcoming

Summer Reading

- **Pool party** for kids who read 500+ minutes at Lincoln Pool July 18

Programming

Primetime fall dates

- **Preschool** September 11, 18 25, October 2, 9, 16
- **Elementary** September 20, 27, October 4, 11, 18, 25



Virtual Programs

June	#of sessions	Craft bags	YouTube	Total Views	# of virtual programs = 4 Total views = 734
Baby & Toddler					
	4	0	40*2	80	
				80	
Tuesday Storytime					
	4	300	60 *2	120	
Reading Road Trip					
Checkers Library TV	4		120*2	240	
Adult					
Humanities NE			Zoom event	14	

Library Media Report

July 19, 2021 Report

Library Alive: Refresh Your Life at Your Library	6/13/2021	GI Independent
The Perfect Fit	6/15/2021	GI Independent
Area Youngsters Learn Moves at Crane River Theater's Cinderella	6/15/2021	GI Independent
Making a Difference: Volunteering at the Library is Something for Everyone	6/21/2021	GI Independent
Makerspace Making It's Coronavirus Comeback	6/24/2021	GI Independent
KRGi Interview	7/6/2021	KRGi
Library Alive: Coming Soon to Your Library	7/11/2021	GI Independent
Library Alive: Is the Book Always Better Than the Movie?	6/27/2021	GI Independent
GI Library Asking for Art Contest Submissions	7/7/2021	Local 4 News
GI Independent Club Calendar: Grand Island Admirals GI Port	7/15/2021	GI Independent
Teen Art Contest	7/15/2021	Local 4 News



Grand Island Library
1124 W 2ND ST
Grand Island, NE 68801
308.385.5333

Hours

Monday - Friday	9:30 A.M. - 6:00 P.M.
Saturday	9:30 A.M. - 1:00 P.M.
Sunday	CLOSED

NEW ONLINE CATALOG!



Our online catalog is getting a much needed upgrade! Starting August 9th the library will switch over to Library•Solution. We are super excited for all the new and improved features coming with this upgrade. Be on the look out for more information coming soon!

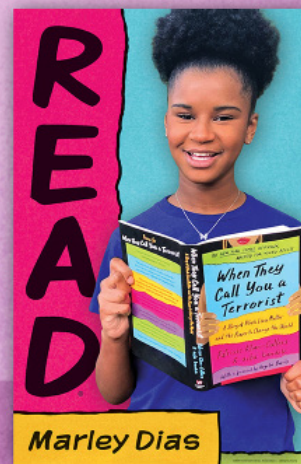
SEPTEMBER IS LIBRARY CARD SIGN-UP MONTH!

A library card is the **SMARTEST** card you can get! With a library card, you can check out all kinds of materials here at the Library: books, DVDs, magazines, e-books, and so much more! Need to use a computer? Borrow one of ours when you use your library card!

¡La tarjeta de la biblioteca es la tarjeta más **INTELIGENTE** que podrá tener! Con ella podrá sacar libros, películas, revistas, publicaciones digitales, ¡y mucho más! ¿Necesita imprimir un documento? ¡Con una tarjeta de la biblioteca podrá usar una de las computadoras!

SEPTEMBER IS LIBRARY CARD SIGN-UP MONTH.

Celebrate with
Honorary Chair
Marley Dias.



ALA American Library Association

Find
us on



@grandislandlibrary

You Tube



@gilibrary

Check out our
website!

www.gilibrary.org

Or give us a call!
308.385.5333

Grand Island Public Library



Strategic Planning Survey

**YOU
Speak**



**WE
Listen**

TELL US MORE!

Participate in the strategic plan by filling out an online or paper survey or by attending Library Listening Sessions.

Scan the QR code to take the survey.
or visit

<https://www.gilibrary.org/about-us/grand-island-strategic-planning>

Survey also available in:

Español

Soomaali

العربية

