



City of Grand Island

Tuesday, July 27, 2021

Council Session

Item G-7

#2021-170 - Approving Acquisition of Utility Easement at the Intersection of 18th Street & Illinois Avenue (Abandoned Blain Well Site) Luevano & Medrano

This item relates to the aforementioned Public Hearing item E-1.

Staff Contact: Tim Luchsinger, Stacy Nonhof

RESOLUTION 2021-170

WHEREAS, a public utility easement is required by the City of Grand Island from Alfredo Luevano, Jr. and Tina Marie Medrano, to survey, construct, inspect, maintain, repair, replace, relocate, extend, remove, and operate thereon, public utilities and appurtenances, including power and water lines; and

WHEREAS, a public hearing was held on July 27, 2021, for the purpose of discussing the proposed acquisition of a utility easement located through the entire boundary of Lot Seven (7), Block Two (2), Blain Addition to the City of Grand Island, Hall County, Nebraska, and more particularly described as follows:

The entire boundary of Lot Seven (7), Block Two (2), Blain Addition to the City of Grand Island, Hall County, Nebraska.

The above-described easement and right-of-way containing a total of 0.14 acres, more or less, as shown on the plat dated 5/10/2021, marked Exhibit "A", attached hereto and incorporated herein by reference.

NOW, THEREFORE, BE IT RESOLVED BY THE MAYOR AND COUNCIL OF THE CITY OF GRAND ISLAND, NEBRASKA, that the City of Grand Island be, and hereby is, authorized to acquire a public utility easement from Alfredo Luevano, Jr. and Tina Marie Medrano, on the above-described tract of land.

- - -

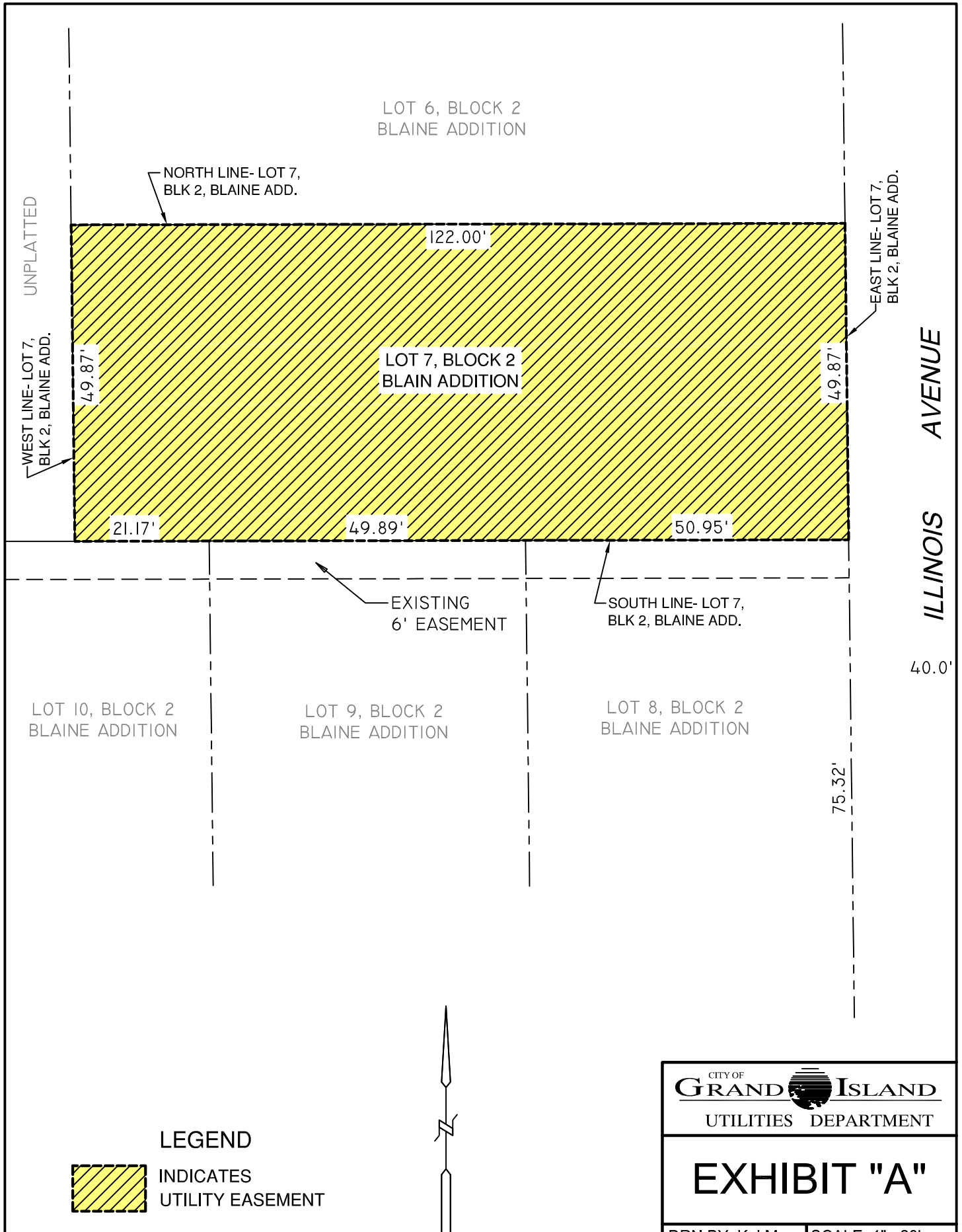
Adopted by the City Council of the City of Grand Island, Nebraska, July 27, 2021.

Roger G. Steele, Mayor

Attest:

RaNae Edwards, City Clerk

Approved as to Form ☒ _____
July 23, 2021 ☒ City Attorney



UNPLATTED
WEST LINE- LOT 7,
BLK 2, BLAINE ADD.

NORTH LINE- LOT 7,
BLK 2, BLAINE ADD.

LOT 6, BLOCK 2
BLAINE ADDITION

EAST LINE- LOT 7,
BLK 2, BLAINE ADD.

LOT 7, BLOCK 2
BLAIN ADDITION

ILLINOIS AVENUE

EXISTING
6' EASEMENT

SOUTH LINE- LOT 7,
BLK 2, BLAINE ADD.

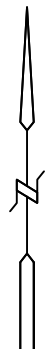
LOT 10, BLOCK 2
BLAINE ADDITION

LOT 9, BLOCK 2
BLAINE ADDITION

LOT 8, BLOCK 2
BLAINE ADDITION



LEGEND
INDICATES
UTILITY EASEMENT



CITY OF
GRAND ISLAND
UTILITIES DEPARTMENT

EXHIBIT "A"

DATE: 5/10/2021 | SCALE: 1"=20'