

---

# **Library Board**

## **Thursday, April 15, 2021**

### **Regular Meeting**

## **Item C1**

### **Approval of Director's Report**

*The Director's Report typically consists of:*

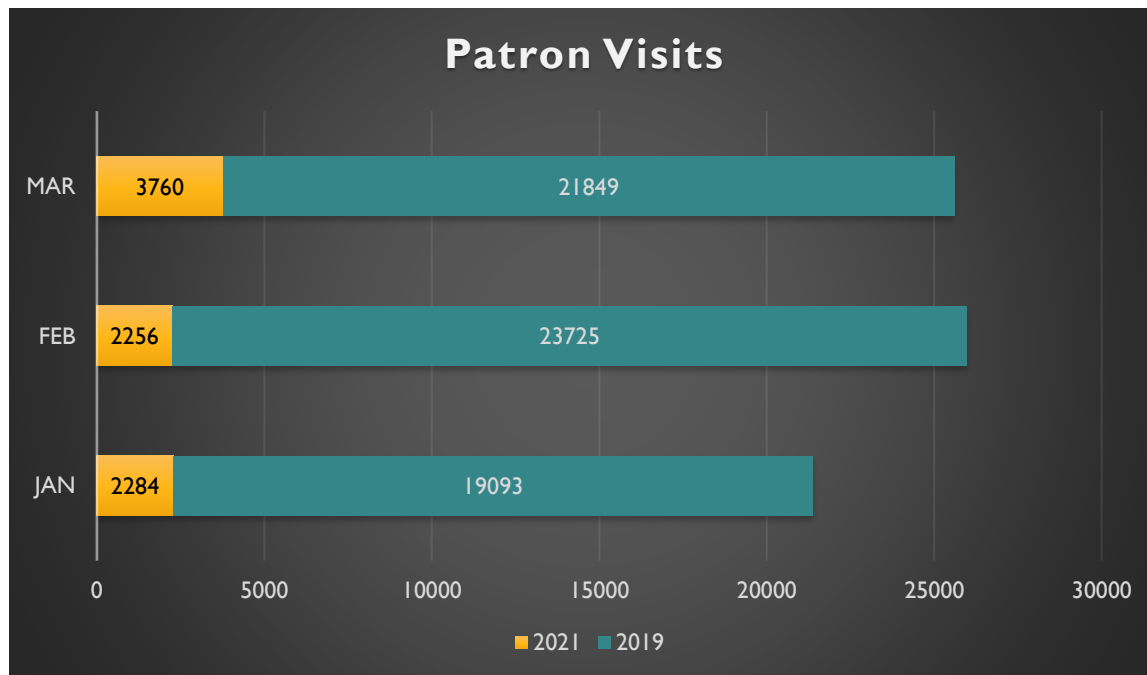
- 1) a monthly report of programs and activities, public use of meeting spaces, library media, and Librarians' Reports*
- 2) a quarterly Report of Household Library Cards Issued to Hall County Residents Outside of Grand Island provided in January, April, July and October of each year*
- 3) a quarterly statistical usage report provided in February, May, August and November of each year*
- 4) upon execution of agreement, regularly scheduled report of use of Grand Island Public Library Foundation library support funds*
- 5) upon publication, a Library newsletter*
- 6) and additional administrative items of note, either in the agenda packet or discussed at the meeting.*

**Staff Contact:**

# GRAND ISLAND PUBLIC LIBRARY

## MARCH 2021 STATS OVERVIEW & COMPARISON

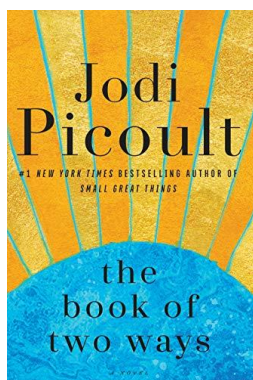
### PATRON VISITS – PREVIOUS THREE MONTHS



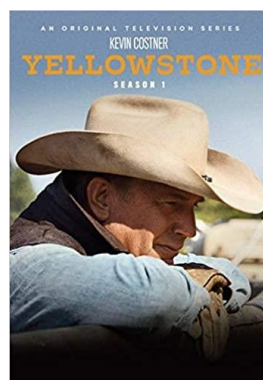
\*Methods for collecting visits was changed from security gate counter, which was believed to be inaccurate, to collecting counts based on security camera entry/exit data in 2020,

### MOST POPULAR ITEMS – JAN. 2021 TO PRESENT

#### BOOK

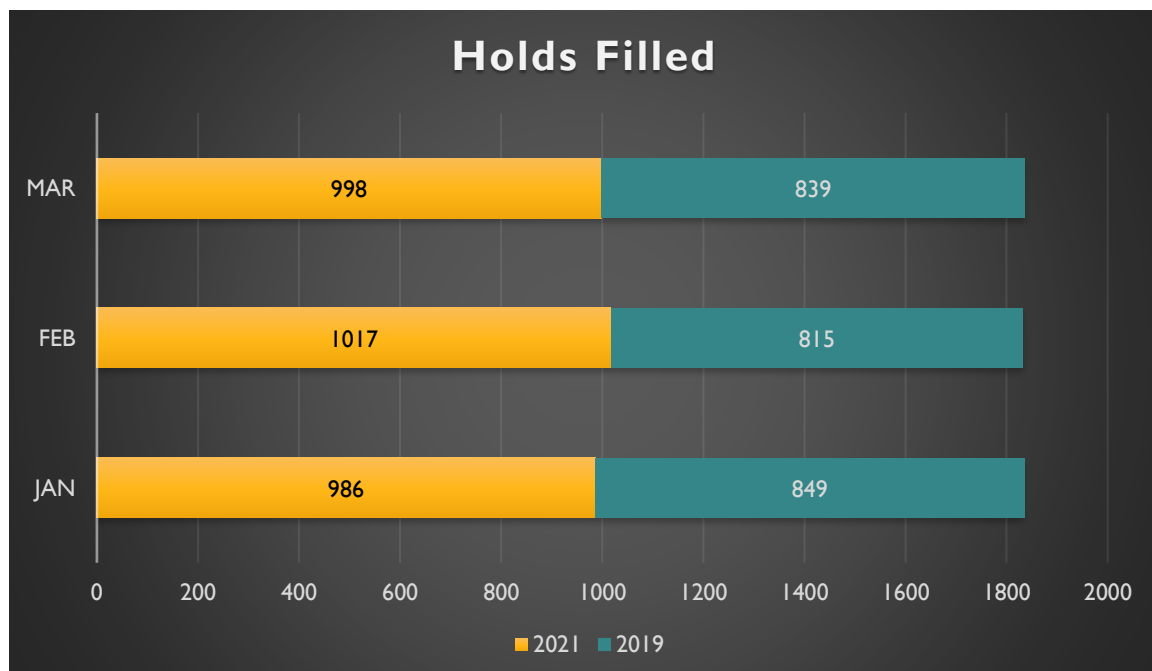
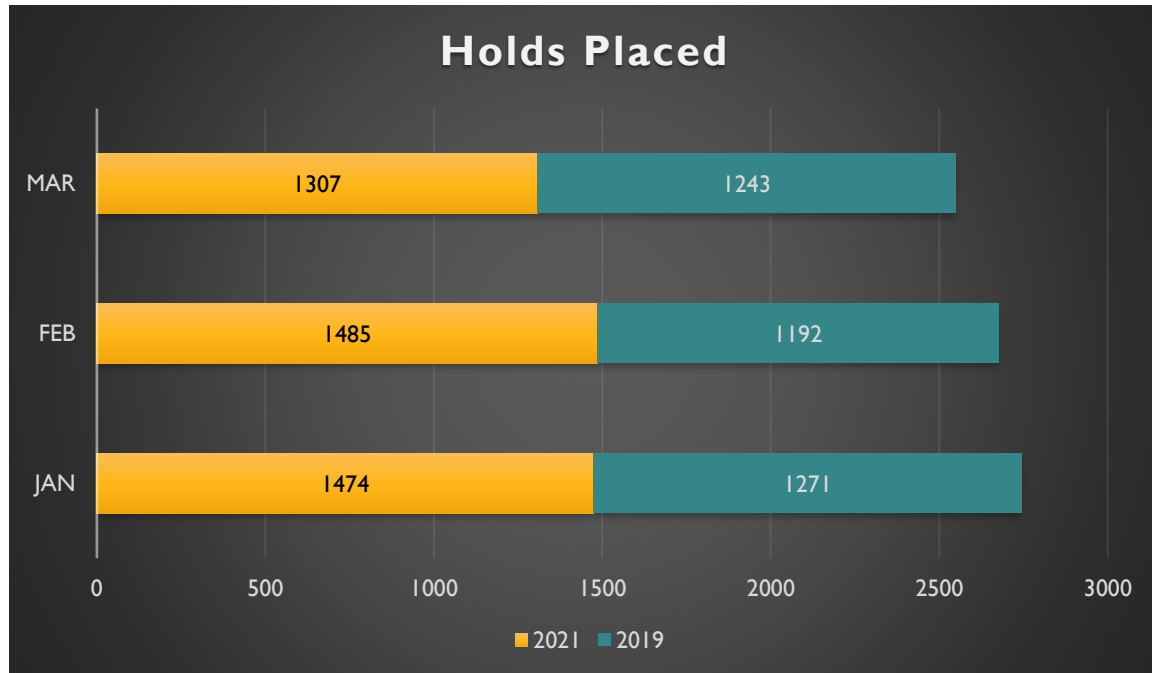


#### DVD

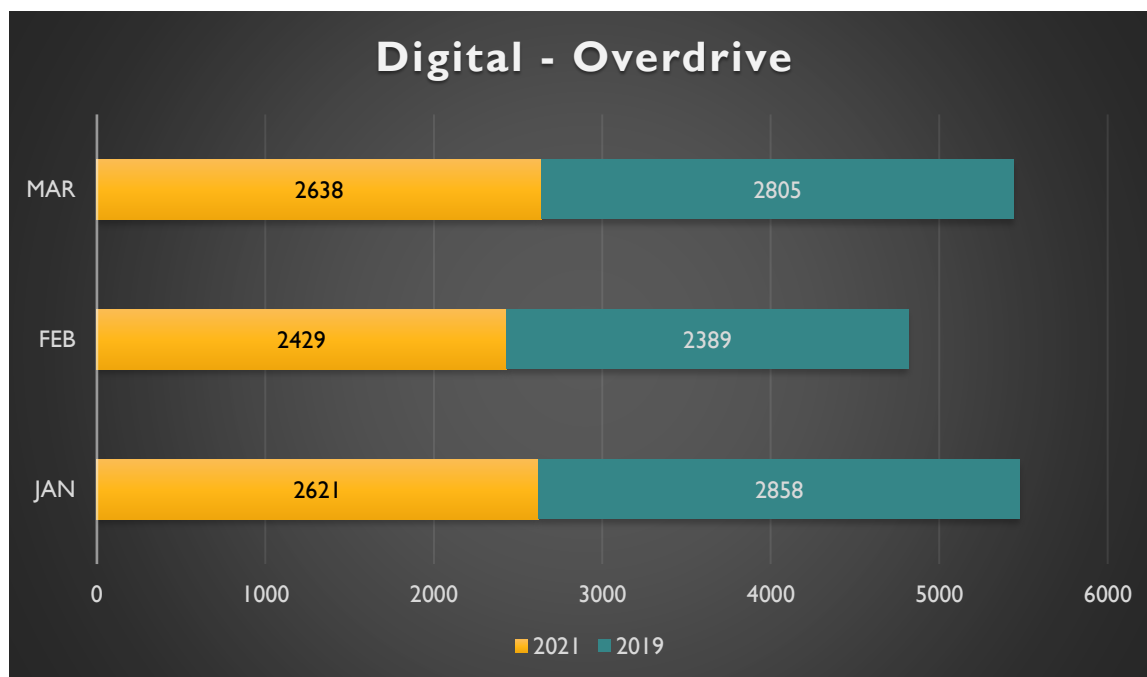
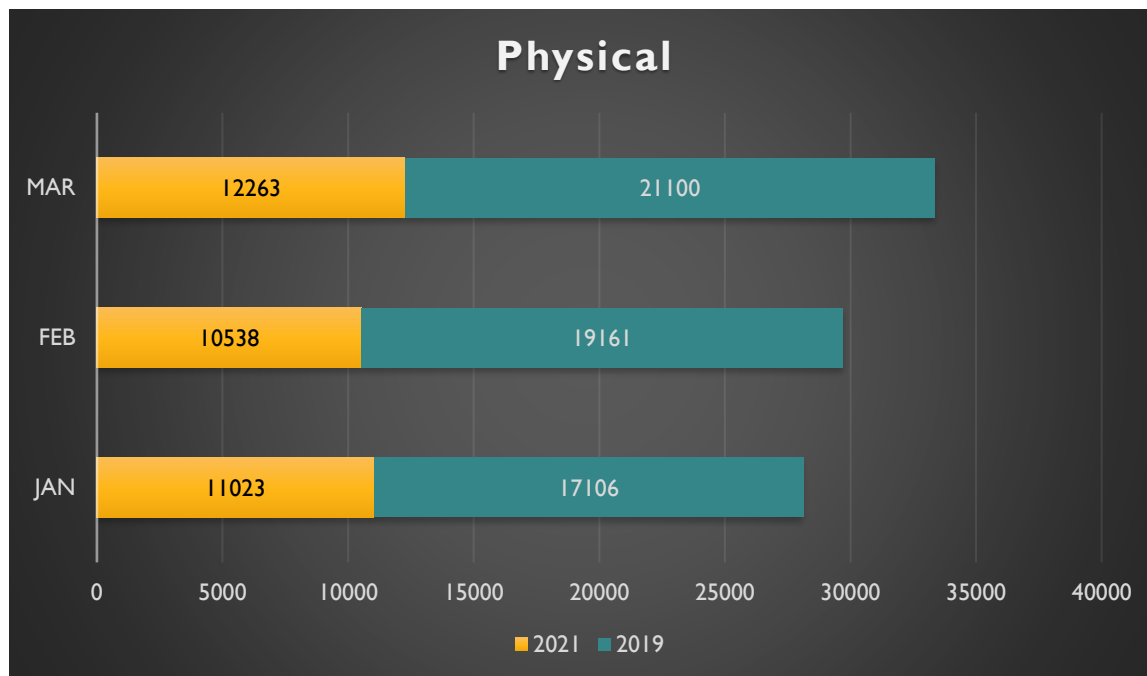


## CIRCULATION

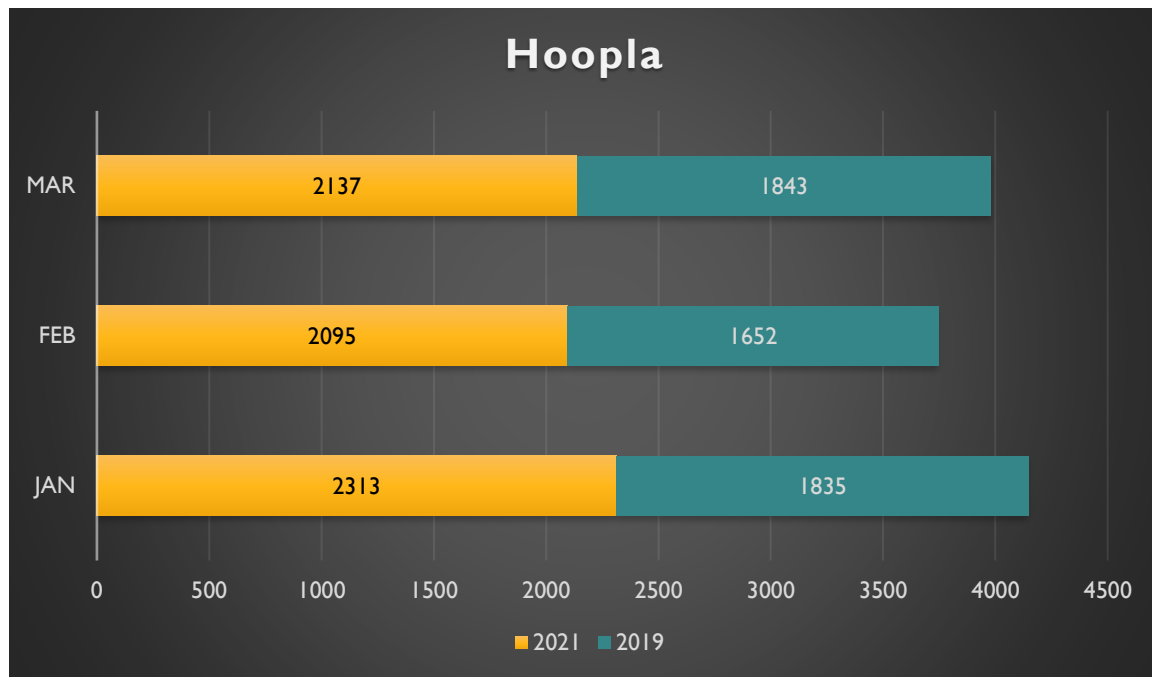
## HOLDS PLACED



## CHECKOUTS



\*2019 numbers include Checkouts from RBdigital/Zinio; that service was acquired and absorbed into Overdrive in Fall 2020.



# Library Director

**Name:** Celine Swan

**Date:** April 2021

---

## Since Last Report

---

### March-Current

- RFP for HVAC for Architect for this Capital Project-update
- RFP for ILS-Integrated Library System Software-update
- Update on Pioneer Consortium
- Spring Break Week/Bookopoly update
- Virtual Report
- Media Report
- GITV Report
- Hall County Quarterly Report. Possible flyer to Hall County
- Library Foundation Work: 295 funds, Peter Kiewit update, on work on signage, 6 monitors, Go Big Give, Volunteers
- Ray/Brian got the seating installed in garden area, working on signage with plants listed
- GITV/Virtual Programming update

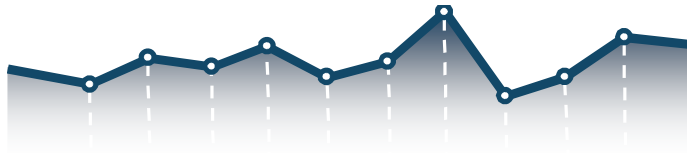
### Upcoming-Library work

- Ray/Brian water leaks fixed in foyer and MR-B, cleaning storage area
- Foundation Go Big Give Day May 6
- Foundation-National Library Week/Makerspace Promotions-thank you to Foundation!
- Peter Kiewit-future projects-outdoor area, video/audio equipment
- Spotlight on new library foundation director-Leigh did with Irasema
- Partner with Hall County Historical Society on Bygone Hall County Book Club partnership promotion in September
- PrimeTime School Programs 4/10/21-5/15/21 (virtual) Elementary Ages in progress
- Preschool PrimeTime 5/22/21-6/26/21 (virtual)
- Laura Fentress Youth & Family Services Librarian visited April 6 begins May 10 and Elle is back April 26
- Summer Temp Jobs goes before council for an increase of 0.5
- Summer Reading Program finalization, virtual and makerspace
- Summer planning-Outreach to Parks/Schools, Promotional flyer is out, posters will go out May 1, in-library flyers, will put on calendar, need to finalize programs for teens, adults, and big children's programs.
- Strategic Plan-working with Shaun on updating policies
- American Recovery Grants, ALA COVID Library Relief Fund, IMLS ARPA grants through Nebraska Library Commission
- Racial Justice 101-YWCA training for Library Board and Staff in May
- Staff-COVID Immunizations-update

## Library Media Report

April 15, 2021 Report

<a href="#">Hall County Historical Society-ByGone Book Club</a>	3/6/2021	Hall County
<a href="#">Grand Island Public Library plans spring break programming</a>	3/7/2021	GI Independent
<a href="#">Library Alive: Teamwork Makes the Dream Work!</a>	3/7/2021	GI Independent
<a href="#">Pandemic Prompts Grand Island library to create studio</a>	3/7/2021	The Washington Times
<a href="#">Pandemic Prompts Grand Island library to create studio</a>	3/7/2021	LMTOnline
<a href="#">Hall County Historical Society-History Nebraska Grace Abbott GIPL Book club</a>	3/9/2021	Hall County Historical FB
<a href="#">Community Connections Online</a>	3/16/2021	KRGI Radio
<a href="#">Governor proclaims today Abbott Sister Day</a>	3/17/2021	GI Independent
<a href="https://news.uchicago.edu/story/uchicagos-crown-family-school-dedicates-">https://news.uchicago.edu/story/uchicagos-crown-family-school-dedicates-</a>	3/20/2021	UChicagoNews
<a href="#">Library Alive: Cooking the books at the library</a>	3/21/2021	GI Independent
<a href="#">Grand Island Public Library leaving state consortium</a>	3/28/2021	GI Independent
<a href="#">University of Chicago bestows honor on Edith Abbott</a>	3/29/2021	GI Independent
<a href="#">Grand Island library offers more than 3,000 magazines to download</a>	2/1/2021	NE Municipal Review Pub.
<a href="#">Interview with Franzman 107.7 The Island-Makerspace and Go Big Give</a>	4/2/2021	107.7 The Island
<a href="#">Library Alive: Welcome to the Library</a>	4/4/2021	GI Independent
<a href="#">National Library Week</a>	4/4-4/10	Local Events GI Independent
<a href="#">Club Calendar-Grand Island Public Library Book Club</a>	4/4/2021	GI Independent
<a href="#">GI Public Library inching towards normalcy</a>	4/7/2021	News 4
<a href="#">Watch Now: Grand Island Public Library Makerspace</a>	4/11/2021	GI Independent
<a href="http://www.facebook.com/HallCountyCommunityCollaborative">www.facebook.com/HallCountyCommunityCollaborative</a>	4/11/2021	H3C
<a href="#">National Library Week: Grand Island Public Library shows off makerspace innovation</a>	4/11/2021	GI Independent
<a href="#">Prime Time Reading Programs Helps Grand Island Kids Improve in School</a>	4/12/2021	Just released



## Virtual Programs

March	#sessions	Craft bags	Total Views	# of programs =19  Total views = 768
Baby & Toddler				
	5	0	19x2	
			38	
Wednesday Storytime				
	5	0	17x2	
			34	
Teen/Tweens				
	1	0	17x2	
			34	
School at Home				
	1	0	35x2	
			70	
Spring Break				
	6	9	46x2	
			92	
Zoom Program				
Live program at the school	1		500	



## GITV update from Jeremy Watson

As of April 5, 2021, the library is receiving approximately **10.983** hours or broadcast air-time per day. That's an increase from last month, previously **9.983 hours per day**. Additional content now translates to **70.881** hours per week on Channel 187, and the LIVE GITV Stream.

There also several announcements running on the news crawl, as well as graphic media, 24 hours a day on Channel 180. That same graphic media has also been converted into a short hitting video file that runs on Channel 187 and the stream as well.

2021 Bear Fair Promo (now outdated)

2021 Database Highlight Promo

2021 Floral Arrangements: Tips & Tricks

2021 Genealogy: Tips & Tricks

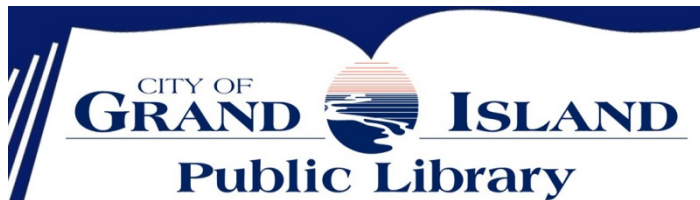
2021 Call for Volunteers Graphic Media Promo

2021 Canvas Art/Fun Family Night Activity

2021 What is Sound? – Science Fun

Broadcasting Daily Rotation and LIVE Stream/Channel 187: 23 Runs  
**(609 minutes per day) (70.881 Hours per week)**.

**\*\*All segments are also available online at [www.grand-island.com](http://www.grand-island.com) as we continue to build on demand Library content.**



**Quarterly Report of  
Household Library Cards  
Issued to Hall County Residents  
Outside of Grand Island**

**January-March 2021**

---

**To Hall County Board of Supervisors:**

At the end of March 2021 our statistical report showed a total of 1,082 Hall County household cards, yielding +7 household cards issued this past quarter.

Our automated reporting of household cards is based on one member of each household manually coded as “head of household” no matter how many in the household have cards. For this quarter, the library was open to the public and we did have some limited services and hours due to COVID-19. We had limited hours of one hour of usage per day for patrons to come in but we have upped that to two hours in March and opened up more of the library and masks are suggested not mandated. We offered in-library usage, drive-through, virtual programming for all ages, and online services. Many patrons used or are still using their existing cards for checkout of digital resources. Our Makerspace Lab, and more meeting rooms were opened.

Balance December 31, 2020	1,075
January-March 2021 Issues	+7
Balance March 31, 2021	1,082

A handwritten signature in black ink that reads "Celine D. Swan". The signature is fluid and cursive.

---

**Celine Swan, Library Director**

**April 1, 2021**