



City of Grand Island

Tuesday, December 28, 2021

Council Session

Item E-2

Public Hearing on Acquisition of Utility Easement - 3625 W. Old Potash (Hornady Family)

Council action will take place under Consent Agenda item G-10.

Staff Contact: Tim Luchsinger, Stacy Nonhof

Council Agenda Memo

From: Tim Luchsinger, Utilities Director
Stacy Nonhof, Interim City Attorney

Meeting: December 28, 2021

Subject: Acquisition of Utility Easement – 3625 W. Old Potash Highway – Hornady Family Limited Partnership

Presenter(s): Timothy Luchsinger, Utilities Director

Background

Nebraska State Law requires that acquisition of property must be approved by City Council. The Utilities Department needs to acquire utility easement relative to the property of Hornady Family Limited Partnership, through a part of the North Half of the Northeast Quarter (N1/2, NE1/4) of Section Twenty Four (24), Township Eleven (11) North, Range Ten (10) West of the 6th PM in Hall County, Nebraska (3625 W. Old Potash Highway), in order to have access to install, upgrade, maintain, and repair power appurtenances, including lines and transformers.

Discussion

Hornady Manufacturing is in the process of expanding their Manufacturing Plant located at 3625 W. Old Potash Hwy. As a part of the expansion the City will need to install an additional 2500 KVA transformer to upgrade the existing electrical service. This easement will allow the Utilities Department to access, operate and maintain the electrical infrastructure at this location.

Alternatives

It appears that the Council has the following alternatives concerning the issue at hand. The Council may:

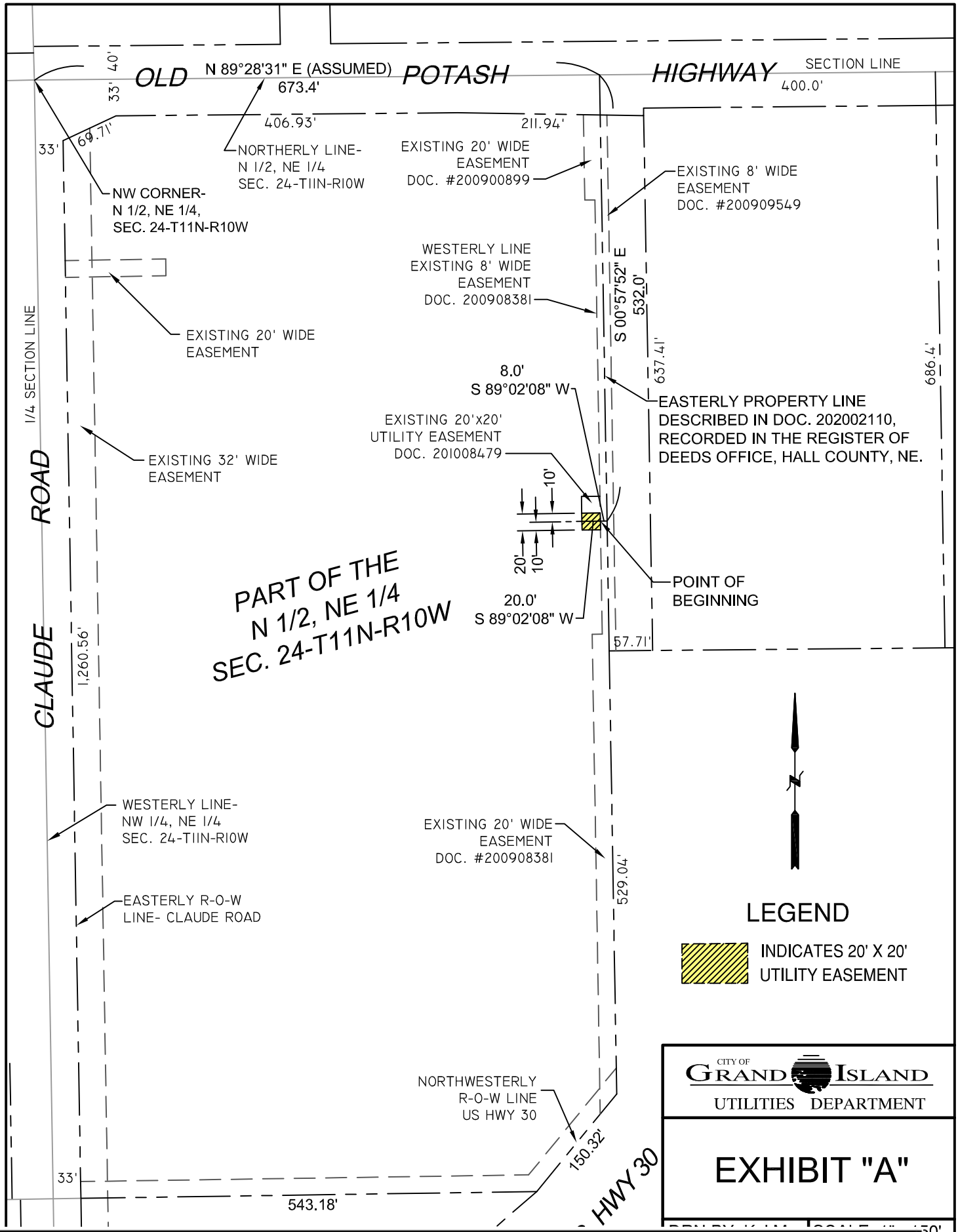
1. Make a motion to approve
2. Refer the issue to a Committee
3. Postpone the issue to future date
4. Take no action on the issue

Recommendation

City Administration recommends that the Council approve the resolution for the acquisition of the easement for one dollar (\$1.00).

Sample Motion

Move to approve acquisition of the Utility Easement.



**PART OF THE
N 1/2, NE 1/4
SEC. 24-T11N-R10W**