



City of Grand Island

Tuesday, December 14, 2021

Council Session

Item G-4

#2021-341 - Approving Acquisition of Utility Easement - 3225 W. Wildwood Dr (42 Grand Island, LP)

This item relates to the aforementioned Public Hearing item E-3.

Staff Contact: Tim Luchsinger, Stacy Nonhof

RESOLUTION 2021-341

WHEREAS, a public utility easement is required by the City of Grand Island from 42 Grand Island, LP, to survey, construct, inspect, maintain, repair, replace, relocate, extend, remove, and operate thereon, public utilities and appurtenances, including power lines; and

WHEREAS, a public hearing was held on December 14, 2021, for the purpose of discussing the proposed acquisition of a utility easement and right-of-way tract located through a part of Lot One (1), Lewis Acres Subdivision, an addition to the City of Grand Island, Hall County, Nebraska, and more particularly described as follows:

TRACT 1 (EXHIBIT A)

A twenty-foot (20.0 ft.) Utility Easement consisting of part Lot 1, Lewis Acres Subdivision, an addition to the City of Grand Island, Hall County, Nebraska, and more particularly described as follows:

Commencing at the Northwest corner of Lot 1, Lewis Acres Subdivision; thence on an assumed bearing of S04°28'54"E, along the West line of said Lot 1, a distance of 40.15 feet to the ACTUAL Point of Beginning; thence S89°31'24"E, parallel to the North line of said Lot 1, a distance of 46.11 feet; thence S00°45'25"E a distance of 1240.92 feet to a point on the South line of said Lot 1; thence N89°26'24"W, along said South line of Lot 1, a distance of 30.01 feet to the Southwest corner of said Lot 1; thence N00°45'25"W, along the West line of said Lot 1, a distance of 993.87 feet; thence N04°28'54"W, continuing along said West line of said Lot 1, a distance of 247.88 feet to the said Point of Beginning.

TRACT 2 (EXHIBIT B)

A Utility Easement consisting of part Lot 1, Lewis Acres Subdivision, an addition to the City of Grand Island, Hall County, Nebraska, and more particularly described as follows:

Commencing at the Northwest corner of Lot 1, Lewis Acres Subdivision; thence on an assumed bearing of S89°31'24"E, along the North line of said Lot 1, a distance of 170.37 feet; thence S89°31'14"E, continuing along said North line of Lot 1, a distance of 132.02 feet; thence S00°00'00"E a distance of 40.00 feet to the ACTUAL Point of Beginning; thence S89°31'14"E a distance of 20.00 feet; thence S00°00'00"E a distance of 344.67 feet; thence N90°00'00"W a distance of 20.00 feet; thence N00°00'00"W a distance of 344.83 feet to the said Point of Beginning.

The above-described easement and right-of-way containing a combined total of 1.058 acres, more or less as shown on the plat dated 9/17/2021, marked Exhibit "A", attached hereto and incorporated herein by reference.

Approved as to Form	▣ _____
December 22, 2021	▣ City Attorney

NOW, THEREFORE, BE IT RESOLVED BY THE MAYOR AND COUNCIL OF THE CITY OF GRAND ISLAND, NEBRASKA, that the City of Grand Island be, and hereby is, authorized to acquire a public utility easement from 42 Grand Island, LP, on the above-described tracts of land.

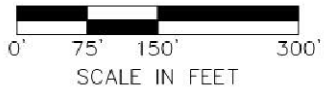
- - -

Adopted by the City Council of the City of Grand Island, Nebraska, December 14, 2021.

Roger G. Steele, Mayor

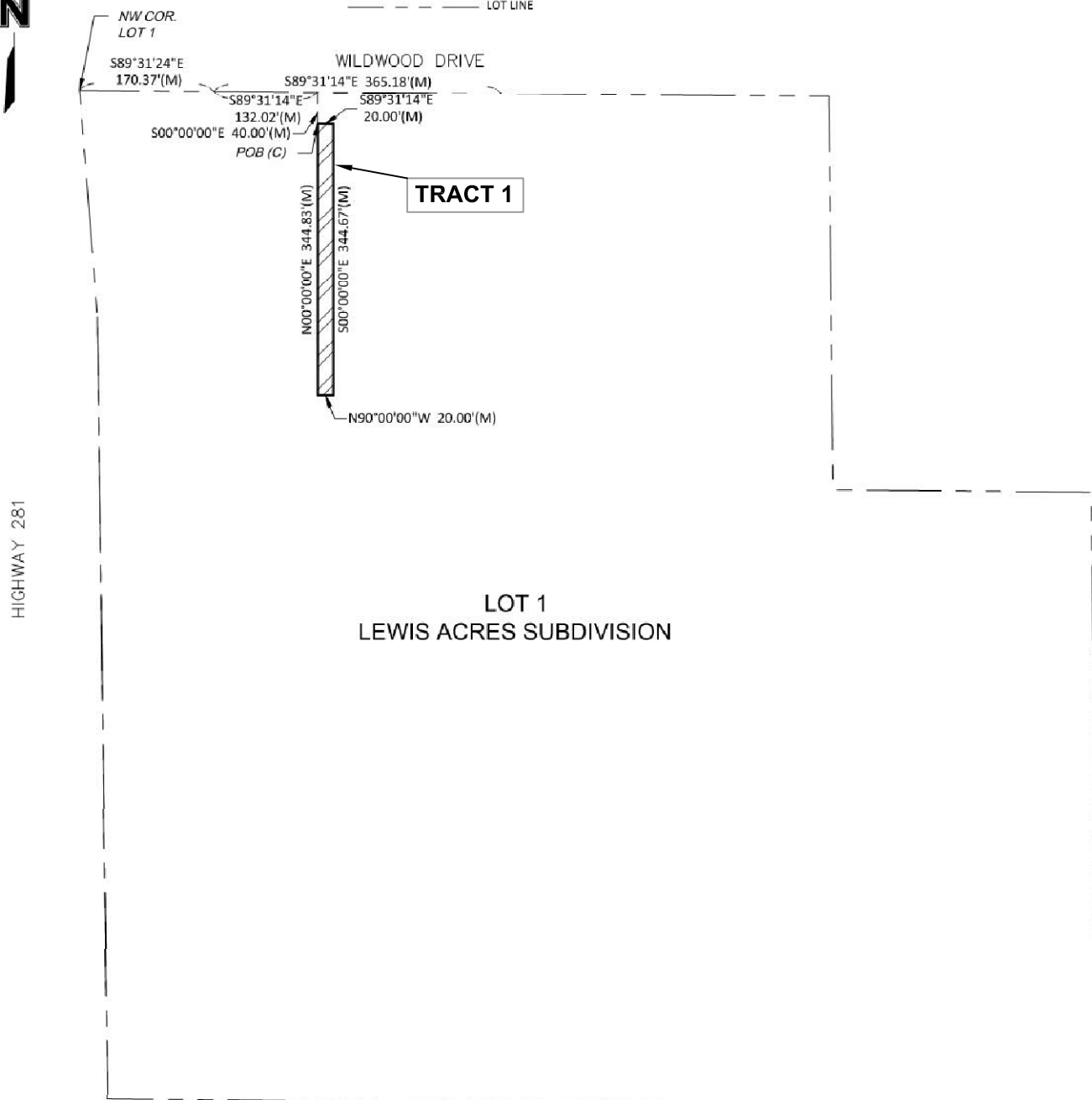
Attest:

RaNae Edwards, City Clerk



LEGEND

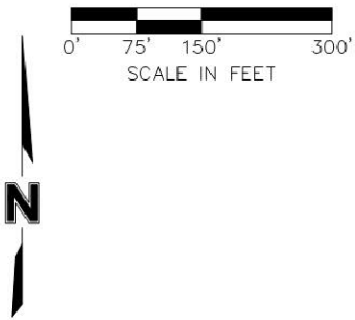
- PROPOSED 20' UTILITY EASEMENT
- LOT LINE



CITY OF
GRAND ISLAND
UTILITIES DEPARTMENT

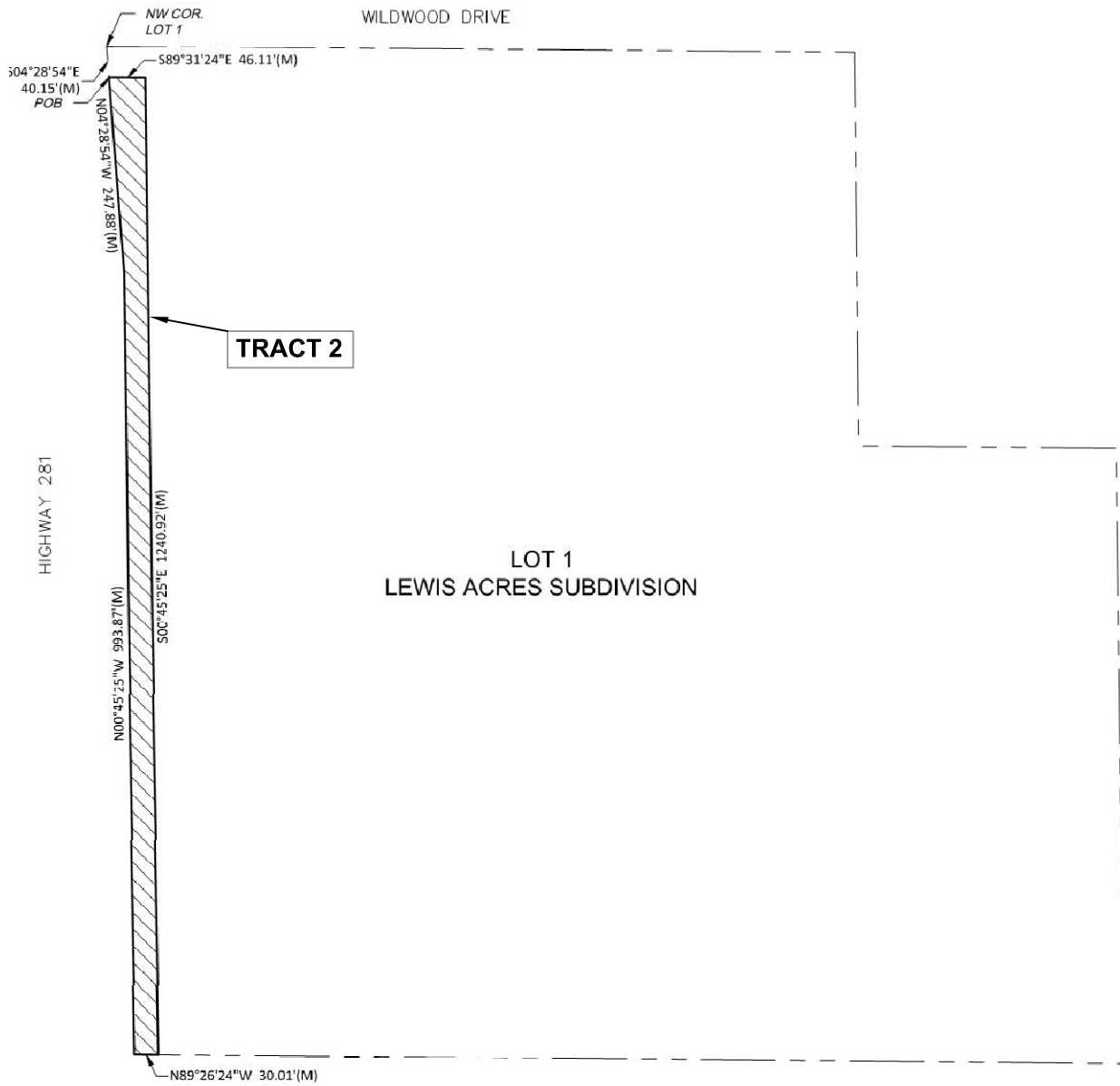
EXHIBIT "A"

DATE: 9/17/2021 | FILE: LEWIS ACRES



LEGEND

- PROPOSED UTILITY EASEMENT
- LOT LINE



CITY OF
GRAND ISLAND
UTILITIES DEPARTMENT

EXHIBIT "B"

DATE: 9/17/2021 | FILE: LEWIS ACRES