



City of Grand Island

Tuesday, November 9, 2021

Council Session

Item G-15

#2021-313 - Approving Proposal to Furnish and Install Indoor Playground at the Community Fieldhouse

Staff Contact: Todd McCoy

Council Agenda Memo

From: Todd McCoy, Parks and Recreation Director

Meeting: November 9, 2021

Subject: Approve RFP for a New Indoor Playground at the Community Fieldhouse

Presenter: Todd McCoy, Parks and Recreation Director

Background

The Community Fieldhouse is a 70,000 square foot indoor recreational facility which features indoor turf, three batting cages, four volleyball courts, two basketball courts, meeting rooms, and an indoor portable playground. Activities include volleyball, soccer, flag football, basketball, baseball, softball, leagues, tournaments, and rentals for birthday parties, and much more. During the Nebraska State Fair the building is used for 4-H displays and other fair exhibits. The Parks and Recreation Department received permission from the Nebraska State Fair to install a new permanent indoor playground.

Discussion

The City of Grand Island advertised for proposals to furnish and install a new indoor playground at the Community Fieldhouse on September 4, 2021. Two proposals were received.

The Parks and Recreation Department recommends accepting the proposal from Crouch Recreation of Omaha, Nebraska to install the new indoor playground. Crouch Recreation proposes to install a new Soft Play playground that features rubber tile safety surfacing with three enclosed levels that includes slides, climbers, handicap ramps, and a number of interactive play features. The proposal project cost is \$211,504.00. The project will be funded through the Food and Beverage Tax proceeds.

The new permanent structure will dramatically improve the playground experience for users and save staff time of disassembling and reassembling the portable playground each year. State Fair patrons will also have the advantage of utilizing the new playground.

Alternatives

The Council has the following alternatives concerning the issue at hand. The Council may:

1. Move to approve
2. Refer the issue to a Committee
3. Postpone the issue to future date
4. Take no action on the issue

Recommendation

City Administration recommends that Council approve the proposal from Crouch Recreation of Omaha, Nebraska in the amount of \$211,504.00 to build a new indoor playground at the Community Fieldhouse.

Sample Motion

Move to approve the proposal from Crouch Recreation to construct a new indoor playground at the Community Fieldhouse.



Stacy Nonhof, Purchasing Agent

*Working Together for a
Better Tomorrow, Today*

**REQUEST FOR PROPOSAL
FOR
COMMUNITY FIELDHOUSE INDOOR PLAYGROUND**

RFP DUE DATE: October 5, 2021 at 4:00 p.m.

DEPARTMENT: Parks and Recreation

PUBLICATION DATE: September 4, 2021

NO. POTENTIAL BIDDERS: 12

PROPOSALS RECEIVED

Crouch Recreation
Omaha, NE

Creative Sites, LLC
Omaha, NE

cc: Todd McCoy, Parks & Recreation Director
Jerry Janulewicz, City Administrator
Stacy Nonhof, Purchasing Agent

Patti Buettner, Parks Admin. Assist.
Patrick Brown, Finance Director
Jeremy Bachmann, Recreation Supt.

P2312



DESIGN FOR FUN, JUST FOR YOU

CITY OF GRAND ISLAND FIELDHOUSE

525 E. FONNER PARK RD.
GRAND ISLAND NE 68801

PRPSL6903
OCTOBER 01, 2021



PLAY EXPERIENCE

CONCEPT DEVELOPMENT

KIDS

Discovery & Surprise
Challenge & Adventure
Fun & Active Play



PLAYGROUND OWNER

Worryfree &
Low Maintenance
Compliance with
Local Regulations
Family Magnet

PARENTS/CAREGIVERS

Openness & Visibility
Cleanliness & Safety
Active Entertainment

CONFIDENTIAL. SOFT PLAY, LLC. NOT FOR DISTRIBUTION.



This Soft Play® design creates a memorable experience and endless play opportunities to make your destination an attraction families will come back to time and time again.

CONFIDENTIAL. SOFT PLAY, LLC. NOT FOR DISTRIBUTION.



CONFIDENTIAL. SOFT PLAY, LLC. NOT FOR DISTRIBUTION.



CONFIDENTIAL. SOFT PLAY, LLC. NOT FOR DISTRIBUTION.



CONFIDENTIAL. SOFT PLAY, LLC. NOT FOR DISTRIBUTION.

PLAY DETAILS

Play Capacity

140 children

Playground Footprint

36'-0" (10.97m)

22'-3" (6.09m)

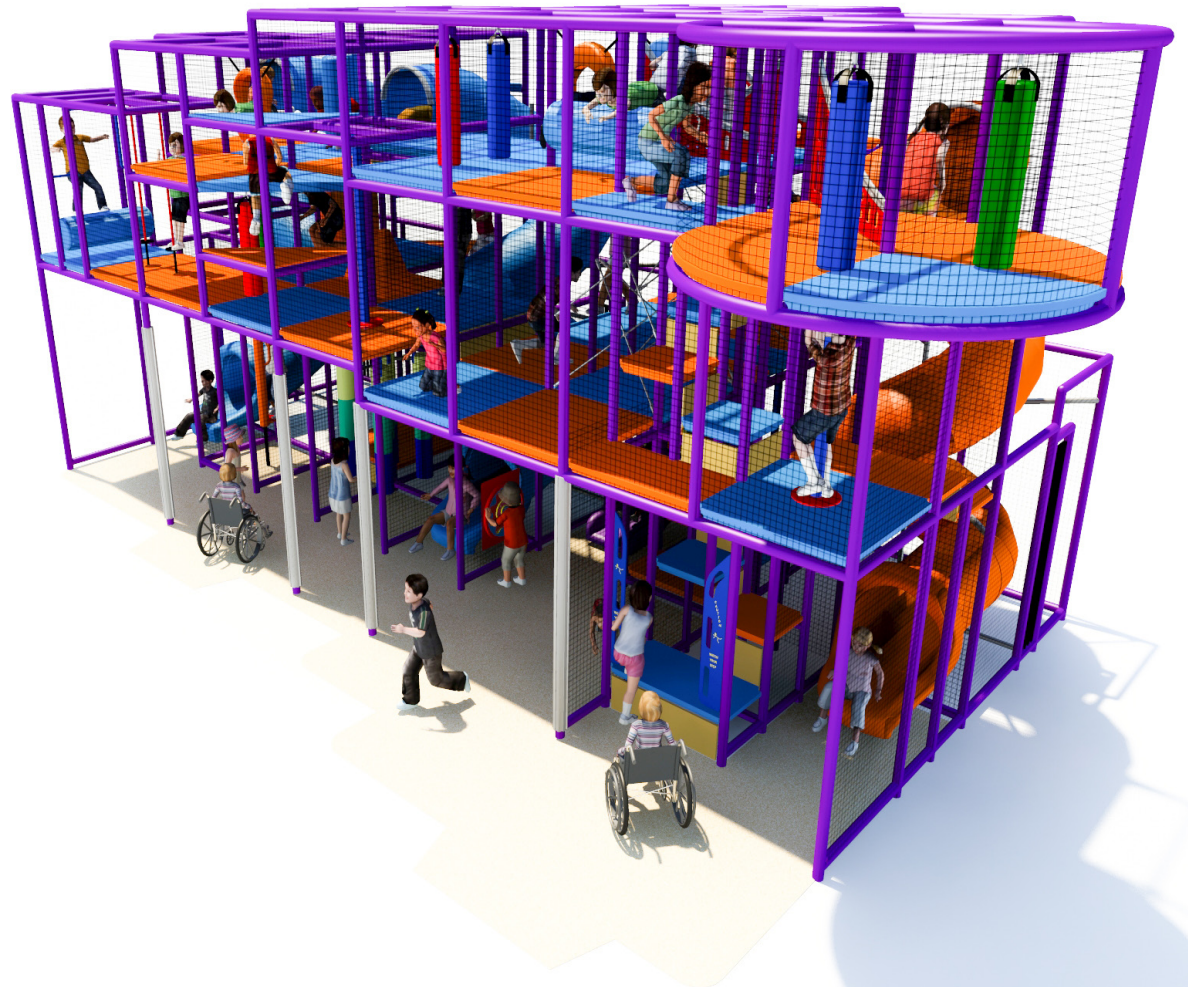
Play Equipment Height

17' 3 1/2" (5.27m)

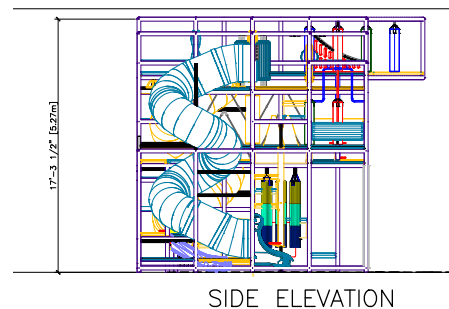
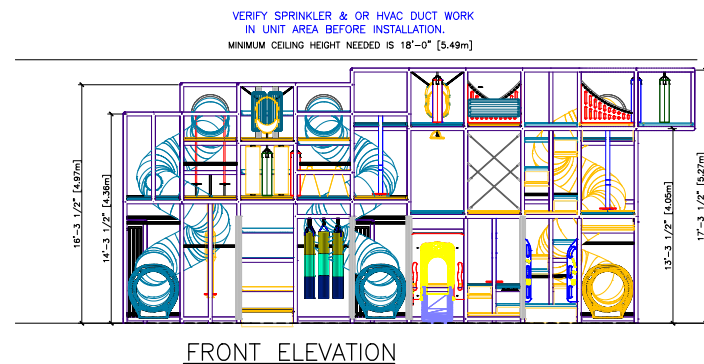
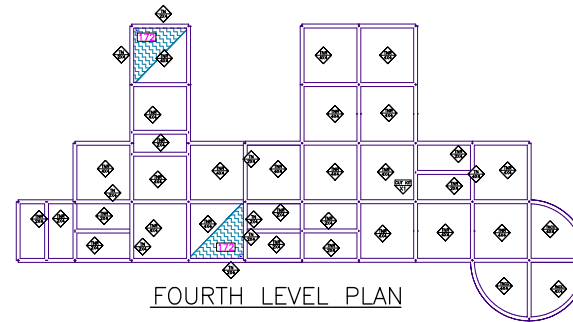
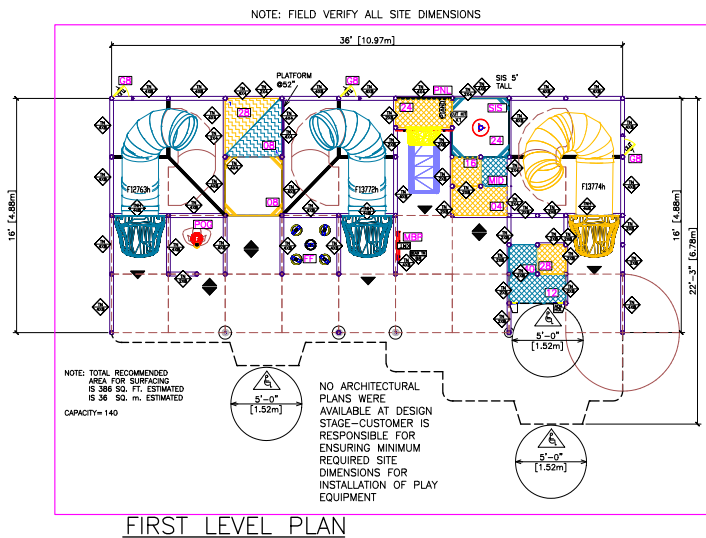
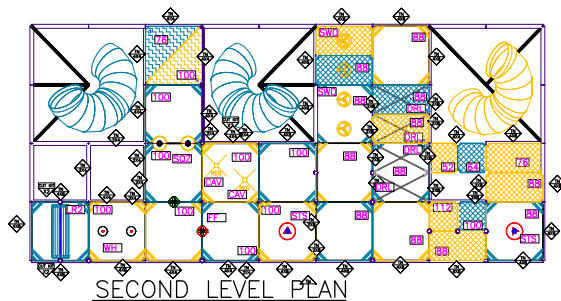
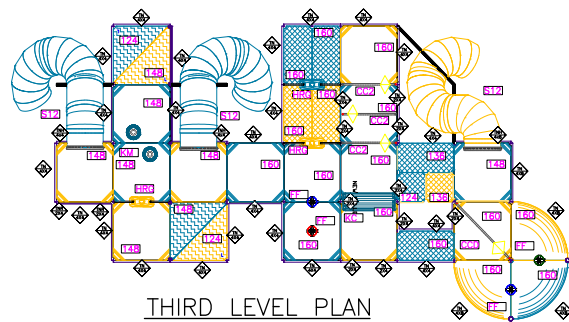
Recommended Surfacing

386 SQ FT.

36 SQ M.



CONFIDENTIAL. SOFT PLAY, LLC. NOT FOR DISTRIBUTION.



FEATURE COMPONENTS

- | | |
|-----|----------------------|
| CAV | CAVE CRAWL |
| CC2 | CROSS CROSS 2 |
| CCD | CRAGONAL CROSS CROSS |
| DRL | DRAGON LAIR |
| FF | FUN FOREST |
| G8 | GATE |
| HDL | ADA HANDLE |
| HRG | HOVER RING |
| KC | KID CONVEYER |
| KM | KLEEN MACHINE |
| LR2 | LOG ROLL |
| MBP | MATH BEAD PANEL |
| PNL | PIANO MUSIC PANEL |
| S12 | SLIDE, 12 FEET |
| SIS | SIT-N-SPIN |
| STS | STAND-N-N-SPIN |
| SOZ | THE SQUEEZE |
| TDC | TODDLER CLIMBER |
| SWD | SKY-WHEEL DOUBLE |
| WH | WOBBLE HOPPER |

PANEL DESIGNATIONS

GENERAL + TUFF NET

VANDAL RESISTANT

MATERIAL

SIZE

ABBREVIATIONS

DESCRIPTION

SIZE

COLOR

COLOR (if variable)

MXB

4X4

LC PARTS LEXAN
M MESH
MB MOLDED BARRIER PANEL (4X8)
MR MIRROR
W7X2K PLATFORM STEP FILLER, KICKPL.
X70 PLATFORM STEP FILLER, NET
K KICK PLATE 8"x20"
K KICK PLATE 12"x20"
12+ KICK PLATE 12"x44"
TN Turfnet
TNR Turfnet[®] ROOF PANEL
TNC Turfnet[®] with HOLE
TNE Turfnet[®] above rounded decks
DONG DONG
XL Turfnet[®] EDGE ATTACHMENT
X68 Turfnet[®] PLATFORM ATT. w/Edge
X634 Turfnet[®] PLATFORM ATT. w/out
TSR SIMPLE SLIDE Turfnet[®] PANEL
X02 EXTRUDED PAD ASSEMBLY 360"
X02 EXTRUDED PAD ASSEMBLY 180"
K2 KIT 1x1
K2 KIT 2x1

LEGEND

REQUIRED MINIMUM use zone for approved impact attenuating includes area from perimeter of SOFT PLANT unit to dashed line.

Sneaker Keeper. Final location as indicated by design.

Locked cleaning entry with zipper (link).

Entry/Exit Point.

ADA Wheelchair turning area. Domestic.

Wheelchair parking area. U.S.A.



Indicates existing component to be reused in *Replay* units.

Interior netting barriers

COSE PLAY CONSTRUCTION

- Intent of drawings is to show location of equipment to be provided by SOFT PLAY, LLC. All site dimensions and minimum safety clearances pertaining to the SOFT PLAY equipment **MUST BE VERIFIED** before installation

- Concrete Slab to be a minimum of 4" thick. Tree Supported systems or other that may require greater depth will be noted on the site plan.
- Unit to be anchored per Soft Play engineering standard #0143 unless otherwise noted by engineer on record.
- Slope of concrete slab supporting unit

- Verify size, location and clearances of all equipment other than that provided by SOFT PLAY, LLC.

INDOOR INSTALLATIONS

- Indoor sites must have a minimum opening

Units with a TALL ROCKET COKE must have a minimum opening of $79^{\circ} \times 79^{\circ}$.
Units with a PLAYBOY must have a minimum opening of $90^{\circ} \times 90^{\circ}$.

DISCLAIMER OF

LIABILITY
SOFT PLAY, L.L.C. CONFIRMS THAT THE PLACEMENT AND CONFIGURATION OF SOFT PLAY

EQUIPMENT ONLY, AS DEPICTED
ON THIS DRAWING, COMPLIES
WITH THE USE ZONE
REQUIREMENTS OF ASTM F 1918
AND OTHER APPLICABLE
GUIDELINES. SOFT PLAY IS

UNABLE TO VERIFY THE COMPLIANCE OF ANY ON-SITE CONFIGURATION AND/OR PLACEMENT OF NON-SOFT PLAY PRODUCTS, AND THEREFORE, ESPECIALLY DISCLOSE

SPECIFICALLY DISCLAIMS,
REJECTS, AND DENIES
RESPONSIBILITY AND/OR
LIABILITY FOR ANY SUCH
ON-SITE PLACEMENT OR
CONFIGURATION OF NON-SOFT
MATERIALS.

PLAY PRODUCTS. IT SHALL BE THE RESPONSIBILITY OF THE NON-SOFT PLAY PRODUCT VENDOR AND/OR THE OWNER/OPERATOR TO ENSURE COMPLIANCE WITH THE USE

ZONE REQUIREMENTS OF ASTM F 1918 AND OTHER GUIDELINES AS TO ALL NON-SOFT PLAY PRODUCTS

SITE VERIFICATION

UNIT TYPE: CUSTOM

PLEASE SIGN, COPY AND FAX THIS

PORTION TO INDICATE THAT ALL MEASUREMENTS, DISTANCES AND CLEARANCES ARE CORRECT AS SHOWN ON THIS DRAWING. ANY OBSTRUCTIONS NOT SHOWN MUST BE IDENTIFIED FROM ACTUAL SITE.

CORRECTIONS MUST BE MADE ON THIS COPY AND RETURNED TO THE OFFICE OF SOFTPLAY L.L.C. FOR APPROVAL PRIOR TO MANUFACTURING OF THE UNIT.

REGION MANAGER:

REGION: _____
DATE: _____
OWNER/OPERATOR: _____
DATE: _____

FOR DISTRIBUTIONPage



FEATURED PLAY

Soft Play systems are designed to promote active, inclusive, age-appropriate play that challenges physical, social, cognitive and decision-making skills in children of all ages and abilities.

Look for these symbols to see how each of our play experiences helps move bodies, minds and imaginations:



IMAGINATION

stimulates creativity to keep the mind as active as the body



ACTIVE

gets arms, legs, hearts and lungs working



EXCLUSIVE

play events that are exclusive to Soft Play



SENSORY

involves sights, sounds and touch as you play



SOCIAL

encourages kids to play cooperatively



INCLUSIVE

enables kids of all abilities to play

CONFIDENTIAL. SOFT PLAY, LLC. NOT FOR DISTRIBUTION.



2X2 PLATFORM CLIMB

These 2' x 2' platforms make it easy for kids to take the fun all the way to the top.



DRAGON LAIR

Kids will have a blast running this gauntlet of crisscrossing ropes again and again.



HOVER RING

This uniquely shaped, suspended ring is fun for kids to crawl through and hang out.



SPIRAL SLIDE

Kids will love spiraling out of control on these smooth, fast and fun slides.



SKYWHEEL

Kids will love taking a spin on this challenging hand-over-hand course with a twist.



KID CONVEYOR

Fun is on a roll as kids use hand strength to pull themselves over rolling logs.



CONFIDENTIAL. SOFT PLAY, LLC. NOT FOR DISTRIBUTION.



WOBBLE HOPPER

Kids will love shaking their way to better core balance and hand-eye-foot coordination.



STAND-N-SPIN

This grown-up version of the classic toy lets kids spin like a champion ice skater.



FUN FOREST

Kids will love finding their way through this maze's forest of hanging, foam-filled bags.



THE SQUEEZE

Kids can squeeze through these foam and vinyl rollers anywhere on the playground.



LOG ROLL

Kids can work out like a lumberjack while also learning core-body balance awareness.



CAVE CRAWL

Soft foam and vinyl stalagmites and stalactites make this cave adventure safe and fun.



CONFIDENTIAL. SOFT PLAY, LLC. NOT FOR DISTRIBUTION.



CRISS-CROSS

This high-step staggered obstacle is a hurdle kids will love getting over.



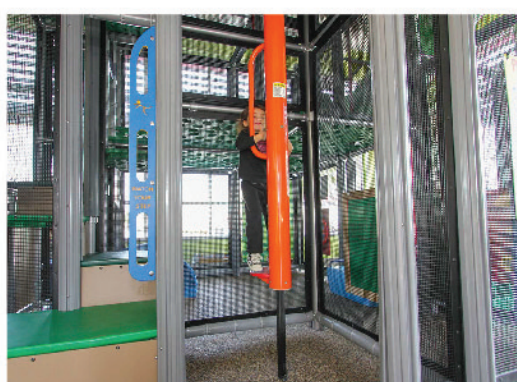
TODDLER SLIDE

Toddlers will be thrilled by this safe, age-appropriate slide made just for them.



MATH BEADS PANEL

This panel helps kids locate several items to reinforce counting and sequencing skills.



POGO POWER

Kids can bounce up and down, high and fast as they like, on this stationary pogo.



ELECTRONIC PIANO PLAY PANEL

Kids can play highly realistic music featuring 8 piano notes and 8 percussion tones.



CONFIDENTIAL. SOFT PLAY, LLC. NOT FOR DISTRIBUTION.



WHY SOFT PLAY?



MANUFACTURING FACILITY

IN MONETT, MISSOURI

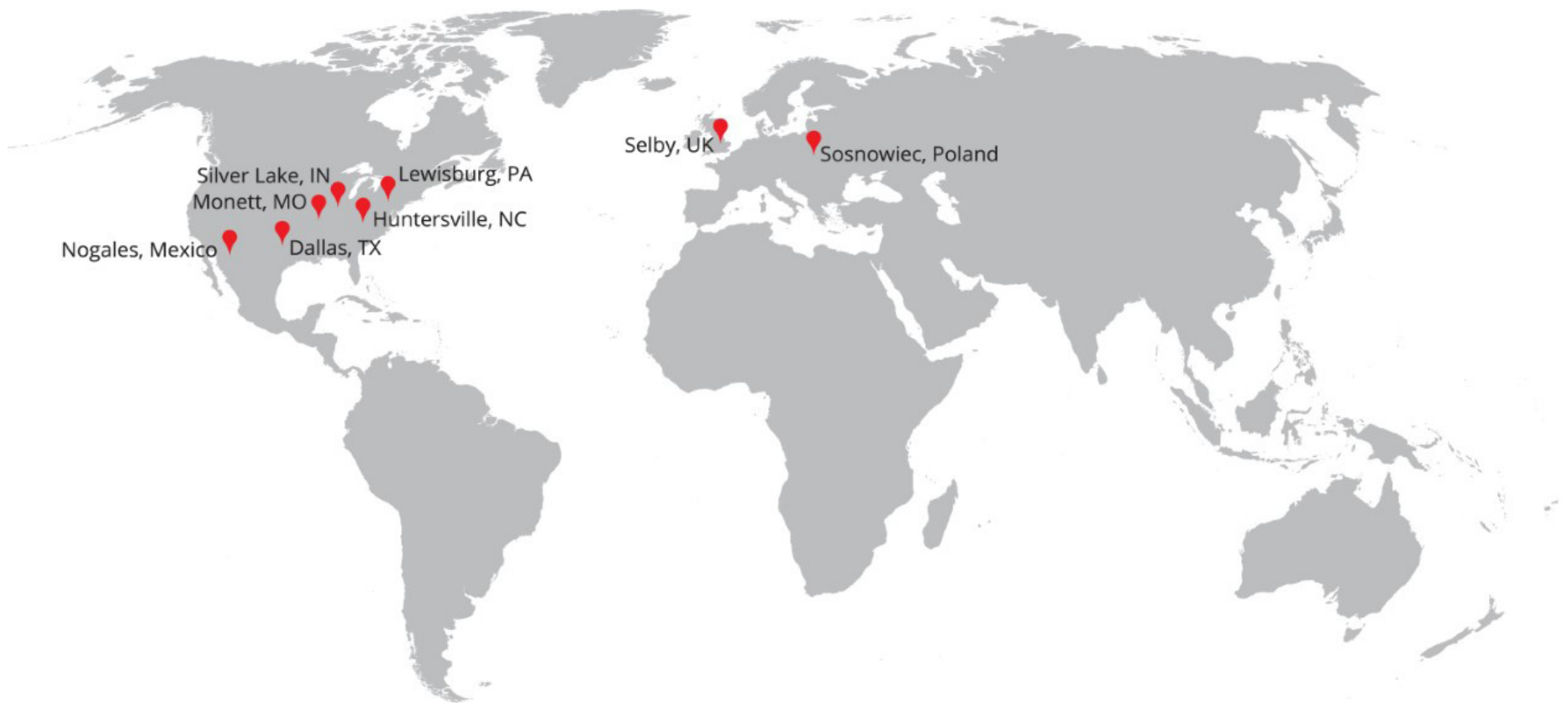
33+ 25,000+ INSTALLS
years of
service

Soft Play is a proven global leader in the contained play industry. We bring more than 30 years of experience and industry knowledge that is unmatched. Through unique play designs, a passion for quality and safety, and the uncompromising commitment to our clients' success, we build play spaces that attract and engage families day after day.

CONFIDENTIAL. SOFT PLAY, LLC. NOT FOR DISTRIBUTION.

OUR GLOBAL MANUFACTURING FOOTPRINT

Soft Play is a division of PlayPower, Inc., one of the largest playground and recreation companies in the world. The PlayPower family of brands has hundreds of years of combined experience bringing play and recreation to life.



HAGS®



WABASH VALLEY

CONFIDENTIAL. SOFT PLAY, LLC. NOT FOR DISTRIBUTION.



OUR DIFFERENCE IS YOUR ADVANTAGE

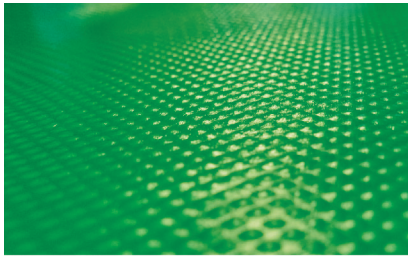
As a global leader in the play industry for more than 33 years, Soft Play combines innovation with performance, delivers superior quality and safety, represents a lasting value and has little impact on the environment. Our products are made to meet or exceed industry quality, safety and environmental standards, including::

- ISO 9001-2000
- ISO 14001
- OHSAS 18001
- ASTM 1918
- Consumer Product Safety Improvement Act

CONFIDENTIAL. SOFT PLAY, LLC. NOT FOR DISTRIBUTION.

HIGH QUALITY MATERIALS

Designed for durability, cleanability and visibility

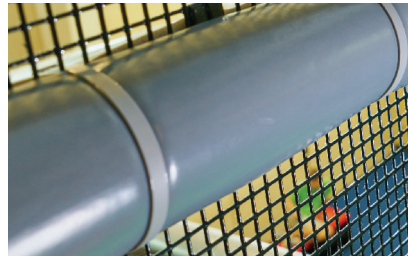


Rotational Molded Deck Systems

Provide greater durability and longer life

Modernize the structure's appearance

Add the sensory benefit of textured surfaces



TuffSkin Post Pad

Durable, lightweight, affordable polyethylene padding

Increases resistance to the elements

Provides safer play for kids



TuffNet™

Improves visibility and the structure's appearance

Durable and maintenance free

Resistant to vandalism and tearing

Talk to a Soft Play sales representative for more detailed information about our materials.

CONFIDENTIAL. SOFT PLAY, LLC. NOT FOR DISTRIBUTION.

THANK YOU!



softplay.com

Soft Play, Inc. is a Division of PlayPower, Inc. | © Soft Play, LLC.

CONFIDENTIAL. SOFT PLAY, LLC. NOT FOR DISTRIBUTION.

RESOLUTION 2021-313

WHEREAS, the City of Grand Island issued a Request for Proposals (RFP) for a New Indoor Playground at the Community Fieldhouse; and

WHEREAS, two (2) request for proposals were received; and

WHEREAS, Crouch Recreation from Omaha, Nebraska, submitted a proposal for such project in accordance with the Request for Proposals; and

WHEREAS, a contract amount of \$211,504.00 has been negotiated; and

WHEREAS, such project will be funded through the Food and Beverage Tax.

NOW, THEREFORE, BE IT RESOLVED BY THE MAYOR AND COUNCIL OF THE CITY OF GRAND ISLAND, NEBRASKA, that the proposal from Crouch Recreation from Omaha, Nebraska for a New Indoor Playground at the Community Fieldhouse is hereby approved.

- - -

Adopted by the City Council of the City of Grand Island, Nebraska, November 9, 2021.

Roger G. Steele, Mayor

Attest:

RaNae Edwards, City Clerk

Approved as to Form	▣ _____
November 6, 2021	▣ City Attorney