



# City of Grand Island

Tuesday, September 14, 2021

Council Session

## Item E-2

### **Public Hearing on Acquisition of Public Sanitary Sewer Easement in Bosselman Crossing Subdivision- 3436 S Locust Street (Bosselman Pump & Pantry, Inc.)**

*Council action will take place under Consent Agenda item G-20.*

Staff Contact: John Collins, P.E. - Public Works Director

# **Council Agenda Memo**

**From:** Keith Kurz PE, Assistant Public Works Director

**Meeting:** September 14, 2021

**Subject:** Public Hearing on Acquisition of Public Easement in Bosselman Crossing Subdivision- 3436 S Locust Street (Bosselman Pump & Pantry, Inc.)

**Presenter(s):** John Collins PE, Public Works Director

## **Background**

Nebraska State Statutes stipulate that the acquisition of property requires a public hearing to be conducted with the acquisition approved by the City Council.

Public easements were dedicated with the original plat of Bosselman Crossing Subdivision, before site design was complete. The initial location of the sanitary sewer easement was estimated and needs to be relocated, therefore City Council is being asked at tonight's meeting to vacate the initial easement and acquire a new one in the appropriate location. A sketch is attached to show the easement area.

## **Discussion**

To allow for proper location of the sanitary sewer easement in Bosselman Crossing Subdivision it is requested that the initially dedicated sanitary sewer easement be vacated with acquisition of the appropriate location by the City of Grand Island, according to the attached sketch.

There will be no cost of such action to the City.

## **Alternatives**

It appears that the Council has the following alternatives concerning the issue at hand. The Council may:

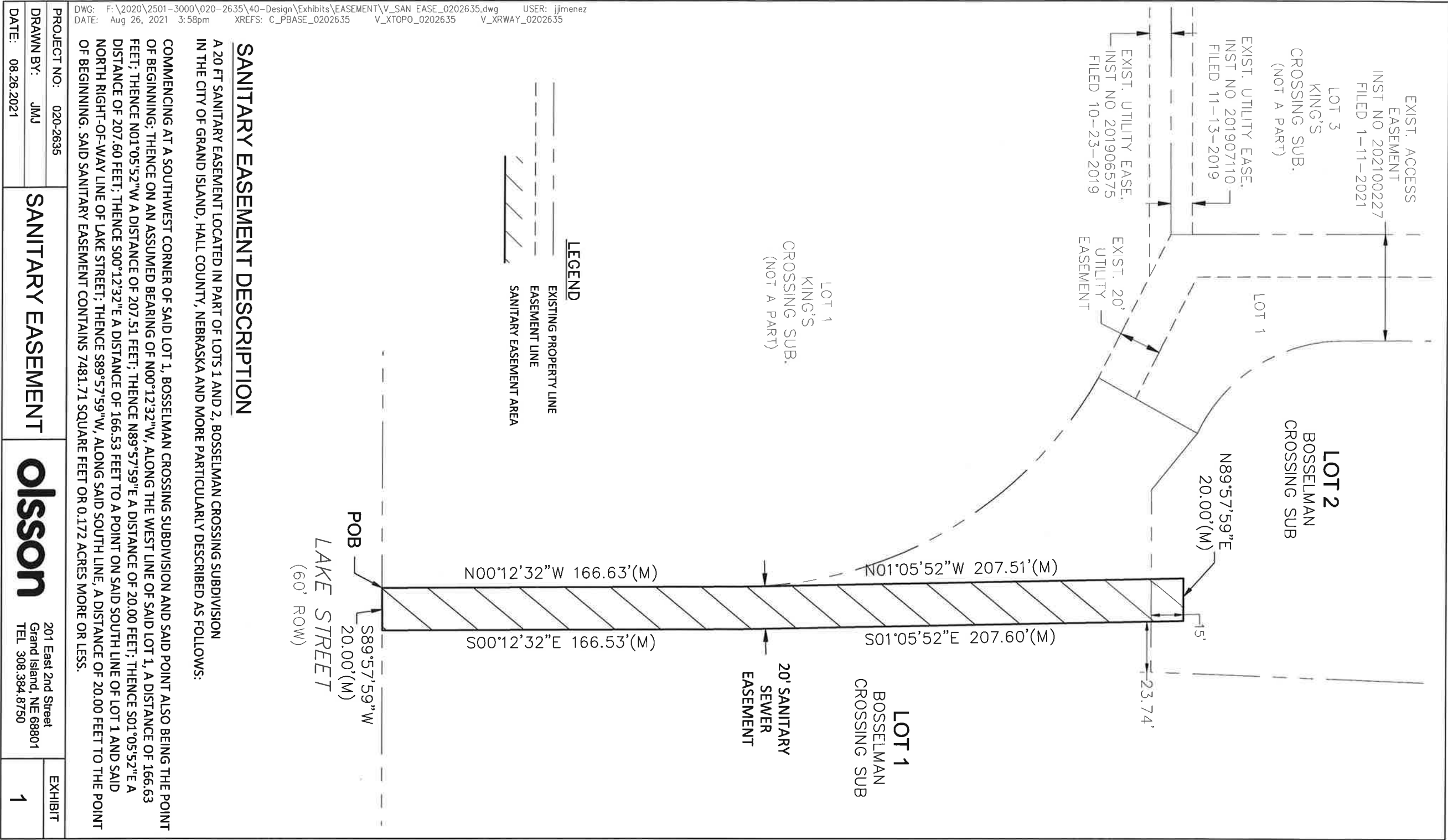
1. Move to approve
2. Refer the issue to a Committee
3. Postpone the issue to future date
4. Take no action on the issue

## **Recommendation**

City Administration recommends that the Council approve the acquisition of the sanitary sewer easement.

## **Sample Motion**

Motion to approve the resolution.



SANITARY EASEMENT DESCRIPTION

A 20 FT SANITARY EASEMENT LOCATED IN PART OF LOTS 1 AND 2, BOSELMAN CROSSING SUBDIVISION IN THE CITY OF GRAND ISLAND, HALL COUNTY, NEBRASKA AND MORE PARTICULARLY DESCRIBED AS FOLLOWS:

COMMENCING AT A SOUTHWEST CORNER OF SAID LOT 1, BOSELMAN CROSSING SUBDIVISION AND SAID POINT ALSO BEING THE POINT OF BEGINNING; THENCE ON AN ASSUMED BEARING OF N00°12'32"W, ALONG THE WEST LINE OF SAID LOT 1, A DISTANCE OF 166.63 FEET; THENCE N01°05'52"W A DISTANCE OF 207.51 FEET; THENCE N89°57'59"E A DISTANCE OF 20.00 FEET; THENCE S01°05'52"E A DISTANCE OF 207.60 FEET; THENCE S00°12'32"E A DISTANCE OF 166.53 FEET TO A POINT ON SAID SOUTH LINE OF LOT 1 AND SAID NORTH RIGHT-OF-WAY LINE OF LAKE STREET; THENCE S89°57'59"W, ALONG SAID SOUTH LINE, A DISTANCE OF 20.00 FEET TO THE POINT OF BEGINNING. SAID SANITARY EASEMENT CONTAINS 7481.71 SQUARE FEET OR 0.172 ACRES MORE OR LESS.