



# City of Grand Island

Tuesday, April 27, 2021

Council Session

## Item G-14

### **#2021-100 - Approving Updated Parking Regulations**

Staff Contact: John Collins, P.E. - Public Works Director

# Council Agenda Memo

**From:** Keith Kurz PE, Assistant Public Works Director

**Meeting:** April 27, 2021

**Subject:** Consideration of Approving Updated Parking Regulations

**Presenter(s):** John Collins PE, Public Works Director

## Background

Council action is required to designate parking restrictions on any public street. As changes are approved the City Council will also approve the master list of parking designations/restrictions.

## Discussion

The Public Works Department received a written request from the Railside Business Improvement District asking that the twenty (20) minute parking restriction in front of 515 West 3<sup>rd</sup> Street be removed. The subject property is vacant and removal of the parking restriction would allow for additional parking for businesses in this block.

Upon evaluation, it was determined that the twenty (20) minute parking restriction is no longer necessary and the area businesses would be better served by eliminating the time restriction.

The Public Works Department also received a phone request from the business owner of 124 West 4<sup>th</sup> Street requesting a two (2) hour parking time restriction on Locust Street, on the west side of the building. Per the owner there is very little turnover of parking on this block, leaving limited parking for customers.

## Alternatives

It appears that the Council has the following alternatives concerning the issue at hand. The Council may:

1. Move to approve
2. Refer the issue to a Committee
3. Postpone the issue to future date
4. Take no action on the issue

## **Recommendation**

City Administration recommends that the Council approve the resolution removing the twenty (20) minute parking restriction in front of 515 West 3<sup>rd</sup> Street and adding a two (2) hour parking time restriction on Locust Street, on the west side of 124 West 4<sup>th</sup> Street.

## **Sample Motion**

Move to approve the resolution.



201 West Third St. Suite 2, Grand Island, NE 68801  
308-398-7022 [arriverailside.com](http://arriverailside.com)

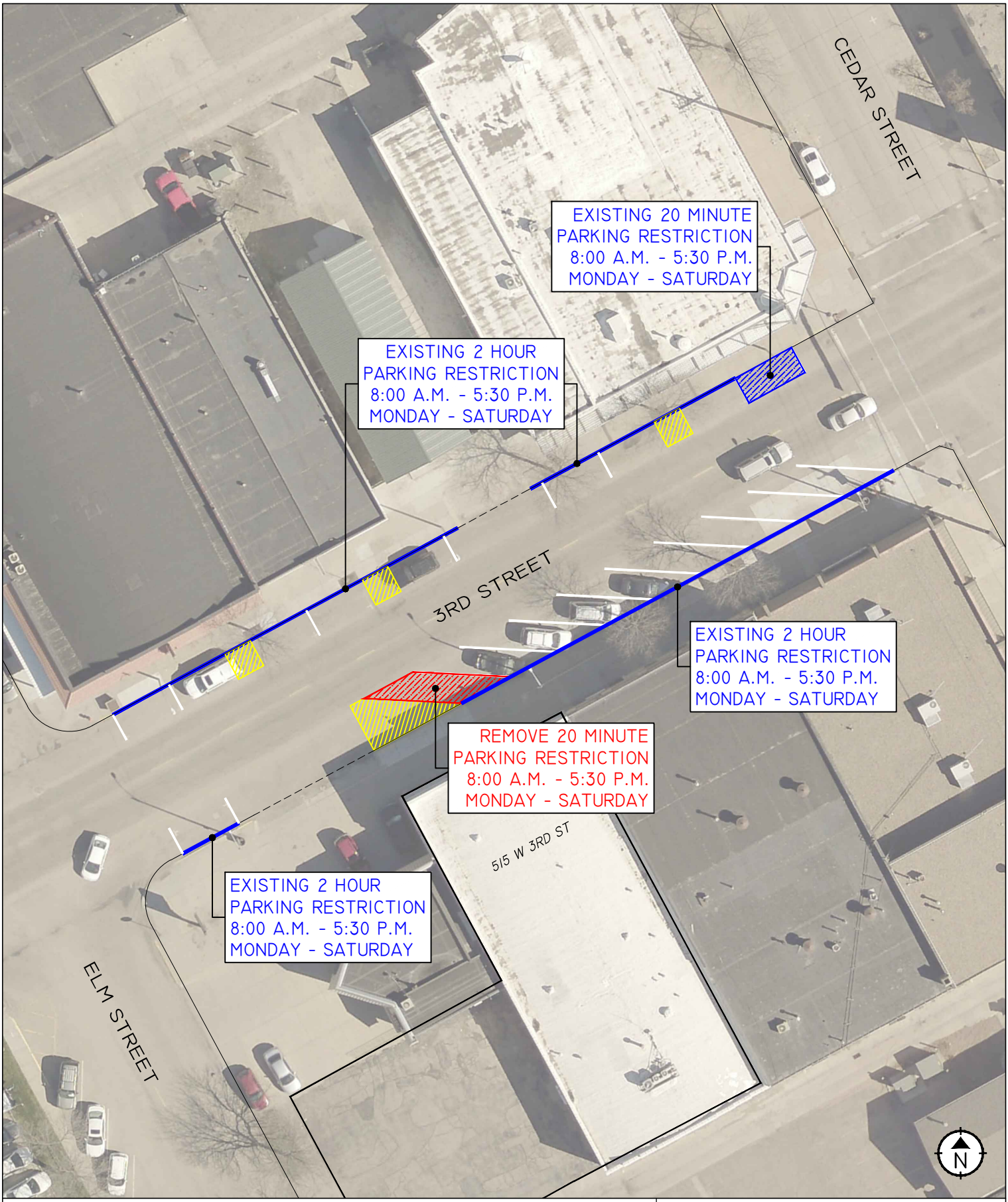
---

April 5, 2021

The Railside Business Improvement District is requesting the 20 Minute parking sign located at 515 West Third Street be removed. This address is currently vacant. Removing this restriction would allow for additional parking for businesses in this block.

Thank you,

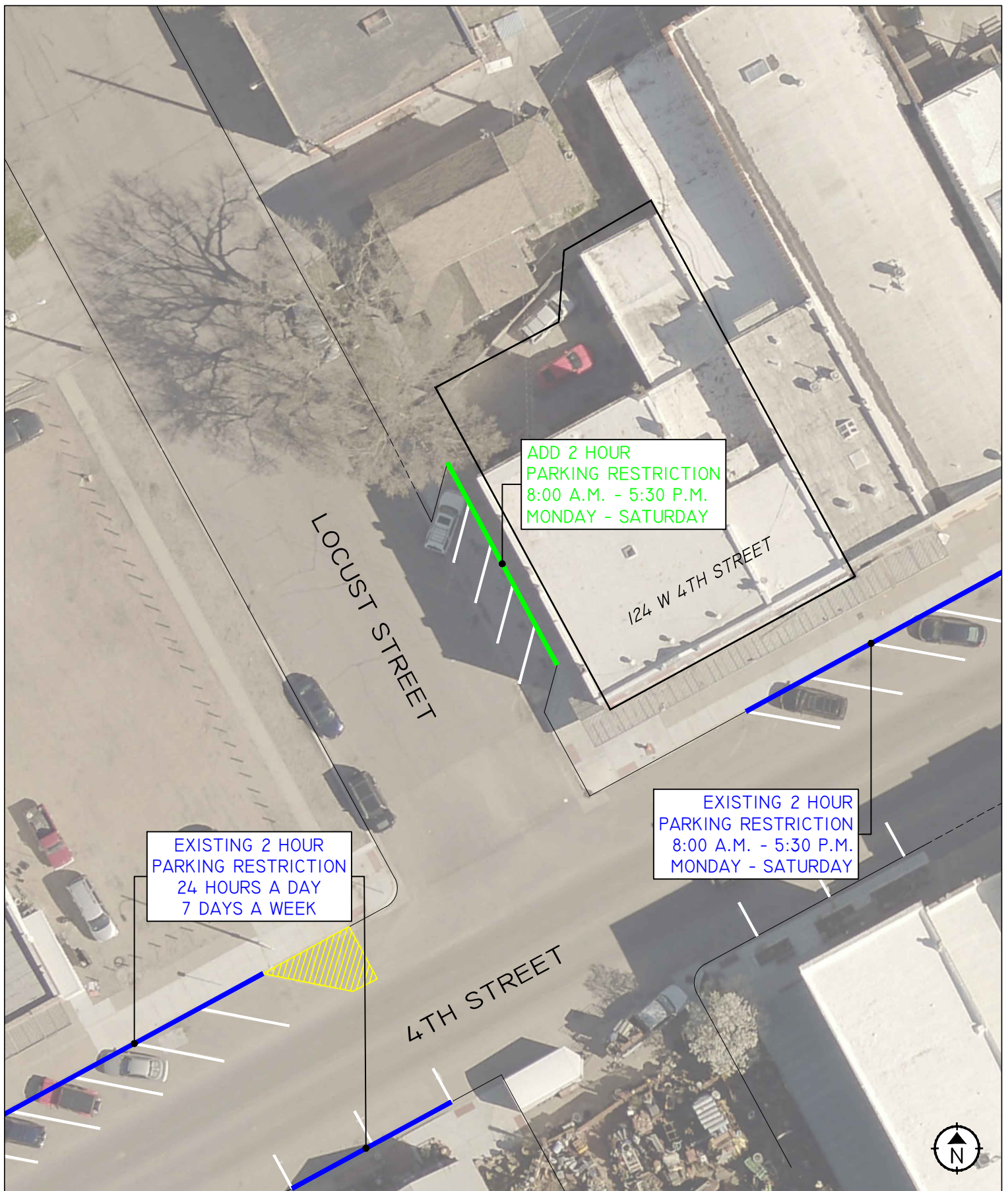
Sherry Siwinski  
Executive Director



# PARKING RESTRICTION REMOVAL

COUNCIL RESOLUTION EXHIBIT  
GRAND ISLAND, NEBRASKA





## PARKING RESTRICTION ADDITION

COUNCIL RESOLUTION EXHIBIT  
GRAND ISLAND, NEBRASKA

**CITY OF**  
**GRAND ISLAND**  
PUBLIC WORKS DEPARTMENT

RESOLUTION 2021-100

WHEREAS, the City Council, by authority of §22-77 of the Grand Island City Code, may by resolution, establish parking regulations upon the streets of the City of Grand Island; and

WHEREAS, the Public Works Department received a written request from the Railside Business Improvement District asking that the twenty (20) minute parting restriction in front of 515 West 3<sup>rd</sup> Street be removed; and

WHEREAS, the subject property is vacant and removal of the parking restriction would allow for additional parking for businesses in this block; and

WHEREAS, upon evaluation, it was determined that the twenty (20) minute parking restriction is no longer necessary and the area businesses would be better served by eliminating the time restriction; and

WHEREAS, the Public Works Department also received a phone request from the business owner of 124 West 4<sup>th</sup> Street requesting a two (2) hour parking time restriction on Locust Street, on the west side of the building; and

WHEREAS, it is recommended that twenty (20) minute parting restriction in front of 515 West 3<sup>rd</sup> Street be removed be approved; and

WHEREAS, it is also recommended that a two (2) hour parking time restriction on Locust Street, on the west side of the building addressed as 124 West 4<sup>th</sup> Street be approved.

NOW, THEREFORE, BE IT RESOLVED BY THE MAYOR AND COUNCIL OF THE CITY OF GRAND ISLAND, NEBRASKA, that parking regulations within the City of Grand Island are established as listed on the attached exhibits “Part One- No Parking; dated 2021/4/19”, “Part Two- Time Restriction Parking, dated 2021/4/19”, Part Three- Loading Zones, dated 2021/4/19”, and “Part Four- Tow Zone, dated 2021/4/19”.

BE IT FURTHER RESOLVED, that this resolution supersedes any and all other resolutions established or amending parking regulations for the City of Grand Island.

- - -

Adopted by the City Council of the City of Grand Island, Nebraska, April 27, 2021.

\_\_\_\_\_  
Roger G. Steele, Mayor

Attest:

\_\_\_\_\_  
RaNae Edwards, City Clerk

Approved as to Form	☐ _____
April 23, 2021	☐ City Attorney

PARKING RESTRICTION RESOLUTION

PART ONE - NO PARKING (2021/4/19)

Street	From	To	Side of Street	Parking Restriction Type	Parking Restriction Effective Days	Parking Restriction Effective Time
10th Street	Broadwell Avenue	135' East of Broadwell Avenue	Both	No Parking	7	24 Hr.
10th Street	90' West of Eddy Street	110' East of Eddy Street	Both	No Parking	7	24 Hr.
10th Street	160' West of Cedar Street	Cedar Street	South	No Parking	7	7:00am-4:30pm
11th Street	Wheeler Street	Pine Street	South	No Parking	7	24 Hr.
11th Street	40' West of Beal Street	40' East of Beal Street	Both	No Parking	7	24 Hr.
12th Street	Eddy Street	Pine Street	South	No Parking	7	24 Hr.
13th Street	75' East of Howard Avenue	280' West of Kruse Avenue	South	No Parking	7	24 Hr.
13th Street	100' East of Howard Avenue	350' West of Kruse Avenue	North	No Parking	7	24 Hr.
13th Street	245' West of Broadwell Avenue	Broadwell Avenue	South	No Parking	7	24 Hr.
13th Street	140' West of Broadwell Avenue	Broadwell Avenue	North	No Parking	7	24 Hr.
15th Street	Eddy Street	Elm Street	South	No Parking	7	24 Hr.
1st Street	Greenwich Street	120' East of Greenwich Street	North	No Parking	7	24 Hr.
2nd Street	Eddy Street	Cleburn Street	North	No Parking	7	24 Hr.
2nd Street	80' West of Walnut Street	Walnut Street	North	No Parking	7	24 Hr.
3rd Street	Blaine Street	220' East of Blaine Street	Both	No Parking	7	24 Hr.
3rd Street	Harrison Street	290' East of Broadwell Avenue	Both	No Parking	7	24 Hr.
3rd Street	Jefferson Street	Adams Street	North	No Parking	7	24 Hr.
3rd Street	Clark Street	Cleburn Street	Both	No Parking	7	24 Hr.
3rd Street	110' West Oak Street	Oak Street	North	No Parking	7	24 Hr.
4th Street	195' West of Eddy Street	Eddy Street	North	No Parking	7	24 Hr.
4th Street	Eddy Street	Cleburn Street	Both	No Parking	7	24 Hr.
4th Street	35' West of Oak Street	Oak Street	South	No Parking	7	24 Hr.
4th Street	45' West of Oak Street	35' East of Oak Street	North	No Parking	7	24 Hr.
6th Street	Broadwell Avenue	Madison Street	Both	No Parking	7	24 Hr.
6th Street	Sycamore Street	Kimball Street	South	No Truck Parking	7	24 Hr.
7th Street	Darr Avenue	White Avenue	South	No Parking	7	24 Hr.
Anderson Avenue	Alley West of Locust Street	Locust Street	South	No Parking	7	8:00pm-7:00am
Anna Street	Broadwell Avenue	Madison Street	Both	No Parking	7	24 Hr.
Anna Street	Madison Street	Adams Street	North	No Parking	7	24 Hr.
Anna Street	Eddy Street	Cleburn Street	Both	No Parking	7	24 Hr.
Anna Street	Elm Street	Locust Street	Both	No Parking	7	24 Hr.
Bismark Road	Locust Street	Pine Street, South Leg	Both	No Parking	7	24 Hr.



PARKING RESTRICTION RESOLUTION

PART ONE - NO PARKING (2021/4/19)

Street	From	To	Side of Street	Parking Restriction Type	Parking Restriction Effective Days	Parking Restriction Effective Time
Blaine Street	Stolley Park Road	Del Monte Avenue	West	No Parking	7	24 Hr.
Blaine Street	110' North of 2nd Street	3rd Street	East	No Parking	7	24 Hr.
Boggs Avenue	7th Street	Baumann Drive	East	No Parking	7	24 Hr.
Brahma Street	40' South of Wyandotte Street	Wyandotte Street	East	No Parking	7	24 Hr.
Capital Avenue	80' East of Engleman Road	180' East of Engleman Road	North	No Parking	7	24 Hr.
Capital Avenue	Independence Avenue	Macron Street	North	No Parking	7	24 Hr.
Charles Street	Locust Street	Pine Street	North	No Parking	7	24 Hr.
Charles Street	Locust Street	55' East of Locust Street	South	No Parking	7	24 Hr.
College Street	Webb Road	Sheridan Avenue	Both	No Parking	7	24 Hr.
College Street	Custer Avenue	Lafayette Avenue	Both	No Parking	7	7:00am-4:00pm
Custer Avenue	75' South of North Front Street	75' North of North Front Street	Both	No Parking	7	24 Hr.
Custer Avenue	Faidley Avenue	185' North of 8th Street	East	No Parking	7	24 Hr.
Custer Avenue	235' South of 13th Street	50' south of 14th Street	Both	No Parking	7	24 Hr.
Custer Avenue	75' South of Vandergrift Avenue	16th Street	West	No Parking	7	24 Hr.
Custer Avenue	200' South of State Street	200' North of State Street	Both	No Parking	7	24 Hr.
Custer Avenue	375' North of College Street	475' North of College Street	East	No Parking	7	24 Hr.
Darr Avenue	5th Street	6th Street	East	No Parking	7	24 Hr.
Darr Avenue	75' South of 7th Street	7th Street	West	No Parking	7	24 Hr.
Darr Avenue	30' South of 7th Street	7th Street	East	No Parking	7	24 Hr.
Delaware Street	Locust Street	Alley East of Locust Street	Both	No Parking	7	10:00pm-5:00am
Delta Street	Lincoln Avenue	145' East of Lincoln Avenue	South	No Parking	7	24 Hr.
Eddy Street	Hedde Street	Fonner Park Road	East	No Parking	7	11:00pm-5:00am
Eddy Street	Fonner Park Road	200' North of Fonner Park Road	East	No Parking	7	24 Hr.
Eddy Street	Eddy Street & Greenwich Street Intersection	50' North of the Eddy Street & Greenwich Street Intersection	West	No Parking	7	24 Hr.
Eddy Street	170' South of Koenig Street	Division Street	West	No Parking	7	24 Hr.
Eddy Street	50' South of Koenig Street	1st Street	East	No Parking	7	24 Hr.
Eddy Underpass Frontage Road West	North Front Street	4th Street	Both	No Parking	7	24 Hr.
Eddy Underpass Frontage Road East	North Front Street	4th Street	Both	No Parking	7	24 Hr.
Elm Street	125' South of South Union Pacific Railroad Mainline Track	Union Pacific Railroad	Both	No Parking	7	24 Hr.
Elm Street	10th Street	12th Street	West	No Parking	7	24 Hr.
Engleman Road	Capital Avenue	75' North of Capital Avenue	East	No Parking	7	24 Hr.
Exchange Road	D [REDACTED]	[REDACTED]	[REDACTED]	No Parking	7	24 Hr.

PARKING RESTRICTION RESOLUTION

PART ONE - NO PARKING (2021/4/19)

Street	From	To	Side of Street	Parking Restriction Type	Parking Restriction Effective Days	Parking Restriction Effective Time
Faidley Avenue	Custer Avenue	Carey Street	Both	No Parking	7	24 Hr.
Faidley Avenue	155' West Broadwell Avenue	Broadwell Avenue	South	No Parking	7	24 Hr.
Faidley Avenue	120' West Broadwell Avenue	Broadwell Avenue	North	No Parking	7	24 Hr.
Fonner Park Road	Locust Street	Sycamore Street	Both	No Parking	7	24 Hr.
Forrest Street	Custer Avenue	Lafayette Avenue	South	No Parking	7	7:30am-4:00pm
Greenwich Street	Fonner Park Road	250' North of Fonner Park Road	West	No Parking	7	24 Hr.
Hedde Street	Eddy Street	Locust Street	Both	No Parking	7	11:00pm-5:00am
Holcomb Street	110' West of Bantam Street	Bantam Street	South	No Parking	7	24 Hr.
Jefferson Street	3rd Street	South Front Street	Both	No Parking	7	24 Hr.
Koenig Street	30' West of Eddy Street	Eddy Street	South	No Parking	7	24 Hr.
Koenig Street	55' West of Eddy Street	150' East of Eddy Street	North	No Parking	7	24 Hr.
Koenig Street	60' West of Walnut Street	Walnut Street	South	No Parking	7	24 Hr.
Koenig Street	Pine Street	Oak Street	South	No Parking	7	24 Hr.
Koenig Street	Louise Street	90' North of Louise Street	East	No Parking	7	24 Hr.
Koenig Street	Louise Street	130' North of Louise Street	West	No Parking	7	24 Hr.
Lafayette Avenue	College Street	Forrest Street	West	No Parking	7	7:30am-4:00pm
Lincoln Avenue	90' North of Delta Street	195' North of Delta Street	East	No Parking	7	24 Hr.
Lincoln Avenue	2nd Street	3rd Street	West	No Parking	7	24 Hr.
Locust Street	Charles Street	1st Street	Both	No Parking	7	24 Hr.
Locust Street	10th Street	12th Street	West	No Parking	7	24 Hr.
Louise Street	Koenig Street	90' North of Koenig Street	West	No Parking	7	24 Hr.
Louise Street	Koenig Street	110' North of Koenig Street	East	No Parking	7	24 Hr.
Manchester Road	Independence Avenue	Mansfield Road	Both	No Parking	7	24 Hr.
Mansfield Road	Cannon Road	Manchester Road	Both	No Parking	7	24 Hr.
Mansfield Road	Concrete Section	Horseshoe Place	East	No Parking	7	24 Hr.
Mansfield Road	Horseshoe Place	Hike/Bike Trail	East	No Parking	7	24 Hr.
Marian Road	15' North of GIPS Fence Gate	20' East of GIPS Fence Gate	West/South	No Parking	7	24 Hr.
North Front Street	Webb Road	Eisenhower Drive	Both	No Parking	7	24 Hr.
North Front Street	Broadwell Avenue	140' West of Monroe Street	North	No Parking	7	24 Hr.
North Front Street	148' West of Lincoln Avenue	Lincoln Avenue	South	No Parking	7	24 Hr.
North Front Street	150' West of Clark Street	Clark Street	South	No Parking	7	24 Hr.
Oklahoma Avenue	80' West of Broadwell Avenue	Broadwell Avenue	North	No Parking	7	24 Hr.

PARKING RESTRICTION RESOLUTION

PART ONE - NO PARKING (2021/4/19)

Street	From	To	Side of Street	Parking Restriction Type	Parking Restriction Effective Days	Parking Restriction Effective Time
Oklahoma Avenue	30' West of Broadwell Avenue	Broadwell Avenue	South	No Parking	7	24 Hr.
Old Highway 30	Industrial Lane	US Highway 30 (West of Overpass)	North	No Parking	7	24 Hr.
Old Lincoln Highway	Carey Avenue	Broadwell Avenue	South	No Parking	7	24 Hr.
Old Lincoln Highway	Garfield Avenue	Broadwell Avenue	North	No Parking	7	24 Hr.
Old Potash Highway	Piper Street	565' West of Custer Avenue	North	No Parking	7	24 Hr.
Orleans Drive	Faidley Avenue	215' North of Faidley Avenue	East	No Parking	7	24 Hr.
Oxnard Avenue	Eddy Street	Locust Street	Both	No Parking	7	11:00pm-5:00am
Park Drive	Blaine Street	500' East of Blaine Street	Both	No Parking	7	12:00pm-9:00pm
Phoenix Avenue	1/2 Block West of Locust Street	Locust Street	Both	No Parking	7	24 Hr.
Pine Street	Bismark Road	Ashton Avenue	East	No Parking	7	24 Hr.
Pine Street	Schuff Street	Ashton Avenue	West	No Parking	7	8:00pm-6:00am
Pine Street	115' South of Koenig Street	Koenig Street	West	No Parking	7	24 Hr.
Pine Street	145' South of Court Street	Court Street	West	No Parking	7	24 Hr.
Pine Street	70' South of South Front Street	South Front Street	West	No Parking	7	24 Hr.
Piper Street	Old Potash Highway	495' North of Old Potash Highway	East	No Parking	Mon-Fri	7:00am-7:00pm
Prospect Street	Lafayette Avenue	Park Avenue	Both	No Parking	Mon-Fri	7:00am-4:00pm
Ramada Road	US Highway 34	Woodland Drive	Both	No Parking	7	8:00pm-6:00am
Riverside Drive	Hagge Avenue	Stolley Park Road	Both	No Parking	7	24 Hr.
Roberts Street	Broadwell Avenue	250' East of Broadwell Avenue	Both	No Parking	7	24 Hr.
Roberts Street	420' East of Broadwell Avenue	330' East of Roberts Court	North	No Trailer Parking	7	24 Hr.
Schimmer Drive	US Highway 281	350' East of US Highway 281	North	No Parking	7	24 Hr.
Sky Park Road	Airport Road	Abbot Road	Both	No Parking	7	24 Hr.
South Front Street	Walnut Street	95' East of Pine Street	North	No Parking	7	24 Hr.
South Front Street	475' West of Locust Street	Locust Street	South	No Parking	7	24 Hr.
South Street	Locust Street	Pine Street	Both	No Parking	7	8:00pm-5:00am
State Street	US Hwy 281	350' East of Webb Road	Both	No Parking	7	24 Hr.
State Street	185' West of Custer Avenue	215' East of Custer Avenue	South	No Parking	7	24 Hr.
State Street	185' West of Custer Avenue	Broadwell Avenue	North	No Parking	7	24 Hr.
State Street	190' East of Lafayette Avenue	Broadwell Avenue	South	No Parking	7	24 Hr.
State Street	Cleburn Street	280' East of Cleburn Street	South	No Parking	7	24 Hr.
Stoeger Drive	Baumann Drive	7th Street	South	No Parking	7	24 Hr.
Stolley Park Road	US Highway 281	Stolley Road	Both	No Parking	7	24 Hr.

**PARKING RESTRICTION RESOLUTION**

**PART ONE - NO PARKING (2021/4/19)**

Street	From	To	Side of Street	Parking Restriction Type	Parking Restriction Effective Days	Parking Restriction Effective Time
Stuhr Road	Stolley Park Road	Bismark Road	Both	No Parking	7	24 Hr.
Stuhr Road	Burlington Northern Railroad	City Outfall Ditch	Both	No Parking	7	24 Hr.
Swift Road	Stuhr Road	West boundary of WWTP	Both	No Parking	7	24 Hr.
Sycamore Street	Ashton Avenue	1st Street	West	No Parking	7	24 Hr.
Sycamore Street	5th Street	6th Street	East	No Parking	7	24 Hr.
Sycamore Underpass Frontage Road West	3rd Street	4th Street	Both	No Parking	7	24 Hr.
Sycamore Underpass Frontage Road East	3rd Street	4th Street	Both	No Parking	7	24 Hr.
US Highway 34	US Highway 281	Union Pacific Railroad	Both	No Parking	7	24 Hr.
Vine Street	80' South of Meves Avenue	Meves Avenue	East	No Parking	7	24 Hr.
Walnut Street	1st Street	2nd Street	West	No Parking	7	24 Hr.
Webb Road	Westside Street	300' North of State Street	Both	No Parking	7	24 Hr.
Wedgewood Drive	Locust Street	Bellwood Drive	Both	No Parking	7	11:00pm-5:00am
Wheeler Avenue	Division Street	115' North of Division Street	East	No Parking	7	24 Hr.
Wheeler Avenue	10th Street	17th Street	Both	No Parking	7	24 Hr.
Wheeler Avenue	80' South of 23rd Street	280' North of 23rd Street	West	No Parking	7	8:00am-4:30pm
Wheeler Avenue	22nd Street	Capital Avenue	East	No Parking	7	
William Street	155' South of Hagge Avenue	Stolley Park Road	West	No Parking	7	24 Hr.
Windolph Avenue	Eddy Street	Locust Street	Both	No Parking	7	11:00pm-5:00am
Woodland Drive	Ramada Road	Locust Street	Both	No Parking	7	8:00pm-6:00am
Wyandotte Street	Brahma Street	Chanticleer Street	South	No Parking	7	24 Hr.

**STATE FAIR PARKING RESTRICTIONS**

Fonner Park Road	Locust Street	Stuhr Road	Both	No Parking	7	24 Hr.
Stolley Park Road	500' West of Adams Street	Locust Street	Both	No Parking	7	24 Hr.
Stolley Park Road	1/2 mile West of Stuhr Road	Stuhr Road	Both	No Parking	7	24 Hr.
Stuhr Road	Wood River	Bismark Road	Both	No Parking	7	24 Hr.

PARKING RESTRICTION RESOLUTION

PART TWO - TIME RESTRICTION PARKING (2021/4/19)

Street	From	To	Side of Street	Parking Restriction Type	Parking Restriction Effective Days	Parking Restriction Effective Time
1st Street	40' East of Cedar Street	60' East of Cedar Street	North	20 min.	Mon-Sat	8:00am-5:30pm
2nd Street	Walnut Street	Pine Street	North	2 HR	Mon-Sat	8:00am-5:30pm
3rd Street	122' East of Elm Street	142' East of Elm Street	South	20 min.	Mon-Sat	8:00am-5:30pm
3rd Street	Elm Street	Kimball Street	South	2 HR	Mon-Sat	8:00am-5:30pm
3rd Street	Elm Street	58' West of Cedar Street	North	2 HR	Mon-Sat	8:00am-5:30pm
3rd Street	58' West of Cedar Street	Cedar Street	North	20 min.	Mon-Sat	8:00am-5:30pm
3rd Street	Cedar Street	173' West of Walnut Street	North	2 HR	Mon-Sat	8:00am-5:30pm
3rd Street	173' West of Walnut Street	156' West of Walnut Street	North	20 min.	Mon-Sat	8:00am-5:30pm
3rd Street	156' West of Walnut Street	60' West of Walnut Street	North	2 HR	Mon-Sat	8:00am-5:30pm
3rd Street	60' West of Walnut Street	Walnut Street	North	20 min.	Mon-Sat	8:00am-5:30pm
3rd Street	Walnut Street	Sycamore Street	North	2 HR	Mon-Sat	8:00am-5:30pm
3rd Street	160' East of Sycamore Street	390' East of Sycamore Street	North	15 min.	Mon-Fri	7:00am-5:30pm
4th Street	145' East of Cedar Street	Wheeler Avenue	South	2 HR	Mon-Sat	8:00am-5:30pm
4th Street	Cedar Street	Wheeler Avenue	North	2 HR	Mon-Sat	8:00am-5:30pm
4th Street	Wheeler Avenue	Locust Street	Both	2 HR	7	24 Hr.
4th Street	Locust Street	Sycamore Street	North	2 HR	Mon-Sat	8:00am-5:30pm
4th Street	120' West of Kimball Avenue	30' West of Kimball Avenue	South	2 HR	7	24 Hr.
Cedar Street	2nd Street	295' North of 3rd Street	West	2 HR	Mon-Sat	8:00am-5:30pm
Cedar Street	80' North of 2nd Street	295' North of 3rd Street	East	2 HR	Mon-Sat	8:00am-5:30pm
College Street	Lafayette Avenue	Park Avenue	Both	2 HR	Mon-Fri	8:00am-4:00pm
Elm Street	North Front Street	4th Street	East	2 HR	7	24 Hr.
Forrest Street	Kruse Avenue	148' East of Kruse Avenue	North	2 HR	Mon-Fri	8:00am-4:00pm
Kruse Avenue	Forrest Street	Cottage Street	East	2 HR	Mon-Fri	8:00am-4:00pm
Locust Street	43' North of 1st Street	64' North of 1st Street	West	20 min.	Mon-Sat	8:00am-5:30pm
Locust Street	64' North of 1st Street	56' South of 2nd Street	West	2 HR	Mon-Sat	8:00am-5:30pm
Locust Street	56' South of 2nd Street	38' South of 2nd Street	West	20 min.	Mon-Sat	8:00am-5:30pm
Locust Street	2nd Street	134' South of 3rd Street	West	2 HR	Mon-Sat	8:00am-5:30pm
Locust Street	134' South of 3rd Street	120' South of 3rd Street	West	20 min.	Mon-Sat	8:00am-5:30pm

PARKING RESTRICTION RESOLUTION

PART TWO - TIME RESTRICTION PARKING (2021/4/19)

Street	From	To	Side of Street	Parking Restriction Type	Parking Restriction Effective Days	Parking Restriction Effective Time
Locust Street	120' South of 3rd Street	83' North of 3rd Street	West	2 HR	Mon-Sat	8:00am-5:30pm
Locust Street	83' North of 3rd Street	120' North of 3rd Street	West	20 min.	Mon-Sat	8:00am-5:30pm
Locust Street	120' North of 3rd Street	South Front Street	West	2 HR	Mon-Sat	8:00am-5:30pm
Locust Street	1st Street	125 North of 2nd Street	East	2 HR	Mon-Sat	8:00am-5:30pm
Locust Street	125' North of 2nd Street	142' North of 2nd Street	East	20 min.	Mon-Sat	8:00am-5:30pm
Locust Street	142' North of 2nd Street	40' South of 3rd Street	East	2 HR	Mon-Sat	8:00am-5:30pm
Locust Street	40' South of 3rd Street	25' South of 3rd Street	East	20 min.	Mon-Sat	8:00am-5:30pm
Locust Street	3rd Street	South Front Street	East	2 HR	Mon-Sat	8:00am-5:30pm
<b>Locust Street</b>	<b>4th Street</b>	<b>82' North of 4th Street</b>	<b>East</b>	<b>2 HR</b>	<b>Mon-Sat</b>	<b>8:00am-5:30pm</b>
Park Avenue	125' South of College Street	Forrest Street	West	2 HR	Mon-Fri	8:00am-4:00pm
Park Avenue	125' North of College Street	Forrest Street	East	2 HR	Mon-Fri	8:00am-4:00pm
Pine Street	Koenig Street	145' South of Court Street	West	2 HR	7	24 Hr.
Pine Street	Court Street	90' South of South Front Street	West	2 HR	Mon-Sat	8:00am-5:30pm
Pine Street	Court Street	40' North of 3rd Street	East	2 HR	Mon-Sat	8:00am-5:30pm
Pine Street	40' North of 3rd Street	57' North of 3rd Street	East	20 min.	Mon-Sat	8:00am-5:30pm
Pine Street	57' North of 3rd Street	South Front Street	East	2 HR	Mon-Sat	8:00am-5:30pm
Tilden Street	US Highway 30	100' North of US Highway 30	East	1 HR	7	24 Hr.
Walnut Street	2nd Street	120' South of 3rd Street	West	2 HR	Mon-Sat	8:00am-5:30pm
Walnut Street	110' South of 3rd Street	109' South of South Front Street	West	2 HR	Mon-Sat	8:00am-5:30pm
Walnut Street	265' North of the north set of UPRR tracks	4th Street	West	2 HR	Mon-Sat	8:00am-5:30pm
Walnut Street	2nd Street	90' South of South Front Street	East	2 HR	Mon-Sat	8:00am-5:30pm
Walnut Street	150' North of the North set of UPRR tracks	63' South of 4th Street	East	2 HR	Mon-Sat	8:00am-5:30pm
Walnut Street	63' South of 4th Street	4th Street	East	20 min.	Mon-Sat	8:00am-5:30pm
Walnut Street	70' North of 4th Street	125' North of 4th Street	East	20 min.	Mon-Sat	8:00am-5:30pm
Wheeler Avenue	280' South of Division Street	3rd Street	West	2 HR	Mon-Sat	8:00am-5:30pm
Wheeler Avenue	167' North of Division Street	3rd Street	East	2 HR	Mon-Sat	8:00am-5:30pm

**PARKING RESTRICTION RESOLUTION  
PART THREE - LOADING ZONES (2021/4/19)**

Street	From	To	Side of Street	Parking Restriction Type	Parking Restriction Effective Days	Parking Restriction Effective Time
10th Street	Cedar Street	64' East of Cedar Street	South	Loading Zone	7	7:00am-4:30pm
12th Street	110' East of Wheeler Street	140' East of Wheeler Street	North	Loading Zone	7	24 Hr
3rd Street	220' West of Oak Street	110' West of Oak Street	North	Loading Zone	7	24 Hr
7th Street	Lincoln Avenue	52' East of Lincoln Avenue	South	Loading Zone	Mon-Fri	7:30am-5:30pm
Beal Street	8th Street	9th Street	East	Loading Zone	Mon-Fri	8:00am-5:00pm
Bismark Street	Oak Street	Vine Street	North	Loading Zone	7	24 Hr
Charles Street	94' East of Locust Street	172' East of Locust Street	South	Loading Zone	7	24 Hr
Cleburn Street	North Front Street	74' North of North Front Street	East	Loading Zone	7	24 Hr
Eddy Street	250' South of Hedde Street	175' South of Hedde Street	East	Loading Zone	7	24 Hr
Kennedy Drive	35' North of Faidley Avenue	80' North of Faidley Avenue	East	Loading Zone	7	24 Hr
Oak Street	Bismark Road	380' North of Bismark Road	Both	Loading Zone	7	24 Hr
Pine Street	60' North of 6th Street	82' North of 6th Street	West	Loading Zone	7	24 Hr
Sherman Avenue	11th Avenue	13th Street	West	Loading Zone	7	8:00am-4:00pm
Vine Street	Bismark Road	Meves Avenue	West	Loading Zone	7	24 Hr
Walnut Street	50' North of 4th Street	70' North of 4th Street	East	Loading Zone	7	24 Hr
Walnut Street	120' South of 3rd Street	110' South of 3rd Street	West	Loading Zone	Mon-Fri	8:00am-5:00pm

PARKING RESTRICTION RESOLUTION  
PART FOUR - TOW ZONES (2021/4/19)

Street	From	To	Side of Street	Parking Restriction Type	Parking Restriction Effective Days	Parking Restriction Effective Time
Swift Road	Stuhr Road	Museum Drive	Both	Tow Zone	7	24 Hr