



City of Grand Island

Tuesday, March 23, 2021

Council Session

Item G-17

#2021-68 - Approving Acquisition of Drainage Easement in Crane Valley Ninth Subdivision- North of Faidley Avenue, West of Diers Avenue (Parcel No. 400416182)

This item relates to the aforementioned Public Hearing item E-5.

Staff Contact: John Collins, P.E. - Public Works Director

RESOLUTION 2021-68

WHEREAS, a public drainage easement is required by the City of Grand Island, from KER Enterprises, LLC in Crane Valley Ninth Subdivision, City of Grand Island, Hall County, Nebraska and more particularly described as follows:

BEGINNING AT THE SOUTHEAST CORNER OF OUTLOT A, CRANE VALLEY NINTH SUBDIVISION; THENCE S89°15'02"W, ALONG THE SOUTH LINE OF SAID OUTLOT A, A DISTANCE OF 15.06 FEET; THENCE N46°17'40"W A DISTANCE OF 54.57 FEET; THENCE N28°30'21"W A DISTANCE OF 289.80 FEET; THENCE N40°59'17"W A DISTANCE OF 92.95 FEET; THENCE N23°17'06"W A DISTANCE OF 87.90 FEET TO A POINT ON THE EAST LINE OF LOT 1, CRANE VALLEY NINTH SUBDIVISION; THENCE N01°39'40"W, ALONG THE EAST LINE OF SAID LOT 1, A DISTANCE OF 92.91 FEET TO THE NORTH CORNER OF SAID OUTLOT A; THENCE S28°31'08"E, ALONG THE EAST LINE OF SAID OUTLOT A, A DISTANCE OF 609.95 FEET TO THE POINT OF BEGINNING. SAID DRAINAGE EASEMENT CONTAINS A CALCULATED AREA OF 19,243.45 SQUARE FEET OR 0.441 ACRES MORE OR LESS.

NOW, THEREFORE, BE IT RESOLVED BY THE MAYOR AND COUNCIL OF THE CITY OF GRAND ISLAND, NEBRASKA, that the City of Grand Island be, and hereby is, authorized to acquire such public easements from the property owner on the above described tracts of land.

- - -

Adopted by the City Council of the City of Grand Island, Nebraska, March 23, 2021.

Roger G. Steele, Mayor

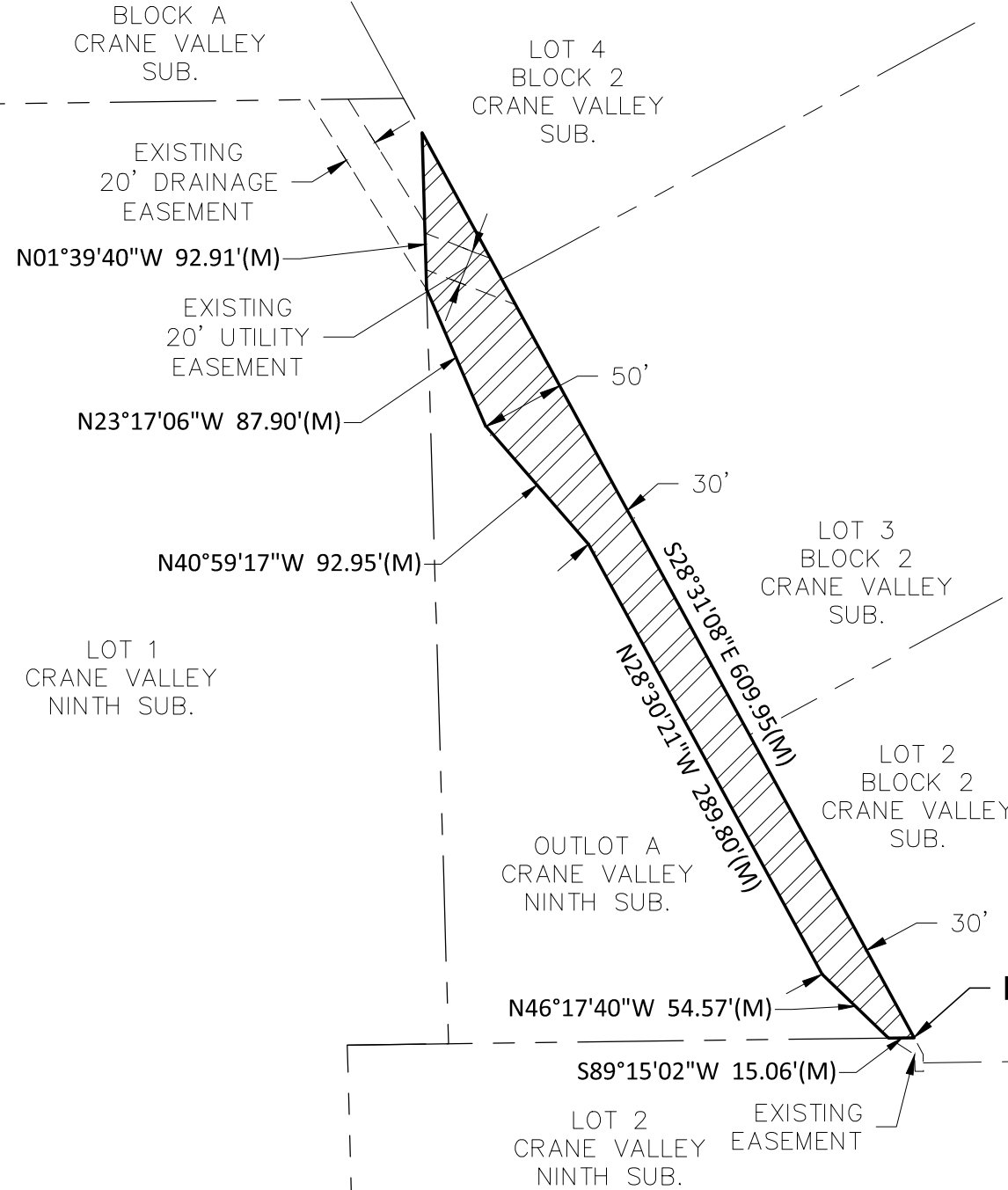
Attest:

RaNae Edwards, City Clerk

Approved as to Form	☐ _____
March 19, 2021	☐ City Attorney

DWG: F:\2019\3001-3500\019-3120-Design\Exhibits\EASEMENT EXHIBIT\019-3120 DRAIN EASE_0193120.dwg
DATE: Jan 26, 2021 4:28pm
USER: jjimenez
XREFS:

90' ROW
INST. NO
202005082

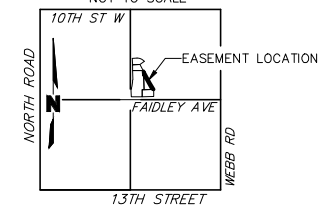


DRAINAGE EASEMENT DESCRIPTION:

A DRAINAGE EASEMENT LOCATED IN PART OF OUTLOT A, CRANE VALLEY NINTH SUBDIVISION IN THE CITY OF GRAND ISLAND, HALL COUNTY NEBRASKA, AND MORE PARTICULARLY DESCRIBED AS FOLLOWS;

BEGINNING AT THE SOUTHEAST CORNER OF OUTLOT A, CRANE VALLEY NINTH SUBDIVISION; THENCE S89°15'02\"W, ALONG THE SOUTH LINE OF SAID OUTLOT A, A DISTANCE OF 15.06 FEET; THENCE N46°17'40\"W A DISTANCE OF 54.57 FEET; THENCE N28°30'21\"W A DISTANCE OF 289.80 FEET; THENCE N40°59'17\"W A DISTANCE OF 92.95 FEET; THENCE N23°17'06\"W A DISTANCE OF 87.90 FEET TO A POINT ON THE EAST LINE OF LOT 1, CRANE VALLEY NINTH SUBDIVISION; THENCE N01°39'40\"W, ALONG THE EAST LINE OF SAID LOT 1, A DISTANCE OF 92.91 FEET TO THE NORTH CORNER OF SAID OUTLOT A; THENCE S28°31'08\"E, ALONG THE EAST LINE OF SAID OUTLOT A, A DISTANCE OF 609.95 FEET TO THE POINT OF BEGINNING. SAID DRAINAGE EASEMENT CONTAINS A CALCULATED AREA OF 19,243.45 SQUARE FEET OR 0.441 ACRES MORE OR LESS.

LOCATION MAP
SEC. 13-T11N-R10W
NOT TO SCALE



0' 50' 100'
SCALE IN FEET

LEGEND

- SECTION LINE
- ROW LINE
- EXISTING EASEMENT LINE
- PROPERTY LINE
- ▨ DRAINAGE EASEMENT AREA

PROJECT NO: 019-3120

DRAWN BY: SDL

DATE: 2021.01.26

DRAINAGE EASEMENT
Council Session - 3/23/2021

oisson

201 East 2nd Street
Grand Island, NE 68801
TEL 308.384.8750

EXHIBIT

2 Page 3 / 3