
Technical Advisory Committee

Monday, April 12, 2021

Regular Session

Item H3

Approval Recommendation of Final Draft FY 2022-2026 Transportation Improvement Program

Staff Contact: Andres Gomez, MPO Program Manager

TAC Agenda Report

Agenda Item No. H3

April 12, 2021

ISSUE

VOTE: Draft FY 2022-2026 Transportation Improvement Program

BACKGROUND

The Grand Island Area Metropolitan Planning Organization (GIAMPO) staff has prepared the FY 2022-2026 Transportation Improvement Program (TIP) for public review and comment. The TIP includes surface transportation projects to receive federal funds and surface transportation projects of regional significance, planned for the GIAMPO metropolitan planning area in Federal Fiscal Years 2022-2026.

The Draft FY 2022-2026 TIP has been developed by GIAMPO staff to be in compliance with regulations contained in the FAST Act, the most recent legislation governing the federal transportation program.

The public transportation element of the TIP includes projects for the City of Grand Island's Transit Program that collectively constitutes the Program of Projects (POP) for the City of Grand Island's Transit Program.

POLICY CONSIDERATIONS/DISCUSSION

GIAMPO's Public Participation Plan requires that the Draft FY 2022-2026 TIP be released for public review and comment prior to Policy Board adoption.

The Draft FY 2022-2026 TIP is financially constrained, and it is consistent with the Long Range Transportation Plan.

BUDGET CONSIDERATIONS

None.

COMMITTEE ACTION

None.

RECOMMENDATION

Approve Draft FY 2022-2026 TIP and release it for public review and comment.

STAFF CONTACT

Andres Gomez

Transportation Improvement Program

Fiscal Years 2022 – 2026

Grand Island Area Metropolitan Planning Organization



May 25, 2021



May 2021

The preparation of this document was financed in part with funding from the United States Department of Transportation (USDOT), administered by the Nebraska Department of Transportation (NDOT). The opinions, findings, and conclusions expressed in this publication are those of the authors and do not necessarily represent USDOT or NDOT.

Title VI Notice: Grand Island Area Metropolitan Planning Organization (GIAMPO) fully complies with Title VI of the Civil Rights Act of 1964 and related statutes and regulations in all programs and activities.

Americans with Disabilities Act (ADA) Information:

Individuals requiring reasonable accommodations may request written materials in alternate formats which include interpreter services, large print, readers, hearing assistance or other reasonable accommodations by contacting the City of Grand Island at 308-385-5455.

Additional copies of this document may be obtained by contacting:

City of Grand Island
Public Works Department
City Hall
100 East First Street
Grand Island, NE. 68802

Contents

Abbreviations and Acronyms	1
Introduction	2
Purpose of the TIP	3
Federal Requirements for Transportation Improvement Programs	3
Time Period	3
Public Comments	3
Specific Project Information.....	3
Consistency with the Long Range Transportation Plan	3
Financial Constraint.....	4
Process for Including Projects in the TIP	4
Status of Projects from the previous TIP	4
Transportation Control Measures and Air Quality	4
The Metropolitan Planning Organization Structure	4
Current Membership of the Policy Board	5
Current Membership of the Technical Advisory Committee	5
Geographic Area the TIP Covers.....	5
Transportation Improvement Program (TIP)	6
Statewide Transportation Improvement Program (STIP).....	6
Conformance with Long Range Transportation Plan	6
Types of Projects included in the TIP	7
Project Selection	7
Maintenance and Operation of Current Transportation Systems.....	8
Public Transportation Project Prioritization Process	8
Financial Plan Statement.....	8
Public Involvement Process.....	8
Annual Listing of Projects	9
Congestion Mitigation and Air Quality (CMAQ).....	9
National Performance Management Measures	9
Safety	10
Infrastructure	10
System Performance.....	11
Transit Asset Management	11

Revising an Approved TIP/STIP	12
Amendments	12
Administrative Modifications.....	13
Financial Constraint Summary.....	14

Appendix Contents

A
State Highway Projects

B
Local Roadway Projects

C
Transit Projects

D
MPO Self – Certification

E
Comments

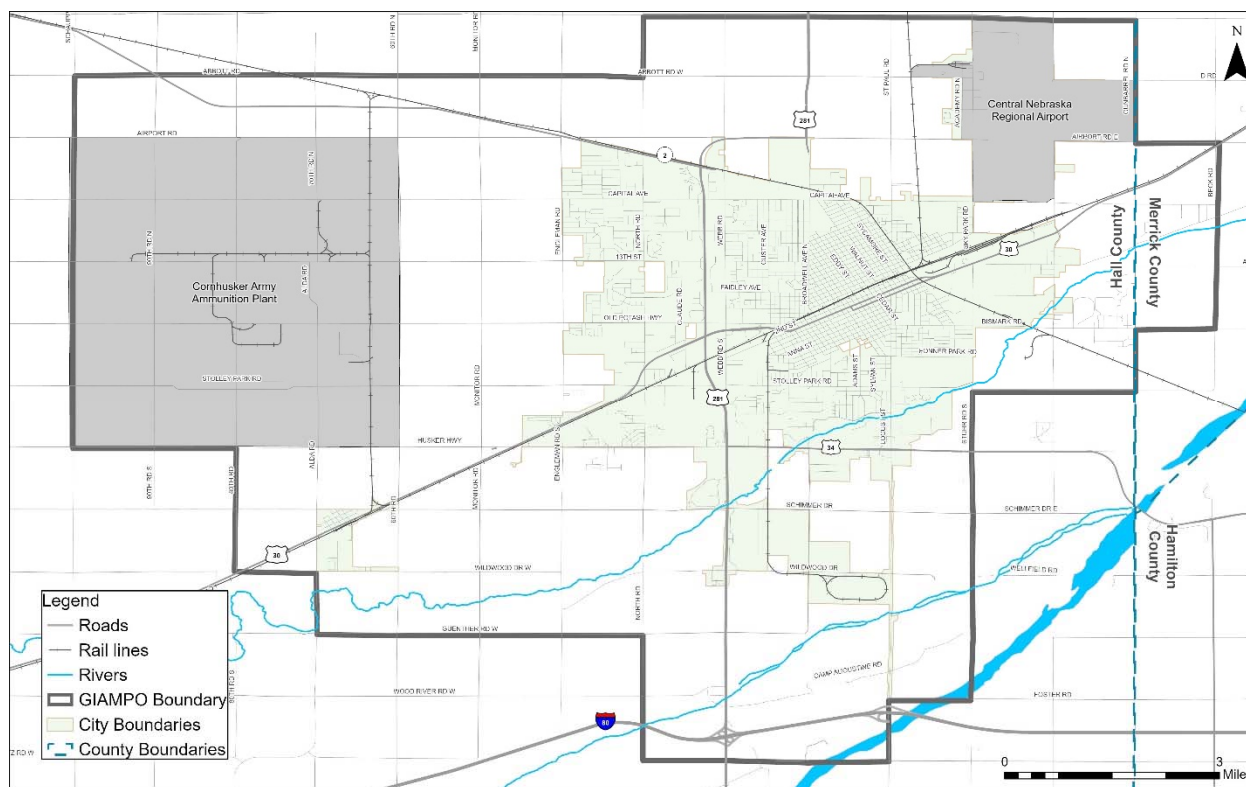
Abbreviations and Acronyms

AC	Advanced Construction
CMAQ	Congestion Mitigation and Air Quality Program
DOT	Department of Transportation
EA	Earmark
GIAMPO	Grand Island Area Metropolitan Planning Organization
HSIP	Highway Safety Improvement Program
FAST Act	Fixing America's Surface Transportation Act
FHWA	Federal Highway Administration
FTA	Federal Transit Administration
MAP-21	Moving Ahead for Progress in the 21st Century Act
MPO	Metropolitan Planning Organization
NDOT	Nebraska Department of Transportation
NHPP	National Highway Performance Program
STIP	Statewide Transportation Improvement Program
TAM	Transit Asset Management
TIP	Transportation Improvement Program
TPM	Transportation Performance Management
USDOT	United States Department of Transportation
YOE	Year of Expenditure
3-C	Continuing, Cooperative, and Comprehensive

Introduction

The Transportation Improvement Program (TIP) for the Grand Island Area Metropolitan Planning Organization (GIAMPO) Metropolitan Planning Area is a staged, five-year schedule of transportation improvements using (or expected to use) Federal Highway Administration (FHWA) or Federal Transit Administration (FTA) funding, state funds, and other projects that have significant system impacts. The TIP is developed cooperatively by the GIAMPO Technical Advisory Committee and agencies within the GIAMPO Metropolitan Planning Area including City of Grand Island Public Works Department, Hall County Public Works Department, Merrick County Highway Department, Village of Alda, Nebraska Department of Transportation (NDOT), and others agencies as transportation related projects are developed. The GIAMPO Metropolitan Planning Area (MPA) is illustrated in **Figure 1**.

Figure 1 – GIAMPO Metropolitan Planning Area



Federal regulations require that each urbanized area, as a condition to receive federal capital or operating assistance, have a continuing, cooperative, and comprehensive (3-C) transportation planning process. The Metropolitan Planning Organization (MPO) is the organization designated to carry out the 3-C process which results in plans and programs that are consistent with the comprehensively planned development of the urbanized area. The TIP, along with the Long Range Transportation Plan, is a key element of this process. The Moving Ahead for Progress in the 21st Century Act (MAP-21) became law in 2012 which authorizes surface transportation programs and continues the basic planning requirements. The Fixing America's Surface Transportation Act (FAST Act), became law in 2015 and continues the Metropolitan Planning programs. These programs continue the requirement for a cooperative, continuous, and comprehensive framework for making transportation investment decisions in metropolitan areas and the joint oversight by the Federal Highway Administration (FHWA) and the Federal Transit Administration (FTA). In order to remain eligible for federal transportation funding, the planning process must demonstrate

that the GIAMPO Metropolitan Planning Area is in compliance with all federal requirements for metropolitan transportation planning.

Purpose of the TIP

The primary purpose of this document is to provide information to FHWA, FTA, NDOT, transportation agencies, and citizens regarding the TIP development process which:

- Depicts the GIAMPO priorities for the expenditure of federal funds for all transportation funding categories by federal fiscal year including highway and public transportation projects;
- Provides assurance to the FHWA that the project selection process has been carried out in accordance with federal requirements, Section 134 of Title 23, U.S. Code, as amended; and
- Demonstrates that the TIP is financially feasible.

Federal Requirements for Transportation Improvement Programs

The planning and programming regulations include specific requirements for development and content of TIPs which are summarized below and addressed within this document.

Time Period

The TIP is to cover at least a four-year period and be updated at least every four years. The financial and project tables included in this document cover FY 2022–2026. NDOT and the MPOs have established an annual update cycle for the TIP. GIAMPO on an annual basis must submit an approved TIP to NDOT prior to June 15.

Public Comments

The TIP process is to provide opportunity for public review and comment on the TIP. GIAMPO's transportation planning process allows for public involvement at various points within the transportation plan and program development. GIAMPO's Public Participation Plan was adopted on November 24, 2015.

Specific Project Information

The TIP is to list capital and non-capital surface transportation projects to use a variety of federal funds or regionally significant projects requiring FHWA or FTA action. For each project or project phase the TIP shall include sufficient descriptive material including description, location, length, total cost, amount of federal funds, and responsible agency. Line items may be used for projects that are not considered to be of appropriate scale for individual identification. A complete detailed project listing is organized by project type for each project.

Consistency with the Long Range Transportation Plan

Each project or project phase in the TIP is to be consistent with the Long Range Transportation Plan, its goals, and performance measures. For each project included in the detailed project listing, GIAMPO staff cross-checks with the Long Range Transportation Plan to ensure consistency.

Financial Constraint

The TIP is to include a financial plan including system level estimates of costs and revenue sources that are reasonably expected to be available to adequately operate and maintain federal-aid highways and public transportation. The financial plan is shown on page 14, which summarizes the TIP financial resources.

Process for Including Projects in the TIP

The TIP should specify the process to identify projects for inclusion in the TIP in coordination with the Long Range Transportation Plan. GIAMPO's process annually coordinates with NDOT and local agencies to program projects in the TIP.

Status of Projects from the previous TIP

The TIP should list major projects from the previous TIP that were implemented or delayed. Each section lists projects under construction, completed, delayed, or moved out of the current programming period.

Transportation Control Measures and Air Quality

The Grand Island Area Metropolitan Planning Area is in conformance for air quality and the state does not require a State Implementation Plan for meeting Clean Air Act requirements.

The Metropolitan Planning Organization Structure

The governor designates the MPOs for urban areas in the state to be responsible for carrying out the urban transportation planning process through the development of a Long Range Transportation Plan and TIP. GIAMPO is the designated MPO for the Metropolitan Planning Area which includes the City of Grand Island, Village of Alda, and portions of Hall and Merrick Counties. The MPO is composed of elected and appointed officials representing local, state, and federal governments and agencies having interest or responsibility in land use planning, the quality and the location of transportation facilities, transportation safety issues on all roads, and better planning and designs.

The Mayor of the City of Grand Island Area is the "Chair" of the GIAMPO Policy Board. Under the Mayor, the MPO functions through a committee structure consisting of the GIAMPO Policy Board, GIAMPO Technical Advisory Committee, subcommittees which may be created to assist the Technical Advisory Committee on various local transportation issues, and MPO administrative staff to establish and approve the Long Range Transportation Plan, TIP, and other work of the MPO. The GIAMPO Policy Board is composed of elected and appointed officials representing local, state, and federal governments or agencies having interest or responsibility in the comprehensive transportation planning process. Below is the current membership of the GIAMPO Policy Board and Technical Advisory Committee.

Current Membership of the Policy Board

Roger G. Steele, Mayor	City of Grand Island
Mitch Nickerson, Councilman	City of Grand Island
Jason Conley, Councilman	City of Grand Island
Mike Paulick, Councilman	City of Grand Island
Ron Peterson, District 7 Supervisor	Hall County Board of Supervisors
Gary Quandt, District 6 Supervisor	Hall County Board of Supervisors
Pat O'Neill, Chairman	Hall County Planning Commission
John Selmer, Director	Nebraska Department of Transportation
Joseph Werning, Division Administrator	FHWA Nebraska Division (Ex-Facto)
Mokhtee Ahmad, Regional Administrator	FTA Region VII (Ex-Facto)

Current Membership of the Technical Advisory Committee

Voting

Jerom Janulewicz, City Administrator	City of Grand Island
Chad Nabity, Director	Hall County Regional Planning Dept.
John Collins, Public Works Director	City of Grand Island
Keith Kurz, Director of Engineering Services	City of Grand Island
Charley Falmlen, Transit Program Manager	City of Grand Island
Craig Wacker, Highway Planning Manager	Nebraska Department of Transportation
Wes Wahlgren, District 4 Engineer	Nebraska Department of Transportation
Steve Riehle, Public Works Director	Hall County
Mike Meyer, Highway Superintendent	Merrick County
Romana Schafer, Clerk/Treasurer	Village of Alda
Mike Olson, Executive Director	Central Nebraska Regional Airport

Non-Voting

Justin Luther, Trans. Planner, Realty, Civil Rights	Federal Highway Administration
Logan Daniels, Transportation Program Specialist	Federal Transit Administration - VII
Daniel Nguyen, Community Planner	Federal Transit Administration - VII
Jodi Gibson, Local Projects Engineer	Nebraska Department of Transportation
VACANT, Assistant Planning Engineer	Nebraska Department of Transportation
Sara Thompson Cassidy	Union Pacific Railroad
Bentley Tomlin	Burlington Northern Santa Fe Railroad
Cindy Johnson	Grand Island Chamber of Commerce
Mary Berlie	Grand Island Area Economic
	Development Corporation
Patrick Brown, Finance Director	City of Grand Island
Shannon Callahan, Street Superintendent	City of Grand Island

Geographic Area the TIP Covers

The Metropolitan Planning Area is the geographic area in which the metropolitan transportation planning process must be carried out. The boundaries of the Metropolitan Planning Area are determined by agreement between the Governor and the MPO. The GIAMPO Metropolitan Planning Area encompasses the City of Grand Island, Village of Alda, and portions of Hall and Merrick Counties.

Transportation Improvement Program (TIP)

The TIP is a programming document that identifies the timing and funding of all highway, bridge, transit, bicycle, and pedestrian transportation projects scheduled for implementation in the MPO planning area over a four -year period using federal transportation funds and is annually coordinated with the State-TIP process. According to federal regulations governing transportation planning, the TIP is to be a staged multi-year program of transportation improvement projects that "shall cover a period of not less than four years and be consistent with the urban area transportation plan."

The TIP is directly related to the City's, County's, and State's Capital Improvement Programs which are brought forward at this time each year. The TIP identifies funding amounts by source of funding, jurisdictional responsibility, type of project, and year of funding for these projects. This program is a listing of priority projects which are to be carried out within the next five fiscal years which include FY 2021-2022, 2022-2023, 2023-2024, 2024-2025 and 2025-2026. Projects planned for implementation beyond this time frame are not listed in this program since local funding may be tentative and federal funds for these projects cannot be obligated.

The TIP reflects the priorities and direction of the region and its state and federal partners in the transportation planning process. Projects identified in the TIP must be consistent with the projects or goals and objectives identified in the current Long Range Transportation Plan for the Grand Island metropolitan region. The TIP is part of the MPO's effort to establish and maintain the planning process required by the federal government as a condition for receipt of federal transportation funding. This program of projects depicts the MPO's priorities for the expenditure of federal funds for all transportation funding categories by federal fiscal year including highway and public transportation projects. The TIP document may also include, for informational purposes, non-federally funded projects occurring in the planning area. The federal government regulations require the TIP to be updated and adopted by the local MPO at least every four years.

Statewide Transportation Improvement Program (STIP)

The TIP becomes part of the State Transportation Improvement Program (STIP) by reference and the frequency and cycle for updating the TIP is compatible with STIP development and approval process. NDOT and the Nebraska MPOs have established an annual update cycle.

The STIP begins as a compilation of the regional TIPs that have been adopted by the MPOs and develops into a comprehensive list of all highway (state or local) and all transit (capital or operating) projects in urban and rural areas that propose to use federal funds. All federally funded projects proposed to begin between October 1st and September 30th from all of the regional TIPs across the state are included in this STIP including federally funded projects in rural areas. The STIP is updated every year and is to include a minimum four year listing of federal-aid projects for approval by FHWA and FTA.

Conformance with Long Range Transportation Plan

All projects were drawn from, or are consistent with, the GIAMPO 2045 Long Range Transportation Plan, Regional Transit Needs Assessment and Feasibility Study, State Transportation Plans and Needs Studies, and the recommendations of local governments and citizens for the TIP. The projects reflect community goals and objectives and are assigned to the appropriate staging period based on the area's priorities, the individual project urgency, and the anticipated funding capabilities of the participating governments.

The TIP document was developed in conformance with the Long Range Transportation Plan for GIAMPO. A review was undertaken to ensure transportation projects programmed in the TIP were found to be consistent with the Long Range Transportation Plan.

The Long Range Transportation Plan was adopted by GIAMPO on February 23, 2021. The development of the Long Range Transportation Plan included a needs assessment and financial analysis and discussed the social, economic, and environmental impacts to consider when developing new transportation projects, and where environmentally sensitive areas are located in relation to projects identified in the horizon years or 2026 and 2045. The Long Range Transportation Plan was transmitted to NDOT and to FHWA and FTA.

Types of Projects included in the TIP

Federal regulations require that any transportation project within the Metropolitan Planning Area that is to be funded with U.S. Department of Transportation funds must be included in the TIP. The types of projects listed below are eligible for federal funding:

- a. Projects on the federal-aid system (road and bridge construction, reconstruction, resurfacing, restoration, rehabilitation, etc.).
- b. Public transportation (vehicle maintenance and operations, capital improvement projects, public transit system construction, etc.).
- c. Projects that are not on the federal-aid system, but may be eligible for federal funding for other reasons (e.g., bridge projects, bicycle and pedestrian facilities, etc.). The projects, however, must be linked to the transportation network.
- d. Regional projects requiring FHWA or FTA action or projects having significant regional impacts.

Project Selection

GIAMPO's process for including projects in the TIP is the means by which projects move from the current Long Range Transportation Plan (LRTP) into the TIP for implementation. This process entails annual coordination with NDOT and local agencies to identify projects for programming in the TIP. Projects listed in the TIP typically originate in the LRTP developed by the MPO in cooperation with the respective implementing agencies involved in the planning process. Implementing agencies carry out the LRTP's specific elements through the TIP process. As a result, the TIP serves as a strategic management tool to accomplish the objectives of the Long Range Transportation Plan.

Project prioritization is an important element of the TIP, especially since the demand for federal-aid transportation projects usually exceeds the level of federal funds available for use. State highway projects in the TIP have been prioritized by NDOT. Local federal-aid improvement projects programmed by the City of Grand Island, Hall County, Merrick County Village of Alda, and coordinating agencies have been dependent on the availability of competitive funding using the federal Highway Safety Improvement Program, Set Aside from Surface Transportation Block Grant Program (Transportation Alternatives), and FTA funds. Other selected projects are accomplished through a coordinated effort among all parties to advance projects which preserve the existing system, increase safety and efficiency of the transportation system, improve vehicle mobility and connectivity, protect and enhance the environment, and support quality of life. Readiness to proceed and financial capacity is also considered in project selection.

Maintenance and Operation of Current Transportation Systems

The highest priority in the selection of projects for the TIP is to ensure the adequate reconstruction, maintenance, and operation of the current transportation system. NDOT is programming three (3) projects for highway resurfacing, two (2) project for repairs/overlays, one (1) project for wetlands mitigation and one (1) project to construct a 4-lane divided roadway on a new alignment for a section of US-30. The City of Grand Island is programming one (1) project programmed for safety and operational improvements at the Broadwell Avenue, State Street, and Eddy Street intersection and one (1) project to widen a section of Old Potash Highway, four (4) projects to widen sections of North Road, one (1) project to widen a section of Capital Avenue and a (1) Planning and Environmental on Broadwell Avenue/ UPRR.

Public Transportation Project Prioritization Process

Public transportation projects are funded with a mix of local, state, and federal funds. The public transportation element of the TIP includes projects for the City of Grand Island's Transit Program that collectively constitutes the Program of Projects (POP) for the City of Grand Island's Transit Program. Approval of the TIP includes the approval of the POP for the City of Grand Island's Transit Program. The public involvement procedures used for TIP development and amendments are used to satisfy the POP requirements for FTA Section 5307 (urban) funding.

In 2012, the City of Grand Island became the designated recipient to receive FTA Section 5307 funds. In 2013, the City of Grand Island and Hall County entered into an interlocal agreement for Hall County to continue to provide public transit services using unexpended FTA Section 5311(rural) funds during a transitional period. In April 2016, the City of Grand Island approved an interlocal agreement where the City of Grand Island would provide public transit services within the City of Grand Island and Hall County through a contract with a public transportation services provider up to a three year period. This interlocal agreement was renewed in April 2019 for a term of one year with an automatic renewal thereafter for successive terms of one year each unless either the City of Grand Island or Hall County provides written notice not less than 90 days prior to the termination of the then current term.

In December 2017, GIAMPO completed a Regional Transit Needs and Feasibility Study, and it recommended a preferred alternative for a five year planning horizon within the Grand Island urbanized area. This plan will be used by the City of Grand Island Transit Program to plan and program transit projects in the TIP.

Financial Plan Statement

The projects identified in the TIP are financially constrained, meaning they can be implemented using current and proposed revenue sources based on the programs contained in the TIP. The expected and anticipated revenue sources are, therefore, reasonably expected to be in place when needed. Revenues for federally funded projects during each year are shown in the Financial Plan on page 14.

Public Involvement Process

The transportation planning process allows for public involvement at various points within the transportation plan and program development. This involves a series of steps from the adoption of the MPO Long Range Transportation Plan that is coordinated with the programming of projects and again for the

actual construction of the transportation facilities. The critical decision points in the transportation planning process are: 1) the development of at least a 20 year transportation plan, 2) the street improvement program which identifies priorities for planned projects, 3) the development of capital improvement programs for a period of four to six years, 4) project design and project construction. The first two steps are included in the long range planning process, the third step consolidates the capital improvement programs of the City of Grand Island, Hall County, Merrick County, Village of Alda, and NDOT with the MPO TIP and the last step is the specific project design and development.

The City of Grand Island, Hall County, Merrick County, and Village of Alda each have an established procedure for adopting improvement programs. Their processes include review by the County Planning Commission for compliance with the Comprehensive Plan and formal advertised public hearings before the Planning Commission and City Council or County Board. The consolidation of these improvement programs is coordinated in the TIP as reviewed by the GIAMPO Technical Advisory Committee before it is released for the public review and comment period. The public comments are summarized, including how the comments were addressed, and incorporated in the TIP. The GIAMPO Policy Board reviews, approves, and submits the TIP to NDOT for inclusion in the STIP.

Annual Listing of Projects

Pursuant to the provisions of 23 U.S.C. 134(j)(7)(B) and 49 U.S.C. 5303(c)(5)(B), the MPO has published an annual listing of projects for which federal funds have been obligated in the preceding year. These are listed in the TIP by jurisdiction within each section. The published document is available for public review from the MPO and on the MPO website under the TIP Section.

Congestion Mitigation and Air Quality (CMAQ)

Federal legislation provides funds to be utilized in the Clean Air Act for non-attainment and maintenance areas for transportation programs and projects that contribute to attainment of National Ambient Air Quality Standards. Since the GIAMPO Metropolitan Planning Area is in compliance with the latest air quality standards, the MPO does not specifically program for CMAQ funding.

National Performance Management Measures

With the passing of MAP-21 transportation bill, and continuing in the FAST Act, State departments of transportations (State DOT) and MPOs are required to use a performance based planning and programming approach as part of the Transportation Performance Management (TPM) program. TPM is defined as a strategic approach that uses system information to make investment and policy decisions to achieve national performance goals.

As part of TPM, FHWA and FTA issued Final Rules that include National Performance Management Measures at the system level that the State DOTs and MPOs are required to incorporate into their planning processes. The applicable National Performance Management Measures to MPOs include the following:

- **Safety (PM-1).** Highway Safety Improvement Program/Safety Performance Management Measures [23 CFR § 924, 23 CFR § 490]
- **Infrastructure (PM-2).** Assessing Pavement Condition for the National Highway Performance Program and Bridge Condition for the National Highway Performance Program [23 CFR § 490]

- **System Performance (PM-3).** Assessing Performance of the National Highway System, Freight Movement on the Interstate System, and Congestion Mitigation and Air Quality Improvement Program [23 CFR § 490]
- **Transit Asset Management (TAM)** is established to evaluate the state of good repair of transit provider capital assets for safety and operations [49 CFR § 625, 630].

Each of the above National Performance Management Measures consists of a series of performance measures and corresponding target setting requirements. When State DOTs and/or transit providers have set targets, MPOs must establish performance targets at the regional level within 180 days. MPOs have the option to set its own regional targets, or to support the targets established by State DOTs and/or transit providers.

Safety

FHWA published the Highway Safety Improvement Program and Safety Performance Management Measures (PM-1) Final Rules in the Federal Register on March 15, 2016. The Safety Performance Management Measures rule supports the Highway Safety Improvement Program (HSIP), as it establishes five safety performance measures to carry out the HSIP and to assess serious injuries and fatalities on all public roads. State DOTs are required to establish safety (HSIP) targets for all five performance measures by August 31 of each year.

GIAMPO has agreed to support the state's annual (CY 2021) safety performance targets set in August 2020. The targets are:

Performance Measure	Target
Number of Fatalities	241
Rate of Fatalities per 100 million vehicle miles traveled (VMT)	1.130
Number of Serious Injuries	1,408
Rate of Serious Injuries per 100 million VMT	6.507
Number of Non-motorized Fatalities and Non-motorized Serious Injuries	126.6

GIAMPO supports these targets by reviewing and programming HSIP projects within the Metropolitan Planning Area. Working in partnership with local agencies, NDOT safety investments were identified and programmed which will construct effective countermeasures to reduce traffic fatalities and serious injuries. NDOT projects chosen for HSIP investment are based on crash history, roadway characteristics, and the existence of infrastructure countermeasures that can address the types of crashes present.

Infrastructure

Assessing Pavement Condition for the National Highway Performance Program and Bridge Condition for the National Highway Performance Program (PM-2) was identified in the FHWA Final Ruling published in the Federal Register on January 18, 2017 (82 FR 5886). This rule establishes six performance measures to assess the condition of pavement and bridges on the National Highway System (NHS) to carry out the National Highway Performance Program. State DOTs are required to establish pavement and bridge condition targets by May 20 every four years.

GIAMPO has agreed to support the state's 4-year performance period (CY 2018-2021) pavement and bridge performance targets set in May 2018. The targets are:

Performance Measure	Target
% of Interstate pavements in Good condition	At least 50%
% of Interstate pavements in Poor condition	No more than 5%
% of non-Interstate NHS pavements in Good condition	At least 40%
% of non-Interstate NHS pavements in Poor Condition	No more than 10%
% of NHS bridges by deck area classified as in Good condition	At least 55%
% of NHS bridges by deck area classified as in Poor condition	No more than 10%

GIAMPO will review and program pavement and bridge projects within the Metropolitan Planning Area to contribute toward the accomplishment of these targets.

System Performance

Assessing Performance of the National Highway System, Freight Movement on the Interstate System, and Congestion Mitigation and Air Quality Improvement Program (PM-3) was identified in the FHWA Final Ruling, published in the Federal Register on January 18, 2017 (82 FR 5970). This rule establishes performance measures to assess the performance of the Interstate and non-Interstate NHS to carry out the National Highway Performance Program, freight movement on the Interstate system to carry out the National Highway Freight Program, and traffic congestion and on-road mobile source emissions for the purpose of carrying out the Congestion Mitigation and Air Quality Improvement (CMAQ) Program. There are two performance measures to assess system performance of the NHS, one performance measure to assess freight movement on the Interstate system, two performance measures to assess traffic congestion under the CMAQ program, and one performance measure to assess total emissions reductions by applicable pollutants under the CMAQ program. State DOTs are required to establish system performance, freight, and CMAQ targets by May 20 every four years.

GIAMPO has agreed to support the state's 4-year performance period (CY 2018-2021) system performance and freight performance targets set in May 2018 (Nebraska exempt from CMAQ measures this performance period). The targets are:

Performance Measure	Target
% of Person-Miles Traveled on the Interstate that are Reliable	94.0%
% of Person-Miles Traveled on the non-Interstate NHS that are Reliable	88.0%
Freight Reliability	1.25

GIAMPO will review and program system performance and freight projects within the Metropolitan Planning Area to contribute toward the accomplishment of these targets.

Transit Asset Management

FTA issued a Final Rule on transit asset management (TAM) plans to evaluate the state of good repair of transit provider capital assets for safety and operations. Recipients of public transit funds—which include states, local authorities, and public transportation operators—are required to establish targets for state of good repair performance measures; to develop transit asset management and transit safety plans; and to

report on their progress toward achieving targets. Public transportation operators are directed to share information with MPOs and states so that all plans and performance reports are coordinated.

The Rule, “Transit Asset Management; National Transit Database,” went into effect on July 26, 2016 with the TAM plan due for transit by October 1, 2018. Transit target setting repeats annually and plans are updated every four years. The City of Grand Island (transit provider) participates in a group TAM plan, which is sponsored by NDOT. GIAMPO has agreed to establish state of good repair performance targets, which are the same targets established by NDOT and the City of Grand Island. NDOT set its targets on January 1, 2017, and the City of Grand Island set its targets on May 23, 2017. The targets are:

Category	Class	Default *ULB	Performance Target
Rolling Stock	Cutaway bus	10 years	50% of fleet exceeds default ULB
	Minivan	8 years	50% of fleet exceeds default ULB
	Van	8 years	50% of fleet exceeds default ULB
Equipment	Automobile	8 years	75% of fleet exceeds default ULB
Facilities	Admin/Storage	40 years	70% of facilities rated under 3.0 on TERM scale

GIAMPO supports these targets by reviewing and programing transit projects relating to capital assets within the Metropolitan Planning Area.

Revising an Approved TIP/STIP

Revisions are changes to a TIP/STIP that occur between their annual publications. There are two types of changes that occur under the umbrella of revision. The first is a major revision or “Amendment”. The second is a minor revision or “Administrative Modification”.

Amendments

An amendment is a revision to a TIP/STIP that involves a major change to a project included in the TIP/STIP. Amendments requires public review and comment and demonstration of fiscal constraint.

There are four main components that can be used to determine whether a project change rises to the level of an amendment:

- **Project costs:** Amendments are required whenever the federal-aid amount changes by 20% or \$2 million, whichever is greater. For computing the % change, standard rounding procedures will be used; 19.50% and greater is considered to be 20% and therefore would require an amendment.
- **Additions/Deletions:** Projects or phases of projects which are added or deleted from the first four years of the TIP/STIP will be processed as amendments (excluding grouped projects).
- **Funding sources:** Adding federal funding sources or changing from one federal funding category to another (including converting advanced construction) will require an amendment.
- **Scope and termini changes:** Substantial changes to project scope shown in the approved STIP or project termini changes greater than 0.25 mile will require an amendment.

Administrative Modifications

A minor revision to a TIP or STIP is an administrative modification. It includes minor changes to projects, including projects using advanced construction (AC) procedures, already included in the TIP. Administrative modifications may be made at any time and do not require public review or Policy Board action. However, GIAMPO must demonstrate financial constraint. This includes changes such as clarifying project descriptions, reducing project costs, minor adjustments to project budgets or clerical mistakes.

The following components should be used to determine if a change can be processed as an administrative modification:

- **Project costs:** Projects in which the federal-aid and/or AC amount has been changed by less than 20% or \$2 million, whichever is greater, can be processed with an administrative modification. For purposes of this calculation federal-aid and AC amounts will be combined.
- **Additions/Deletions:** Projects or phases of projects added to group listings explained earlier will be processed as administrative modifications.
- **Schedule changes:** Changes in schedules to projects which are included in the first four years of the TIP/STIP will be considered administrative modifications
- **Funding sources:** Redistribution of federal funding or AC among funding sources already listed with the project can be done with an administrative modification.
- **Scope and termini changes:** Minor changes to project scope and termini changes of less than 0.25 mi. can be made with an administrative modification. Project termini not consistent with the Long Range Transportation will require an amendment.

Financial Constraint Summary

Grand Island Area Metropolitan Planning Organization (GIAMPO)
Transportation Improvement Program
Fiscal Years 2022-2026
Financial Constraint Projects
(\$1,000's)

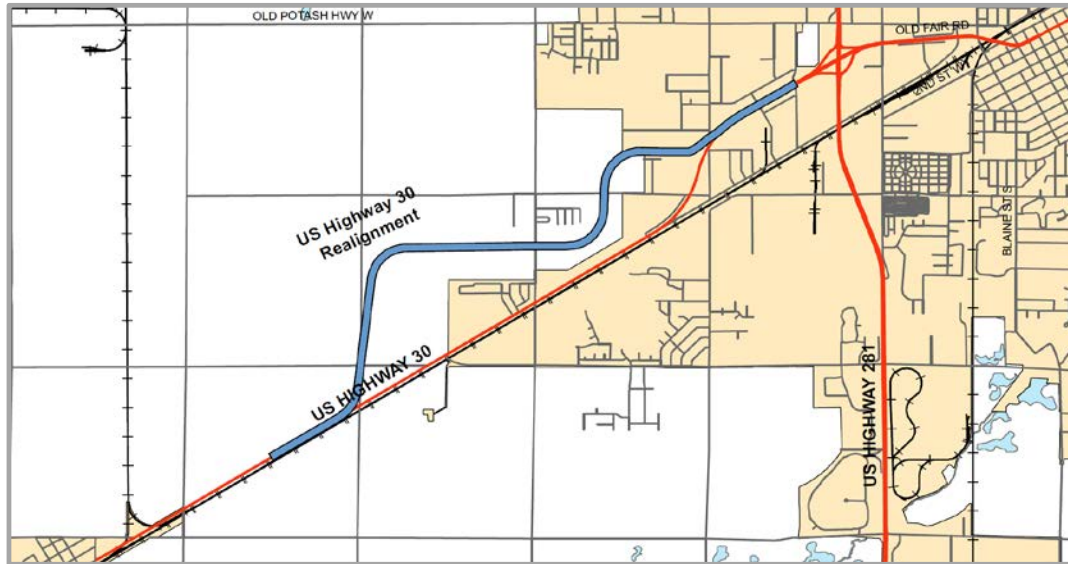
Federal Highway Administration	2022	2023	2024	2025	2026	Total
National Highway Performance Program (NHPP)	\$15,444	\$5,607	\$0	\$0	\$0	\$21,051
Highway Safety Improvement Program (HSIP)	\$0	\$0	\$0	\$0	\$0	\$0
Surface Transportation Program (STP)	\$0	\$2,134	\$0	\$0	\$0	\$2,134
Nebraska Department of Transportation	\$5,728	\$5,824	\$29,043	\$0	\$0	\$40,595
City of Grand Island	\$13,034	\$5,808	\$6,051	\$0	\$0	\$24,893
	\$34,206	\$19,373	\$35,094	\$0	\$0	\$88,673

Federal Transit Administration	2022	2023	2024	2025	2026	Total
Section 5307 and 5305	\$4,248	\$620	\$553	\$569	\$0	\$5,990
Section 5311	\$32	\$42	\$36	\$37	\$0	\$146
Section 5339	\$590	\$64	\$68	\$72	\$0	\$794
Nebraska Department of Transportation	\$14	\$15	\$15	\$15	\$0	\$60
City of Grand Island	\$813	\$405	\$396	\$409	\$0	\$2,023
Hall County	\$14	\$15	\$15	\$15	\$0	\$60
	\$5,711	\$1,162	\$1,083	\$1,117	\$0	\$9,073

NOTE: The financial table above illustrates the identified funding for the projects included in the tables for FY 2022-2026.

A State Highway Projects

TIP #: 2016-004 **State ID:** 41704 **Project #:** S-30-4(1046) **Project Name** US-281 West, Grand Island



Description: 4 lane divided roadway on new alignment

HWY: US-30

Location: US-30 from 1.4 mi west of Grand Island to 0.4 mi west of US-281. Begin RP - 308.84

Length (SLM): 3.7

Project Sponsor: NDOT

District #: 4

A/Q Status: Exempt

YOE	Phase	Fund Type	Fund Description	Estimate (\$1,000)
2022	PE	Local	Grand Island	\$193
2022	PE	State	NDOT	\$2,158
2023	ROW	Local	Grand Island	\$508
2023	ROW	State	NDOT	\$3,863
2024	CONST/ CE	Local	Grand Island	\$3,351
2024	CONST/ CE	State	NDOT	\$29,043
Total Project Estimate				\$39,116

Notes:

TIP #: 2016-008 **State ID:** 42776 **Project #:** NH-30-4(162) **Project Name** In Grand Island Bridges



Description: 3-bridge repair/overlays, sealing, approach slabs, mill, resurface roadway

HWY: US-30

Location: Three US-30 Bridges in Grand Island (Jct US-30/US-281/N-2 bridge and from Old Lincoln Hwy to Grant St), RP - 313.66

Length (SLM): 0.4

Project Sponsor: NDOT

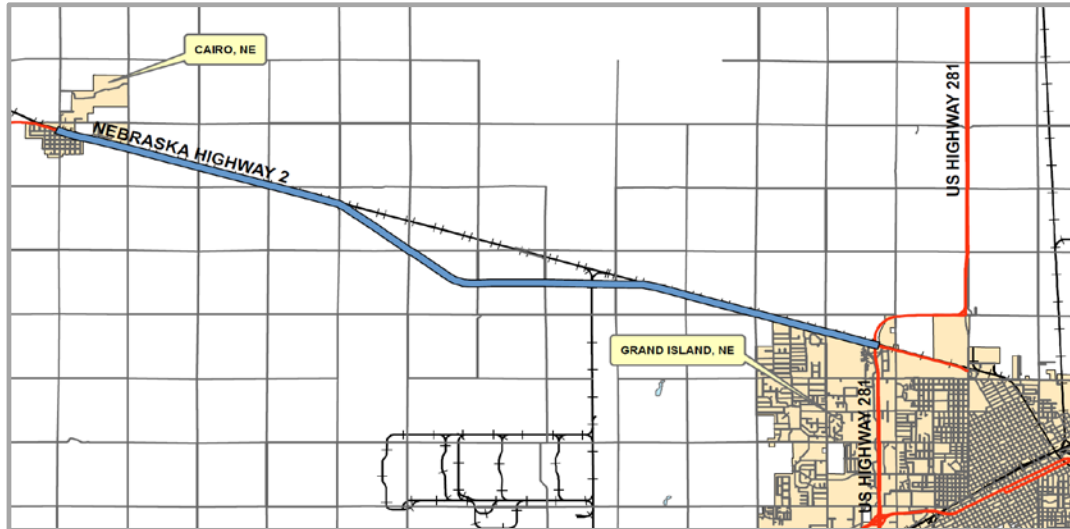
District #: 4

A/Q Status: Exempt

YOE	Phase	Fund Type	Fund Description	Estimate (\$1,000)
2019	PE	State	NDOT	\$290
2020	ROW	State	NDOT	\$27
2022	CONST/ CE	Local	Grand Island	\$189
2022	CONST/ CE	Federal	NHPP	\$4,108
2022	CONST/ CE	State	NDOT	\$1,003
Total Project Estimate				\$5,617

Notes: PE in YOE 2019 and ROW in YOE 2020 is not reflected in Financial Constraint Table. This project is in progress.

TIP #: 2018-001 **State ID:** 42787 **Project #:** NH-2-4(112) **Project Name** Cairo - Grand Island



Description: Resurfacing

HWY: N-2

Location: N-2 from Cairo southeast to US-281 in Grand Island, RP - 343.73

Length (SLM): 12.5

Project Sponsor: NDOT

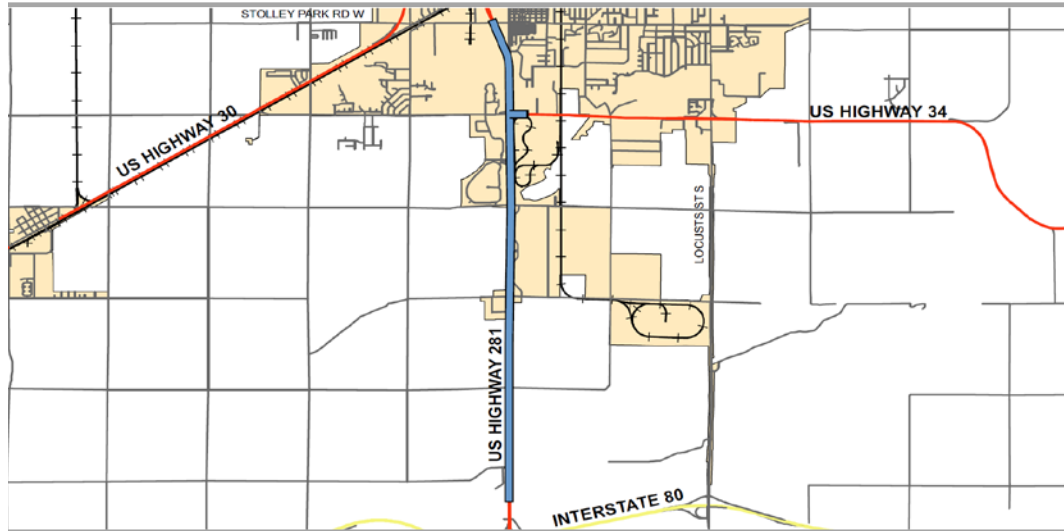
District #: 4

A/Q Status: Exempt

YOE	Phase	Fund Type	Fund Description	Estimate (\$1,000)
2019	PE	State	NDOT	\$585
2020	ROW	State	NDOT	\$0
2022	CONST/ CE	Local	Grand Island	\$2,080
2022	CONST/ CE	Federal	NHPP	\$11,336
2022	CONST/ CE	State	NDOT	\$1,667
Total Project Estimate				\$15,668

Notes: PE in YOE 2019 and ROW in YOE 2020 is not reflected in Financial Constraint Table. This project is in progress.

TIP #: 2020-001 **State ID:** 42819 **Project #:** NH-34-4(134) **Project Name** In Grand Island & South (SB)



Description: Resurfacing

HWY: US-34

Location: US-34 from 2.2 mi south of GI north to N Jct US-281 / W Jct N-2, RP - 226.74

Length (SLM): 5.4

Project Sponsor: NDOT

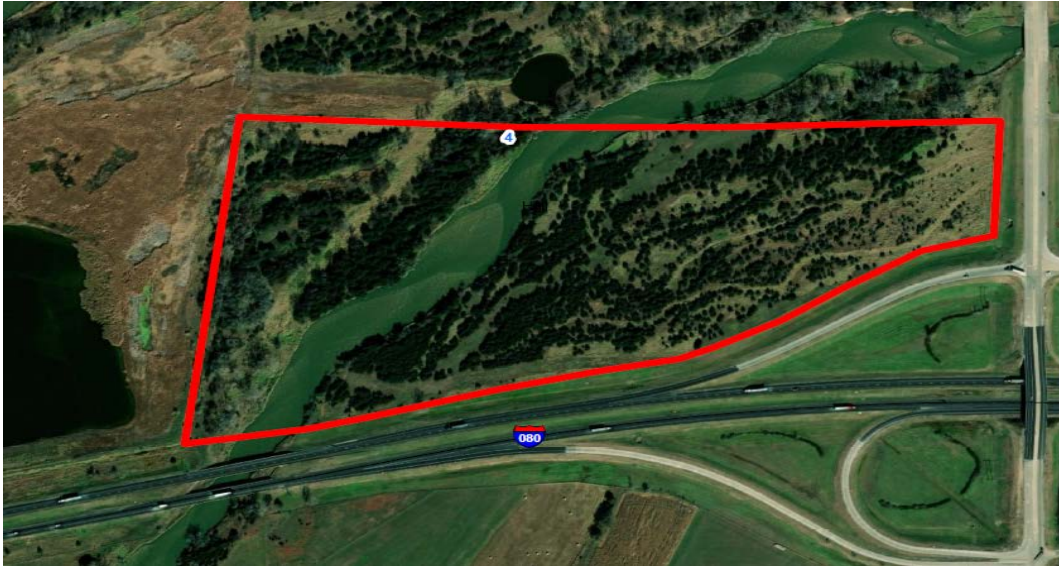
District #: 4

A/Q Status: Exempt

YOE	Phase	Fund Type	Fund Description	Estimate (\$1,000)
2021	PE	State	NDOT	\$418
2023	CONST/ CE	Federal	NHPP	\$5,446
2023	CONST/ CE	State	NDOT	\$1,410
Total Project Estimate				\$7,274

Notes: PE in YOE 2021 is not reflected in Financial Constraint Table. This project is in progress.

TIP #: 2020-002 **State ID:** 42891 **Project #:** MISC-40(65) **Project Name** District 4 Wetland Bank



Description: Survey, design, construct and monitor a wetland mitigation site

HWY:

Location: Adjacent to existing Mormon Island Mitigation Bank, RP - 0.00

Length (SLM): 0.0

Project Sponsor: NDOT

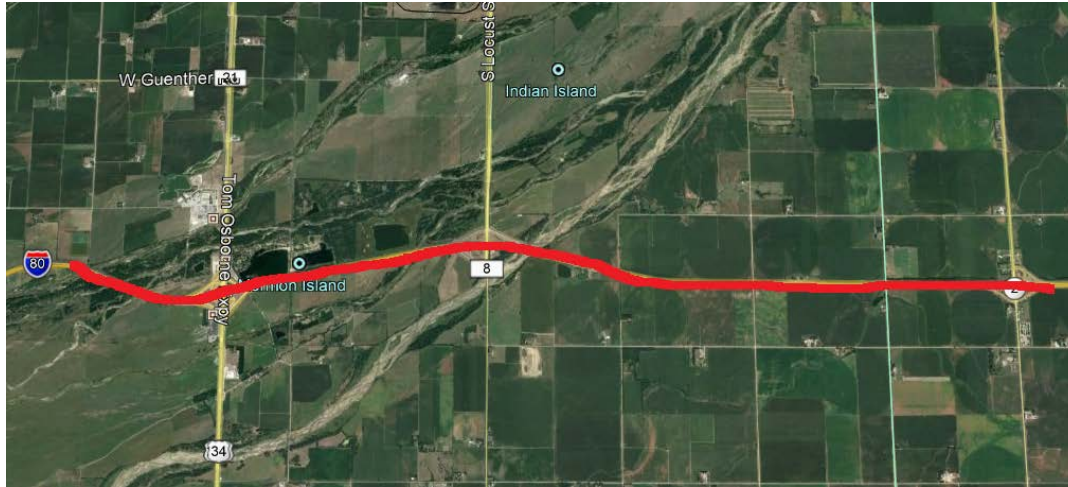
District #: 4

A/Q Status: Exempt

YOE	Phase	Fund Type	Fund Description	Estimate (\$1,000)
2021	PE	State	NDOT	\$230
2022	CONST/ CE	State	NDOT	\$898
Total Project Estimate				\$1,128

Notes: PE in YOE 2021 is not reflected in Financial Constraint Table. This project is in progress.

TIP #: 2022-001 **State ID:** 42920 **Project #:** NH-80-6(118) **Project Name** Platte River – Phillips



Description: Crack Seal on Interstate

HWY: I-80

Location: Hall and Hamilton County on I80
from MM 310.88 to 318.58

Length (SLM): 7.7

Project Sponsor: NDOT

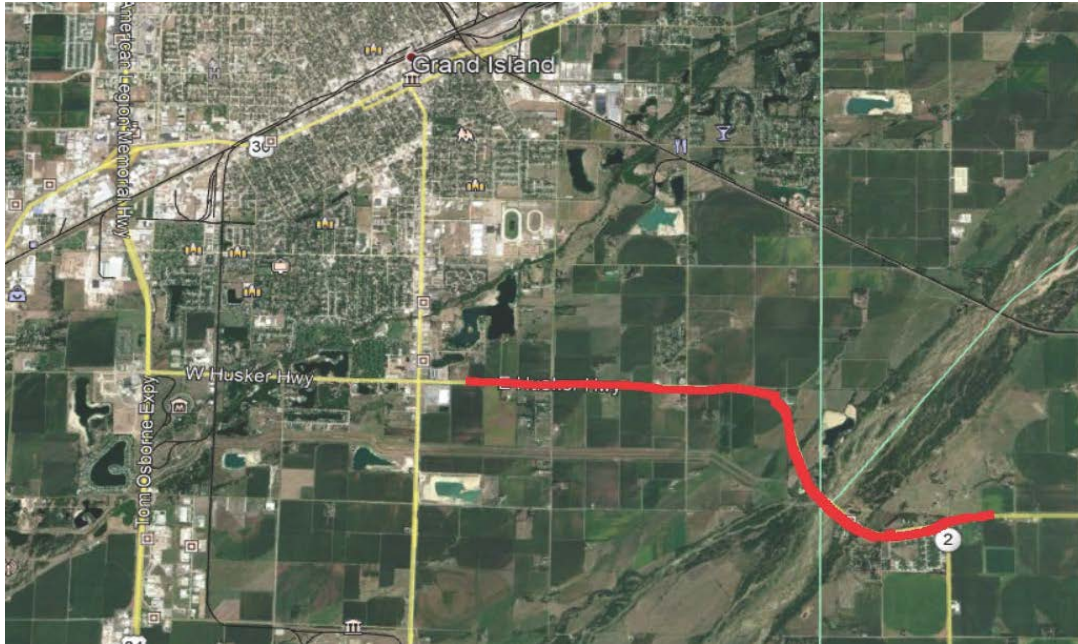
District #: 4

A/Q Status: Exempt

YOE	Phase	Fund Type	Fund Description	Estimate (\$1,000)
2022	PE	State	NDOT	\$1
2023	CONST/ CE	State	NDOT	\$18
2023	CONST/ CE	Federal	NHPP	\$161
Total Project Estimate				\$180

Notes:

TIP #: 2022-002 **State ID:** 42933 **Project #:** STP-34-4(135) **Project Name** Grand Island- Phillips



Description: Resurfacing and Grading

HWY: 034

Location: Hall County MM 233.32 to MM 237.88

Length (SLM): 4.56

Project Sponsor: NDOT

District #: 4

A/Q Status: Exempt

YOE	Phase	Fund Type	Fund Description	Estimate (\$1,000)
2022	PE	State	NDOT	\$1
2023	CONST/ CE	State	NDOT	\$533
2023	CONST/ CE	Federal	STP	\$2,134
Total Project Estimate				\$2,668

Notes:

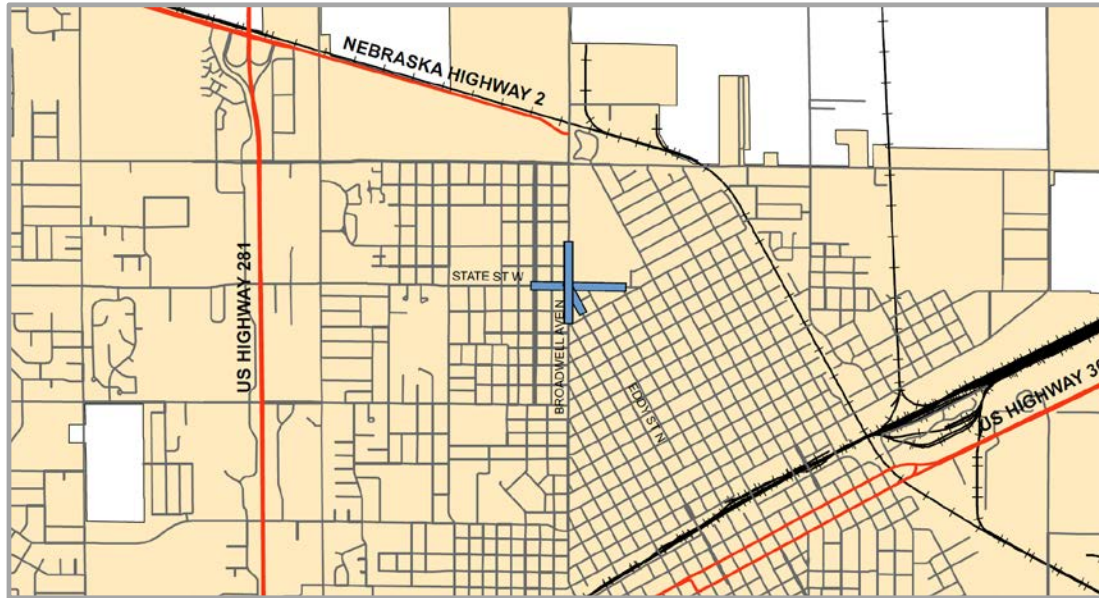
Status of Previous Years for State Agency Sponsored Projects

Project Sponsor	TIP ID	Project Name	Location	Description	YOE	Phase	Funding Description	Estimate (\$1,000)	Status
NDOT	2016-004	US-281 West, Grand Island	US-30 from 1.4 mi west of Grand Island to 0.4 mi west of US-281. Begin RP - 308.64	4 lane divided roadway on new alignment	2022	PE	Grand Island	\$193	Project scheduled for 8/24/23 letting FY 2024
					2022	PE	NDOT	\$2,158	
					2023	ROW	Grand Island	\$508	
					2023	ROW	NDOT	\$3,863	
					2024	CONST/CE	Grand Island	\$3,351	
NDOT	2016-008	In Grand Island Bridges	Three US-30 Bridges in Grand Island (Jct US-30/US-281/N-2 bridge and from Old Lincoln Hwy to Grant St), RP - 313.66	3-bridge repair/overlays, sealing, approach slabs, mill, resurface roadway	2024	CONST/CE	NDOT	\$29,043	Project has been delivered to contracts and is currently scheduled for a 8/26/21 letting
					2019	PE	NDOT	\$290	
					2020	ROW	NDOT	\$27	
					2022	CONST/CE	Grand Island	\$189	
					2022	CONST/CE	NHPP	\$4,108	
NDOT	2018-001	Cairo - Grand Island	N-2 from Cairo southeast to US-281 in Grand Island, RP - 343.73	Resurfacing	2022	CONST/CE	NDOT	\$1,003	Project is scheduled for a 8/26/21 letting
					2019	PE	NDOT	\$585	
					2020	ROW	NDOT	\$0	
					2022	CONST/CE	Grand Island	\$2,080	
					2022	CONST/CE	NHPP	\$11,336	
NDOT	2020-001	In Grand Island & South (SB)	US-34 from 2.2 mi south of Grand Island north to N Jct US-281 / W Jct N-2, RP -	Resurfacing	2022	CONST/CE	NDOT	\$1,667	Project currently scheduled for 8/25/22 letting
					2021	PE	NDOT	\$418	
					2023	CONST/CE	NHPP	\$5,446	
NDOT	2020-002	District 4 Wetland Bank	Adjacent to existing Mormon Island Mitigation Bank, RP - 0.00	Survey, design, construct and monitor a wetland mitigation site	2023	CONST/CE	NDOT	\$1,410	Project currently scheduled for 08/26/21 letting. FY
					2021	PE	NDOT	\$230	
					2022	CONST/CE	NDOT	\$898	
NDOT	2020-003	West Grand Island Interchange	I-80 at the Grand Island Interchange, RP - 311.50	Build new high mast lighting towers, install buried cable & control boxes					Project is complete.
					2019	PE	NDOT	\$27	
					2020	CONST/CE	NDOT	\$1,018	
NDOT	2021-008	Grand Island Area Bridges	(13)Bridges on I80 near the Grand Island Interchange	Add High Friction Surface Treatment to bridges and Horizontal curves on I80					Project will be complete on 9/30/2021.
					2020	PE	NDOT	\$10	
					2021	Const/CE	NDOT	\$159	
NDOT	2022-001	Platte River – Phillips	Hall and Hamilton County on I80 from MM 310.88 to 318.58	Crack Seal on Interstate	2021	Const/CE	HSIP	\$1,433	Project currently scheduled for 8/25/22 letting.
					2022	PE	NDOT	\$1	
					2023	Const/CE	NDOT	\$18	
NDOT	2022-002	Grand Island- Phillips	Hall County MM 233.32 to MM 237.88	Resurfacing and Grading	2023	Const/CE	NHPP	\$161	Project currently scheduled for 8/28/22 letting.
					2022	PE	NDOT	\$1	
					2023	Const/CE	NDOT	\$533	
					2023	Const/CE	STP	\$2,134	



B Local Roadway Projects

TIP #: 2018-003 **State ID:** 42863 **Project #:** HSIP-5409(3) **Project Name** 5-Points Intersection Improvements



Description: Intersection Improvements (Roundabout)

HWY: Broadwell Avenue

Location: Broadwell Avenue, State Street, and Eddy Street intersection

Length (SLM): 0.4

Project Sponsor: Grand Island

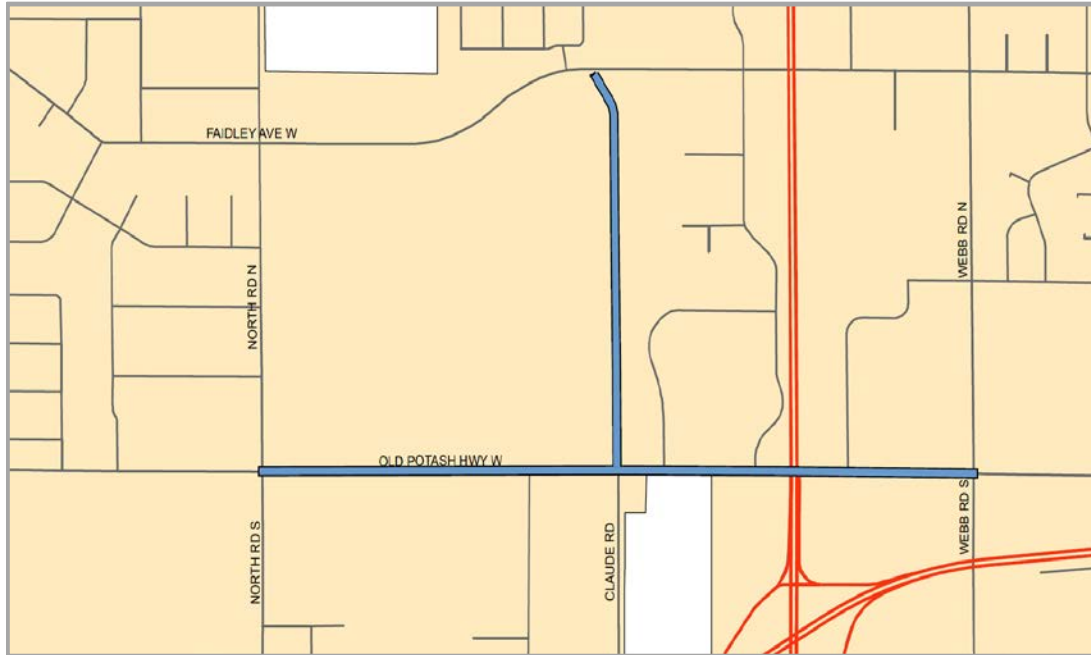
District #: 4

A/Q Status: Exempt

YOE	Phase	Fund Type	Fund Description	Estimate (\$1,000)
2019	PE	Local	Grand Island	\$80
2019	PE	Federal	HSIP	\$318
2021	ROW	Local	Grand Island	\$101
2021	ROW	Federal	HSIP	\$406
2021	CONST/ CE	Local	Grand Island	\$503
2021	CONST/ CE	Federal	HSIP	\$2,012
Total Project Estimate				\$3,420

Notes: YOE 2019 - 2021 is not reflected in Financial Constraint Table. This project is in progress.

TIP #: 2020-004 **State ID:** **Project #:** **Project Name** Old Potash Highway Improvements



Description: Widening and Intersection Improvements, including an extension of Claude Road

HWY: Old Potash Highway

Location: Old Potash Highway from North Road to Webb Road and Claude Road from Old Potash Highway to Faidley Ave

Length (SLM): 1.8

Project Sponsor: Grand Island

District #: 4

A/Q Status: Exempt

YOE	Phase	Fund Type	Fund Description	Estimate (\$1,000)
2019	PE	Local	Grand Island	\$1,713
2020	ROW	Local	Grand Island	\$2,080
2021	CONST/ CE	Local	Grand Island	\$9,162
2022	CONST/ CE	Local	Grand Island	\$4,975
Total Project Estimate				\$17,930

Notes: YOE 2019 - 2021 is not reflected in Financial Constraint Table. This project is in progress.

TIP #: 2021-004 **State ID:** **Project #:** **Project Name** Broadwell Ave./ UPRR - Planning & Environ.



Description: Broadwell Ave./ UPRR - Planning & Environmental Study

HWY: Broadwell Avenue

Location: Broadwell Ave. - Faidley Ave. to Anna St.

Length (SLM): 1.0

Project Sponsor: Grand Island

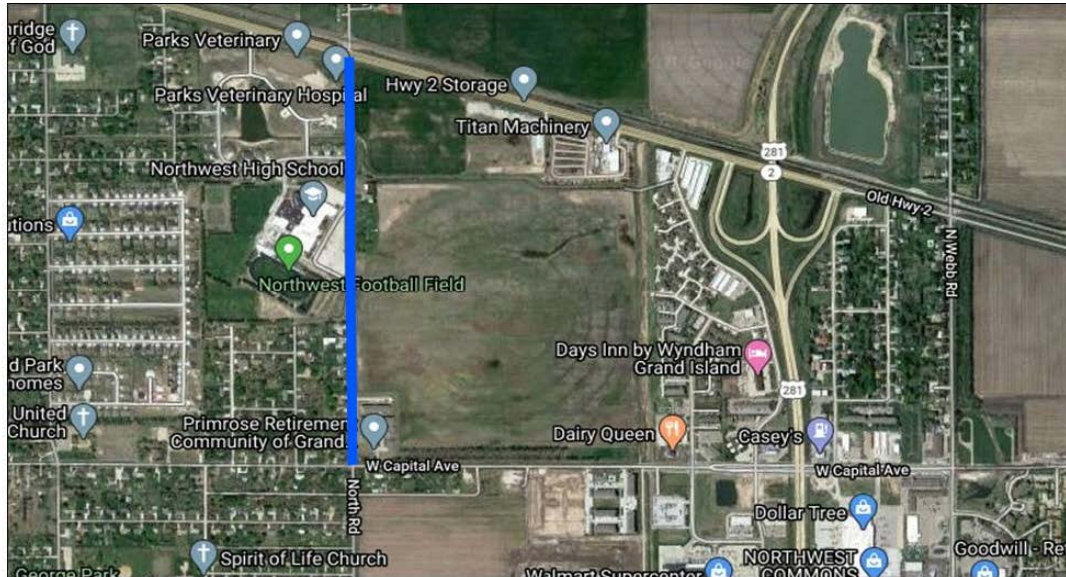
District #: 4

A/Q Status: Exempt

YOE	Phase	Fund Type	Fund Description	Estimate (\$1,000)
2019	Planning	Local	Grand Island	\$81
2020	Planning	Local	Grand Island	\$147
2021	Planning	Local	Grand Island	\$184
Total Project Estimate				\$412

Notes: YOE 2019 - 2021 is not reflected in Financial Constraint Table. This project is in progress.

TIP #: 2021-005 **State ID:** **Project #:** **Project Name** North Road Improv. - HWY 2 to Capital Ave



Description: Curb and gutter roadway section with associated sidewalk, traffic control, drainage improvements.

HWY: North Road

Location: North - Highway 2 to Capital Ave.

Length (SLM): .75

Project Sponsor: Grand Island

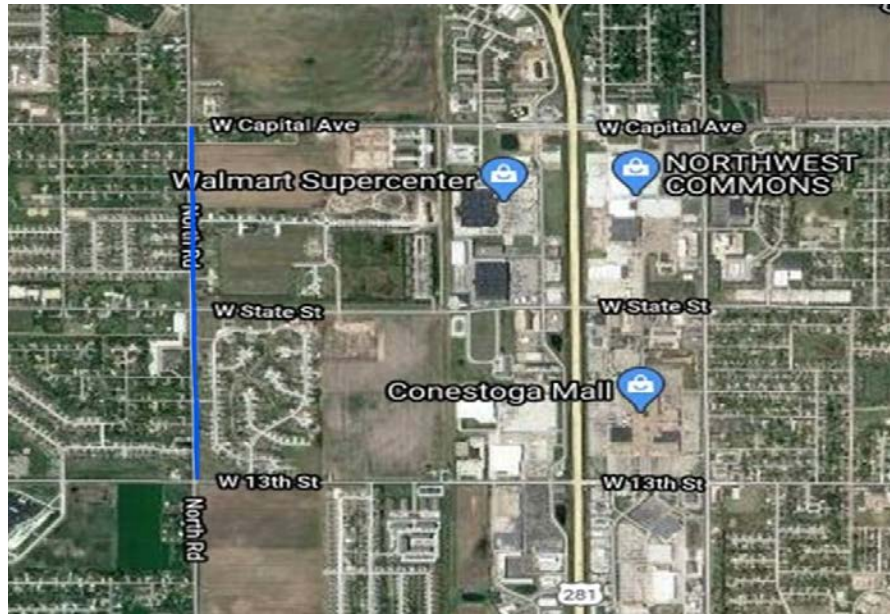
District #: 4

A/Q Status: Exempt

YOE	Phase	Fund Type	Fund Description	Estimate (\$1,000)
2019	PE	Local	Grand Island	\$265
2019	ROW	Local	Grand Island	\$42
2020	PE	Local	Grand Island	\$312
2020	CONST/ CE	Local	Grand Island	\$1,807
2021	CONST/ CE	Local	Grand Island	\$1,883
Total Project Estimate				\$4,309

Notes: YOE 2019 - 2021 is not reflected in Financial Constraint Table. This project is in progress.

TIP #: 2021-006 **State ID:** **Project #:** **Project Name** North Road Improv. - Capital Ave. to 13th St.



Description: Curb and gutter roadway section with associated sidewalk, traffic control, drainage improvements.

HWY: North Road

Location: North - Capital Ave. to 13th St.

Length (SLM): 1.0

Project Sponsor: Grand Island

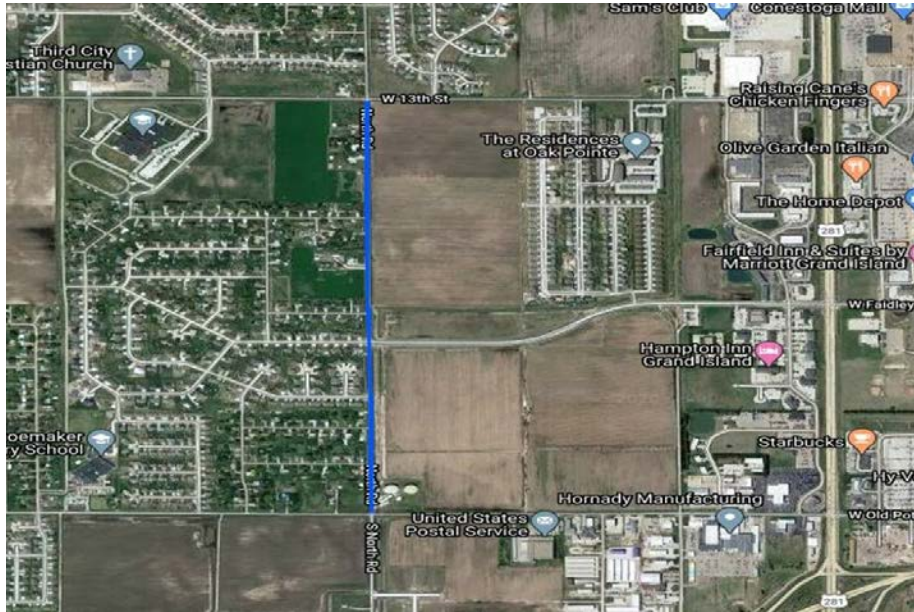
District #: 4

A/Q Status: Exempt

YOE	Phase	Fund Type	Fund Description	Estimate (\$1,000)
2019	PE	Local	Grand Island	\$100
2020	PE	Local	Grand Island	\$114
2020	ROW	Local	Grand Island	\$20
2021	PE	Local	Grand Island	\$139
2021	CONST/ CE	Local	Grand Island	\$2,169
2022	CONST/ CE	Local	Grand Island	\$1,512
Total Project Estimate				\$4,054

Notes: YOE 2019 - 2021 is not reflected in Financial Constraint Table. This project is in progress.

TIP #: 2021-007 **State ID:** **Project #:** **Project Name** North Road Improv. - 13th St. to Old Potash



Description: Curb and gutter roadway section with associated sidewalk, traffic control, drainage improvements.

HWY: North Road

Location: North - 13th St. to Old Potash HWY

Length (SLM): 1.0

Project Sponsor: Grand Island

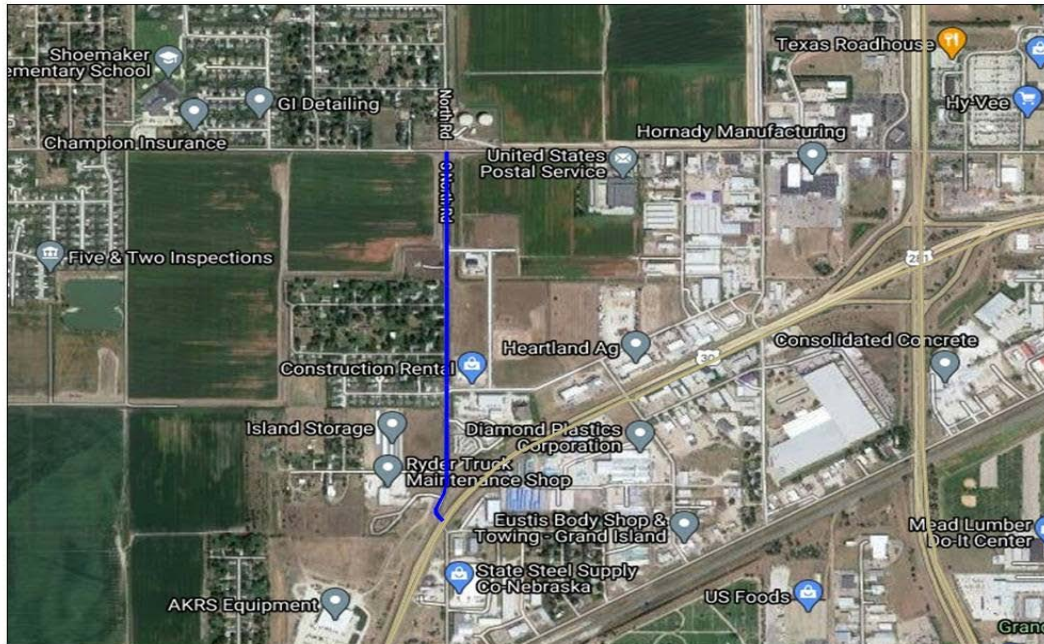
District #: 4

A/Q Status: Exempt

YOE	Phase	Fund Type	Fund Description	Estimate (\$1,000)
2019	PE	Local	Grand Island	\$90
2020	PE	Local	Grand Island	\$130
2021	PE	Local	Grand Island	\$10
2021	ROW	Local	Grand Island	\$20
2022	CONST/ CE	Local	Grand Island	\$3,000
2023	CONST/ CE	Local	Grand Island	\$1,800
Total Project Estimate				\$5,050

Notes: YOE 2019 - 2021 is not reflected in Financial Constraint Table. This project is in progress.

TIP #: 2022-003 **State ID:** **Project #:** **Project Name** North Road Improv. - Old Potash to HWY 30



Description: Curb and gutter roadway section with associated sidewalk, traffic control, drainage improvements.

HWY: North Road

Location: North - Old Potash HWY to HWY 30

Length (SLM): 1.0

Project Sponsor: Grand Island

District #: 4

A/Q Status: Exempt

YOE	Phase	Fund Type	Fund Description	Estimate (\$1,000)
2020	PE	Local	Grand Island	\$115
2021	PE	Local	Grand Island	\$80
2021	ROW	Local	Grand Island	\$7
2023	CONST/ CE	Local	Grand Island	\$2,500
2024	CONST/ CE	Local	Grand Island	\$2,700
Total Project Estimate				\$5,402

Notes: YOE 2020 and 2021 is not reflected in Financial Constraint Table. This project is in progress.

TIP #: 2022-004 **State ID:** **Project #:** **Project Name** Capital Ave Improvements



Description: Curb and gutter roadway section with associated sidewalk, traffic control, drainage improvements.

HWY: Capital Ave

Location: Capital Ave - North Road to Moores Creek

Length (SLM): .5

Project Sponsor: Grand Island

District #: 4

A/Q Status: Exempt

YOE	Phase	Fund Type	Fund Description	Estimate (\$1,000)
2020	PE	Local	Grand Island	\$30
2021	PE	Local	Grand Island	\$110
2021	CONST/ CE	Local	Grand Island	\$20
2022	PE	Local	Grand Island	\$85
2022	CONST/ CE	Local	Grand Island	\$1,000
2023	CONST/ CE	Local	Grand Island	\$1,000
Total Project Estimate				\$2,245

Notes: YOE 2020 and 2021 is not reflected in Financial Constraint Table. This project is in progress.

Status of Previous Years for Local Agency Sponsored Projects

Project Sponsor	TIP ID	Project Name	Location	Description	YOE	Phase	Funding Description	Federal (\$1,000)	Status
Grand Island	2018-003	5-Points Intersection Improvements	Broadwell Avenue, State Street, and Eddy Street intersection	Intersection Improvements	2019	PE	Grand Island	\$80	Letting was scheduled for September 30, 2021
					2019	PE	HSIP	\$318	
					2021	ROW	Grand Island	\$101	
					2021	ROW	HSIP	\$406	
					2021	CONST/CE	Grand Island	\$503	
Grand Island	2020-004	Old Potash Highway Improvements	Old Potash Highway from North Road to Webb Road and Claude Road from Old Potash Highway to	Widening and Intersection Improvements, including an extension of Claude Road	2021	CONST/CE	HSIP	\$2,012	Under construction
					2019	PE	Grand Island	\$1,713	
					2020	ROW	Grand Island	\$2,080	
					2021	CONST/CE	Grand Island	\$9,162	
					2022	CONST/CE	Grand Island	\$4,975	
Grand Island	2021-004	Broadwell Ave./ UPRR - Planning & Environment	Broadwell Ave. - Faidley Ave. to Anna St.	Broadwell Ave./ UPRR - Planning & Environmental Study	2019	Planning	Grand Island	\$81	
					2020	Planning	Grand Island	\$147	
					2021	Planning	Grand Island	\$184	
Grand Island	2021-005	North Road Improv. - Highway 2 to Capital Avenue	North - Highway 2 to Capital Avenue	Curb and gutter roadway section with associated sidewalk, traffic control, drainage improvements.	2019	PE	Grand Island	\$265	Roadway construction complete - seeding and sodding in Spring 2021.
					2019	ROW	Grand Island	\$42	
					2020	PE	Grand Island	\$312	
					2020	CONST/CE	Grand Island	\$1,807	
					2021	CONST/CE	Grand Island	\$1,883	
Grand Island	2021-006	North Road Improv. - Capital Ave. to 13th Street	North - Capital Ave. to 13th St.	Curb and gutter roadway section with associated sidewalk, traffic control, drainage improvements.	2019	PE	Grand Island	\$100	Under construction
					2020	PE	Grand Island	\$114	
					2020	ROW	Grand Island	\$20	
					2021	PE	Grand Island	\$139	
					2021	CONST/CE	Grand Island	\$2,169	
					2022	CONST/CE	Grand Island	\$1,512	
Grand Island	2021-007	North Road Improv. - 13th St. to Old Potash	North - 13th St. to Old Potash HWY	Curb and gutter roadway section with associated sidewalk, traffic control, drainage improvements.	2019	PE	Grand Island	\$90	Scheduled for FY 2022
					2020	PE	Grand Island	\$130	
					2021	PE	Grand Island	\$10	
					2021	ROW	Grand Island	\$20	
					2022	CONST/CE	Grand Island	\$3,000	
					2023	CONST/CE	Grand Island	\$1,800	
Grand Island	2022-003	North Road Improv. - Old Potash to HWY 30	North - Old Potash HWY to HWY 30	Curb and gutter roadway section with associated sidewalk, traffic control, drainage improvements.	2020	PE	Grand Island	\$115	Scheduled for FY 2023
					2021	PE	Grand Island	\$80	
					2021	ROW	Grand Island	\$7	
					2023	CONST/ CE	Grand Island	\$2,500	
					2024	CONST/ CE	Grand Island	\$2,700	
Grand Island	2022-004	Capital Ave Improvements	Capital Ave - North Road to Moores Creek	Curb and gutter roadway section with associated sidewalk, traffic control, drainage improvements.	2020	PE	Grand Island	\$30	Scheduled for FY 2022
					2021	PE	Grand Island	\$110	
					2021	CONST/ CE	Grand Island	\$20	
					2022	PE	Grand Island	\$85	
					2022	CONST/ CE	Grand Island	\$1,000	
					2023	CONST/ CE	Grand Island	\$1,000	

C Transit Projects

TIP #: 2022-001 **State ID:** N/A **Project Name:** Operations - Urban Transit Operating Assistance **Length (SLM):** N/A
Project #: **Project Sponsor:** Grand Island **District #** 4 **A/Q Status:** Exempt
HWY: N/A **Location:** Grand Island Urbanized Area

YOE	Phase	Fund Type	Fund Description	Estimate (\$1,000)
2022	OPR	Federal	5307	\$508
2022	OPR	Local	Grand island	\$354 *
2023	OPR	Federal	5307	\$620
2023	OPR	Local	Grand island	\$389 *
2024	OPR	Federal	5307	\$553
2024	OPR	Local	Grand island	\$379 *
2025	OPR	Federal	5307	\$569
2025	OPR	Federal	Grand island	\$391 *
Total Project Estimate				\$3,763

Description: Operating assistance for transit services in the Grand Island Urbanized Area. Includes costs associated with operating, bus support equipment/facilities (i.e., rideshare, vehicle equipment), and other capital items relating to bus activities (i.e., preventative maintenance, third-party contracting, federal administration (City Transit Program Manager), training expenses)

Notes: YOE 2022: FTA 5307 - \$508 (Operating - \$303, Bus Support Equipment/Facilities - \$26, Other Capital Items (Bus) - \$178) and Local - \$354 (Operating - \$303, Bus Support Equipment/Facilities - \$7, Other Capital Items (Bus) - \$44).

YOE 2023: FTA 5307 - \$620 (Operating - \$312, Bus Support Equipment/Facilities - \$37, Other Capital Items (Bus) - \$271) and Local - \$389 (Operating - \$312, Bus Support Equipment/Facilities - \$9, Other Capital Items (Bus) - \$68)

YOE 2024: FTA 5307 - \$553 (Operating - \$322, Bus Support Equipment/Facilities - \$28, Other Capital Items (Bus) - \$203) and Local - \$379 (Operating - \$322, Bus Support Equipment/Facilities - \$7, Other Capital Items (Bus) - \$51)

YOE 2025: FTA 5307 - \$569 (Operating - \$347, Bus Support Equipment/Facilities - \$29, Other Capital Items (Bus) - \$194) and Local - \$391 (Operating - \$335, Bus Support Equipment/Facilities - \$7, Other Capital Items (Bus) - \$48)

* This amount is subject to decrease because the City of Grand Island may receive state funds from the Nebraska Public Transportation Assistance Program.

TIP #: 2022-002 **State ID:** N/A **Project Name:** Operations - Rural Transit Operating Assistance **Length (SLM):** N/A
Project # 2018-005 **Project Sponsor:** Hall County **District #** 4 **A/Q Status:** Exempt
HWY: N/A **Location:** Areas outside of the Grand Island Urbanized Area in Hall County

YOE	Phase	Fund Type	Fund Description	Estimate (\$1,000)
2022	OPR	Federal	5311	\$32
2022	OPR	State	NDOT	\$14
2022	OPR	Local	Hall County	\$14
2023	OPR	Federal	5311	\$42
2023	OPR	State	NDOT	\$15
2023	OPR	Local	Hall County	\$15
2024	OPR	Federal	5311	\$36
2024	OPR	State	NDOT	\$15
2024	OPR	Local	Hall County	\$15
2025	OPR	Federal	5311	\$37
2025	OPR	State	NDOT	\$15
2025	OPR	Local	Hall County	\$15
Total Project Estimate				\$265

Description: Operating assistance for transit services in areas outside of the Grand Island Urbanized Area

Notes:

TIP # 2022-003 **State ID:** N/A **Project Name:** CARES Funding Projects **Length (SLM):** N/A
Project #: **Project Sponsor:** Grand Island **District # 4** **A/Q Status:** Exempt
HWY: N/A **Location:** Grand Island Urbanized Area

YOE	Phase	Fund Type	Fund Description	Estimate (\$1,000)
2022	PLANNING	Federal	5307	\$0
2022	PLANNING	Local	Grand Island	\$0
2022	DESIGN	Federal	5307 Cares	\$100
2022	DESIGN	Local	Grand Island	\$0
2022	CAP	Federal	5307 Cares	\$2,000
2022	CAP	Federal	5307	\$1,500
2022	CAP	Federal	5339	\$590
2022	CAP	Local	Grand Island	\$424
2023	CAP	Federal	5339	\$64
2023	CAP	Local	Grand Island	\$16
2024	CAP	Federal	5339	\$68
2024	CAP	Local	Grand Island	\$17
2025	CAP	Federal	5339	\$72
2025	CAP	Local	Grand Island	\$18
Total Project Estimate				\$4,869

Description: Planning and capital acquisition for projects making use of CARES funding.

Notes: Any projects that may potentially use CARES funding.

TIP #: 2022-004 **State ID:** N/A **Project Name:** Transit Development Plan **Length (SLM):** N/A
Project #: **Project Sponsor:** Grand Island **District #** 4 **A/Q Status:** Exempt
HWY: N/A **Location:** Grand Island Urbanized Area

YOE	Phase	Fund Type	Fund Description	Estimate (\$1,000)
2022	OPR	Federal	5307	\$120
2022	OPR	Local	Grand island	\$30
2022	OPR	Federal	5305	\$20
2022	OPR	Local	Grand island	\$5
Total Project Estimate				\$175

Description: The transit development plan serves as a basis for defining the mobility needs within the service area.

Notes:

Status of Previous Years for Local Agency Sponsored Projects

Project Sponsor	TIP ID	Project Name	Location	Description	YOE	Phase	Funding Description	Federal (\$1,000)	Status
Grand Island	2022-001	Operations - Urban Transit Operating Assistance	Grand Island Urbanized Area	Operating assistance for transit services in the Grand Island Urbanized Area	2022	OPR	5307	\$508	Estimate revised for YOE 2022. Estimate added for YOE 2023 - 2025.
					2022	OPR	Grand island	\$354	
					2023	OPR	5307	\$620	
					2023	OPR	Grand island	\$389	
					2024	OPR	5307	\$553	
					2024	OPR	Grand island	\$379	
					2025	OPR	5307	\$569	
Grand Island	2022-002	Operations - Rural Transit Operating Assistance	Areas outside of the Grand Island Urbanized Area in Hall County	Operating assistance for transit services in areas outside of the Grand Island Urbanized Area	2025	OPR	Grand island	\$391	
					2022	OPR	5311	\$32	Estimate revised for YOE 2022. Estimate added for YOE 2023 - 2025.
					2022	OPR	NDOT	\$14	
					2022	OPR	Hall County	\$14	
					2023	OPR	5311	\$42	
					2023	OPR	NDOT	\$15	
					2023	OPR	Hall County	\$15	
Grand Island	2022-003	Transit Facility	Grand Island Urbanized Area	Facility planning and acquisition of facility for transit operations and vehicle storage	2024	OPR	5311	\$36	
					2024	OPR	NDOT	\$15	
					2024	OPR	Hall County	\$15	
					2025	OPR	5311	\$37	
					2025	OPR	NDOT	\$15	
					2025	OPR	Hall County	\$15	
					2022	PLANNING	5307	\$0	Estimate added for YOE 2022.
					2022	PLANNING	Grand Island	\$0	
					2022	DESIGN	5307 Cares	\$100	
					2022	DESIGN	Grand Island	\$0	
					2022	CAP	5307 Cares	\$2,000	
					2022	CAP	5307	\$1,500	
					2022	CAP	5339	\$530	
					2022	CAP	Grand Island	\$409	
					2023	CAP	5339	\$64	
					2023	CAP	Grand Island	\$16	
					2024	CAP	5339	\$68	
					2024	CAP	Grand Island	\$17	
					2025	CAP	5339	\$72	
					2025	CAP	Grand Island	\$18	



MPO Self – Certification

MPO Self-Certification

The Nebraska Department of Transportation (NDOT) and the Grand Island Area Metropolitan Planning Organization (GIAMPO) hereby certify that the transportation planning process is addressing the major issues in the metropolitan planning area and is being conducted in accordance with all the applicable requirements of:

- 1) **23 U.S.C. 134, 49 U.S.C. 5303 and this subpart;**
GIAMPO collaborates with local, State and public transportation agencies to carry out a continuing, cooperative, and comprehensive (3-C) metropolitan planning process through its Long Range Transportation Plan (LRTP), Transportation Improvement Program (TIP), Unified Planning Work Program (UPWP), and other transportation planning activities.
- 2) **In nonattainment and maintenance areas, sections 174 and 176 (c) and (d) of the Clean Air Act, as amended (42 U.S.C. 7504, 7506 (c) and (d) and 40 CFR part 93; GIAMPO is designated as an attainment area.**
- 3) **Title VI of the Civil Rights Act of 1964, as amended (42 U.S.C. 2000d-1) and 49 CFR part 21;**
GIAMPO completed its MPO Title VI Implementation Plan. The GIAMPO Policy Board approved this plan on May 23, 2017.
- 4) **49 U.S.C. 5332, prohibiting discrimination on the basis of race, color, creed, national origin, sex, or age in employment or business opportunity;**
GIAMPO's Public Participation Plan together with the MPO Title VI Implementation Plan and the City of Grand Island's Title VI Nondiscrimination Agreement ensures that no person will be excluded from participation in the planning process. This applies to GIAMPO's LRTP, TIP, UPWP, and other transportation planning activities.
- 5) **Section 1101(b) of the FAST Act (Pub. L. 114-94) and 49 CFR part 26 regarding the involvement of disadvantaged business enterprises in USDOT funded planning projects;**
The City of Grand Transit Program maintains the Disadvantaged Business Program that was to the Federal Transit Administration (FTA) in 2017 that includes a Fostering Small Business Participation element and continues to meet the requirements of FTA
- 6) **23 CFR part 230, regarding the implementation of an equal employment opportunity program on Federal and Federal-aid highway construction contracts;**
GIAMPO does not receive Federal-aid highway construction funds and does not let construction contracts. With regard to transportation planning activities related to contracts utilizing FHWA and FTA PL funds, the selection of private consultants is coordinated by and adheres to NDOT and City of Grand Island Procurement guidelines.

- 7) **The provisions of the Americans with Disabilities Act of 1990 (42 U.S.C. 12101 et seq.) and 49 CFR parts 27, 37, and 38;**
GIAMPO completed its American with Disabilities Act (ADA) Self-Evaluation and Transition Plan. The GIAMPO Policy approved this plan on November 22, 2016.
- 8) **The Older Americans Act, as amended (42 U.S.C. 6101), prohibiting discrimination on the basis of age in programs or activities receiving Federal financial assistance;**
- 9) **Section 324 of title 23 U.S.C. regarding the prohibition of discrimination based on gender; and**
- 10) **Section 504 of the Rehabilitation Act of 1973 (29 U.S.C. 794) and 49 CFR part 27 regarding discrimination against individuals with disabilities.**
GIAMPO is a program of the City of Grand Island's Public Works Department. The City of Grand Island has an Equal Employment Opportunity Policy that prohibits discrimination in employment opportunities or practices on the basis of race, color, religion, sex, sexual orientation, mental or physical disability, marital status, national origin, or genetic information. This policy along with the GIAMPO Public Participation Plan, MPO Title VI Implementation Plan, and ADA Self-Evaluation and Transition Plan ensures every effort will be made to assure nondiscrimination in its transportation planning activities.

By:

Attest:

 Roger Steele, Mayor / Chairperson

 John Collins, Public Works Director

 Date

 Date

By:

 Ryan Huff, Intermodal Planning Divisions Manager, Nebraska Department of Transportation

 Date

Comments