



City of Grand Island

Tuesday, December 22, 2020

Council Session

Item E-5

Public Hearing on Acquisition of Drainage Easements in Crane Valley and Crane Valley Seventh Subdivisions- 3645 W 13th Street (Concord Investments, LLC; Parcel No. 400150174 & 400416182)

Council action will take place under Consent Agenda item G-16.

Staff Contact: John Collins, P.E. - Public Works Director

Council Agenda Memo

From: Keith Kurz PE, Assistant Public Works Director

Meeting: December 22, 2020

Subject: Public Hearing on Acquisition of Drainage Easements in Crane Valley and Crane Valley Seventh Subdivisions- 3645 W 13th Street (Concord Investments, LLC; Parcel No. 400150174 & 400416182)

Presenter(s): John Collins PE, Public Works Director

Background

Nebraska State Statutes stipulate that the acquisition of property requires a public hearing to be conducted with the acquisition approved by the City Council.

Public easements are needed to accommodate drainage for development within Crane Valley and Crane Valley Seventh Subdivisions. These subdivisions are located north of Faidley Avenue, west of Concord Avenue.

A sketch is attached to show the easement area.

Discussion

To allow for the accommodation of public drainage to serve Crane Valley and Crane Valley Seventh Subdivisions it is requested that easements be acquired by the City of Grand Island according to the attached sketches.

There will be no cost of such easements to the City.

Alternatives

It appears that the Council has the following alternatives concerning the issue at hand. The Council may:

1. Move to approve
2. Refer the issue to a Committee
3. Postpone the issue to future date
4. Take no action on the issue

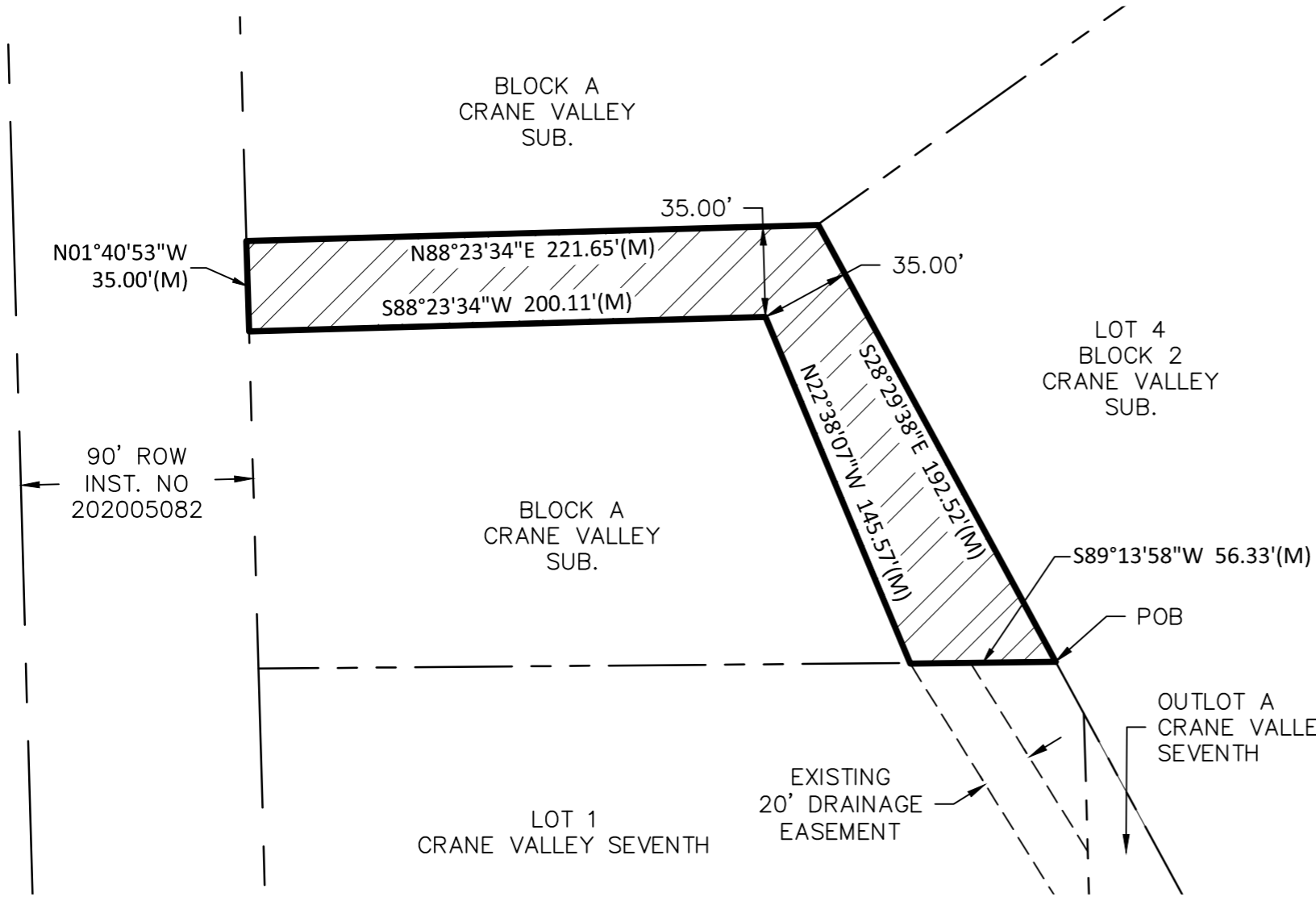
Recommendation

City Administration recommends that the Council approve the public easements.

Sample Motion

Move to approve the public easements.

DWG: F:\2019\3001-3500\019-3120\40-Design\Exhibits\EASEMENT EXHIBIT_V_XHIBIT_DRAINAGE EASEMENT 1.dwg
 USER: slorgsine
 DATE: Dec 14, 2020 10:59am
 XREFS:

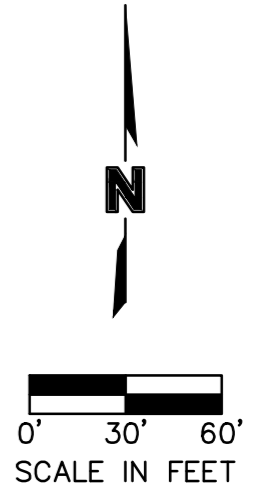
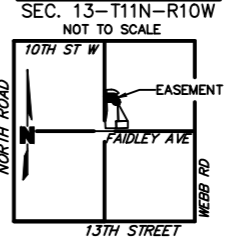


DRAINAGE EASEMENT DESCRIPTION:

A DRAINAGE EASEMENT LOCATED IN PART OF BLOCK A, CRANE VALLEY SUBDIVISION IN THE CITY OF GRAND ISLAND, HALL COUNTY NEBRASKA, AND MORE PARTICULARLY DESCRIBED AS FOLLOWS;

BEGINNING AT THE NORTHEAST CORNER OF LOT 1, CRANE VALLEY SEVENTH SUBDIVISION; THENCE S89°13'58"W, ALONG THE NORTH LINE OF SAID LOT 1, A DISTANCE OF 56.33 FEET; THENCE N22°38'07"W A DISTANCE OF 145.57 FEET; THENCE S88°23'34"W A DISTANCE OF 200.11 FEET TO A POINT ON THE WEST LINE OF BLOCK A, CRANE VALLEY SUBDIVISION; THENCE N01°40'53"W ALONG THE WEST LINE OF SAID BLOCK A, CRANE VALLEY SUBDIVISION, A DISTANCE OF 35.00 FEET; THENCE N88°23'34"E A DISTANCE OF 221.65 FEET TO A POINT ON THE EAST LINE OF BLOCK A, CRANE VALLEY SUBDIVISION; THENCE S28°29'38"E, ALONG THE EAST LINE OF SAID BLOCK A, A DISTANCE OF 192.52 FEET TO THE POINT OF BEGINNING SAID DRAINAGE EASEMENT CONTAINS A CALCULATED AREA OF 14,554.63 SQUARE FEET OR 0.334 ACRES MORE OR LESS.

LOCATION MAP



LEGEND

- SECTION LINE
- ROW LINE
- EXISTING EASEMENT LINE
- PROPERTY LINE
- DRAINAGE EASEMENT AREA

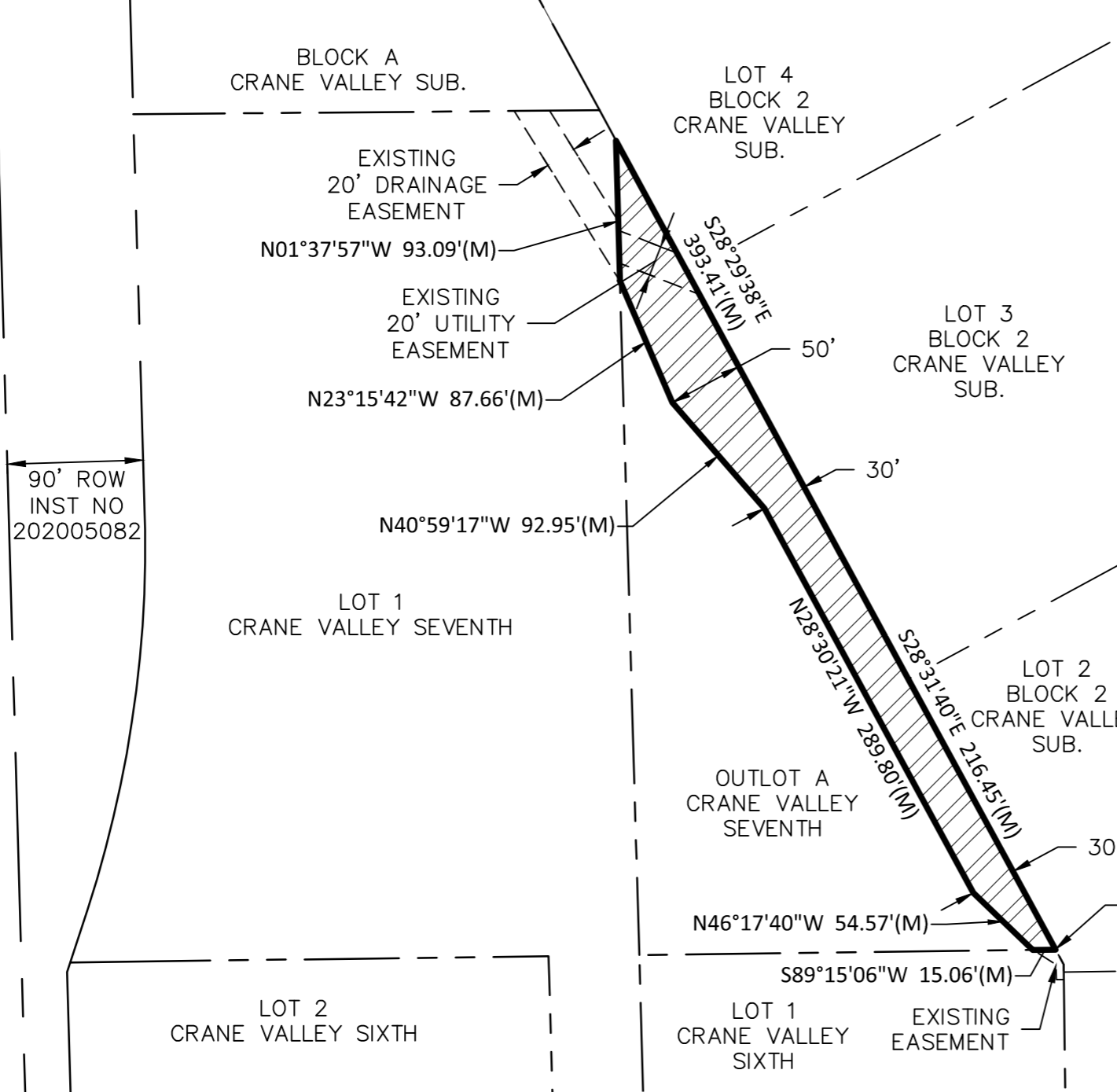
PROJECT NO:	019-3120
DRAWN BY:	SDL
DATE:	12-6-2020

DRAINAGE EASEMENT
 Council Session - 12/22/2020

201 East 2nd Street
 Grand Island, NE 68801
 TEL 308.384.8750

EXHIBIT
1 Page 4 / 5

DWG: F:\2019\3001-3500\019-3120\40-Design\Exhibits\EASEMENT EXHIBIT\V_XHIBIT_DRAINAGE EASEMENT 1.dwg
 USER: slongsine
 DATE: Dec 14, 2020 10:59am
 XREFS:



DRAINAGE EASEMENT DESCRIPTION:

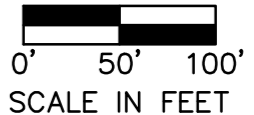
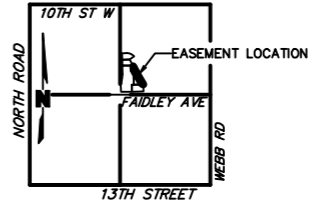
A DRAINAGE EASEMENT LOCATED IN PART OF OUTLOT A, CRANE VALLEY SEVENTH SUBDIVISION IN THE CITY OF GRAND ISLAND, HALL COUNTY NEBRASKA, AND MORE PARTICULARLY DESCRIBED AS FOLLOWS;

BEGINNING AT THE SOUTHEAST CORNER OF OUTLOT A, CRANE VALLEY SEVENTH SUBDIVISION; THENCE S89°15'06\"/>

90' ROW
INST NO
202005082

LOCATION MAP

SEC. 13-T11N-R10W
NOT TO SCALE



LEGEND

- SECTION LINE
- ROW LINE
- EXISTING EASEMENT LINE
- PROPERTY LINE
- DRAINAGE EASEMENT AREA

PROJECT NO:	019-3120
DRAWN BY:	SDL
DATE:	12-6-2020

DRAINAGE EASEMENT I
Council Session - 12/22/2020



201 East 2nd Street
Grand Island, NE 68801
TEL 308.384.8750

EXHIBIT	2
Page	5 / 5