



City of Grand Island

Tuesday, December 22, 2020

Council Session

Item E-1

Public Hearing on the Annual Report by Grand Island Area Economic Development Corp./Citizens Advisory Review Committee on the EDC Program Plan

Council action will take place under Resolutions item I-1.

Staff Contact: Jerry Janulewicz

Council Agenda Memo

From: Jerry Janulewicz, City Administrator

Meeting: December 22, 2020

Subject: Public Hearing Concerning the Annual Report by the Citizen Advisory Review Committee on the Economic Development Program Plan

Presenter(s): Dave Taylor, EDC President

Background

The voters of the City of Grand Island approved an economic development plan at the November 6, 2012 election. Subsequent to the election, the city has adopted an ordinance that establishes the economic development plan and a Citizen Advisory Review Committee to oversee the process of approving applications for economic development incentives. The Citizen Advisory Review Committee is required by State Statute and the Grand Island City Code to make an annual report to the City Council.

Discussion

The Citizen Advisory Review Committee has been conducting regular meetings during the last six months as required by the City Code and the Nebraska Statutes. The committee looks forward to receiving and reviewing meritorious applications for consideration in the future. The committee received the annual report from the Economic Development Corporation at its meeting of December 3, 2020 and voted to forward it on to the City Council for its review and acceptance.

Alternatives

It appears that the Council has the following alternatives concerning the issue at hand. The Council may:

1. Accept the annual report of the Citizen Advisory Review Committee.
2. Do not accept the annual report of the Citizen Advisory Review Committee.

Recommendation

City Administration recommends that the Council accept the annual report of the Citizen Advisory Review Committee.

Sample Motion

Move to accept the annual report of the Grand Island Area Economic Development Corporation/Citizen Advisory Review Committee.

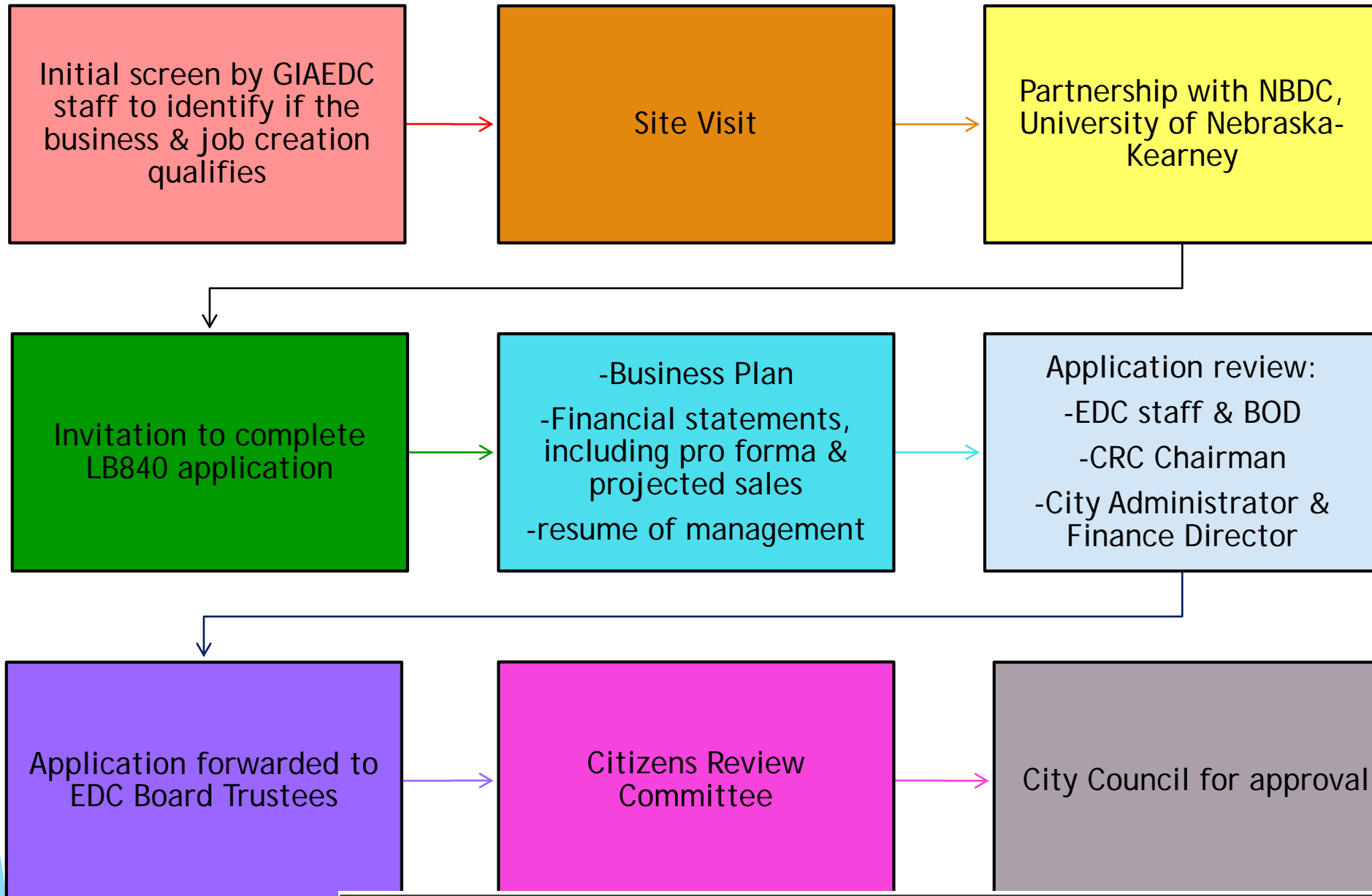


Annual Review

Board of Trustees



LB840 Process





Eligible Business Activities:

1. The manufacturer of articles of commerce
2. The conduct of research and development
3. The processing, storage, transport, or sale of goods or commodities which are sold or traded in interstate commerce
4. The sale of services in interstate commerce
5. Headquarter facilities relating to eligible activities as listed in this section
6. Telecommunication activities
7. End destination tourism-related activities



LB840 Projects

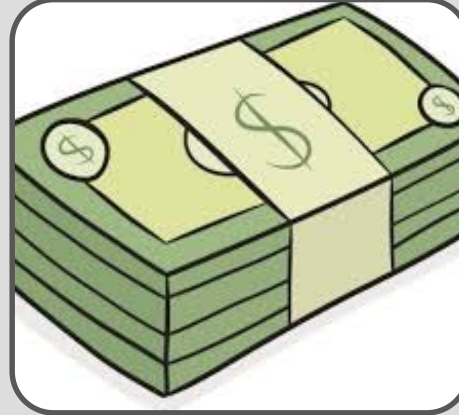
Active:

- ▶ Hendrix Genetics
 - ▶ 43 new jobs
- ▶ GIX Logistics
 - ▶ 12 new jobs
- ▶ Zabuni Specialty Coffee Auction
 - ▶ 10 new jobs
- ▶ Amur Equipment Finance
 - ▶ 15 new jobs
- ▶ Dramco Tool Company
 - ▶ 7 new jobs





LB840 Balance as of 11/20/2020	\$1,302,313
Hendrix Genetics	(\$0)
Amur Equipment Finance	(\$56,000)
Zabuni Specialty Coffee	(\$51,666)
GIX Logistics	(\$193,334)
Dramco Tool	(\$95,714)
City Admin Fee	(\$67,500)
Ending LB840 Balance	\$838,099



LB840 Funds
Invested:

\$5,994,100

Jobs Created:

1065

Annual Wages
Created:

\$33,565,896

2015-2019
Average Wage:

\$18.81



2020 Project Pipeline

Business Recruitment Projects:

- ▶ 7-Sigma
- ▶ AMC
- ▶ BEAR
- ▶ Beethoven
- ▶ 2-model
- ▶ Ebby
- ▶ Expo
- ▶ Double E
- ▶ GunDawg
- ▶ Spider
- ▶ Owl
- ▶ Peony
- ▶ Encore
- ▶ Coral
- ▶ SlipKnot



Platte Valley- East



Platte Valley Industrial Park- West



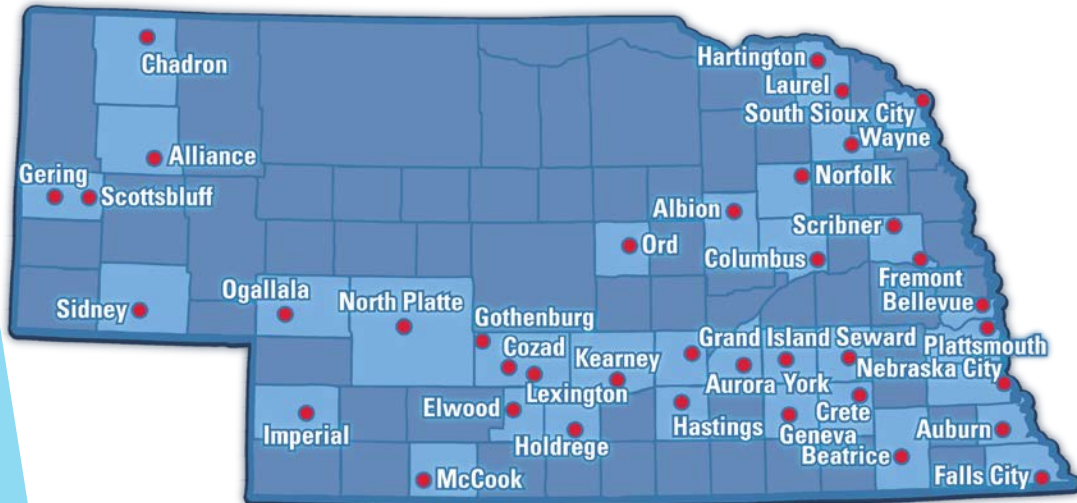
Drainage Improvement District





Nebraska Economic Development Certified Community

- ▶ Grand Island recertification approved



● Economic Development Certified Community





Covid-19 Impacts

Business:

- ▶ Supply Chain
- ▶ Demand for products & services has changed
- ▶ Businesses & Employees are continually adjusting & adapting
 - ▶ Work & Life balances have never been more important
- ▶ PPP loans are lifelines to some businesses

Community:

- ▶ Consumer trends have shifted
 - ▶ Major support to buy local
 - ▶ Online shopping still a threat
- ▶ CARES funding has positively impacted businesses
- ▶ Diversified grant funding

One Application, Two Opportunities

The City of Grand Island, Grand Island Area Economic Development, and Central Nebraska Growth Foundation are here to support Grand Island.

RLF <i>Revolving Loan Fund</i>		
LOCATION	Grand Island City Limits	
SPECIFICATIONS	No Specifications; must benefit Low-to-Moderate income employee	
FUNDING	City RLF	Growth Foundation/EDC RLF
	Applicant is eligible for \$3,000 FTE (max of 5)	Applicant is eligible for \$1500 FTE (max of 5)
FORGIVENESS	50% forgiveness after 12 months; 0% interest	
USAGE RESTRICTIONS	Must be used for employee retention, operational expenses, etc.	

BUSINESSES APPLIED & GRANTED

- ▶ Special Events
- ▶ Restaurant/Entertaining
- ▶ Retail
- ▶ Cosmetology
- ▶ Dental Offices



Housing in Grand Island

Housing:

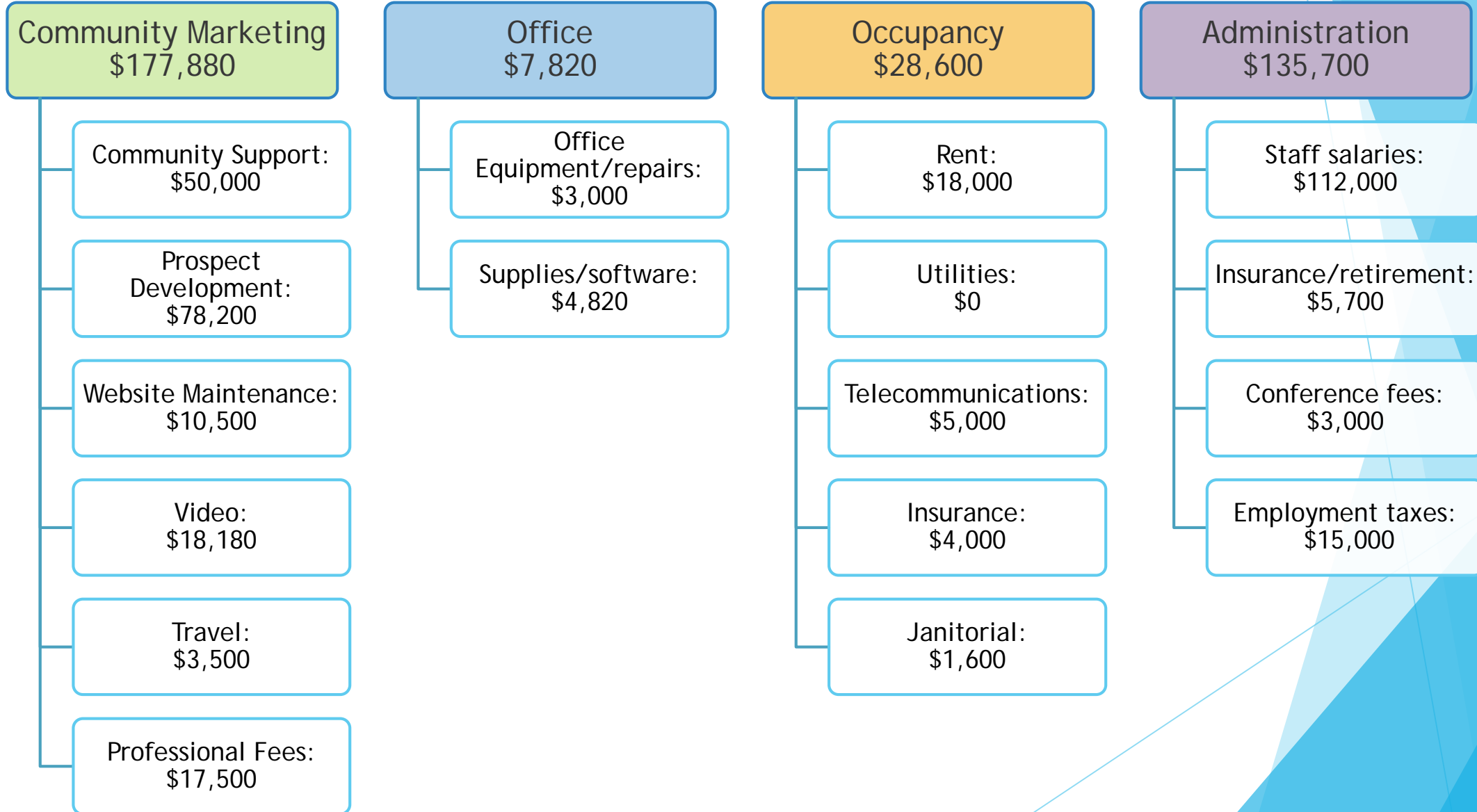
- ▶ LB1021
- ▶ LB866
- ▶ LB424
 - ▶ Thank you, Senator Dan Quick
 - ▶ Partnership between EDC & CRA

Rural Workforce Housing Fund

- ▶ GIAEDC will apply on behalf of the City of Grand Island
- ▶ Revolving Loan Fund, specifically to increase and improve housing stock
- ▶ 1:1 Cash Match



EDC Operating Budget



Thank You

For your dedication to Grand Island.